


FOR LEASE

Kokomo Medical Office Park
2302-2350 S. Dixon Road, Kokomo, IN 46902



PROPERTY DETAILS

- For Lease:
 - Suite 2312-300: 3,095 SF
 - Suite 2312-225: 3,619 SF
 - Suite 2302-415: 2,161 SF
- Easy commute from Community Howard Regional Hospital and Ascension St. Vincent Hospital
- Well-maintained and professionally managed medical office park
- Convenient, to-your-door parking
- Separate suite entrance for employees and providers
- Competitive tenant improvement allowance available

 **Kokomo Medical Office Park**
2302-2350 S. Dixon Road
Kokomo, IN 46902



CONTACT

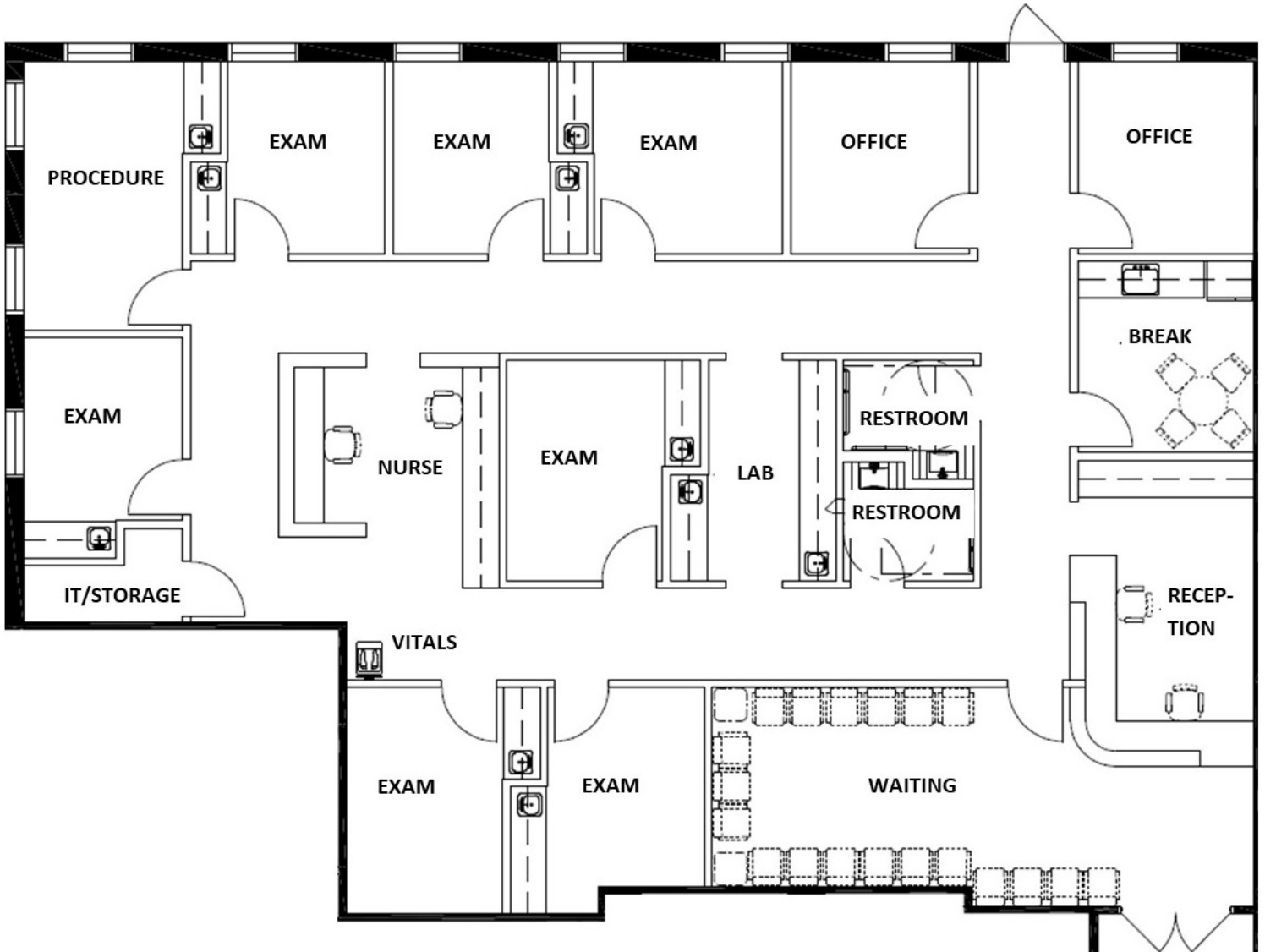
Charles Yeo, CCIM, CPM
SVP, Brokerage
317.288.9006
cyeo@cciin.com

Jenny McAllister
Associate, Brokerage
317.288.9022
jmcallister@cciin.com

Cornerstone Companies, Inc.
8902 N Meridian Street, Suite 205
Indianapolis, IN, 46260

CONCEPTUAL PLAN

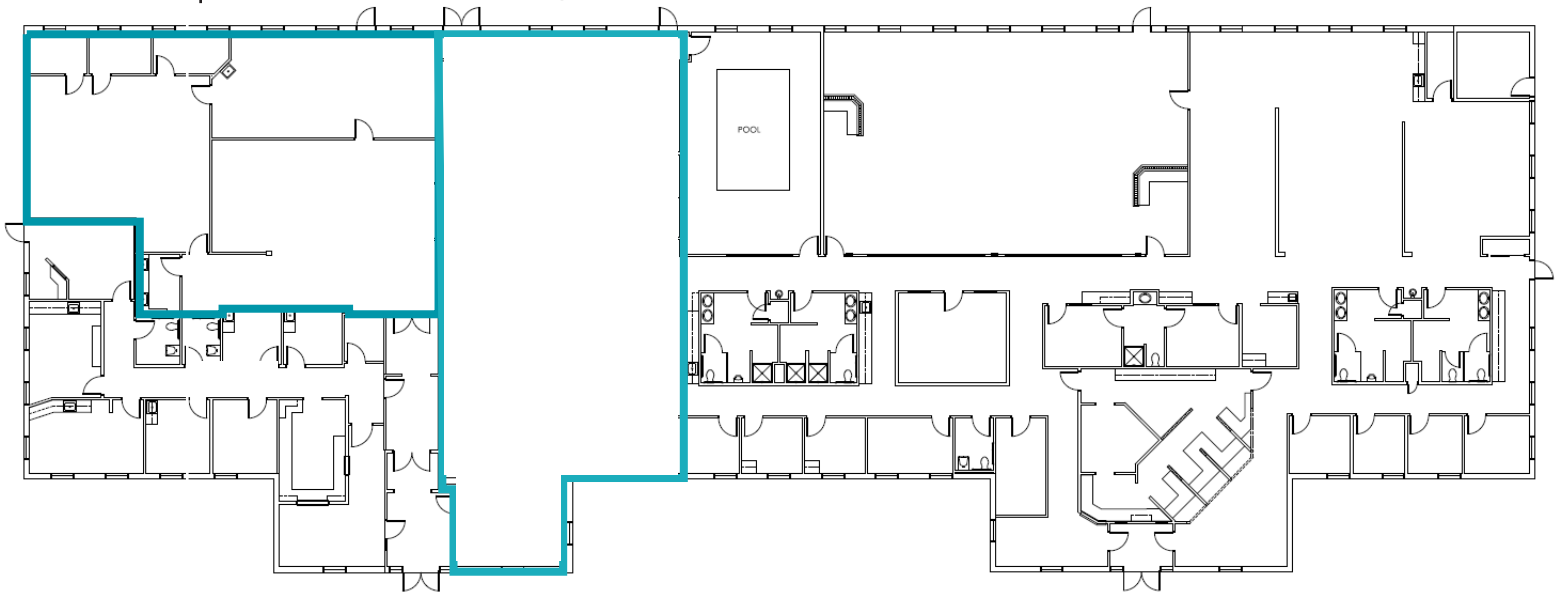
Suite 300
3,095 SF



FLOOR PLAN

Suite 2312-300
3,095 SF

Suite 2312-100
3,619 SF

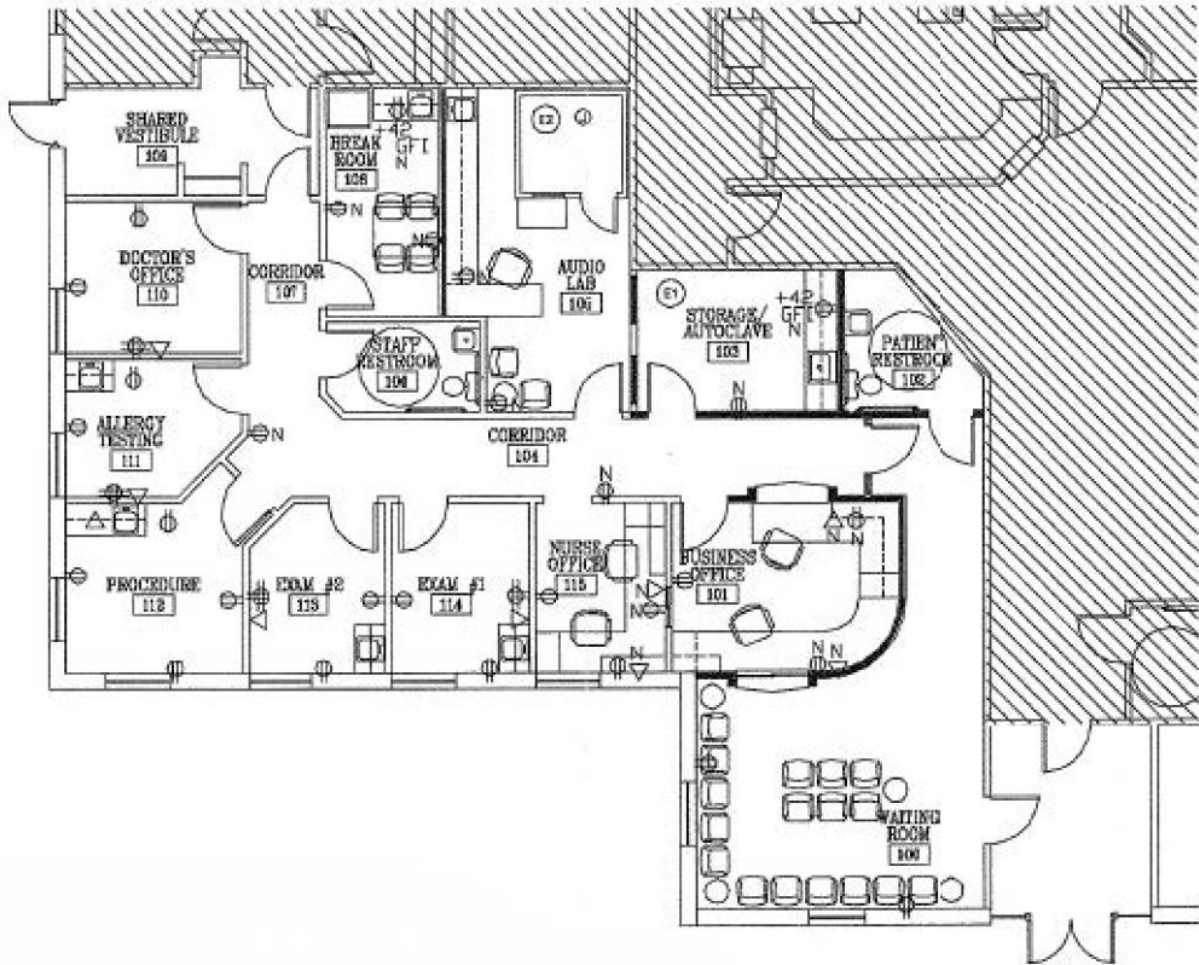


Max. Contiguous:
6,714 SF

FLOOR PLAN

Suite 2302-415

2,161 SF



KEY PLAN:





TRAFFIC COUNT

14,147 vehicles per day on South Dixon Road

DEMOGRAPHICS (5 - mile radius)



72,288
Population



40.4
Median Age



30,564
Households



\$70,839
Average Household Income

KOKOMO MEDICAL
OFFICE PARK



CONTACT

Charles Yeo, CCIM, CPM
SVP, Brokerage
317.288.9006
cyeo@cciin.com

Jenny McAllister
Associate, Brokerage
317.288.9022
jmcallister@cciin.com



© 2024 Cornerstone Companies, Inc. All rights reserved. Although the information contained herein has been obtained from sources deemed reliable, Owner, Cornerstone Companies, Inc., and/or their representatives, brokers or agents make no representation or warranty as to its accuracy or completeness. Any reliance on this information is solely at your own risk.