

PEAK PACIFIC SHOP & YARD

931 VALENTINE AVE SE | PACIFIC WA 98047

FOR SUBLEASE

TRUCK SHOP AND YARD SPACE
THAT CAN BE LEASED TOGETHER
OR SEPARATELY

TRUCK SHOP/CONTRACTOR YARD FOR SUBLEASE



SUBLEASE INFORMATION

Land Size:	Approx 75,000 SF of yard
Shop/Bldg:	5,700 SF of shop space available
Sublease Rate:	Yard: \$0.20/SF/mo Bldg: \$1.00/SF/mo
Available:	Now

PROPERTY HIGHLIGHTS

- ~75,000 sf of yard space that can be leased with shop or as parking only
- 5,700 SF shop with drive-through access
- 5 grade level doors (14')
- 4 minutes to Hwy 167
- Sublease term runs through October 2027



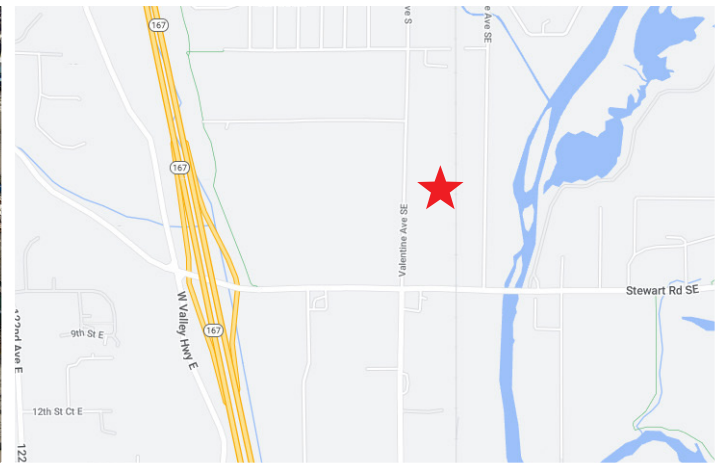
FLETCHER FARRAR
206.787.1469
ffarrar@neilwalter.com

MICHAEL ROY
206.940.7199
michael.roy@kbcadvisors.com



PEAK PACIFIC SHOP & YARD

931 VALENTINE AVE SE | PACIFIC WA 98047



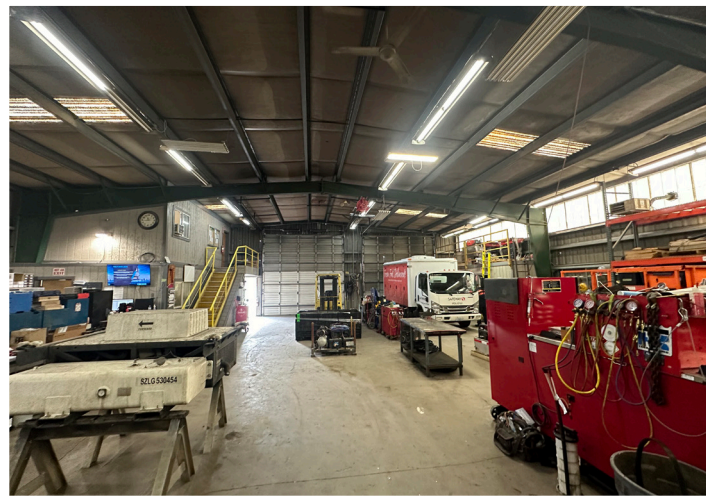
FLETCHER FARRAR
Neil Walter Co.
206.787.1469
ffarrar@neilwalter.com

MICHAEL ROY
KBC Advisors
206.940.7199
michael.roy@kbcadvisors.com

All information references in this document are approximate. The information contained herein is contained from sources deemed reliable. It is provided without representation, warranty, or guarantee, expressed or implied as to accuracy. Prospective buyer or tenant should conduct its own independent investigation relating to the property, government codes and regulations, allowed uses, and all other matters, regardless of whether they are referred to or contained in this document.

PEAK PACIFIC SHOP & YARD

931 VALENTINE AVE SE | PACIFIC WA 98047



FLETCHER FARRAR

Neil Walter Co.
206.787.1469
ffarrar@neilwalter.com

MICHAEL ROY

KBC Advisors
206.940.7199
michael.roy@kbcadvisors.com

All information references in this document are approximate. The information contained herein is contained from sources deemed reliable. It is provided without representation, warranty, or guarantee, expressed or implied as to accuracy. Prospective buyer or tenant should conduct its own independent investigation relating to the property, government codes and regulations, allowed uses, and all other matters, regardless of whether they are referred to or contained in this document.