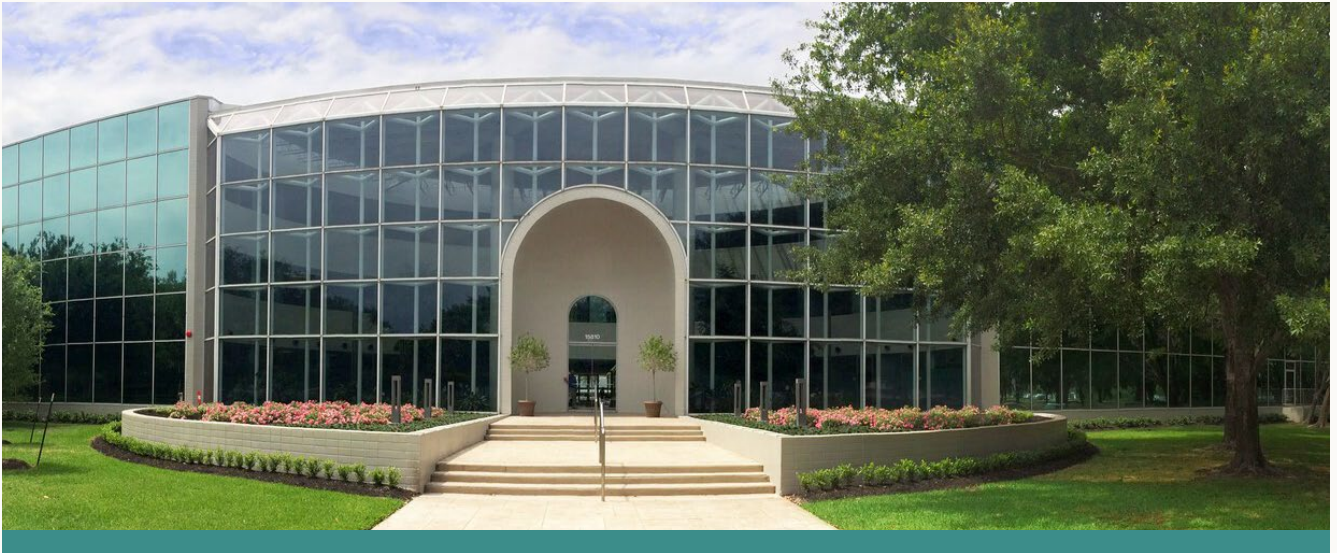


# 15810 PARK TEN PLACE

HOUSTON, TEXAS 77084



## OFFICE SPACE AVAILABLE



LEVEL

**2**

SUITE

**275**

AVAILABLE AREA

**5,321 SF**

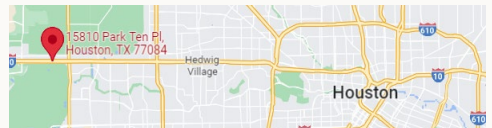
### A DISTINCTIVE ADDRESS IN THE ENERGY CORRIDOR

Suite 275 is available at Broadfield at Park Ten. The property is strategically in the Energy Corridor between Sam Houston Parkway and the Grand Parkway, with convenient access to I-10, Highway 6, hotels, restaurants and everyday amenities.



#### LOCATION ACCESS

Convenient access to I-10, Highway 6, hotels and restaurants



#### LEASING CONTACTS

##### **RYAN T. CROPPER**

Director of Real Estate Services

**713.800.0304**

[rcropper@missioncompanies.com](mailto:rcropper@missioncompanies.com)

##### **RYAN CLARK**

Director of Acquisitions and Development

**713.800.0297**

[rclark@missioncompanies.com](mailto:rclark@missioncompanies.com)

**MISSION COMPANIES |**  
**713.782.8550**

14825 St. Mary's Ln, Suite 125  
Houston, Texas 77079

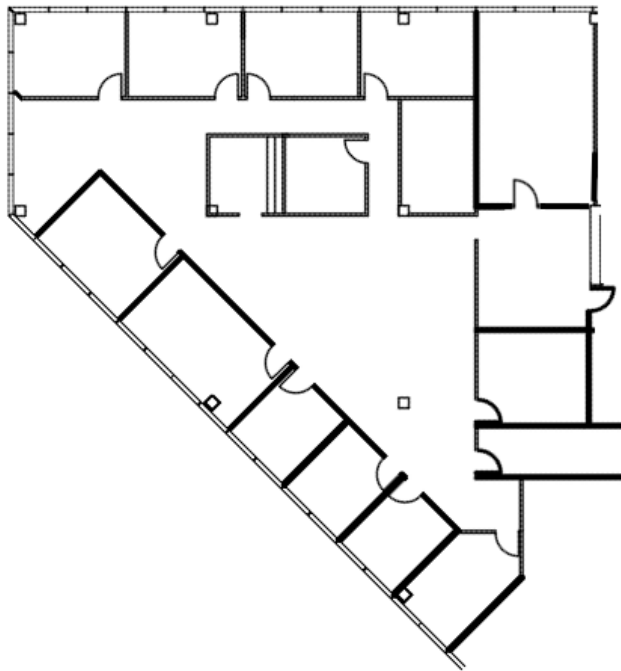
# OFFICE SPACE AVAILABLE

LEVEL 2 / 5,321 SF

Suite 275

FLOOR PLAN

## Suite 275 / Level 2



AVAILABLE AREA

5,321 SF

### LEASING CONTACTS

#### RYAN T. CROPPER

Director of Real Estate Services

713.800.0304

rcropper@missioncompanies.com

#### RYAN CLARK

Director of Acquisitions and Development

713.800.0297

rclark@missioncompanies.com

MISSION COMPANIES |  
713.782.8550

14825 St. Mary's Ln, Suite 125  
Houston, Texas 77079