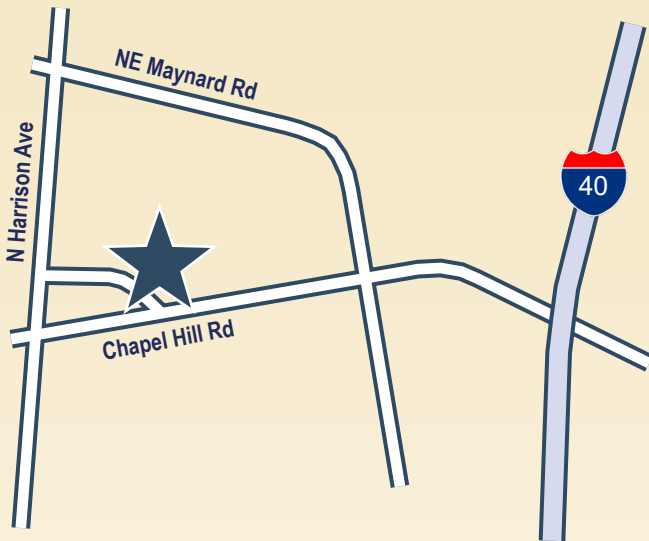


Adams Industrial Park

231-233 E Johnson Street • Cary, NC 27513



Flex Space Available For Lease near Downtown Cary



FEATURES

- Rare industrial space in Cary
- Easy access to I-40 and RTP
- Private offices, reception and warehouse
- Zoned: IP
- Covered shared loading dock
- Large parking lot

AVAILABLE	SIZE	LEASE RATE	TICAM	TOTAL MO. RENT
231-J	2,065 SF	\$18.00/SF	\$3.50/SF	\$3,700/Mo.
233-Q	1,815 SF	\$18.00/SF	\$3.50/SF	\$3,252/Mo.

COMMERCIAL ASSOCIATES
♦ REAL ESTATE ♦

919.878.6504

Michael Kornegay

Ext. 213 • michael@callca.com

Clark Womack

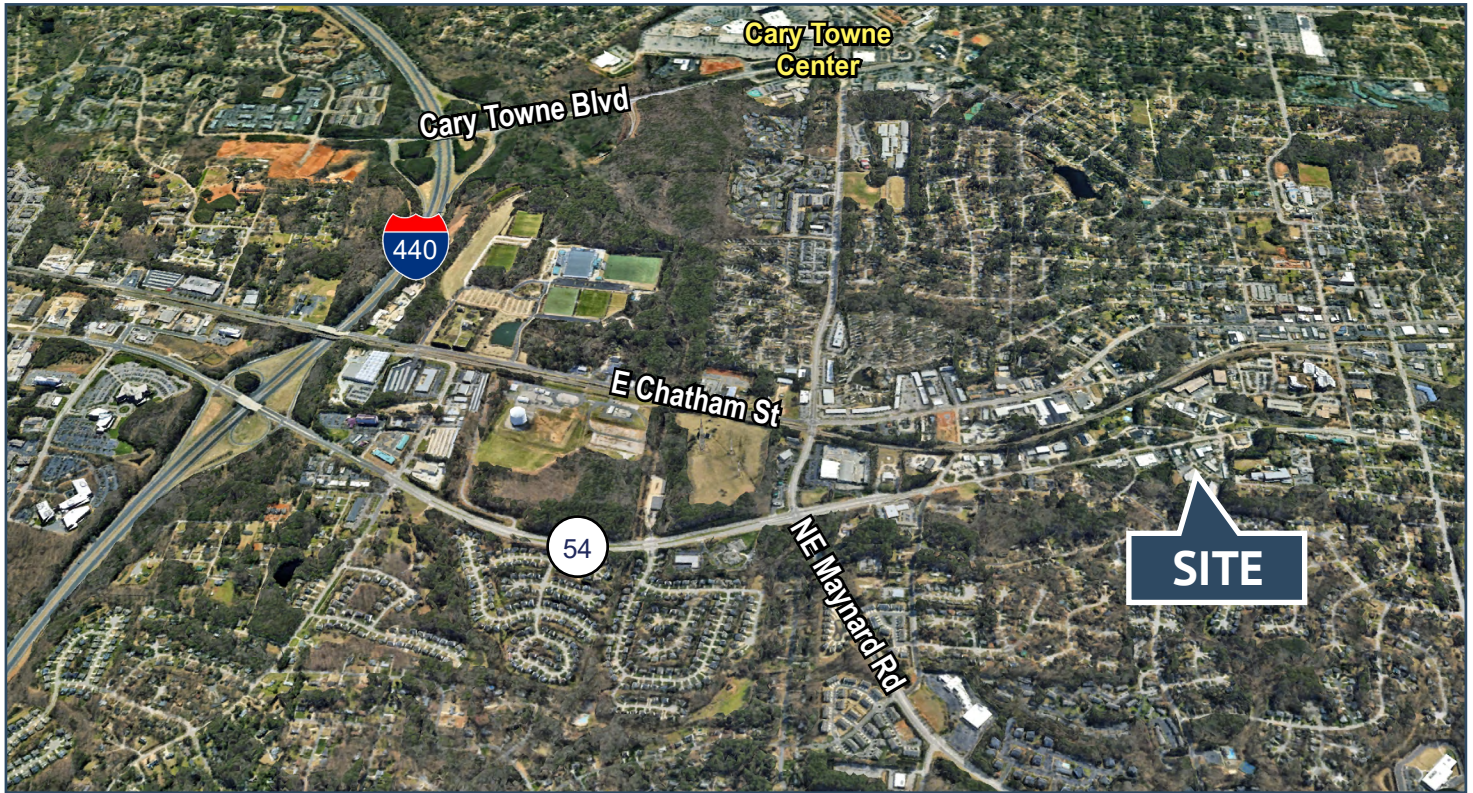
Ext. 214 • clark@callca.com

Adams Industrial Park

231-233 E Johnson Street • Cary, NC 27513



FOR
LEASE



919.878.6504



Michael Kornegay
Ext. 213 • michael@callca.com

Clark Womack
Ext. 214 • clark@callca.com

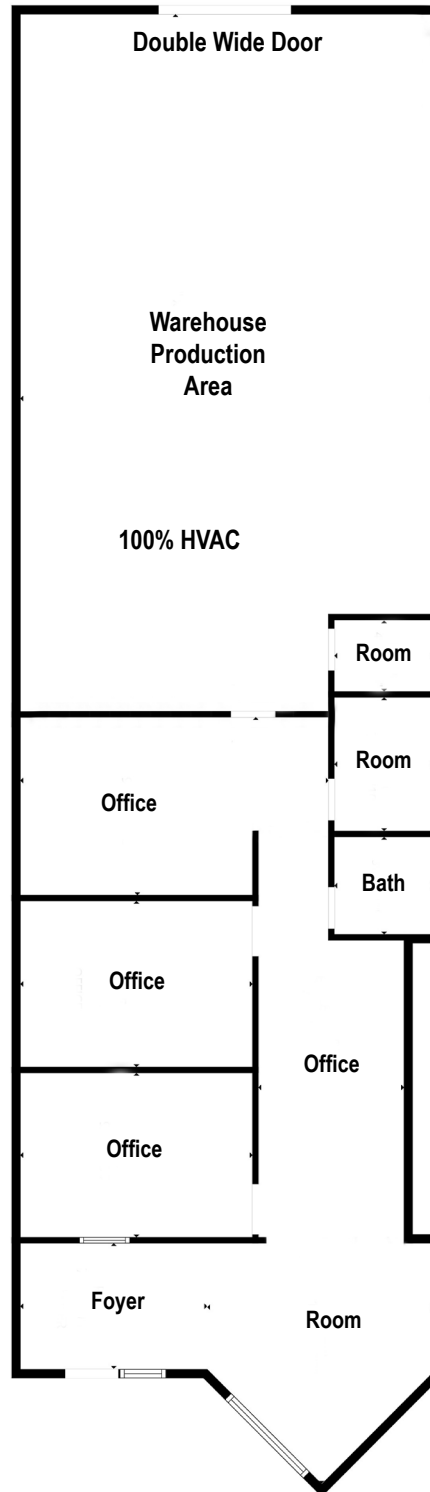
Adams Industrial Park

231-233 E Johnson Street • Cary, NC 27513



FOR
LEASE

231-J
2,065 SF



919.878.6504



Michael Kornegay
Ext. 213 • michael@callca.com

Clark Womack
Ext. 214 • clark@callca.com

Adams Industrial Park

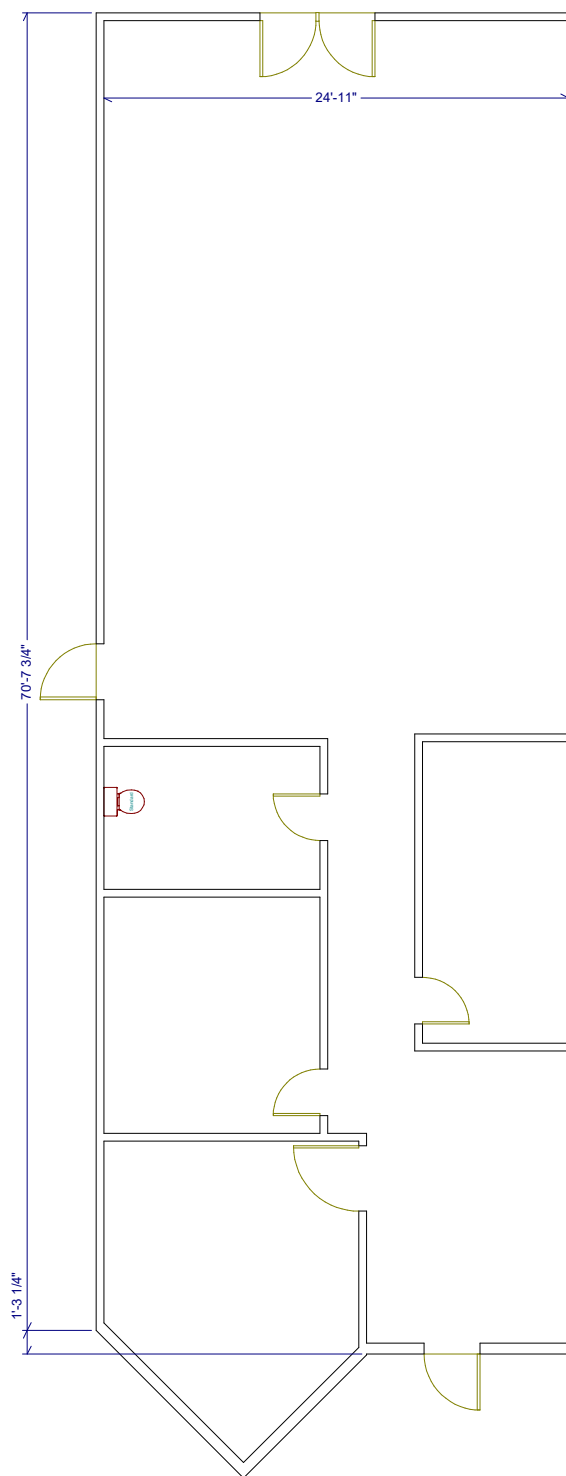
231-233 E Johnson Street • Cary, NC 27513



FOR
LEASE

233-Q
1,815 SF

Ground Level Door



919.878.6504



Michael Kornegay
Ext. 213 • michael@callca.com

Clark Womack
Ext. 214 • clark@callca.com