

1400 Middlesex Street Lowell, MA

±65,000 SF Manufacturing Building
For Lease or Sale



1400 Middlesex Street / Lowell, MA

Industrial Manufacturing Opportunity

JLL is pleased to present 1400 Middlesex Street in Lowell, MA, offering flexible industrial space in a prime Gateway City location. The property provides excellent access to Interstate 495 and Route 3, connecting tenants to Greater Boston and New Hampshire markets. The facility features multiple loading configurations and clear span warehouse space adaptable to manufacturing, distribution, or logistics operations. Lowell's strategic position and business-friendly environment make this an attractive opportunity for companies seeking cost-effective industrial space with strong regional connectivity.

Premises details

Availability ±65,000 SF

Timing Immediate

Term Negotiable

Building Specifications

Building Area ±65,000 SF

Office Area ±7,800 SF

Clear Height 13' - 16'

Loading Docks Eight (8)

Drive-in Doors Three (3)

Parking 66 spaces

Lighting LED

Land Area ± 4.92 acres

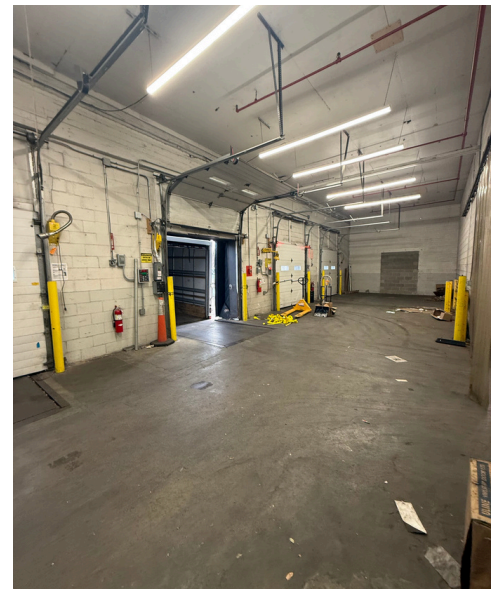
Zoning Light Industrial

Utilities

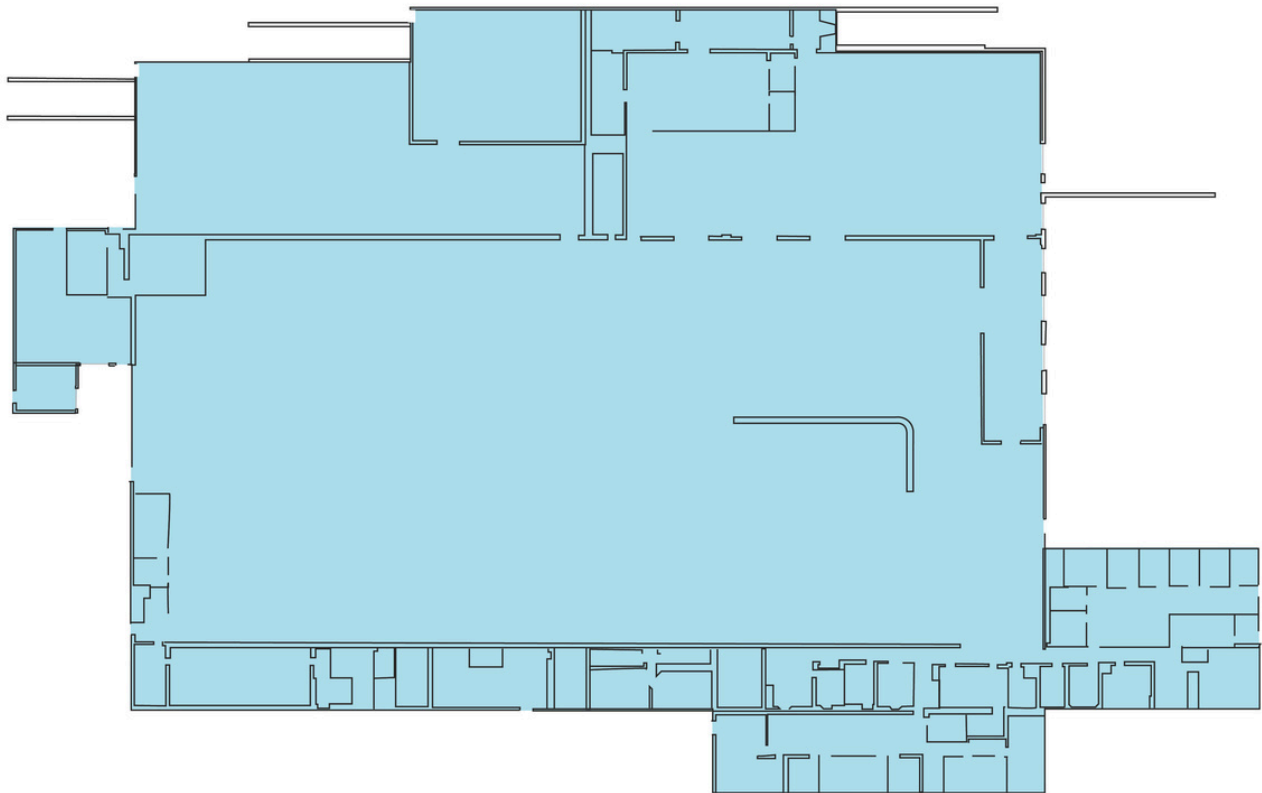
Electric National Grid

Gas National Grid

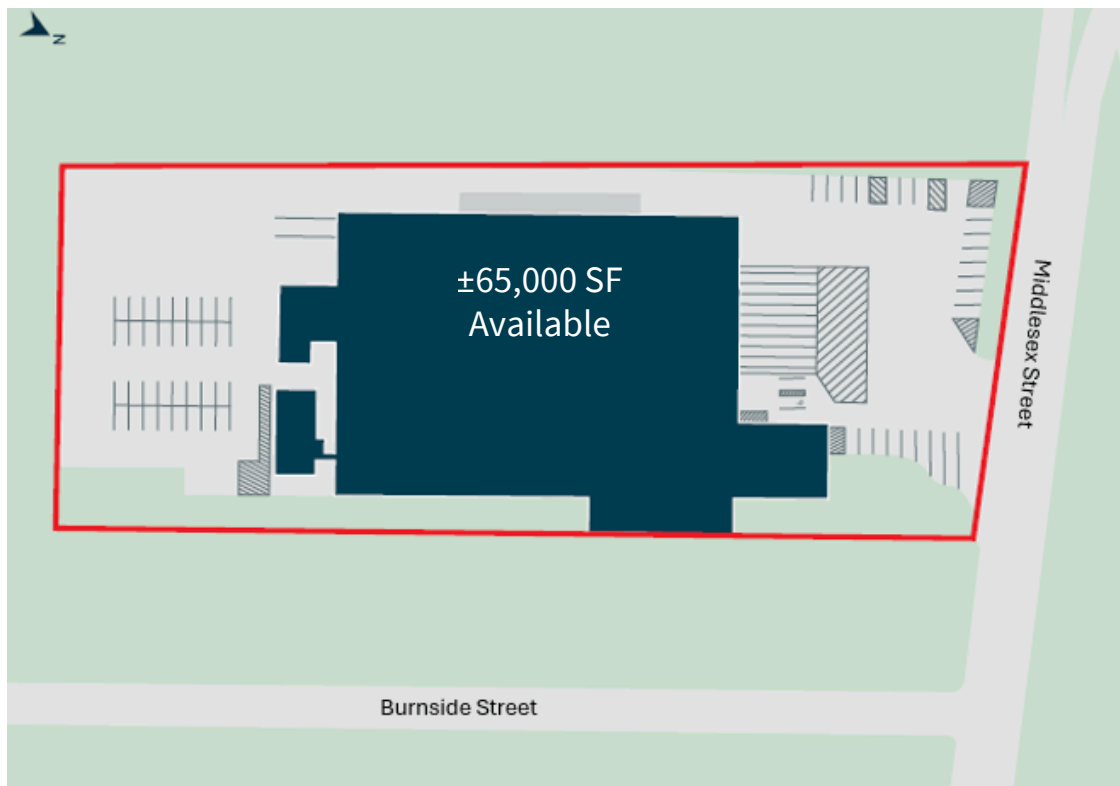
Water Town of Lowell



Floor Plan



Site Plan

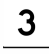



1400 Middlesex Street / Lowell, MA

Location Map



Drive Times

	2.5 miles	7 mins
	2.8 miles	8 mins
	31 miles	40 mins
	40 miles	45 mins
Boston		
Worcester		



Contact us

Joe Fabiano

Senior Managing Director

Joe.Fabiano@jll.com

+1 781 844 7893

James Lipscomb

Managing Director

James.Lipscomb@jll.com

+1 617 833 3777

Chelsea Andre

Senior Vice President

Chelsea.Andre@jll.com

+1 781 844 7893

Kendall Sullivan

Associate

Kendall.Sullivan@jll.com

+1 781 241 3982

jll.com

Jones Lang LaSalle Americas, Inc. License #: C0508577000