

NEW CONSTRUCTION
40,000-146,787 SF
For Lease



3080 Bilter Road

Aurora, IL

22 Trailer Stalls

Trailer Parking

3,100 SF

Spec Office (Expandable)

29 Exterior Docks

20 Fully Equipped

Specifications

Available	40,000-146,787 SF
Building Size	146,787 SF
Site	9.50 acres
Ceiling Height	32' clear
Spec Office:	3,100 SF (expandable)
Loading	29 ext docks (20 fully equipped) 2 drive-in doors
Trailer Parking	22 trailer stalls
Power	2,500 amps

Features

- Insulated precast panels
- 60 mil TPO roof with 20-year warranty
- 7" unreinforced slab with compacted aggregate base.
- Ample trailer parking provided on site
- Low DuPage County Taxes
- Access to I-88 via Eola Road, Farnsworth Avenue, and Route 59



NOEL S. LISTON
Managing Broker
nliston@coreindrealty.com
630-786-2424

NICK KREJCI
Partner
nkrejci@coreindrealty.com
630-200-3874

3080 Bilter Road

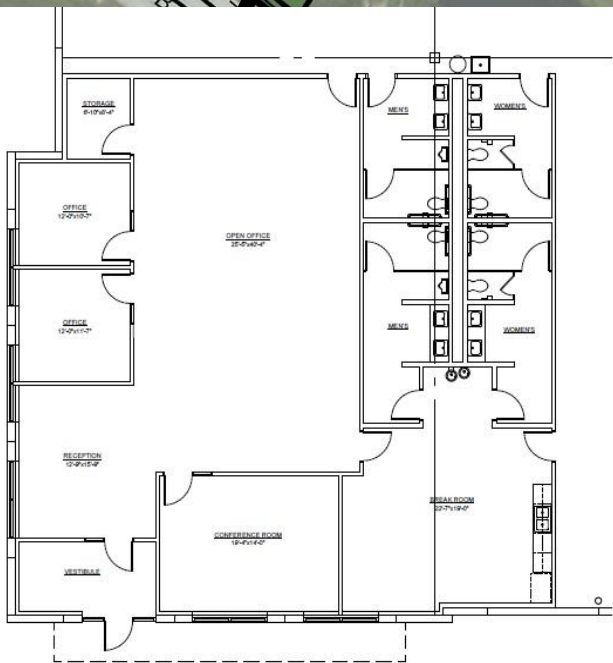
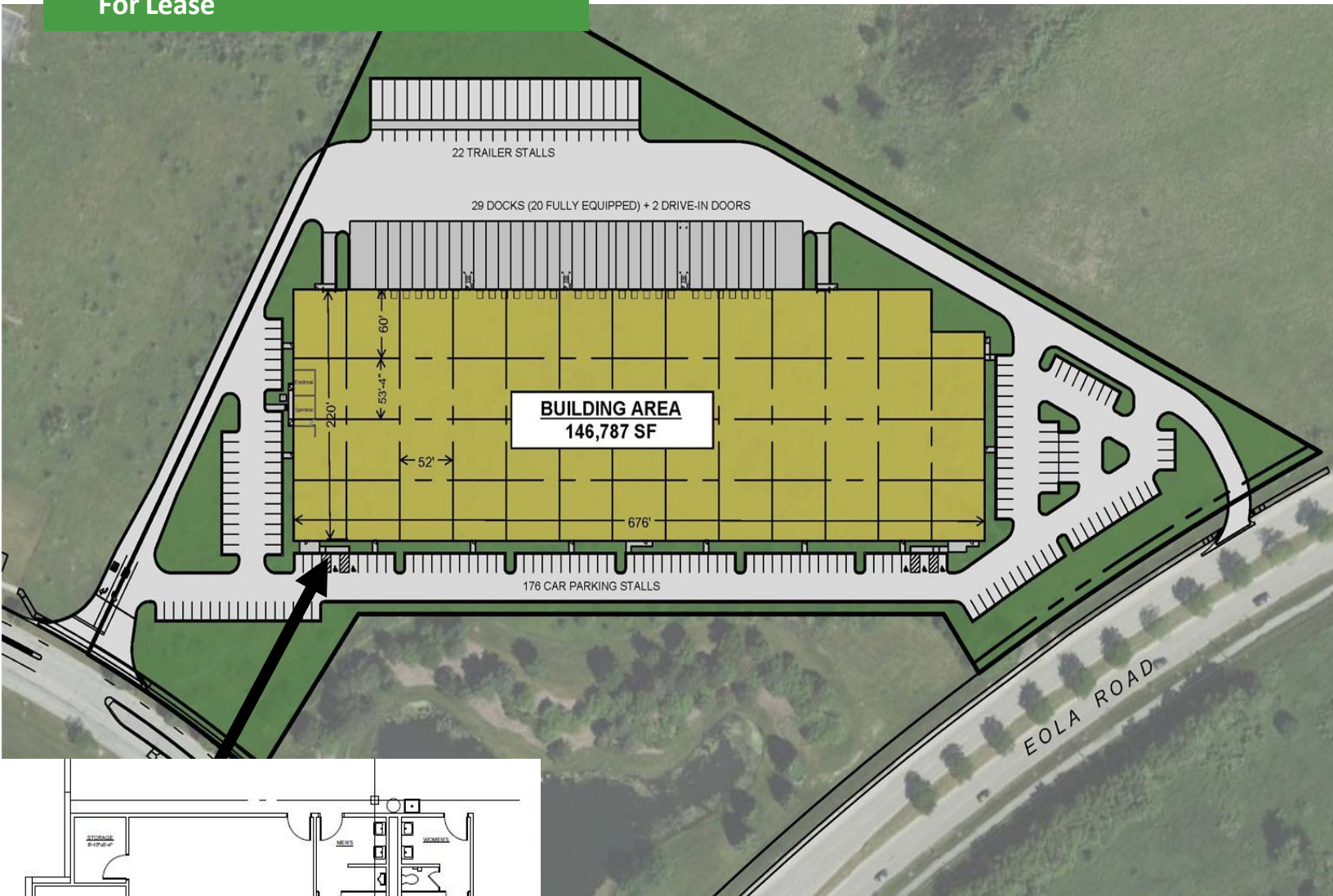
Aurora, Illinois

40,000-146,787 SF

For Lease



HIGH STREET
LOGISTICS PROPERTIES



CORE INDUSTRIAL REALTY

1211 W. 22nd Street, Suite 529
Oak Brook, IL 60523
coreindrealty.com | 630-786-2424

NOEL S. LISTON
Managing Broker
nliston@coreindrealty.com
630-786-2424

NICK KREJCI
Partner
nkrejci@coreindrealty.com
630-200-3874

Submitted subject to error, change in status or withdrawal without notice.

3080 Bilter Road
 Aurora, Illinois
40,000-146,787 SF
 For Lease



Access to I-88 via Eola Road, Farnsworth Avenue, and Route 59.



NOTABLE DISTANCES

Logistics Parks

UP Intermodal Center (Joliet)	45 minutes
BNSF Railway Logistics Park (Elmwood)	50 minutes

Commuter Rail

Route 59 Station	4.6 miles, 12 minutes
Naperville Station	7.4 miles, 16 minutes

DESTINATIONS

O'HARE International Airport	40 minutes
Midway International Airport	47 minutes

VEHICLES PER DAY

I-88 Expressway	110,400
-----------------	---------

DEMOGRAPHICS within 10-Mile Radius

Population

729,208

Labor Force

Aurora, IL maintains a strong labor force participation rate with key sectors including manufacturing, retail, and healthcare. (406,521 as of 2024)

Average Household Income

\$131,980

CORE INDUSTRIAL REALTY

1211 W. 22nd Street, Suite 529
 Oak Brook, IL 60523
 coreindrealty.com | 630-786-2424

NOEL S. LISTON
 Managing Broker
nliston@coreindrealty.com
 630-786-2424

NICK KREJCI
 Partner
nkrejci@coreindrealty.com
 630-200-3874

Submitted subject to error, change in status or withdrawal without notice.