



**CRE** ADVISING  
ANY PROPERTY ON EARTH



# 802-804 WEST RANDOLPH ST

**PRIME RETAIL/RESTAURANT SPACE FOR LEASE**

WEST LOOP/FULTON MARKET

# SPACE DETAILS

## LOCATION

This Restaurant Row gateway location is situated at the definitive corner of Halsted and Randolph in the historic Fulton Market neighborhood.

## SQUARE FOOTAGE

- ▶ **First Floor:** Approximately 2,600 SF
- ▶ **Second Floor:** Approximately 5,400 SF
- ▶ **Full Basement:** Approximately 2,600 SF
- ▶ **Total Available:** 2,600-9,000 SF

## RENTAL RATE

- ▶ Upon request

## HIGHLIGHTS

- ▶ Don't miss an opportunity of a lifetime to occupy this premier corner location in Chicago's nationally renowned Fulton Market District!
- ▶ 6,600 SF available over two floors with an additional 1,400 SF expandable space option on the second floor for a total of 8,000 SF total available maximum
- ▶ Turn-key opportunity includes two fully equipped kitchens, rooftop opportunity, and expanded outdoor seating
- ▶ Join the West Loop's culture of restaurants, arts, and new tech companies in this highly trafficked square on Randolph!
- ▶ Neighboring restaurants include the likes of Au Cheval, The Girl and the Goat, Aba, Publican, Nobu, Momotaro, Duck Duck Goat in addition to numerous other inventive, global eateries and major retailers, luxurious residential office and apartments
- ▶ Just steps from Soho House Hotel, Nobu Hotel, and right around the corner from the modern 167 Green office development which also features an upscale ground retail strip "The Mews" which includes Foxtrot, The Oakville (Lettuce Entertain You), Aper, and Yokocho
- ▶ The neighborhood boasts high traffic counts and high visibility coming off 90/94 Randolph highway exit.

## DEMOGRAPHICS

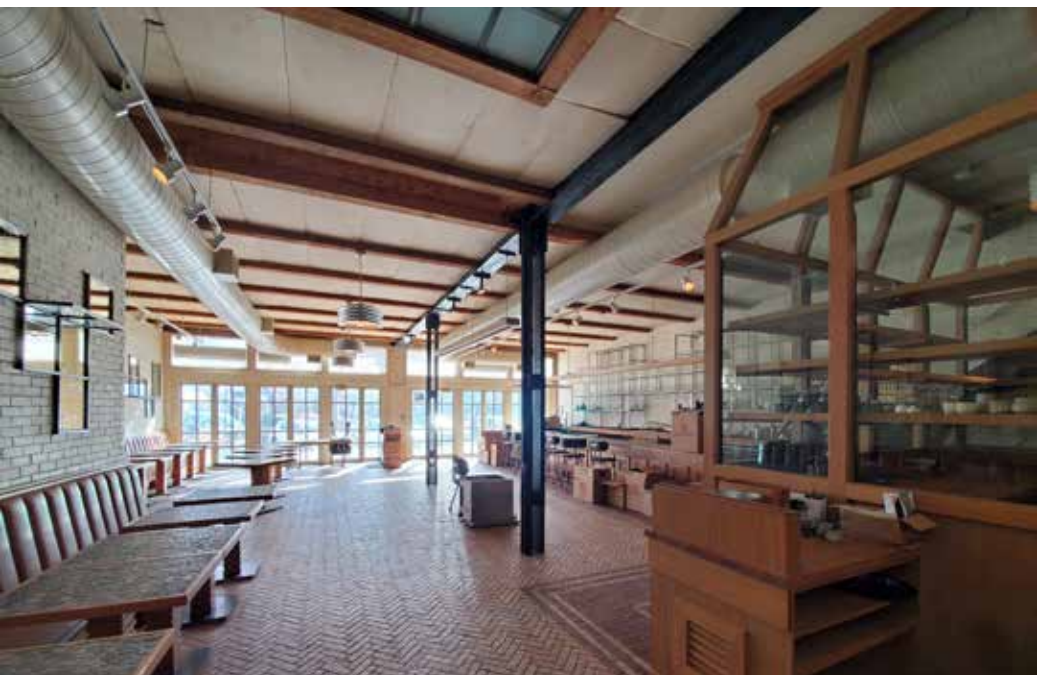
	1 MI	3 MI
POPULATION	74,130	462,573
HOUSEHOLDS	42,574	243,891
MEDIAN HH INCOME	\$136,057	\$110,008
DAYTIME EMPLOYEES	335,595	712,105

*No representation or warranty is made to the accuracy herein. All broker opinions are subject to market conditions.*



# INTERIOR PHOTOS

FIRST FLOOR



# INTERIOR PHOTOS

## SECOND FLOOR



# INTERIOR PHOTOS

## SECOND FLOOR



# INTERIOR PHOTOS

## KITCHENS

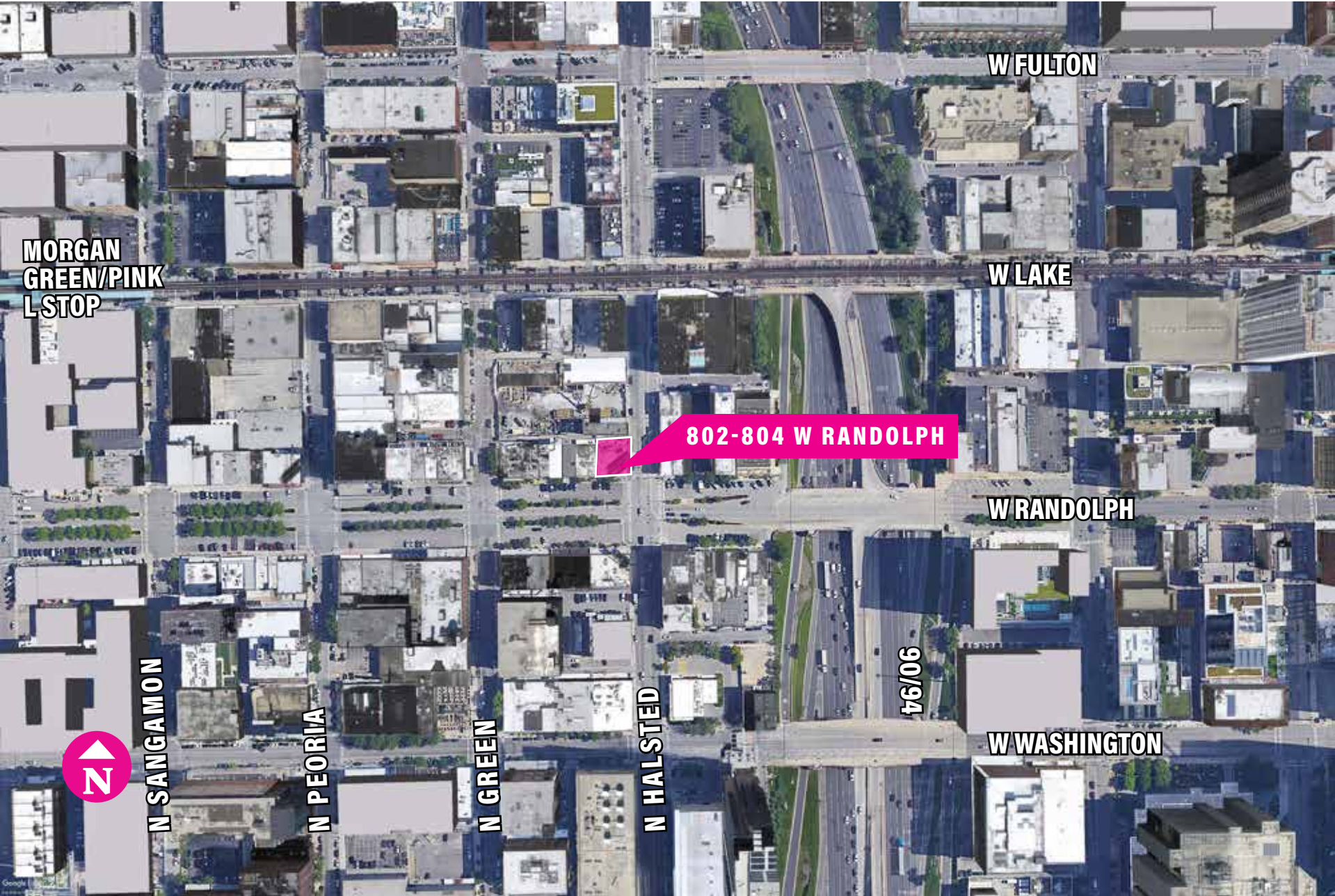


# INTERIOR PHOTOS

## KITCHENS



# AERIAL MAP



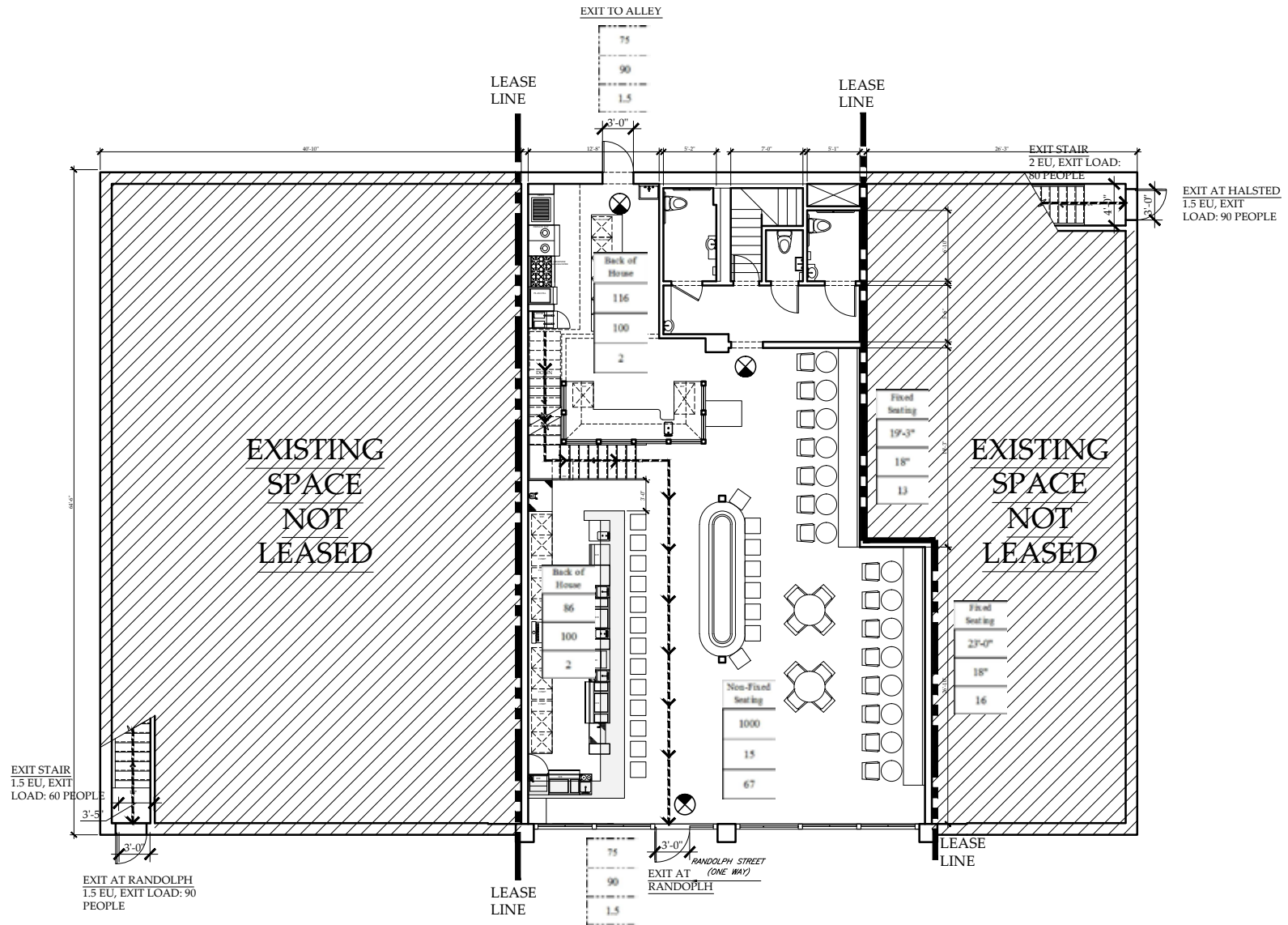
# AERIAL MAP



# SPACE PLANS

## FIRST FLOOR

SUBJECT TO VERIFICATION AND DUE DILIGENCE OF THE RECIPIENT



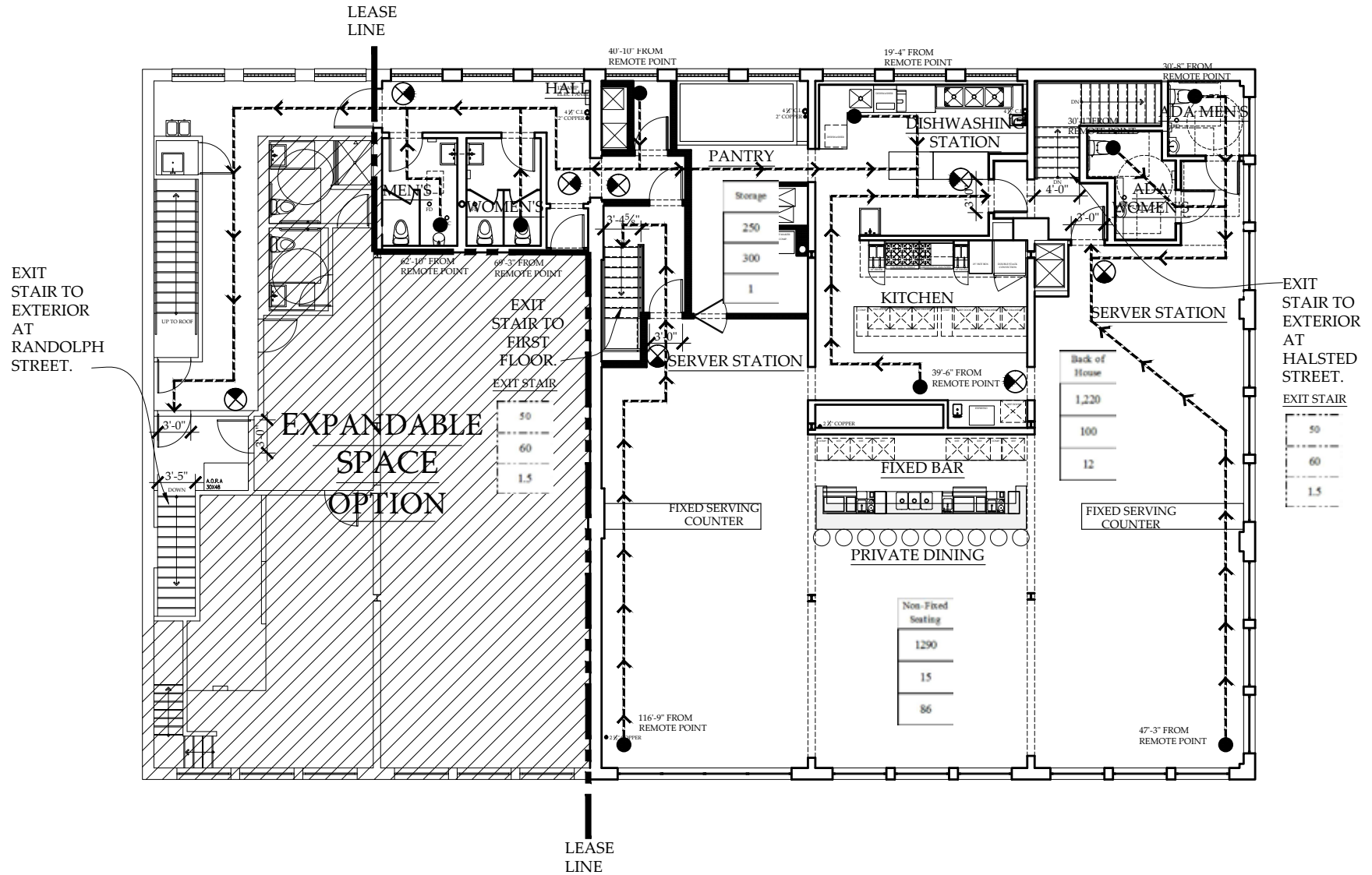
**I** FIRST FLOOR EXITING DIAGRAM- FOR REFERENCE ONLY  
SCALE: 1/8" = 1'-0"



# SPACE PLANS

## SECOND FLOOR

SUBJECT TO VERIFICATION AND DUE DILIGENCE OF THE RECIPIENT



**2** SECOND FLOOR EXITING DIAGRAM- FOR REFERENCE ONLY  
SCALE: 1/8" = 1'-0"





**802-804 WEST  
RANDOLPH ST  
CHICAGO, IL 60607**

EXCLUSIVE AGENTS

**STEVE HORVATH**  
630.430.4300  
Steve@creadvising.com

**JOE GLORIA**  
847.638.0828  
Joseph@creadvising.com



**CRE ADVISING**

ANY PROPERTY ON EARTH

405 WEST SUPERIOR STREET, SUITE 608  
CHICAGO, IL 60654

312.448.6401 [www.creadvising.com](http://www.creadvising.com)