

ACTIVE - 10 ACRES

COMPASS



15170 North Mallard Lane, Estero

6 BD 7 BA 5883 SF \$2,500,000

10 ACRES - NO WETLANDS

ZONED RESIDENTIAL AND
AGRICULTURAL

15170 North Mallard Ln

6 BD 7 BA 5883 SF \$2,500,000



Ideal for Equestrians, Builders, and those that love space & versatility!

This 10-acre gated estate offers a rare blend of privacy and versatility just five miles from RSW Airport. Zoned AG-2 for residential and equestrian use, the property is situated entirely in Flood Zone X with no wetlands. With five additional acres of buildable land, the compound provides significant room for expansion, all while being just minutes from I-75, schools, and local amenities.

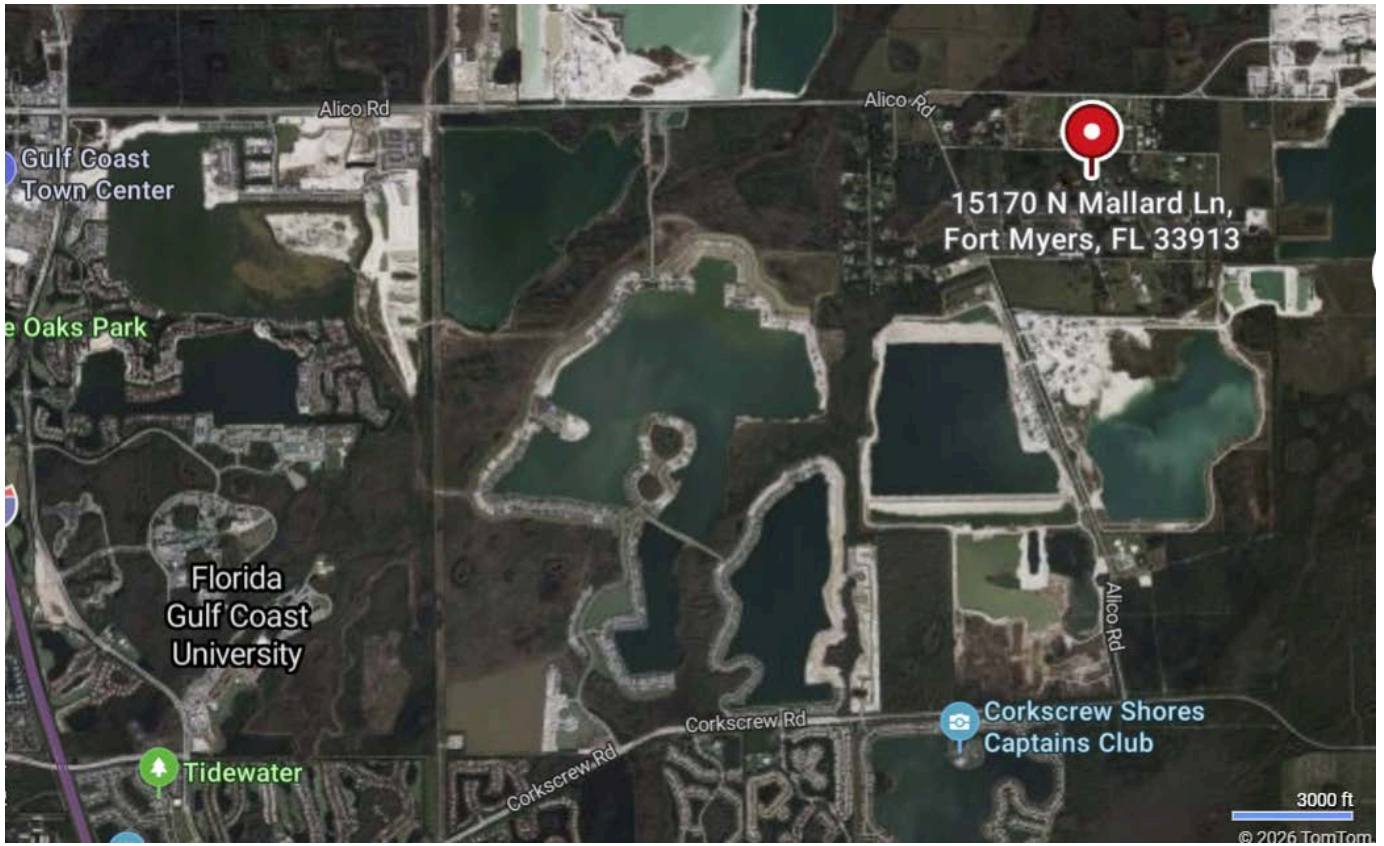


The 5,385 sq ft living area includes a 2-story Colonial-style main home and guest quarters, totaling 9 bedrooms and 7 bathrooms. Most structures utilize energy-efficient AAC block construction, keeping monthly utilities at a remarkable \$300. The home features a wood-burning fireplace, screened porch, and finished garage, plus a swimming pool and a unique wood house nestled above the barn.

The equestrian facilities are designed for serious owners, featuring a 3,780 sq ft metal barn and a 2,160 sq ft finished wood stable that accommodate up to 10 horses. The infrastructure is supported by a dedicated riding arena, a round pen, and a 760 sq ft pole shed. For additional utility, a 5,000 sq ft former airplane hangar serves as an expansive workshop for farm machinery or recreational vehicles.



The landscape is highlighted by two natural ponds and mature fruit trees, providing a tranquil atmosphere with city water available at the street. Whether utilized as a private family compound, a working farm, or an equestrian retreat, this property delivers rural tranquility with modern accessibility. The land and infrastructure are fully in place to bring your vision to life.



Key Details

Status: Active

MLS #: 226010814

DOM: 33

Taxes: \$5,568 / year

HOA Fees: 0

Property Type: Mixed Use

Residential / Single Family

Year Built: 1990

Lot Size: 10.02 AC

County: Lee County



Air Conditioning

Attached Garage

Carpet Floors

Ceiling Fan

Central AC

Central Heating

Common Outdoor Space

Dishwasher & Disposal

Fence

Garage

Gated Community

Laundry in Building

Pantry

Pet Friendly

Pond Views & Waterfront

Private Outdoor Space

Private Pool

RV Parking

Range

Refrigerator

Security System

Tile Floors

Wall Heaters



Jeff Tyson

Co-Principal | Broker Associate

Global Luxury Home Advisor

M: 239.850.3403

jeff.tyson@compass.com



Cindy Cyrus

Principal | Broker Associate

Global Luxury Home Advisor

M: 239.290.4292

cindy.cyrus@compass.com

