

1422 Delgany St.

DENVER, CO 80202

Suite 300

5,819 SF



Rate:

Contact Broker



Term:

Through June 30, 2026



Furniture:

Available



100% Structured Parking:

3 Covered Spaces
Additional Parking Available

[View the
Virtual Tour](#)



Plug and Play

*Sublease opportunity at
the border of LoDo and
Union Station*

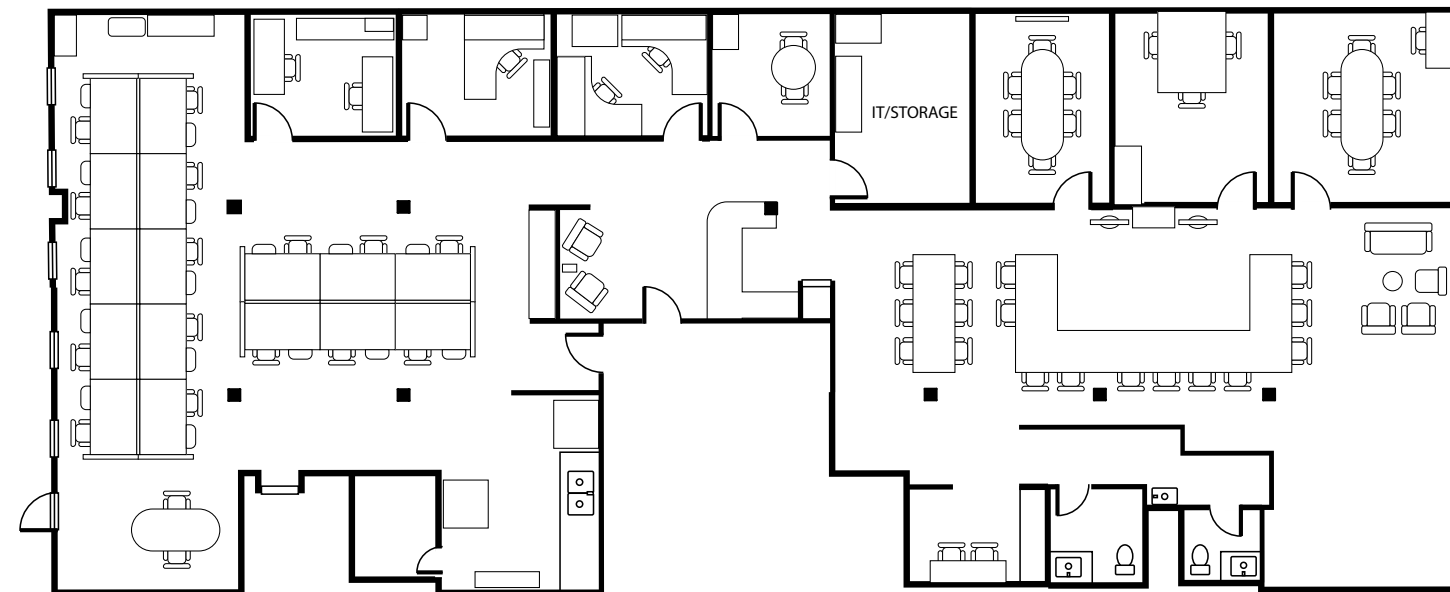


Suite 300

5,819 SF

1422 Delgany is located at the edge of Riverfront Park, just off Little Raven Street. The Millennium Bridge connects directly to Downtown Denver, with endless options for dining, entertainment, and nightlife, while RTD light rail and Amtrak at Union Station provide immediate access to the city.

- Exposed ceiling beams and brick interiors
- Unbeatable walkability
- Adjacent to Speer Blvd. Park and the S. Platte River
- Miles of biking and walking trails
- Modern infrastructure
- Minutes from the bustling LoDo district, Union Station, and Coors Field





1422 Delgany St.
DENVER, CO 80202

Abby Pattillo
Principal
303 283 4579
abby.pattillo@colliers.com

Daniel Krulig
Associate
303 283 4570
daniel.krulig@colliers.com

4643 S. Ulster St. Suite 1000
Denver, CO 80237
303 745 5800
colliers.com/denver



This communication has been prepared by Colliers Denver for advertising and/or general information only. Colliers Denver makes no guarantees, representations or warranties of any kind, expressed or implied, regarding the information including, but not limited to, warranties of content, accuracy and reliability. Any interested party should undertake their own inquiries as to the accuracy of the information. Colliers Denver excludes unequivocally all inferred or implied terms, conditions and warranties arising out of this document and excludes all liability for loss and damages arising there from. This publication is the copyrighted property of Colliers Denver and/or its licensor(s). © 2023. All rights reserved. This communication is not intended to cause or induce breach of an existing listing agreement.