



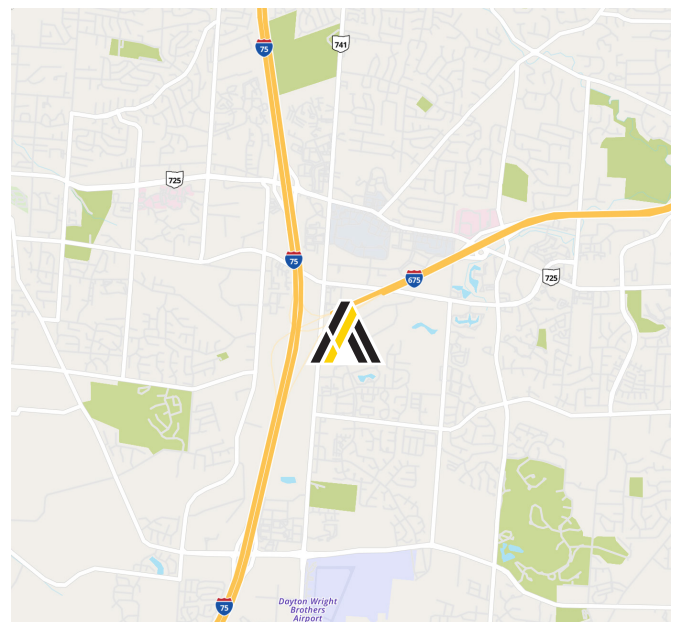
Newmark Centre XI

3571-3615 Newmark Drive
Miamisburg, Ohio 45342

LEASE RATE:
\$16.50 PSF MODIFIED GROSS

Property Highlights

- **2 Suites Available:**
 - 3615 Newmark Drive - 3,142± SF
 - 6 Private offices, 1 break room, 1 conference room and cubicle area with a private, first floor entrance.
 - 3571 Newmark Drive - 3,471± SF
 - **Fully Furnished** with 3 offices, 1 conference room and 1 break room.
- **Ample On-Site Parking:** Easy access for employees and visitors.
- **Premier South Dayton Business Park Setting:** Ideally located in a secure, well-maintained building within a professional campus-style environment between SR 741 and Lyons Road with quick and convenient access to I-75 and I-675.
- **Strong Accessibility:** Easily accessible to more than 22,000 vehicles per day on SR 741.
- **Abundant Nearby Amenities:** Surrounded by multiple restaurants, retail, and services—ideal for lunch breaks, errands, and client meetings.
- **Tax Advantage Location:** Situated in Miami Township with no city income tax.



Matt Tunnacliffe

Commercial Sales & Leasing

513.200.8270

Matt.Tunnacliffe@ApexCommercialGroup.com

Demographics

	1 Mile	3 Mile	5 Mile
Total Population	8,716	62,302	143,471
Total Households	4,586	27,765	60,715

Newmark XI

3571-3615 Newmark Drive
Miamisburg, Ohio 45342



Photos - 3615 Newmark Drive

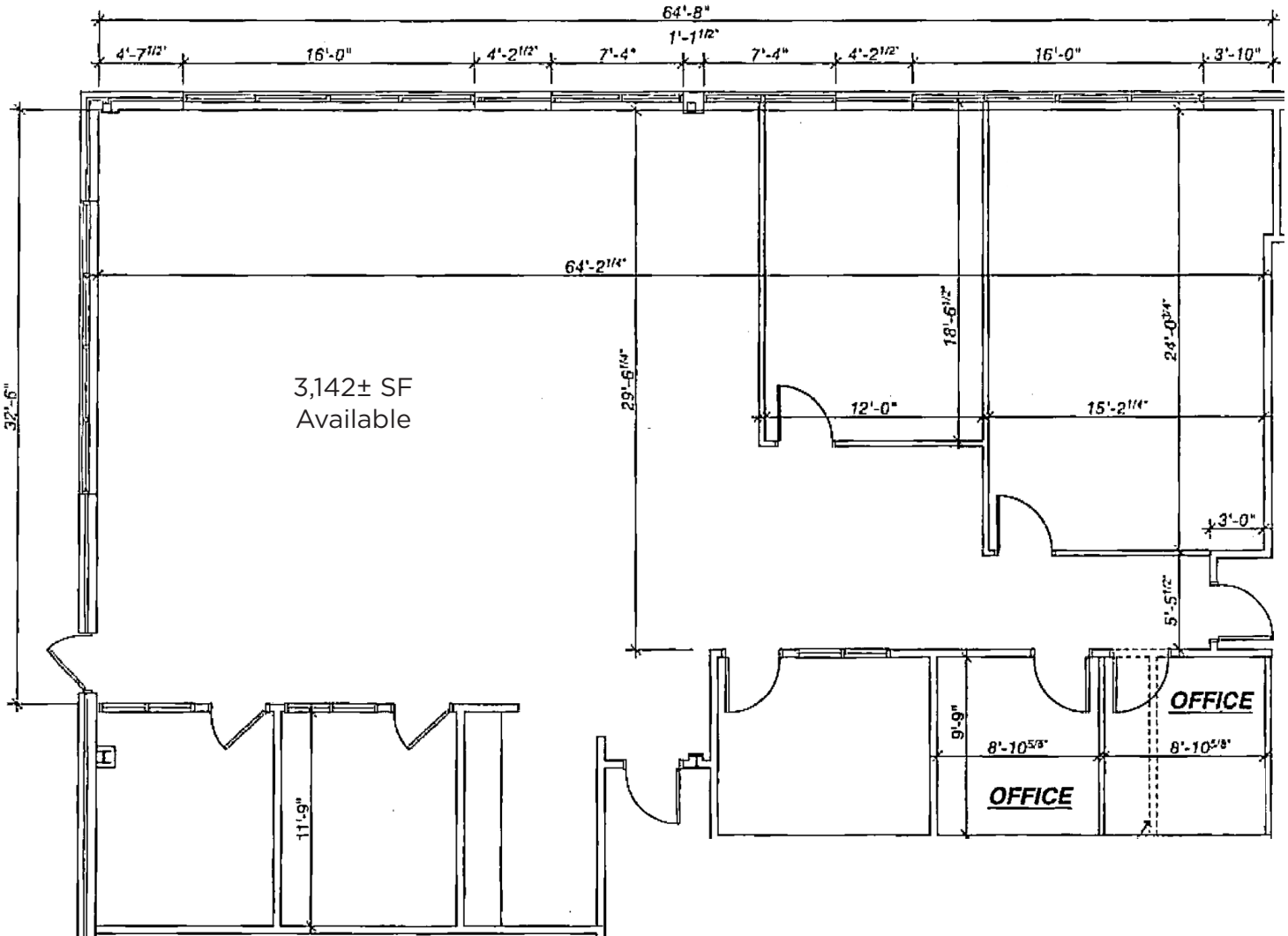


ApexCommercialGroup.com

Newmark XI

3571-3615 Newmark Drive
Miamisburg, Ohio 45342

Floor Plan - 3615 Newmark Drive



Newmark XI

3571-3615 Newmark Drive
Miamisburg, Ohio 45342

Photos - 3571 Newmark Drive

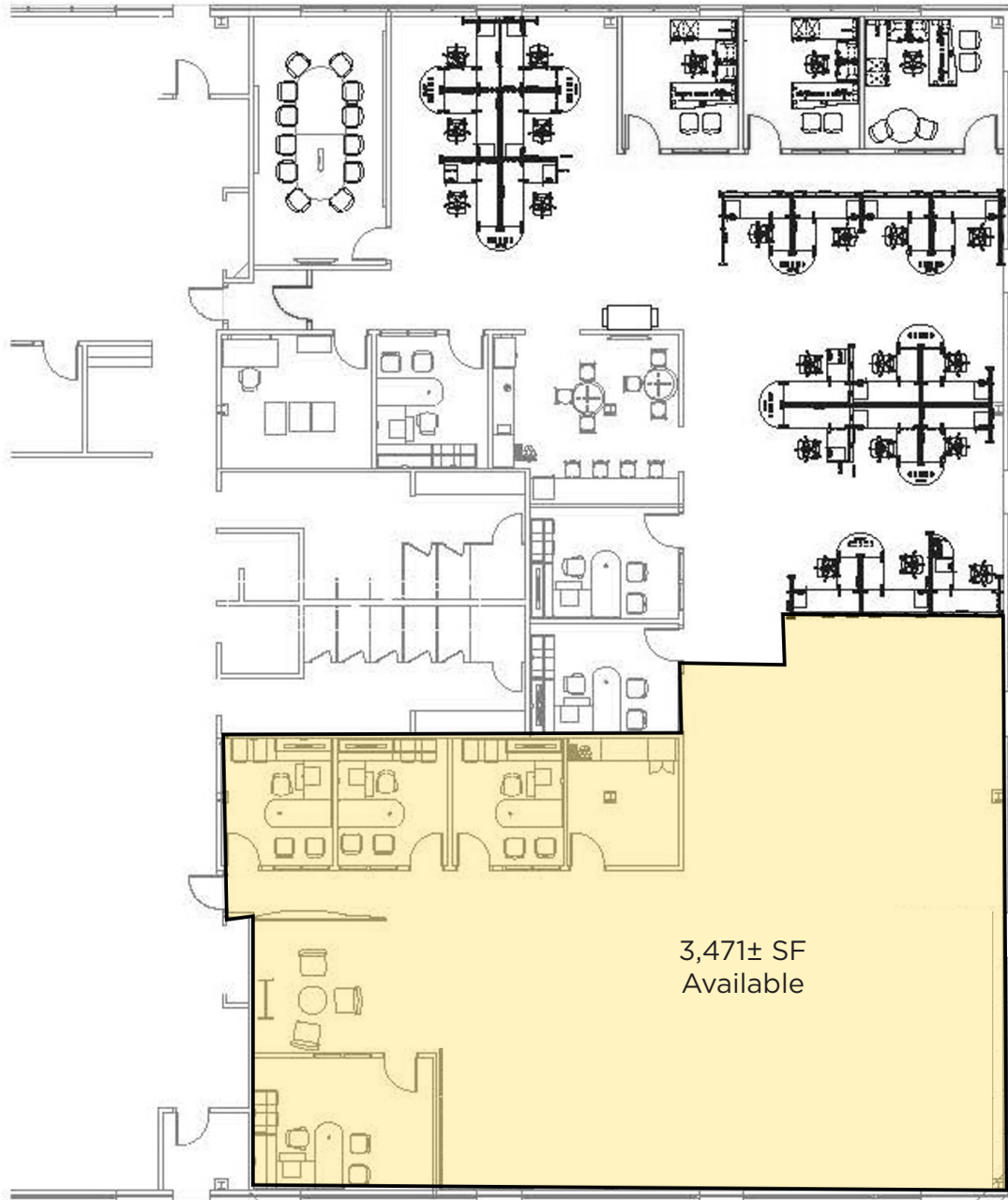


ApexCommercialGroup.com

Newmark XI

3571-3615 Newmark Drive
Miamisburg, Ohio 45342

Floor Plan - 3571 Newmark Drive



Newmark XI

3571-3615 Newmark Drive
Miamisburg, Ohio 45342



Photo



Aerial



ApexCommercialGroup.com

Newmark XI

3571-3615 Newmark Drive
Miamisburg, Ohio 45342

Aerial

