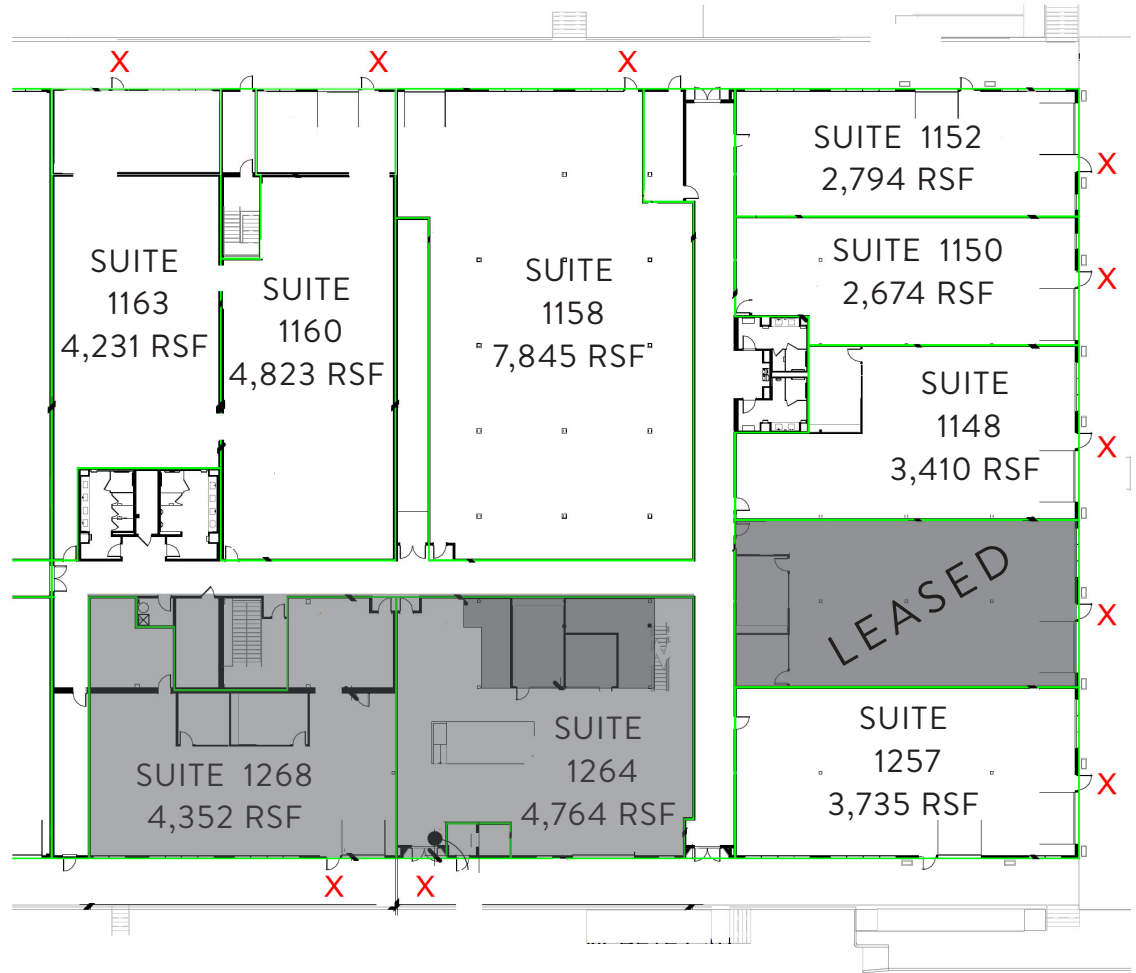


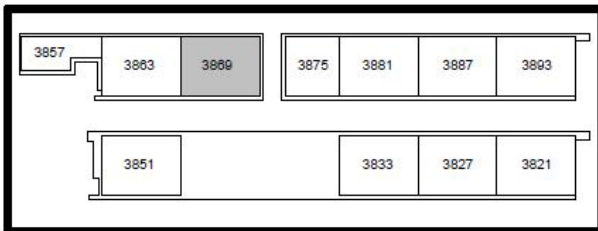


3869 N STEELE ST



■ = MEZZANINE

✗ = TENANT PRIMARY ENTRANCE



For Leasing Information, Contact:

ANDREW PIEPGRAS
 Vice President
 303.226.8209
 APiepgras@LPC.com

MARK DWYER
 Vice President
 303.226.8212
 MDwyer@LPC.com

