

FOR LEASE  
1500

LAKE SHORE DR  
COLUMBUS, OH

UNDER NEW OWNERSHIP



[www.alliedre.com](http://www.alliedre.com)

# 1500 LAKE SHORE DR

1500 Lake Shore Dr is a multi-tenant office building located in the thriving Grandview Heights / Upper Arlington submarket of Greater Columbus, Ohio.

**RECENT PROPERTY UPGRADES!**



## BUILDING FEATURES



Recently renovated lobby



Terrific access to Dublin Road and all major freeways



Abundant parking available free of charge to tenants



On-site fitness facility



# BUILDING AVAILABILITY

SUITE	RSF	RATE/RSF/YR	DETAILS
225	1,790	\$14.95 NNN	Efficient suite configuration Available: November 1st, 2026
*300	3,106	\$14.95 NNN	Efficient buildout and open suite configuration Available: July 1st, 2026
*350	2,679 - 7,252 <i>Option to Demise</i>	\$14.95 NNN	Flexible suite configuration with scenic wooded views Available Now

Operating Expenses are currently estimated to be \$9.24 PSF  
 \*Option to combine Suite 300 & Suite 350 for total of 10,358 SF



## LOCATION

1500 Lake Shore is conveniently located in the Grandview Heights / Upper Arlington Submarket with abundant nearby amenities and terrific access to Dublin Rd and all major freeways

### GRANDVIEW HEIGHTS



## NEARBY AMENITIES

- DK Diner
- El Vaquero Mexican Restaurant
- Emelio's Restaurant
- Bob Evans
- Chicken Salad Chick
- Roots Natural Kitchen
- Bada Bean Bada Booze
- York Steak House
- Kroger
- Gants Pizza
- Fifth Third Bank
- Heartland Bank
- Huntington Bank
- Dan the Baker
- Modo Yoga
- Butcher Shop Fitness
- Grandview Pro Fitness
- Planet Fitness
- UA Fitness
- Cambridge Tea House

# FLOOR PLANS

## SECOND FLOOR



Suite 225 - 1,790 SF  
Available: 11/01/26

# FLOOR PLANS

## THIRD FLOOR

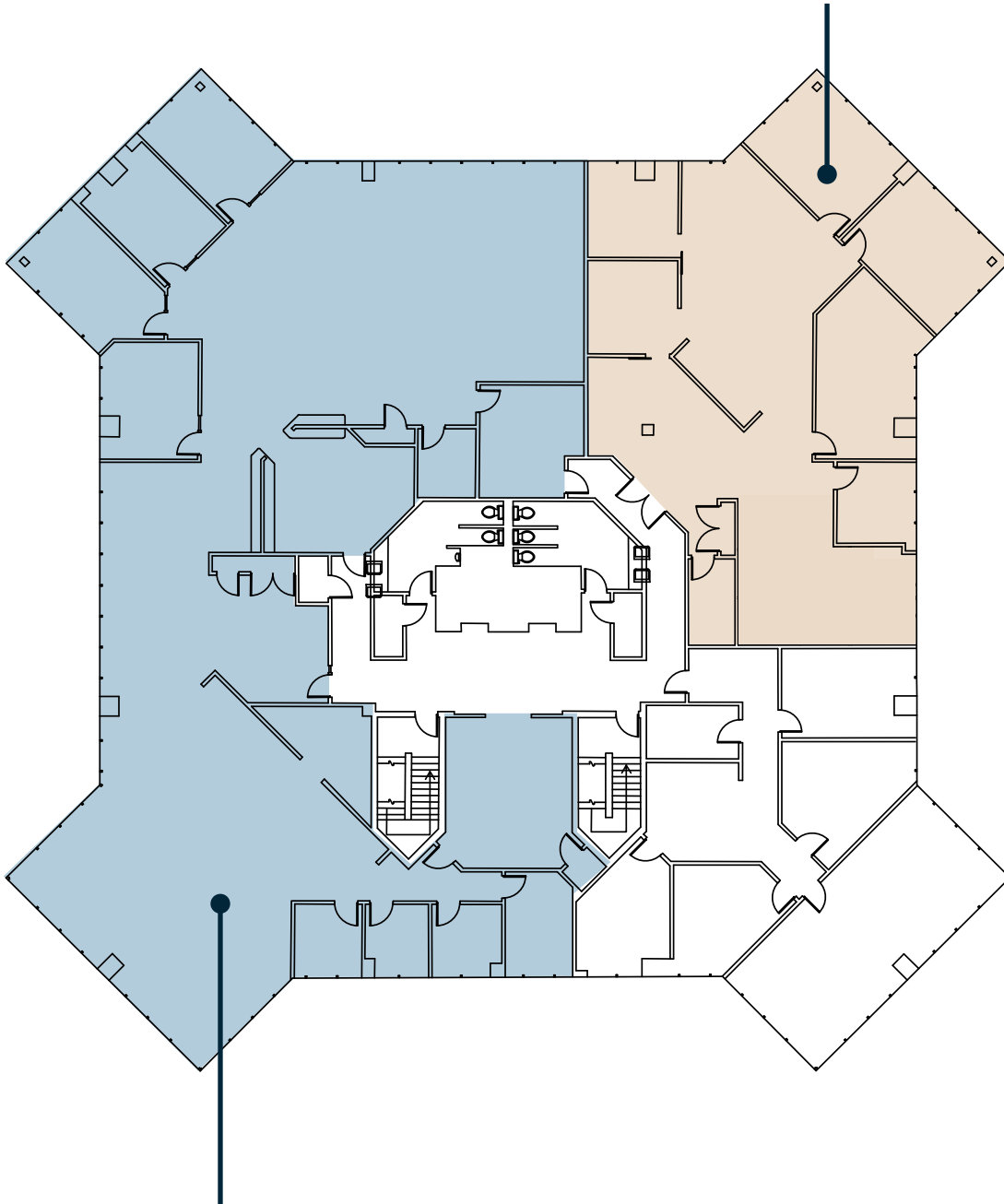


Scan QR code or [click here](#) to view 360-degree tour of Suite 300.

*\*Option to combine Suite 300 & Suite 350 for total of 10,358 SF*

**\*Suite 300 - 3,106 SF**

Available: 07/01/26



**\*Suite 350 - 7,252 SF**

Available Now

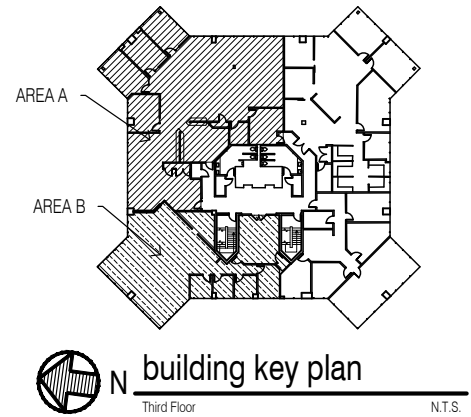
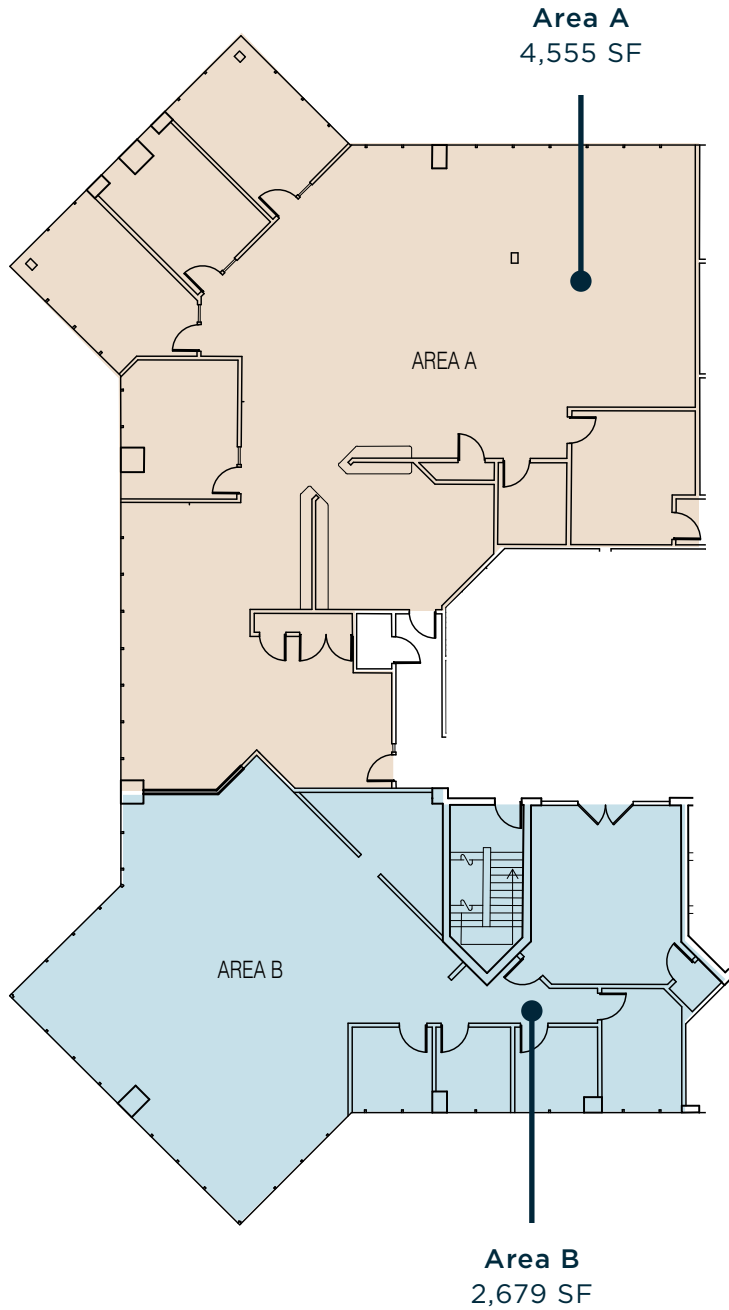


Scan QR code or [click here](#) to view 360-degree tour of Suite 350.

# FLOOR PLANS

## SUITE 350 DEMISE PLANS

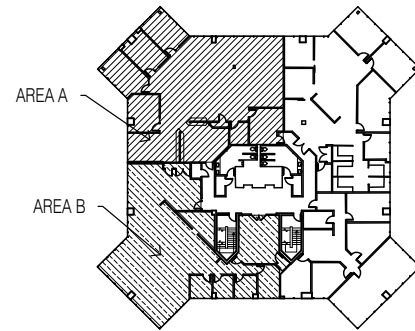
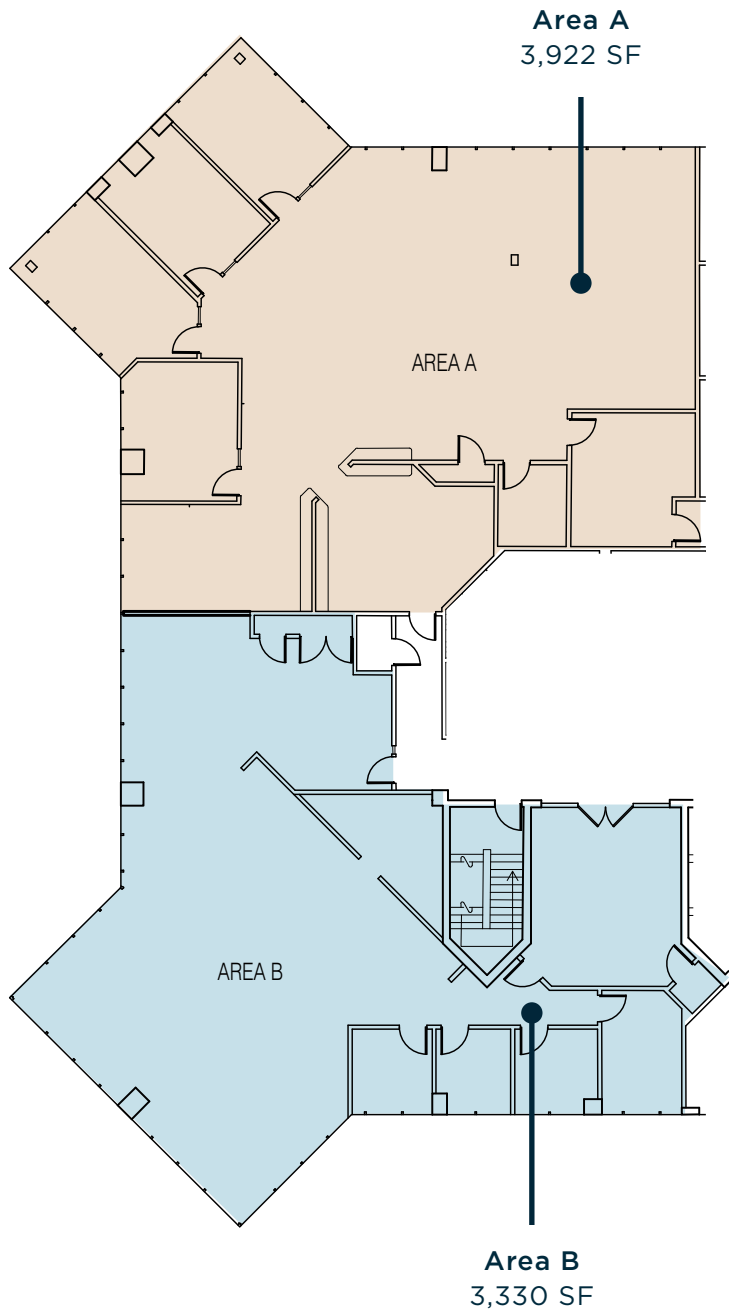
### OPTION 1



# FLOOR PLANS

SUITE 350 DEMISE PLANS

OPTION 2



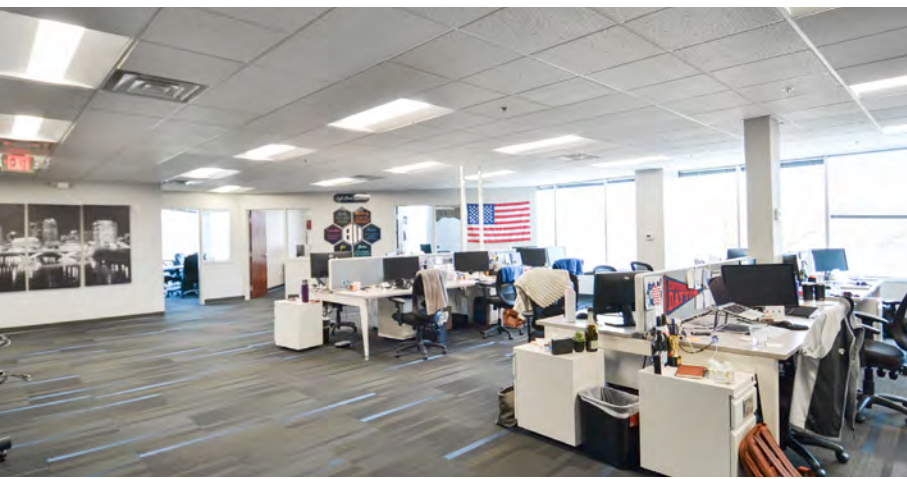
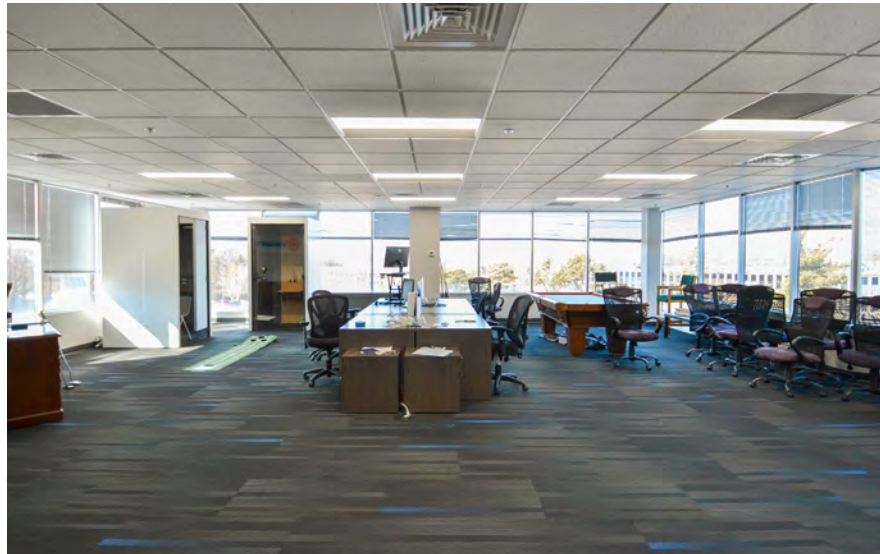
N building key plan

Third Floor

N.T.S.

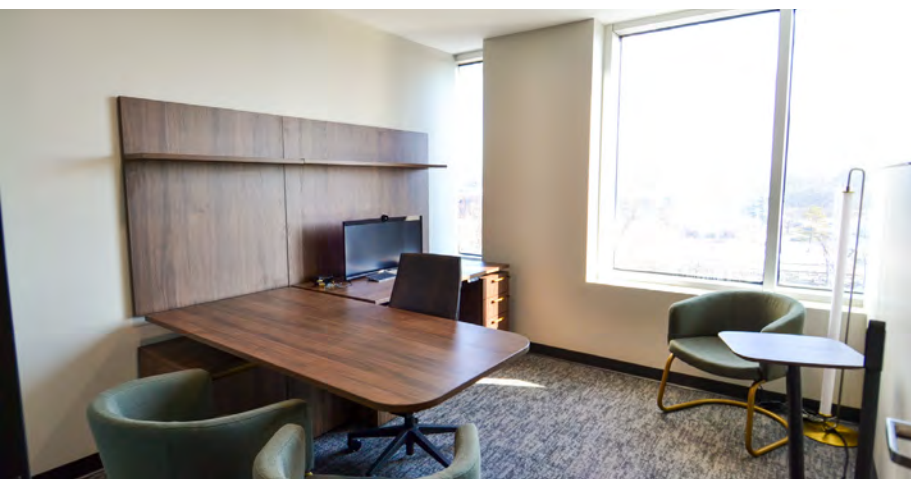
# PHOTOS

## SUITES 300 & 350



# PHOTOS

## SAMPLE TENANT FINISHES





## CONTACT US:

**Grant Hartman**  
+1 614 312 8163  
grant.hartman@alliedre.com

**Ryan McHugh**  
+1 614 940 2978  
ryan.mchugh@alliedre.com

Ownership Disclosure: Agents have an ownership interest in the property.

This document has been prepared by Allied Commercial Real Estate Advisors for advertising and general information only. Allied Commercial Real Estate Advisors makes no guarantees, representations, or warranties of any kind, expressed or implied, regarding the information including, but not limited to, warranties of content, accuracy, and reliability. Any interested party should undertake their own inquiries as to the accuracy of the information. Allied Commercial Real Estate Advisors excludes unequivocally all inferred or implied terms, conditions and warranties arising out of this document and excludes all liability for loss and damages arising therefrom. This publication is the copyrighted property of Allied Commercial Real Estate Advisors and/or its licensor(s). ©2025. All rights reserved.



[www.alliedre.com](http://www.alliedre.com)