

**1126 Gadsden Hwy  
Birmingham, AL 35235**

---



**Nina Martin-Powers**

Realtor

Alabama Real Estate License #140734-1

☎ Work 205-492-2539 | ☎ Mobile (205) 492-2539

✉ martin-powers@kw.com

🌐 undefined

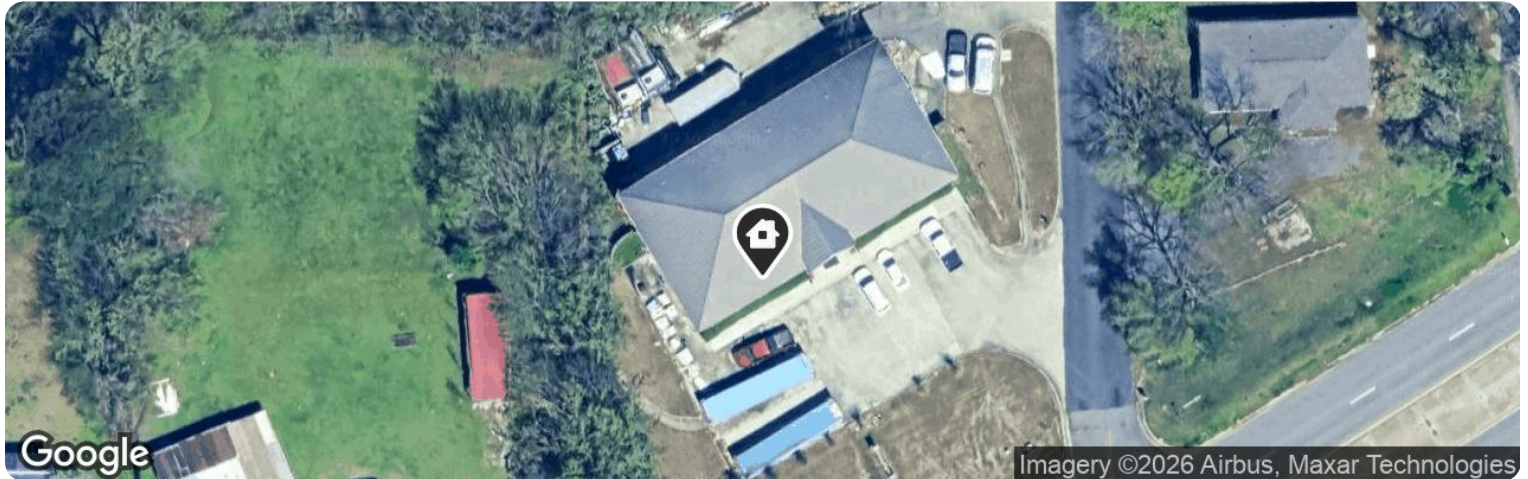


**Keller Williams Realty Hoover**

1021 Brocks Gap Parkway, Suite 125

Hoover, AL 35244





● Active / For Sale • Active: 3/10/2026

List Price

**\$1,200,000**

Active Date 3/10/2026 Listing ID 21448523

Price Per Sq Ft

**\$120**



**Office**

Type



**QB2**

Zoning



**10,000**

Sq Ft

### Guardian Building

Building Name

#### Basic Facts

Type

Office

Subtype

Miscellaneous

Days in RPR

73

Year Built

2003

Price by SqFt

\$120 per sq ft

Zoning

QB2

Land Use

Commercial Office (General)

General Use

Office Building

## Property Information

### Description

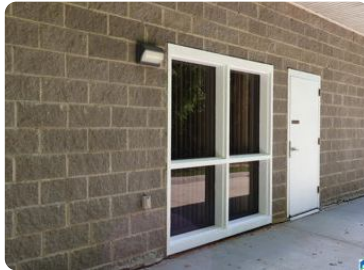
10,000 sq ft, two story, all brick office building with metal roof. 2,500 sq ft industrial storage with roll-up door for easy access. Six bathrooms including a full bath in the Executive Suite. Two separate entryways, both with reception area. Two conference rooms, one on each level. Multiple offices on each level. Located less than 1/2 mile from National Retailers: Lowe's, Starbucks, Staples, Chipotle. One mile from Target and The Pinnacle shopping complex. Easy access to I-59/I-459. Buyer to verify all facts.

This report contains data and information that is publicly available and/or licensed from third parties and is provided to you on an "as is" and "as available" basis. The information is not verified or guaranteed. Neither this report nor the estimated value of a property is an appraisal of the property. Any valuation shown in this report has been generated by use of proprietary computer software



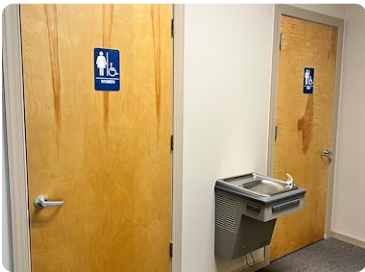
# Photos

## Listing Photos



# Photos

## My Photos



## About RPR

- RPR® is the nation's largest property database, exclusively for REALTORS®. It empowers REALTORS® to help buyers and sellers make informed decisions, backed by a real estate database covering more than 160 million residential and commercial properties in the United States.
- RPR is a wholly owned subsidiary of the National Association of REALTORS® and a member benefit to REALTORS®.
- RPR's data sources range from MLSs and county-level tax and assessment offices, to the U.S. Census and FEMA, to specialty data set providers such as Esri (consumer data), Niche (school information) and Precisely (geographic boundaries).

## Learn More

For more information about RPR, please visit RPR's public website: <https://blog.narrpr.com>

