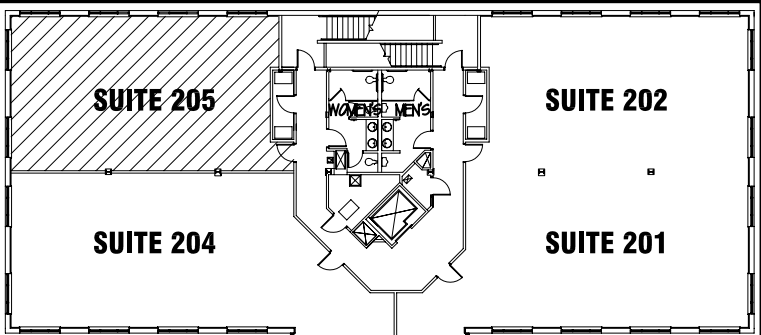
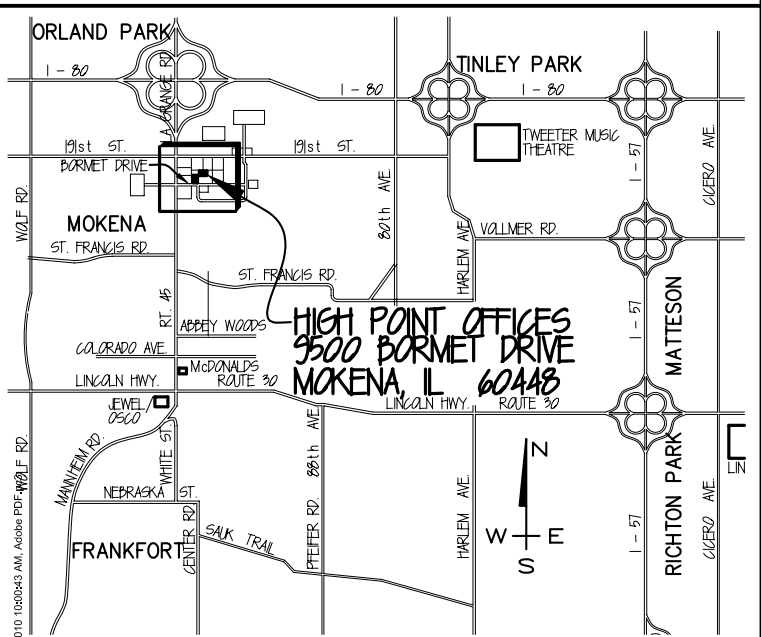
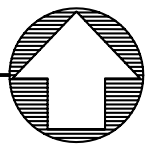


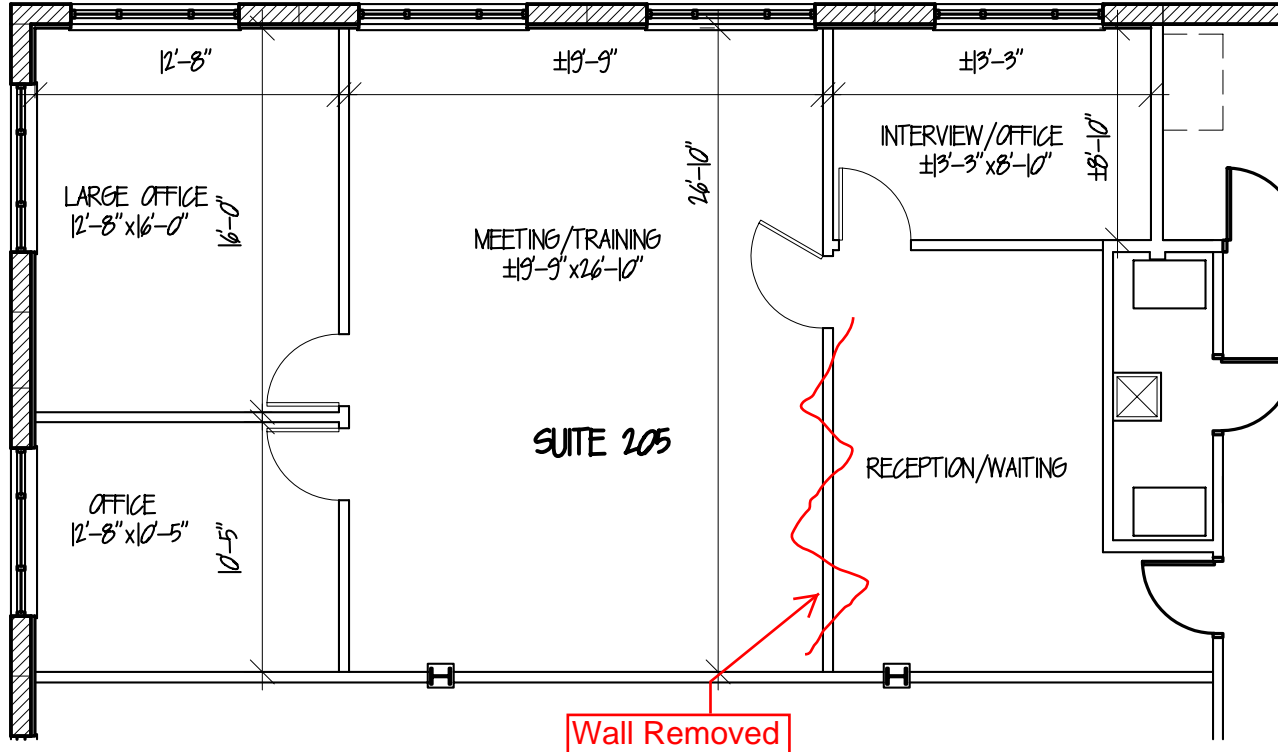
HIGH POINT I 9500 BORMET DRIVE MOKENA, IL 60448



LEGEND MAP

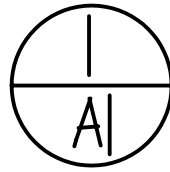


LOCATION MAP

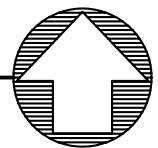


NOTE:
* ABOVE IS EXISTING BUILDOUT.

**CALL JOHN OLIVIERI AT
815-469-6400
FOR MORE INFORMATION**



FLOOR PLAN - SUITE 205



NTS.
1,554 SF OF RENTABLE SPACE, WITH
1,350 SF BEING USABLE OFFICE SPACE