

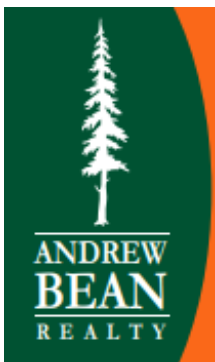
FOR LEASE

9299 SE 64th Ave, Portland, Clackamas County, 97206

NO MULTNOMAH COUNTY TAXES!

**FREESTANDING BUILDING WITH
GREAT STREET EXPOSURE!**

- +/-7,594 Sq. Ft. Shell of which +/-750 Sq. Ft. is Office
- Two Grade-Level Loading Doors (14' High X 14' Wide)
 - Loading Dock with Access for 53' Trailer
 - 16'-18' Foot Ceilings in Warehouse
 - Over 18,000 Vehicles Per Day Drive By!
 - CALL FOR RATES



Andrew Bean, SIOR

503-819-5381

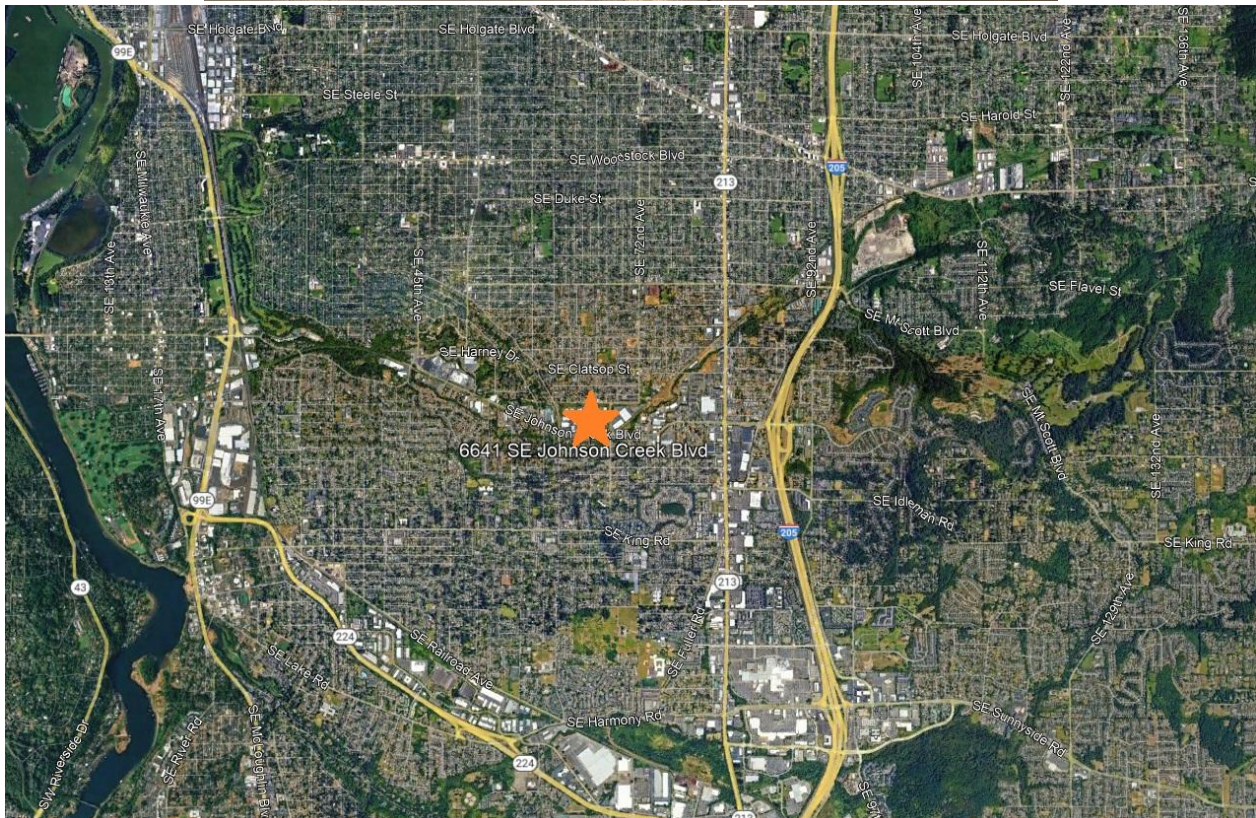
andrew@andrewbeanrealty.com

PO Box 10104
Portland, Oregon 97296

This information has been obtained by others and deemed to be reliable. However, a prospective purchaser or lessee is expected to verify all information to their own satisfaction.

FOR LEASE

9299 SE 64th Ave, Portland, Clackamas County, 97206



Andrew Bean, SIOR

503-819-5381

andrew@andrewbeanrealty.com

This information has been obtained by others and deemed to be reliable. However, a prospective purchaser or lessee is expected to verify all information to their own satisfaction.