

INDUSTRIAL/FLEX SPACE FOR LEASE



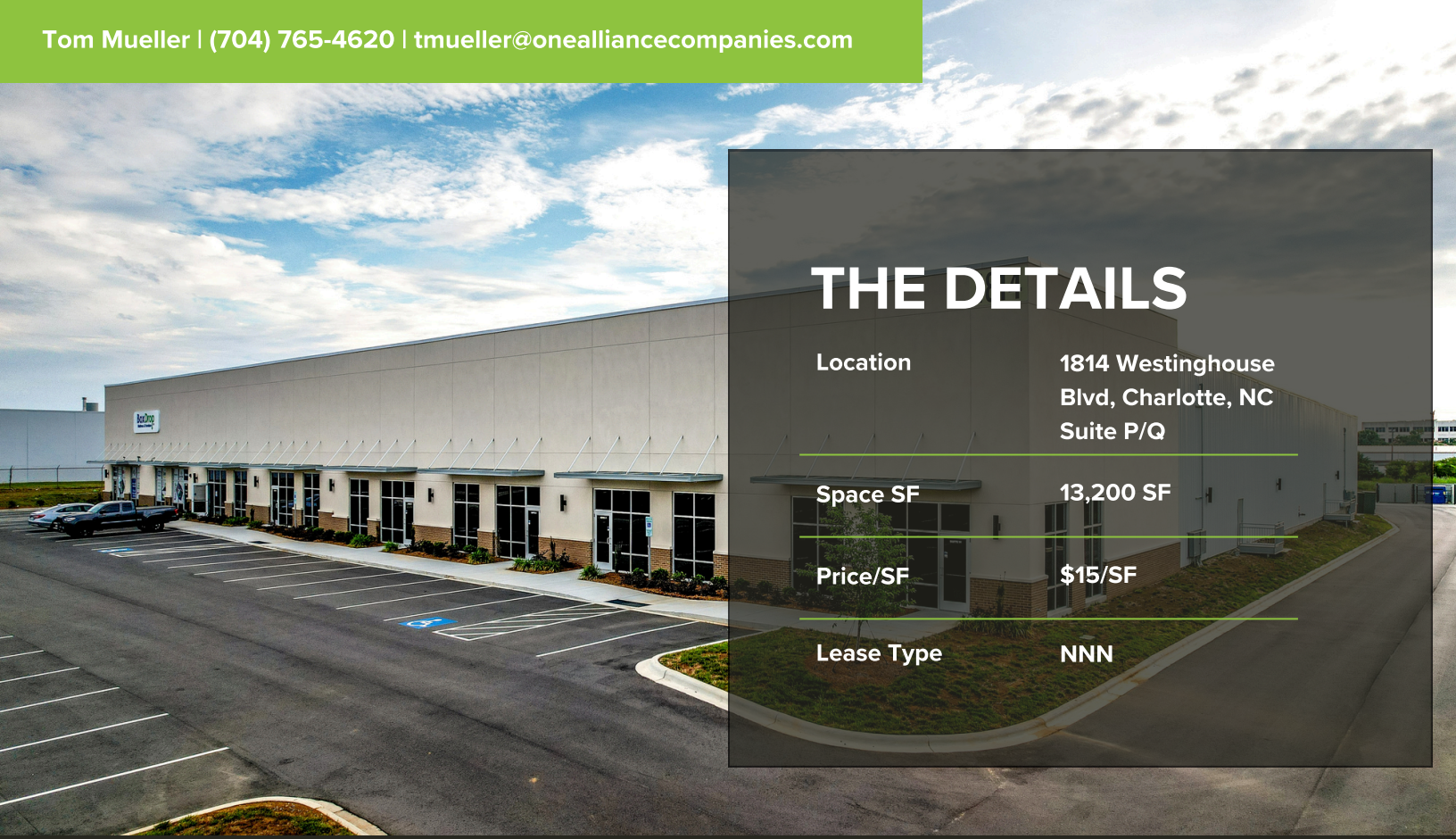
Tom Mueller | (704) 765-4620 | tmueller@onealliancecompanies.com

ABOUT THE SPACE

13,200 SF INDUSTRIAL/FLEX FOR LEASE

- Class A industrial/flex property in Charlotte's top industrial corridor
- Prime location between I-77 & I-485
- Close to Charlotte Douglas International Airport
- Highly sought after space, location, and product
- Clear-span; Cat 5E cabling
- Two handicap compliant restrooms
- Kitchenette; Mop sink; Area of rescue
- Corner location with lots of glass for showroom area
- Private office
- Panel H1 -277/480 V service; Panel A2-Stepped down to 120/208





THE DETAILS

Location	1814 Westinghouse Blvd, Charlotte, NC Suite P/Q
Space SF	13,200 SF
Price/SF	\$15/SF
Lease Type	NNN

PROPERTY FEATURES

Year Built 2019

Zoning ML-2

Location Class A



CLEAR HEIGHT
24'



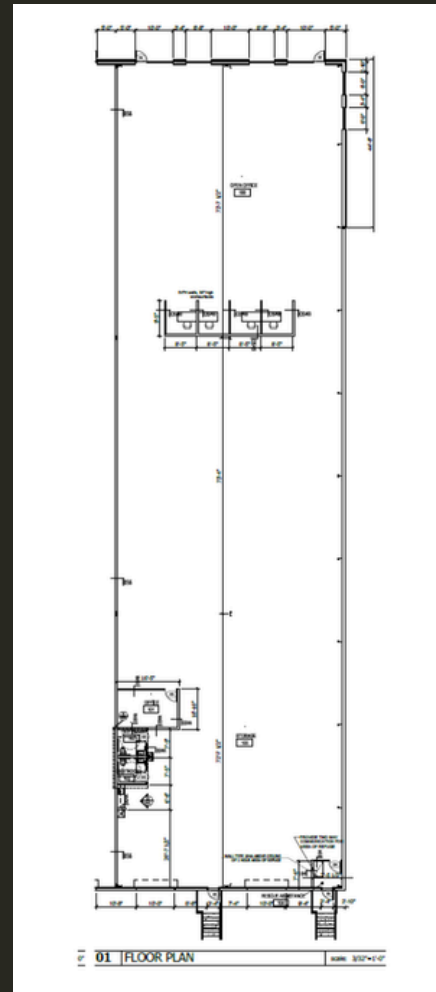
TRUCK COURT
105' Depth

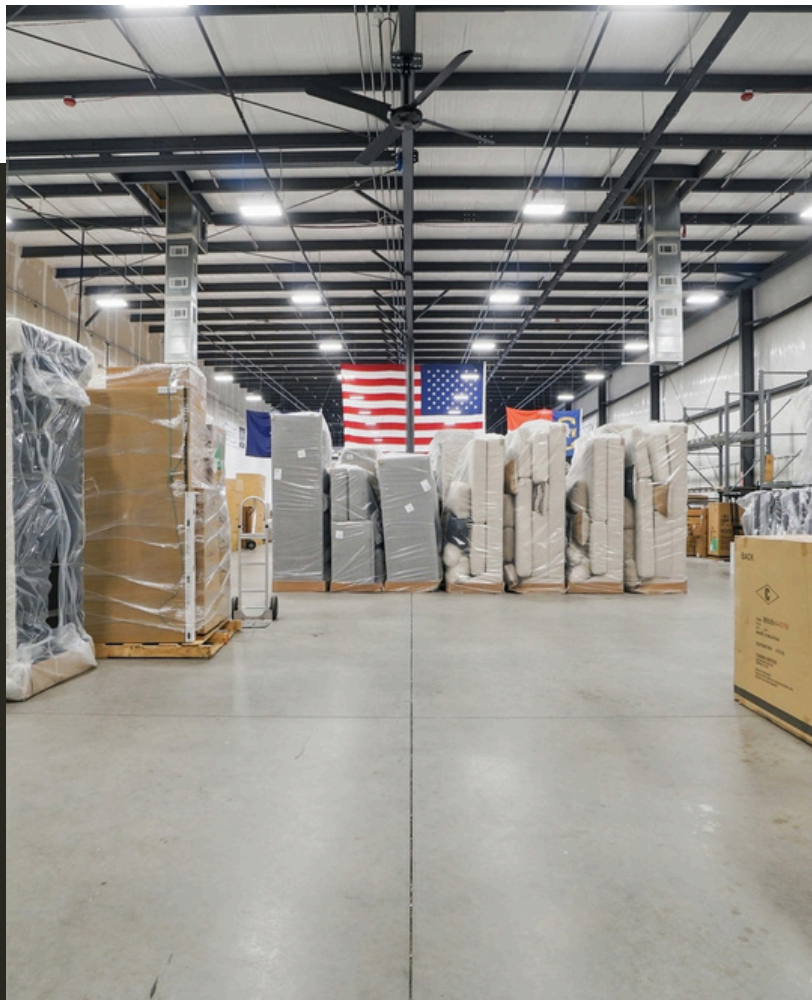
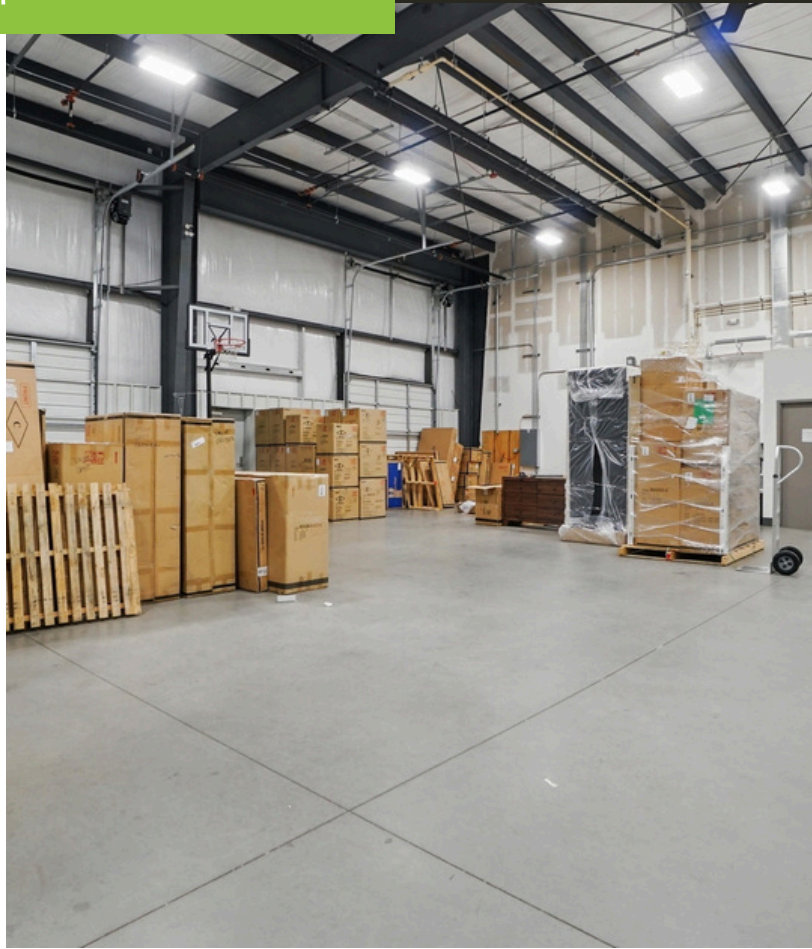


DOCK DOORS
2 - 10x10



FIRE SUPPRESSIONS
Sprinkled







CHARLOTTE, NC

Charlotte is the largest city in North Carolina, with a population of over 890,000 and a metro area exceeding 2.7 million people. It's often called the "Queen City," named in honor of Queen Charlotte of Mecklenburg-Strelitz.

The city is a major financial center, ranking second only to New York City in banking assets. It's home to the headquarters of Bank of America and a major East Coast hub for Wells Fargo, making finance a key part of its identity.

Charlotte is also a hub for NASCAR, featuring the Charlotte Motor Speedway and the NASCAR Hall of Fame. Sports fans can cheer for the Carolina Panthers (NFL), Charlotte Hornets (NBA), and Charlotte FC (MLS), all based in the city.

Education is a big part of Charlotte's landscape, with institutions like the University of North Carolina at Charlotte (UNCC) and Johnson & Wales University offering a variety of programs. Charlotte Douglas International Airport is one of the busiest airports in the U.S., connecting the city to destinations around the world.

Nature lovers will enjoy Charlotte's many parks and outdoor spaces, such as Freedom Park and the U.S. National Whitewater Center. Culturally, the city is home to attractions like the Mint Museum, Discovery Place, and the Levine Museum of the New South.

Uptown Charlotte, the city's central business and entertainment district, is known for its modern skyline, diverse restaurants, and lively arts scene. The city is also served by public transportation options like the LYNX Light Rail and the Charlotte Area Transit System (CATS), making it easy to get around.

Charlotte blends Southern charm with modern innovation, making it a dynamic place to live and visit. From food festivals and craft breweries to tech startups and thriving neighborhoods, the city offers a little something for everyone. Its warm climate, growing job market, and welcoming community continue to attract newcomers from all over the country.

