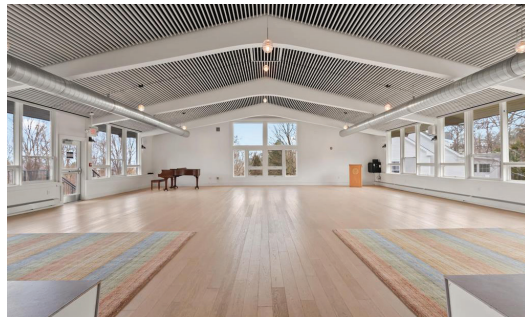




**A Landmark Campus in the
Heart of the White Mountains...
Available for the First Time
in Over a Century**

WHITE MOUNTAIN SCHOOL
371 West Farm Road, Bethlehem NH 03574



Offered at \$3,990,000 • MLS# 5036913

**Historic 112-acre campus with exceptional infrastructure
and redevelopment potential**

Featuring over 100,000 SF across 15 institutional-grade buildings, including dormitories, science labs, fine arts studios, and a fitness facility with a 40' climbing wall. Modern infrastructure includes town water & sewer, solar arrays, and geothermal systems—ideal for visionary redevelopment.

SCAN TO LEARN MORE



www.BadgerPeabodySmith.com



Property Highlights:

112+ Acres Total - 37 acres developed campus + 75 acres of forest, trails & wildlife

Public Water & Sewer (Bethlehem & Littleton)

Solar & Geothermal Systems + 45,000-gallon water reservoir, and underground utilities

Campus-style layout with paved internal roads, ample parking, outdoor amphitheater & gardens

Multiple residential options: Dormitories, faculty apartments, duplexes, and the headmaster's home

Fully Equipped Commercial Kitchen & Dining Hall

Science Center with labs, classrooms & solar array

Chapel, Arts Center (dance, music, visual arts, theater)

Full Fitness Center with gym, indoor track, and 40' climbing wall

Easy Access: Just 1.5 miles off I-93 and minutes from downtown Littleton, with proximity to area hospitals, shopping, skiing, and regional airports

Development Potential:

Ideal for:

- Charter or private school
- Outdoor leadership or conservation center
- Retreat, training campus, or wellness facility
- Mixed-use residential/retail village
- Seasonal or workforce housing

Listed by:



Mary Doherty, REALTOR®
Commercial Broker

Cell (603)767-7507
Office (603)823-5700
MaryD@BadgerPeabodySmith.com

Co-Listed by:



Fran Matott, REALTOR®
Residential Sales

Cell (603)486-4986
Office (603)444-1294
FranM@BadgerPeabodySmith.com