



27082 Mueller Place

Sioux Falls, SD 57108

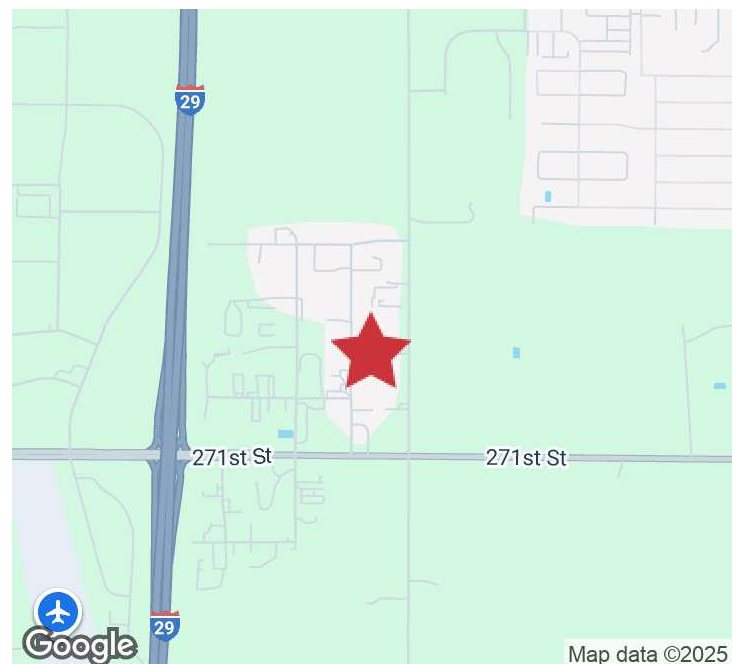
Lease Rate	\$7.75/SF NNN
Vacant SF	7,896 SF
Lot Size	1.29 AC (56,192 SF)

PROPERTY HIGHLIGHTS

- 14' sidewalls
- 720 SQFT office/mezzanine
- Radiant Heat
- 2 Floor Drains
- Convenient access to I-29
- Located in high growth industrial area with strong neighboring businesses
- 2 exterior drive in doors (west side 12x12, north side 12x14), 1 interior demising door (12x14)
- Office is heated/cooled with bathroom
- Zoning: I-1
- Non-exclusive listing

LOCATION DESCRIPTION

Area Neighbors: Taco John's, Milliron Granite & Quartz, Casey's, Starbucks, Glass Doctor of Sioux Falls, Car Swap, Thornton Flooring, Marlin's Family Restaurant



SAM FAWCETT
Broker Associate
sfawcett@naisiouxfalls.com
605.321.2191

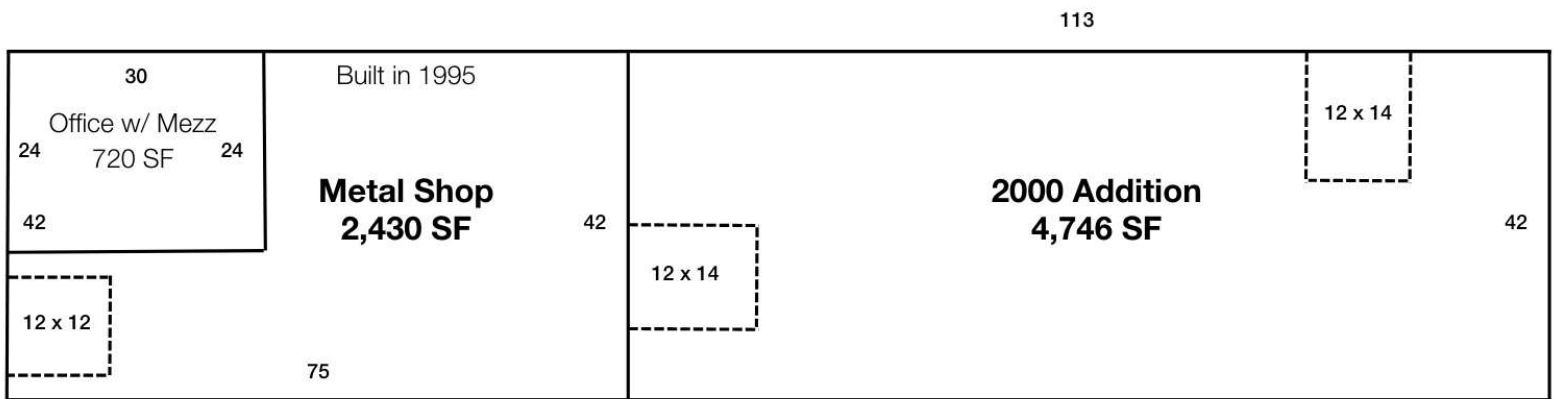
2500 W. 49th St. Suite 100
Sioux Falls, SD 57105
605.357.7100
naisiouxfalls.com

FLOOR PLANS

27082 MUELLER PLACE
Sioux Falls, SD 57108

FOR LEASE
Industrial Property

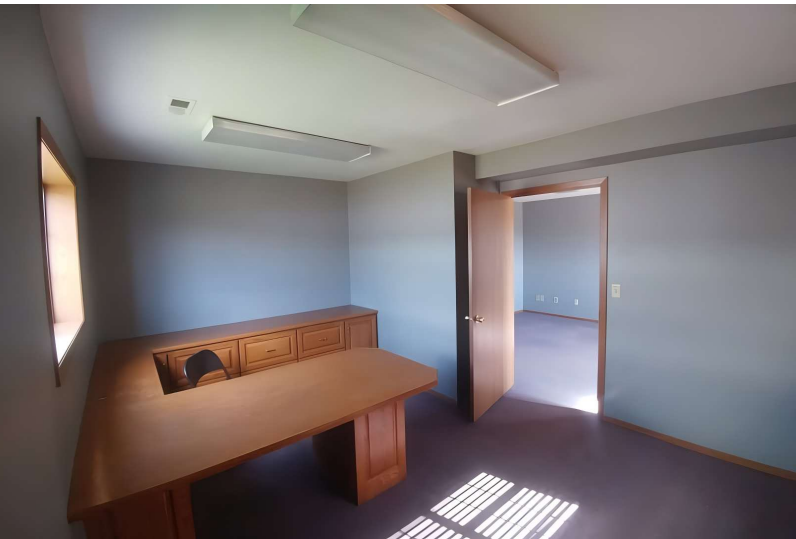
MUELLER PLACE



PHOTOS

27082 MUELLER PLACE
Sioux Falls, SD 57108

FOR LEASE
Industrial Property



PARCEL

27082 MUELLER PLACE
Sioux Falls, SD 57108

FOR LEASE

Industrial Property



LOCATION MAP

27082 MUELLER PLACE
Sioux Falls, SD 57108

FOR LEASE
Industrial Property



Map data ©2025 Imagery ©2025 Airbus, Maxar Technologies, USDA/FPAC/GEO