

Rainier Tower

1301 5th Avenue
Seattle, WA 98101

FOR LEASING INFORMATION, PLEASE CONTACT:

BRIAN HAYDEN
206.626.0891
brian@flinnferguson.com

YVIE CHERE
206.626.0898
yvie@flinnferguson.com

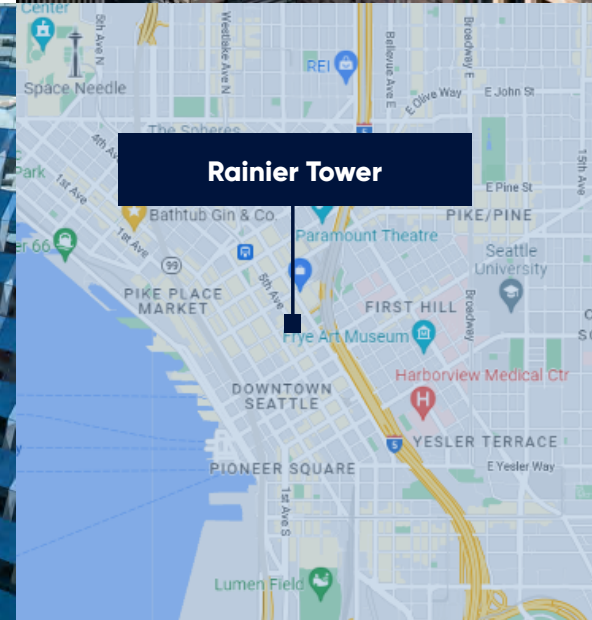
Plug & Play Sublease

- » Available September 1, 2026:
- » Largest Contiguous Sublease Available:
 - 25,465 RSF
- » Largest Contiguous Sublease + Direct Availabilities:
 - 37,979 RSF

Space Breakdown by Floor:

Floor	RSF	Notes
31	10,883	<i>For Sublease</i> <i>(divisible to 4,576 RSF & 6,307 RSF)</i>
29	6,725	<i>For Sublease</i>
29	12,514	<i>Direct (vacant)</i>
28	18,740	<i>For Sublease</i>
28 - 29	37,979	Total Contiguous for Sublease + Direct

} Full floor available
19,239 RSF



Rainier Tower

Available September 1, 2026

Floor 31

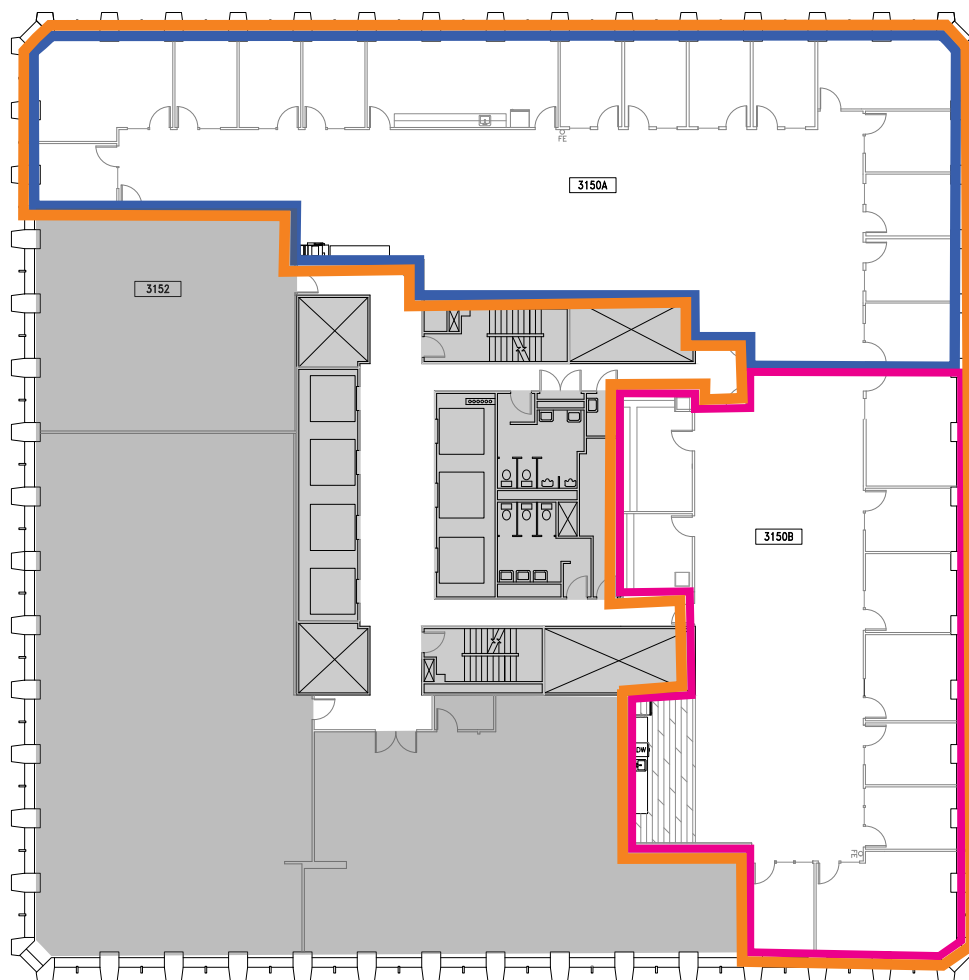
- Suite 3150A: 6,307 RSF
- Suite 3150B: 4,576 RSF
- Suites 3150A & B: 10,883

Plug & Play, Furniture is available

FOR LEASING INFORMATION, PLEASE CONTACT:

BRIAN HAYDEN
206.626.0891
brian@flinnferguson.com

YVIE CHERE
206.626.0898
yvie@flinnferguson.com



1301 5th Avenue
Seattle, WA 98101



[Click here for the Virtual Tour!](#)

Rainier Tower

Available September 1, 2026

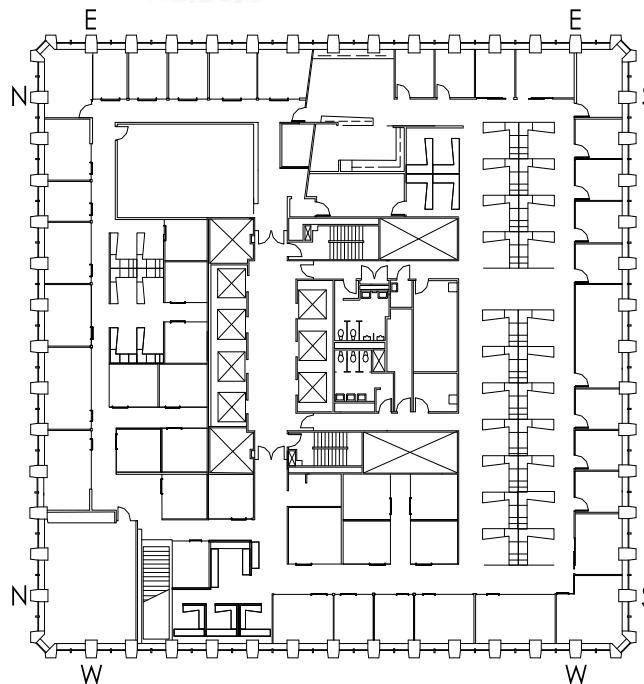
Floors 28 & 29

37,979 RSF Total Contiguous Sublease + Direct (2 full floors)

1301 5th Avenue
Seattle, WA 98101



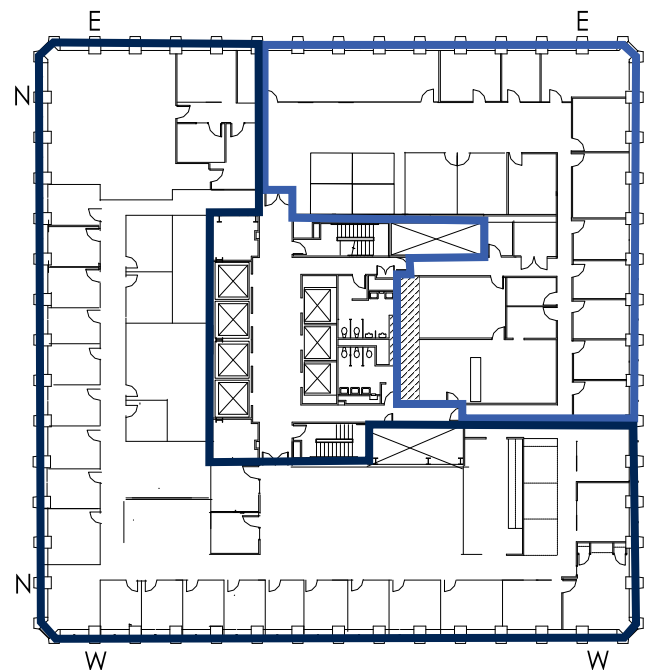
Click here for the
Virtual Tour!



Floor 28



Click here for the
Virtual Tour!



Floor 29

FOR LEASING INFORMATION, PLEASE CONTACT:

BRIAN HAYDEN

206.626.0891

brian@flinnferguson.com

YVIE CHERE

206.626.0898

yvie@flinnferguson.com

● **6,725 RSF for Sublease**

● **12,514 RSF Direct (vacant)**

19,239 RSF Total Contiguous for

Sublease + Direct (full floor)