



15894 HIGHWAY 17  
P.O. BOX 56  
HAMPSTEAD, NC 28443  
910/270-5100 FAX: 910/270-5110

# FOR LEASE HAMPSTEAD BAY GARAGE



**16646 HIGHWAY 17  
HAMPSTEAD, NORTH CAROLINA**

**This prominent +/- 3,428 square foot three bay automotive garage is centrally located in the fast growing Hampstead business district. With exceptional highway visibility and large fenced storage yard, this facility is ideal for a wide variety of commercial users. Available June, 2026.**

**CALL  
HENRY NADEAU  
(910) 524-7184**



**Commercial & Investment Real Estate Specialists**

email: [info@creativecommercial.biz](mailto:info@creativecommercial.biz)  
[www.creativecommercial.biz](http://www.creativecommercial.biz)



# 16646 HIGHWAY 17

## THE FACILITY

- +/- 3,428 Square Feet Total
  - +/- 1,200 SF Retail Showroom
  - +/- 1,560 SF Bay Garage
  - +/- 592 SF Storage Room
- Two Restrooms
- Three Overhead Doors (10 x 10)
- LED Lighting In Warehouse

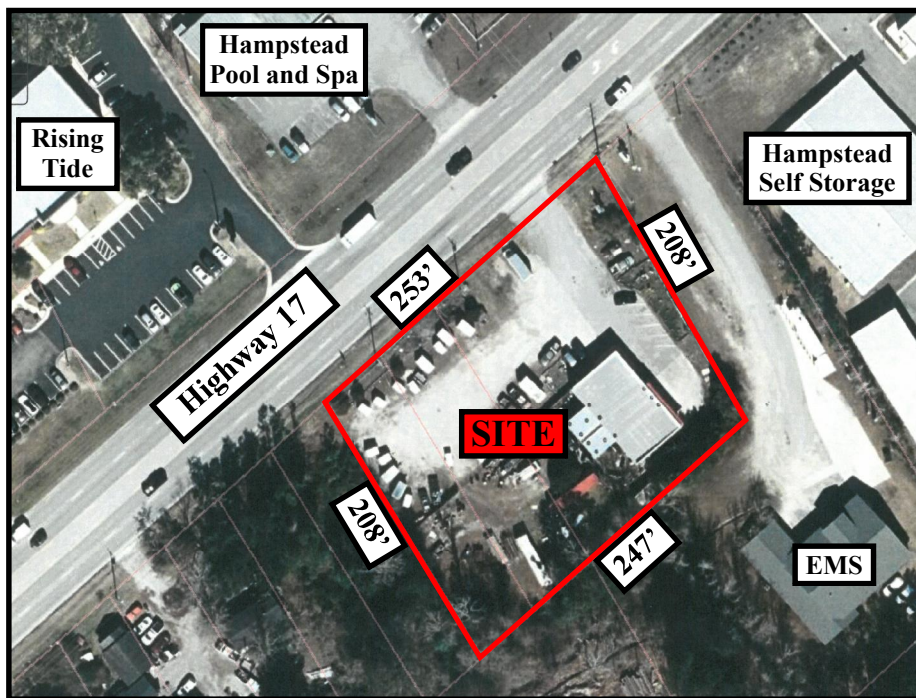
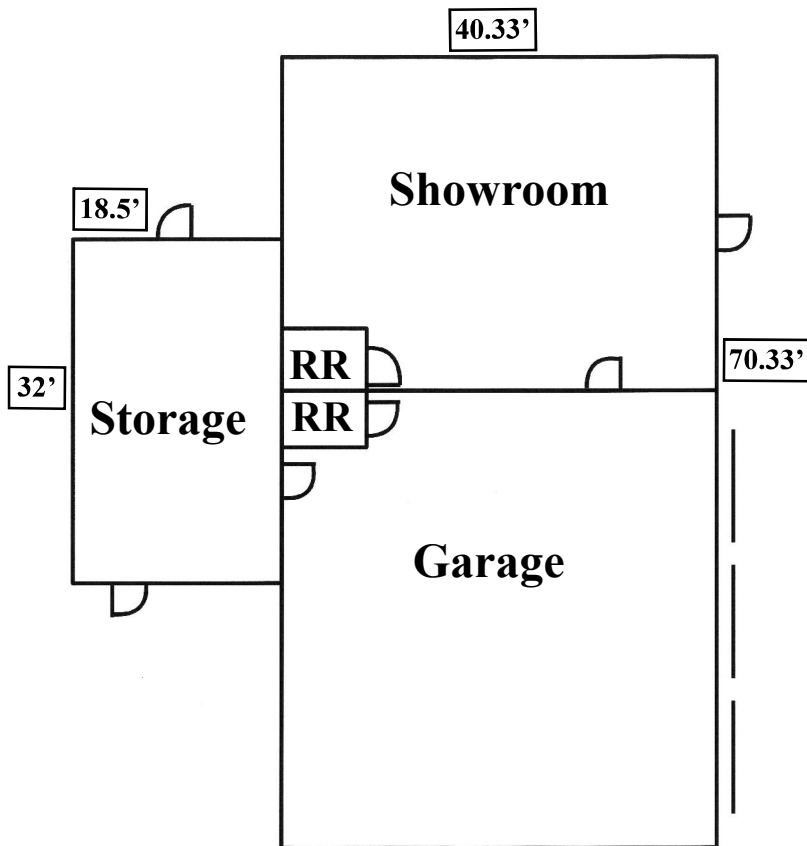
## THE LOT

- +/- 1.19 Acres (Includes Fenced Yard)
- +/- 253 Feet Of Highway 17 Frontage
- Marquee Sign
- Municipal Water
- On-Site Septic
- Extensively Rocked And Fenced

## THE OFFERING

**\$10,000/Month**

**Includes Property Taxes And  
Building Insurance  
Available June, 2026**



**CREATIVE COMMERCIAL PROPERTIES, INC.**

**CALL**

**HENRY NADEAU**

**(910) 524-7184**

Email: [henry@creativecommercial.biz](mailto:henry@creativecommercial.biz)

[www.creativecommercial.biz](http://www.creativecommercial.biz)



Creative Commercial Properties, Inc. reasonably believes the information in this brochure is fairly and accurately stated. However, any prospective purchaser is urged to independently confirm its accuracy and completeness.