

For Lease

Lake Elsinore Outlets

17600 Collier Avenue, Lake Elsinore, CA 92530



Property Highlights

- Freeway visible outlet/retail center
- Approximately one full mile of freeway frontage on I-15
- National Retailers include: Gap, Bath & Body Works, Daniel's Jewelers, PacSun, Nike Factory Store, Bass, Guess Factory Store, Famous Footwear, Carter's, Vans, Levi's Outlet, Billabong, Sketchers, Dairy Queen, VF Outlet, Fallas Paredes, and many more!
- Many various sized suites available, from small shop to anchors
- Traffic Counts along I-15 approximately 110,000 ADT
- Pylon and monument signage
- Undeveloped pads available, great for restaurant, hotel, entertainment, medical, office and other non-traditional uses

Demographic Highlights

2017 Estimates	15-Mile	30-Mile	50-Mile
Population	636,452	4,303,520	10,617,010
Avg. HH Income	\$89,635	\$96,247	\$91,624

For more information, contact:
 Terry Bortnick | President
 T) 888-301-1888 x 2
 E) terry@argentcre.com
 DRE License #01005344

Thomas Tway | Managing Director
 T) 888-301-1888 x 4
 E) thomas@argentcre.com
 DRE License #01427848



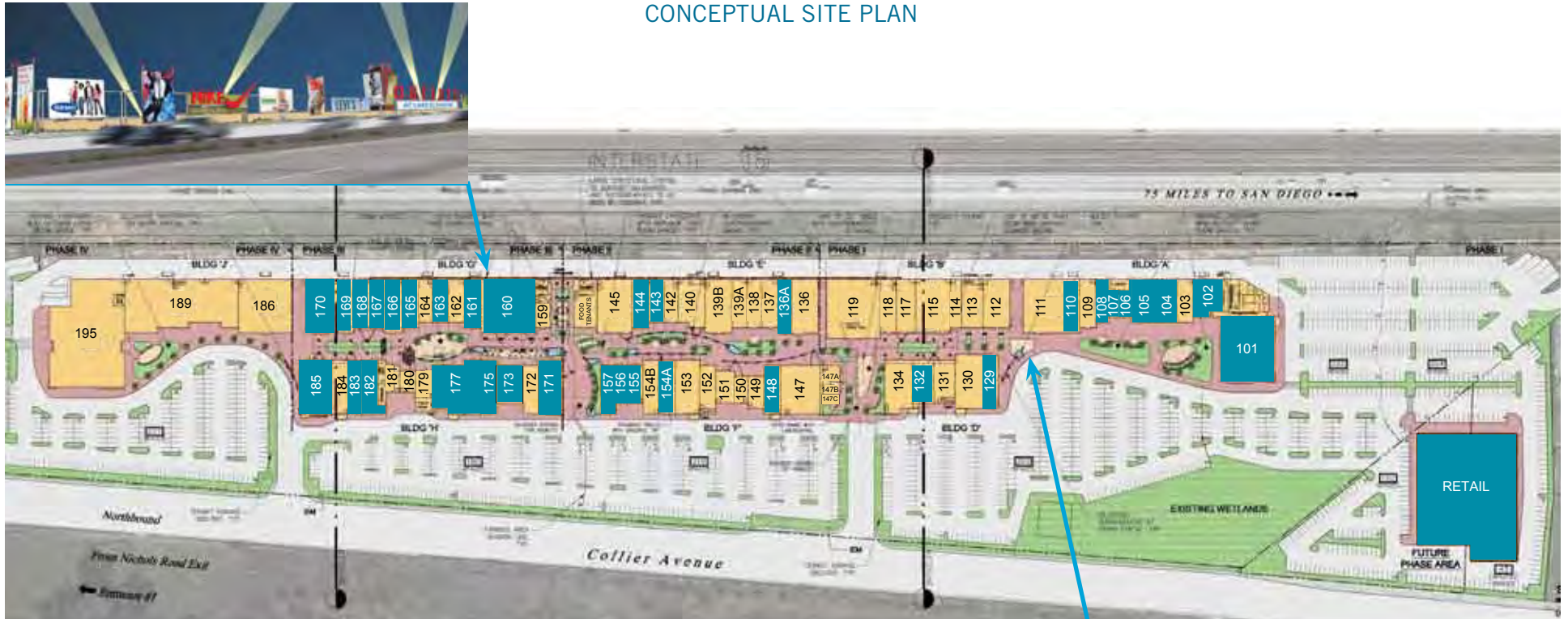
Note: While the information contained herein is from sources deemed reliable and is believed to be correct, it is not in any way warranted or guaranteed by Argent Retail Advisors.

For Lease

Lake Elsinore Outlets

17600 Collier Avenue, Lake Elsinore, CA 92530

CONCEPTUAL SITE PLAN



■ Available



For more information, contact:
 Terry Bortnick | President
 T) 888-301-1888 x 2
 E) terry@argentcre.com
 DRE License #01005344

Thomas Tway | Managing Director
 T) 888-301-1888 x 4
 E) thomas@argentcre.com
 DRE License #01427848



Note: While the information contained herein is from sources deemed reliable and is believed to be correct, it is not in any way warranted or guaranteed by Argent Retail Advisors.

For Lease

Lake Elsinore Outlets

17600 Collier Avenue, Lake Elsinore, CA 92530

Suite	Tenant Name	SF
101	AVAILABLE	12,033
102	AVAILABLE	3,617
103	Storage	2,403
104	AVAILABLE	3,001
105	AVAILABLE	25-80*
106	AVAILABLE	1,366
107	AVAILABLE	1,116
108	AVAILABLE	1,803
109	Bath & Body Works	2,703
110	AVAILABLE	4,505
111	Puma	6,000
112	L'eggs Hanes Bali / Playtex Outlet	4,506
113	O'Neill	3,264
114	Daniel's Jewelers	1,800
115	Rue 21	6,491
117	PacSun	3,501
118	Hot Topic	3,001
119	NIKE Factory Store	11,007
129	AVAILABLE	2,993
130	Bass	8,013
131	Amani Boutique	2,845
132	AVAILABLE	3,303
134	Van Heusen	5,010
135	Styles 4 Less	3,501
136	GUESS Factory Store	5,020
136A	AVAILABLE	2,450
137/138	Famous Footwear Outlet	5,175
139A	Gymboree Outlet	2,476
139B	Carter's Childrenswear	5,007

Suite	Tenant Name	SF
140	Vans	4,064
142	Perfumania	2,001
143	AVAILABLE	2,401
144	AVAILABLE	2,703
145	The Children's Place	6,507
146	Payless Shoesource	2,779
147	Levi's Outlet Store	6,587
147A	Pints & Quarts	1,069
147B	Pints & Quarts	704
147C	Pints & Quarts	1,125
148	AVAILABLE	2,709
149	Element	1,804
150	Lids for Less	1,251
151	Limited Edition Sports Memorabilia	2,103
152	Billabong	2,404
153	Corningware Corelle Revere	4,504
154A	AVAILABLE	3,001
154B	Sketchers	3,009
155	AVAILABLE	2,101
156	AVAILABLE	1,400
157	AVAILABLE	2,437
158	AVAILABLE	4,504
159	Dairy Queen	1,443
160	AVAILABLE	10,008
161	AVAILABLE	2,703
162	SAS Factory Shoe Store	2,401
163	AVAILABLE	1,862
164	A&Y Leather & Accessories	2,005

Suite	Tenant Name	SF
165	AVAILABLE	2,703
166	AVAILABLE	3,506
167	AVAILABLE	2,251
168	AVAILABLE	2,701
169	AVAILABLE	3,003
170	AVAILABLE	6,001
171	AVAILABLE	4,504
172	Pacific Shores Boardshop	4,537
173	AVAILABLE	1,400
175	AVAILABLE	3,010
177	AVAILABLE	8,116
179	Sunglass Hut	1,503
180	\$4.99 Cuts	1,201
181	Arbi Jewelers	1,258
182	AVAILABLE	3,274
182A	Wetzel's Pretzels	665
183	AVAILABLE	2,501
184	Casual Male XL	3,001
185	AVAILABLE	6,001
186	GAP Outlet	10,003
189	VF Outlet	18,939
195	Fallas	25,589

*Small short term spaces available. Call for more details.

For more information, contact:
 Terry Bortnick | President
 T) 888-301-1888 x 2
 E) terry@argentcre.com
 DRE License #01005344

Thomas Tway | Managing Director
 T) 888-301-1888 x 4
 E) thomas@argentcre.com
 DRE License #01427848



Note: While the information contained herein is from sources deemed reliable and is believed to be correct, it is not in any way warranted or guaranteed by Argent Retail Advisors.