

Eastlake Centre

6201 E Hillsborough Ave, Tampa, FL 33610



EQUITY
INVESTMENT
SERVICES

PROPERTY SUMMARY



PROPERTY HIGHLIGHTS

- 4,242 - 8,787 SF available
- Visibility on Hillsborough Ave with 45,000 cars per day
- Multiple access points including a lighted intersection
- Less than a mile from Seminal Hard Rock Hotel and Casino
- One mile from I-4 with easy access to I-75, I-275 and US Hwy 301
- Adjacent to NexPark, a one million SF office park with over 5,000 workers

[CLICK HERE FOR UNIT 6211 VIRTUAL TOUR](#)

[CLICK HERE FOR UNIT 6213 VIRTUAL TOUR](#)

OFFERING SUMMARY

Lease Rate:	Negotiable
Available SF:	4,242 - 8,787 SF
Lot Size:	1.56 Acres
Building Size:	13,267 SF

DEMOGRAPHICS	1 MILE	3 MILES	5 MILES
Total Households	1,377	28,783	85,163
Total Population	3,532	75,386	218,880
Average HH Income	\$63,221	\$58,558	\$70,116

Nick Barbato

954.579.2672

NBarbato@eisre.com

Ryan D'Agostino

954.336.3615

RDagostino@eisre.com



7575 Dr. Phillips Blvd, Ste 390

Orlando, FL 32819

www.eisre.com

Eastlake Centre

6201 E Hillsborough Ave, Tampa, FL 33610



EQUITY
INVESTMENT
SERVICES

SITE PLAN



Nick Barbato

954.579.2672

NBarbato@eisre.com

Ryan D'Agostino

954.336.3615

RDagostino@eisre.com



7575 Dr. Phillips Blvd, Ste 390

Orlando, FL 32819

www.eisre.com

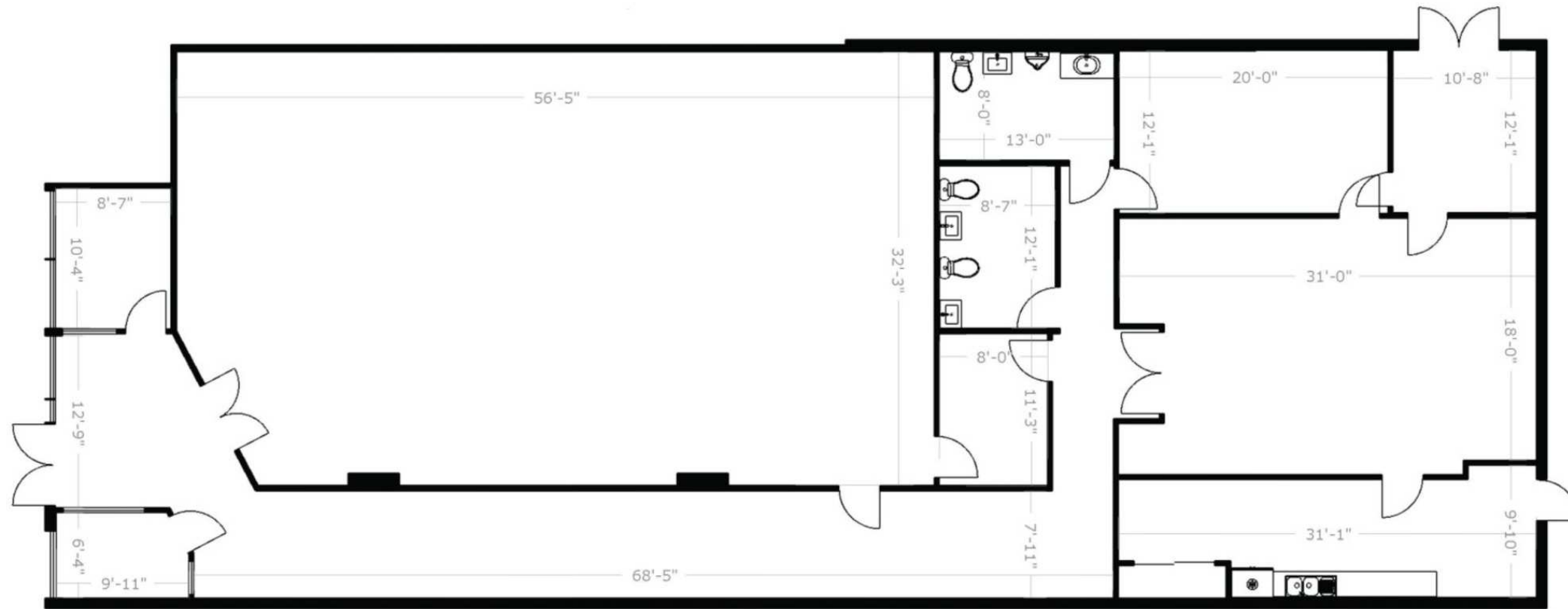
Eastlake Centre

6201 E Hillsborough Ave, Tampa, FL 33610



EQUITY
INVESTMENT
SERVICES

FLOOR PLAN - SUITE 6213



Nick Barbato

954.579.2672

NBarbato@eisre.com

Ryan D'Agostino

954.336.3615

RDAgostino@eisre.com



7575 Dr. Phillips Blvd, Ste 390

Orlando, FL 32819

www.eisre.com

Eastlake Centre

6201 E Hillsborough Ave, Tampa, FL 33610



EQUITY
INVESTMENT
SERVICES

RETAILER MAP



Nick Barbato
954.579.2672
NBarbato@eisre.com

Ryan D'Agostino
954.336.3615
RDagostino@eisre.com



7575 Dr. Phillips Blvd, Ste 390
Orlando, FL 32819
www.eisre.com

Eastlake Centre

6201 E Hillsborough Ave, Tampa, FL 33610



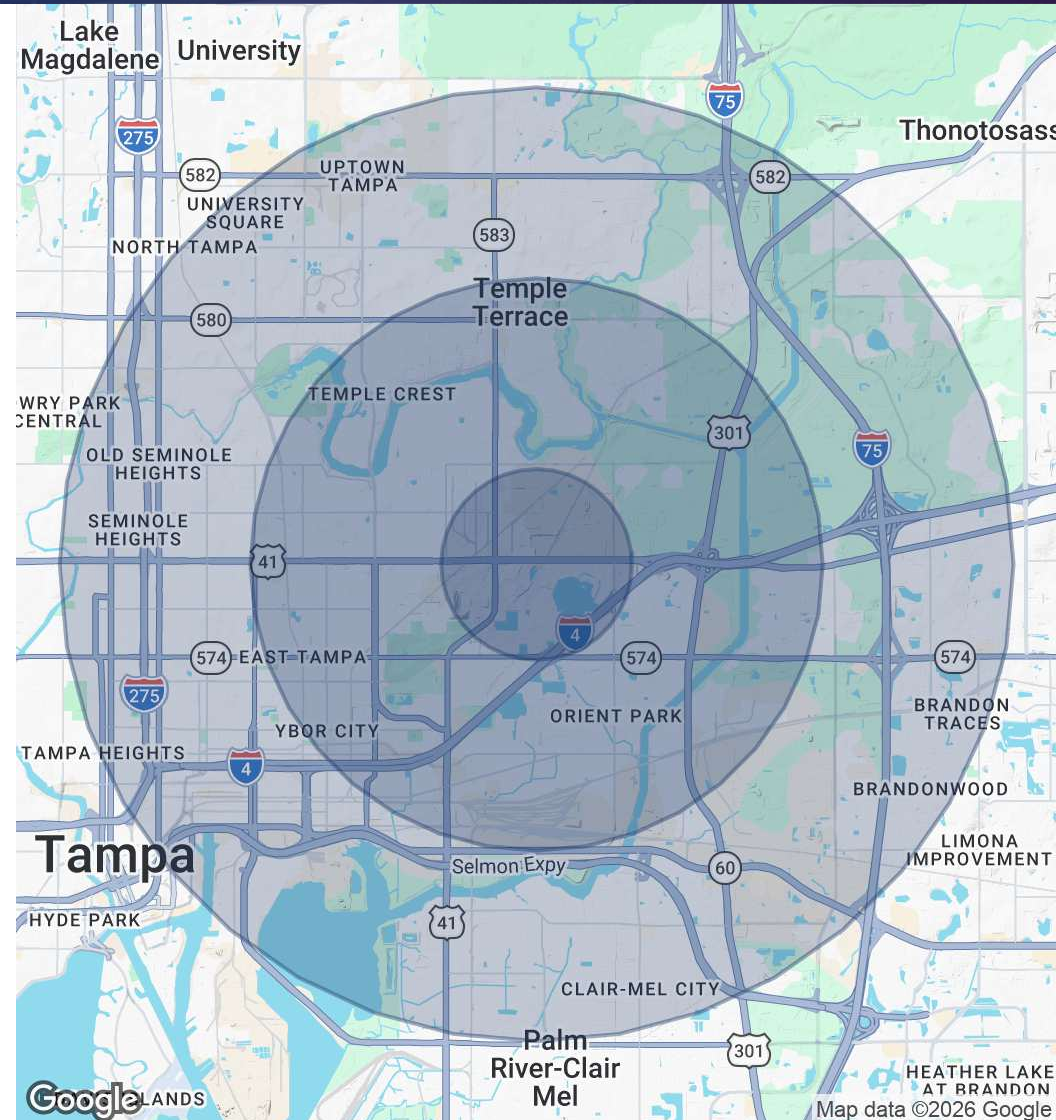
EQUITY
INVESTMENT
SERVICES

DEMOGRAPHICS MAP & REPORT

POPULATION	1 MILE	3 MILES	5 MILES
Total Population	3,532	75,386	218,880
Average Age	35.2	34.9	35.4

HOUSEHOLDS & INCOME	1 MILE	3 MILES	5 MILES
Total Households	1,377	28,783	85,163
# of Persons per HH	2.6	2.6	2.6
Average HH Income	\$63,221	\$58,558	\$70,116
Average House Value	\$241,852	\$222,810	\$263,770

AGE	1 MILE	3 MILES	5 MILES
0 - 4	218	5,112	13,321
5 - 9	319	6,164	14,986
10 - 14	287	4,819	12,914
15 - 17	116	3,012	8,491
18 - 20	157	2,942	10,617
21 - 24	224	3,674	12,385
25 - 34	463	12,630	38,927
35 - 44	423	10,106	30,710
45 - 54	416	9,307	24,520
55 - 64	398	7,475	23,643
65 - 74	222	6,588	18,182
75 - 84	266	2,657	7,908
85+	26	914	2,308



Nick Barbato
954.579.2672
NBarbato@eisre.com

Ryan D'Agostino
954.336.3615
RDagostino@eisre.com



7575 Dr. Phillips Blvd, Ste 390
Orlando, FL 32819
www.eisre.com