

20413 87th AVENUE SOUTH

KENT, WA 98031



INDUSTRIAL SUBLEASE | AVAILABLE Q3 2026

28,800 RSF (1,345 SF OFFICE)

HUGHESMARINO

BUILDING INFORMATION



BUILDING

Northwest Corporate Park

ADDRESS

20413 87th Avenue South,
Kent, WA 98031

AVAILABLE

Q3 2026

ASKING RATE

\$0.81/SF/Month NNN

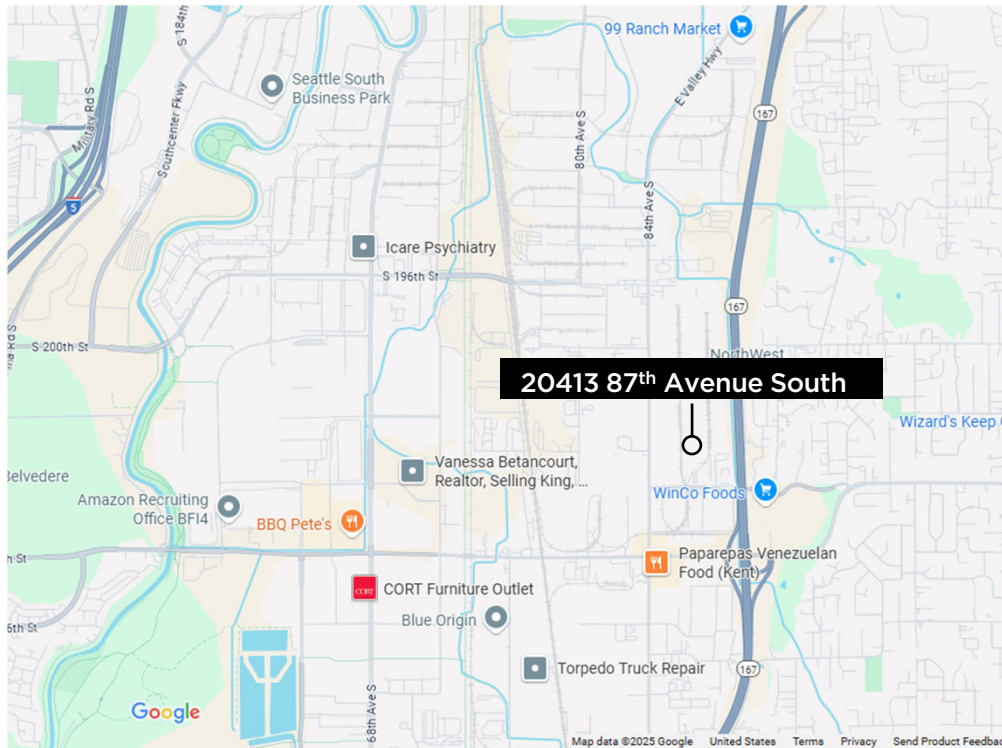
AVAILABLE THROUGH

March 31, 2028

ADDITIONAL FEATURES

- Clear Height: 30 ft
- Dock Doors: 4 (Dock High)
- Typical Column Spacing: 24' x 60'
- Rail Served

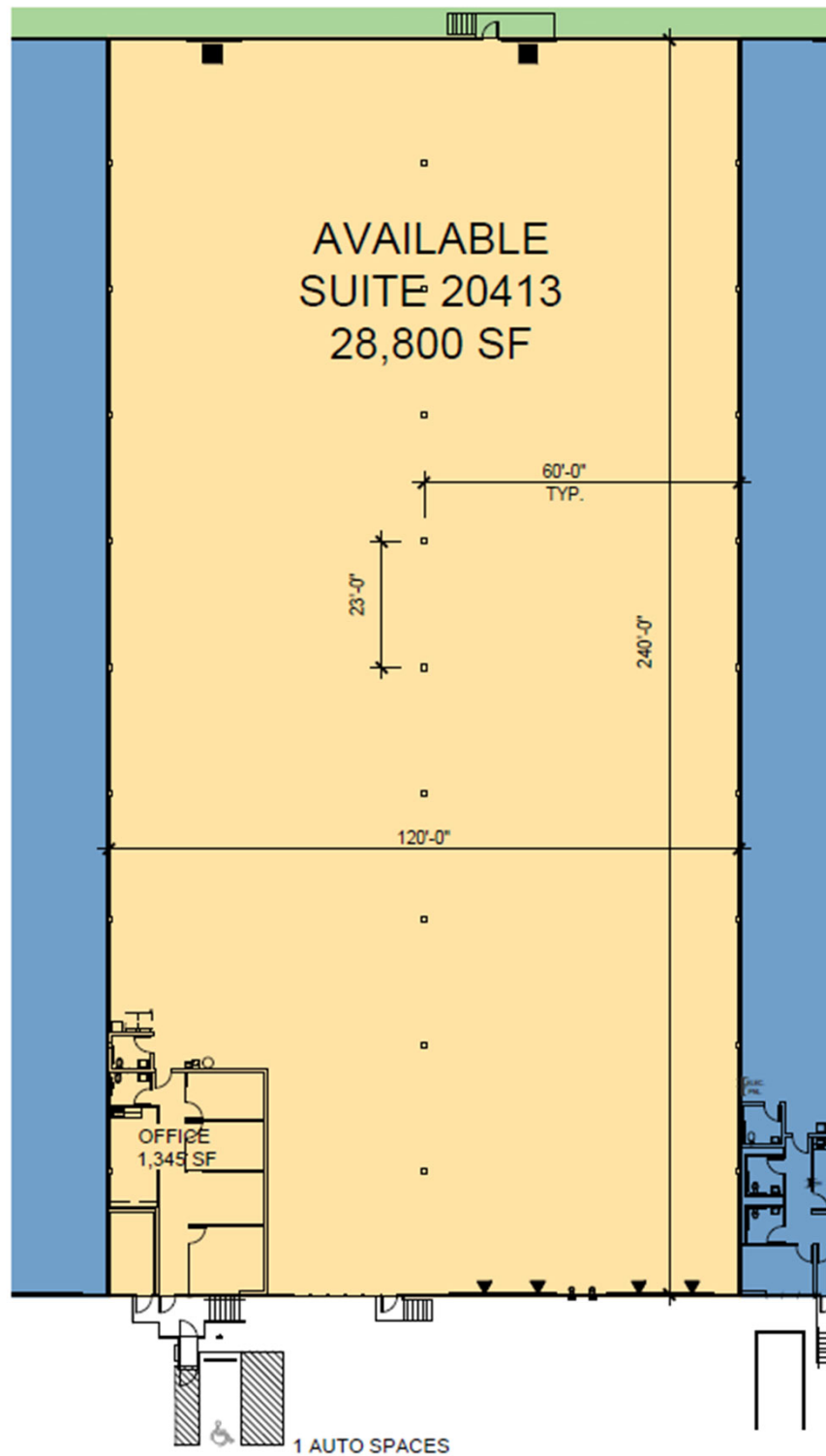
LOCATION HIGHLIGHTS



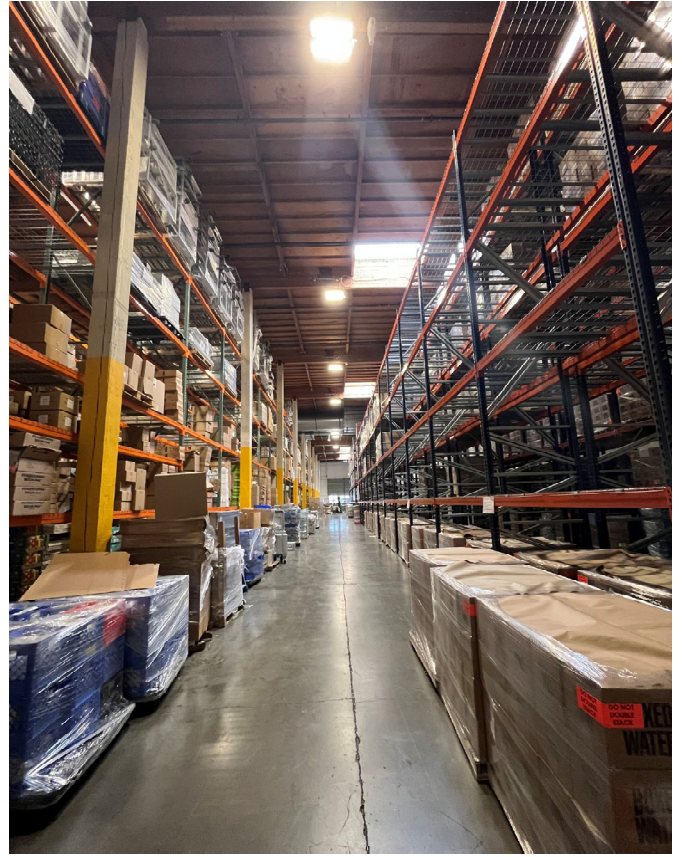
KEY HIGHLIGHTS

- Excellent access to State Route 167 and I-5
- Less than 30 Minutes to Downtown Seattle & Bellevue
- Less than 15 Minutes from Seattle-Tacoma International Airport

FLOOR PLAN



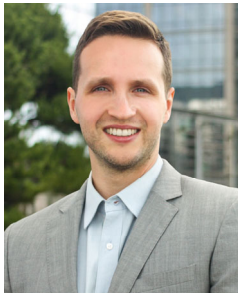
20413 87TH AVENUE SOUTH



20413 87TH AVENUE SOUTH



CONTACT INFORMATION



BRIAN WEBSTER

brian.webster@hughesmarino.com

206.624.3111

Broker Lic. #133805



DOMINIC KAIMAKIS

dominic@hughesmarino.com

206.624.3111

Broker Lic. #21023131



MIKE MCELWEE

mike.mcelwee@hughesmarino.com

214.234.9255

Broker Lic. #455633