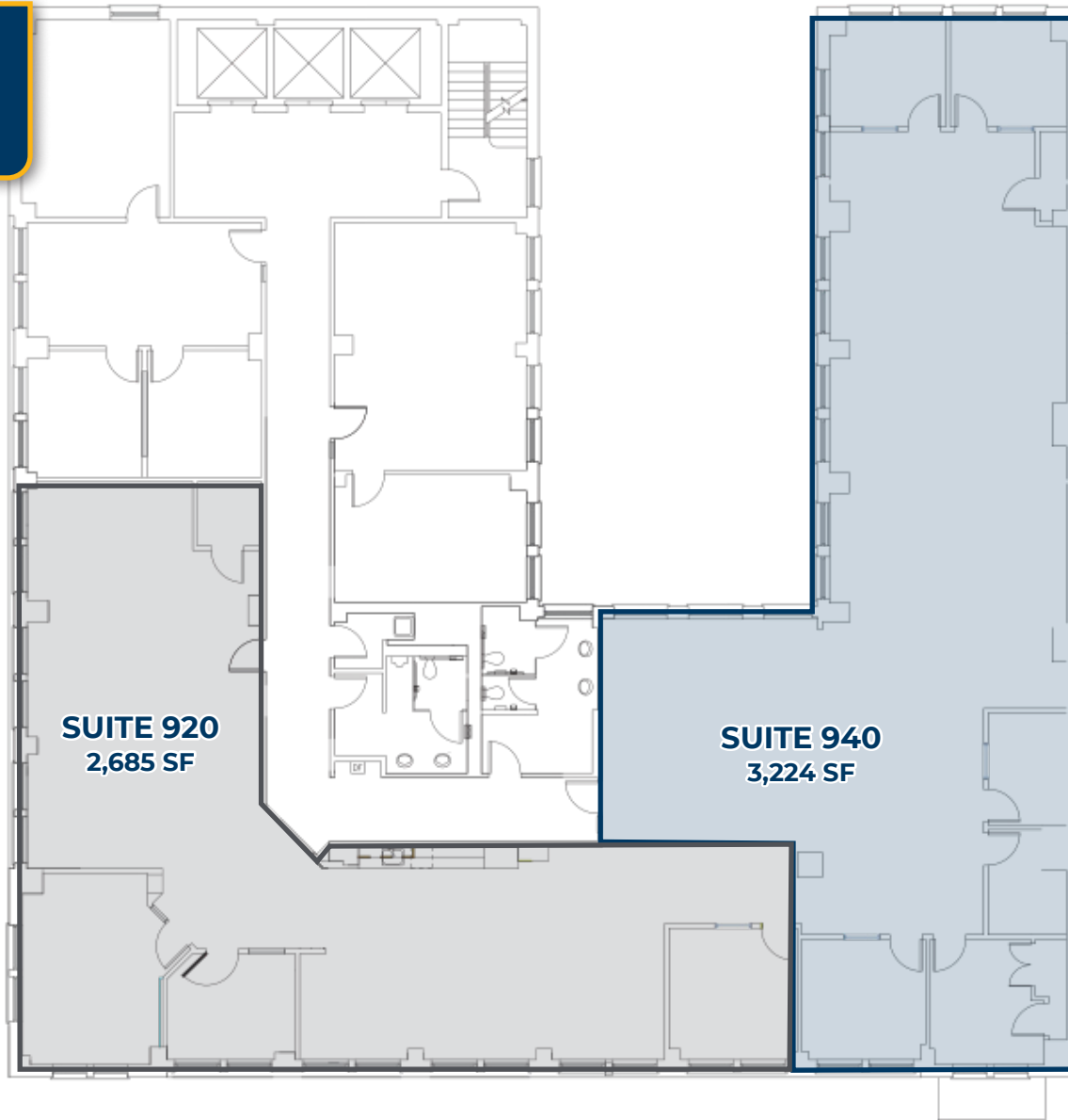




**FLOOR PLAN**



LEASE INFORMATION	
<b>Building</b>	The Cascade Building
<b>Address</b>	520 SW 6th Ave, Portland, OR 97204
<b>Floor</b>	9th
<b>Suite</b>	920, 940
<b>Total SF</b>	2,685 - 5,909 RSF Combinable for 5,909 RSF

**MCCOY DOERRIE, SIOR**  
Senior Vice President  
503-523-7751  
mccoy@capacitycommercial.com

**JEFF FALCONER, SIOR**  
Principal  
503-542-4346  
jeff@capacitycommercial.com

**GABRIEL BEHRMANN**  
Senior Associate Broker  
971-237-2458  
gabriel@capacitycommercial.com

