

# ALLIANCE INDUSTRIAL PARK

BUILD TO SUIT ±78,170 SF TO ±147,909 SF



170 & 172 ALLIANCE BLVD | WILLIAMSTON, SC

**NAI Earle Furman**  
101 E. Washington St, Ste 400  
Greenville, SC 29601  
(O) 864.232.9040  
[www.naiearlefurman.com](http://www.naiearlefurman.com)

Grice Hunt, SIOR  
Shareholder  
864.346.7611  
[grice@naief.com](mailto:grice@naief.com)

Clay Williams, SIOR  
Shareholder  
864.706.7622  
[clay@naief.com](mailto:clay@naief.com)

Will Coker  
Broker  
864.680.0526  
[wccoker@naief.com](mailto:wccoker@naief.com)

The information contained herein is deemed reliable but is not guaranteed. NAI Earle Furman makes no warranties or representations regarding the accuracy, completeness, or reliability of the information. All parties are encouraged to independently verify all details, including but not limited to property condition, terms, and financial projections. Prices, terms, and availability are subject to change without notice.

# PARK CONCEPTUAL SITE PLAN

Alliance Industrial Park | Williamston, SC



# BLDG 01 OVERVIEW

Alliance Industrial Park | Williamston, SC

## 170 ALLIANCE BLVD



±147,909 Total SF

Suites available from ±22,000 SF

Spec office ±2,220 SF

Concrete tilt wall construction

210' Building depth | Rear load configuration

32' Clear height

54' x 50' Column spacing | 60' Speed bay

Motion activated LED show lighting (1 per bay)

ESFR Sprinkler system | 100% Sprinkled

Power: 1,200 Amps, 3 -Phase, 480 V

Clerestory windows throughout

30 Dock high doors (total)

10 Doors w/40,000 LB mechanical levelers

2 Drive-in doors

185' Truck court depth (including trailer stalls)

31 Trailer parking spaces & 150 car parking spaces

### UTILITIES

WATER | Big Creek Water District

SEWER | Anderson County

NATURAL GAS | Fort Hill Natural Gas

ELECTRIC | Blue Ridge Electric Cooperative  
(up to 10 MW power available\*)

### TAX BENEFITS

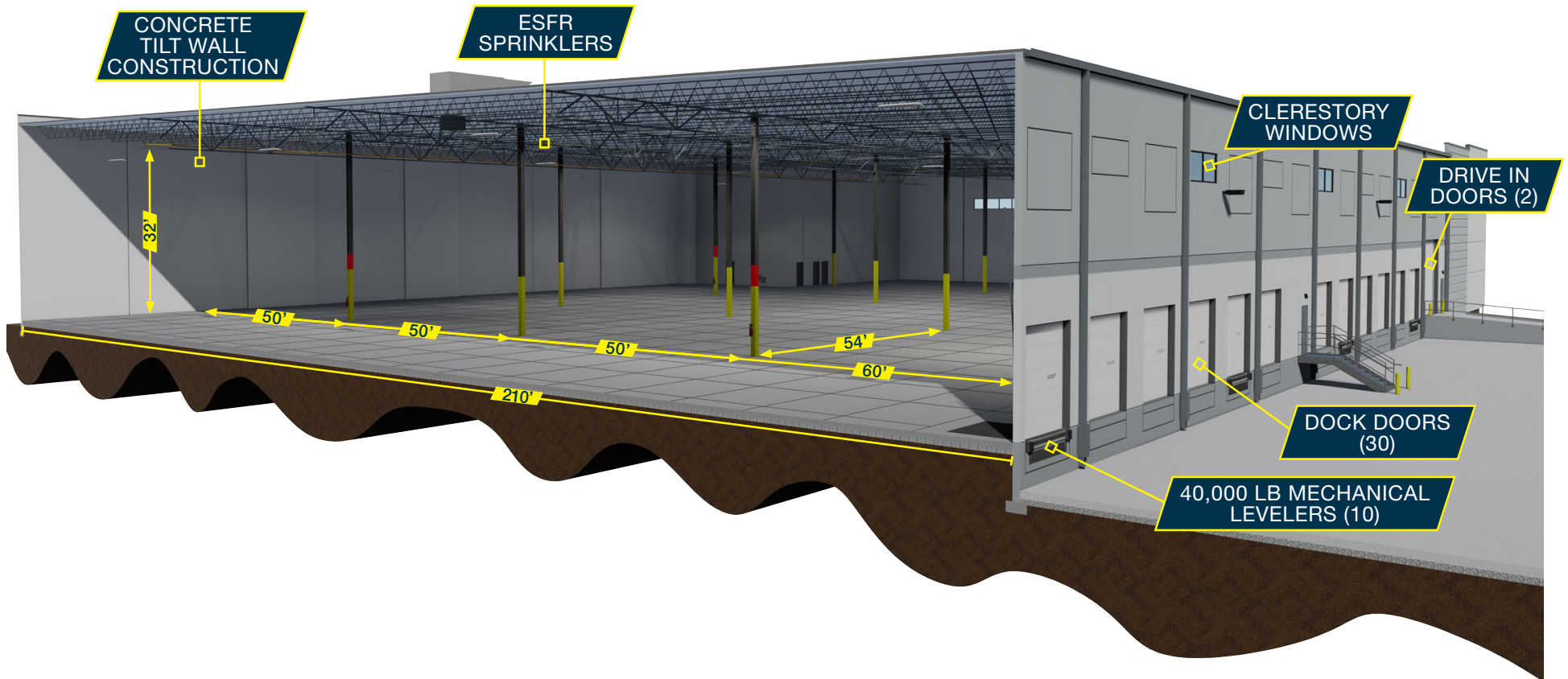
SSRC/FILOT tax abatement

30 yr abatement exemption in place

*\*Power subject to demand study provided by user  
and review by service provider*

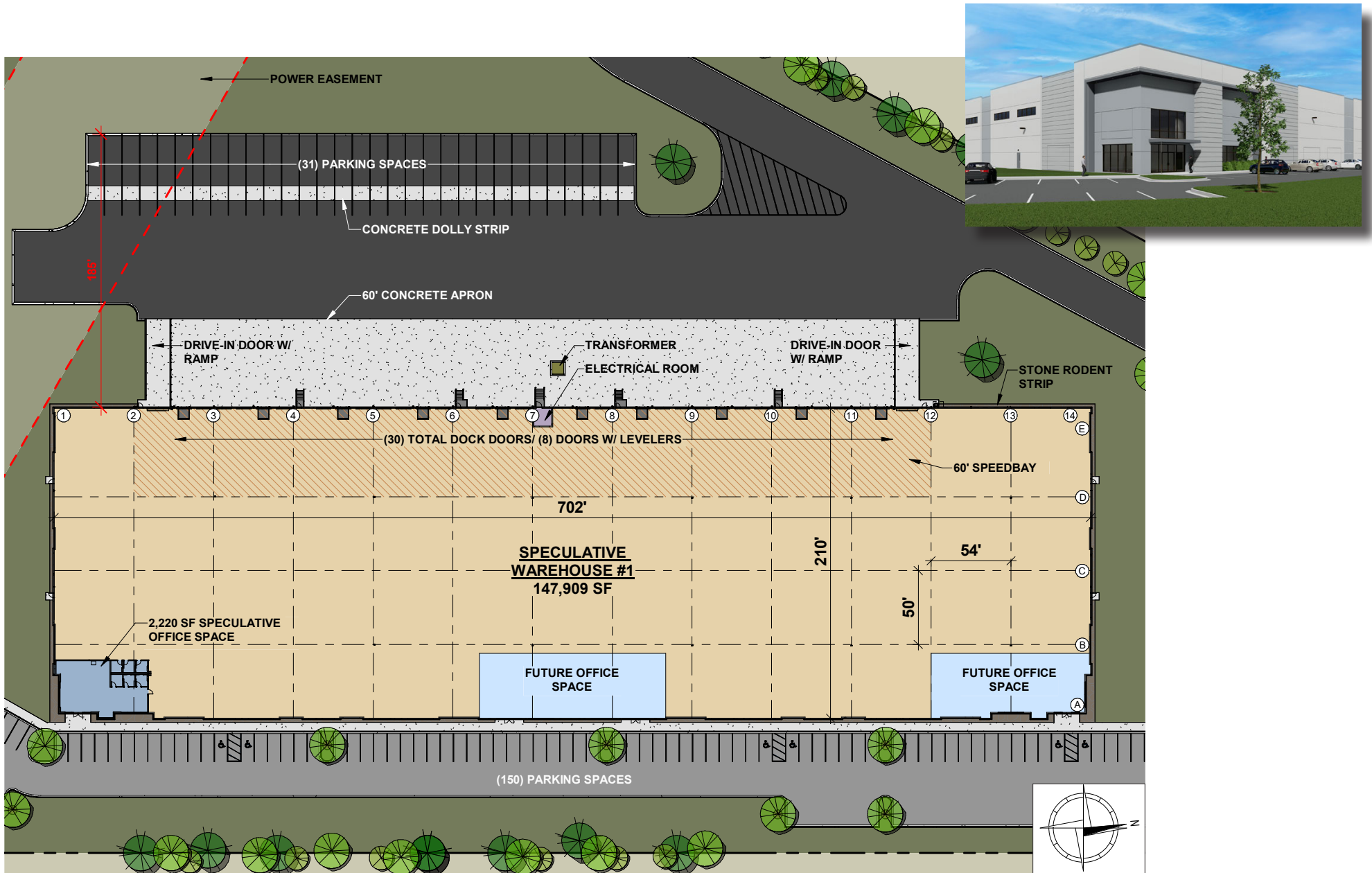
# BLDG 01 OVERVIEW

Alliance Industrial Park | Williamston, SC



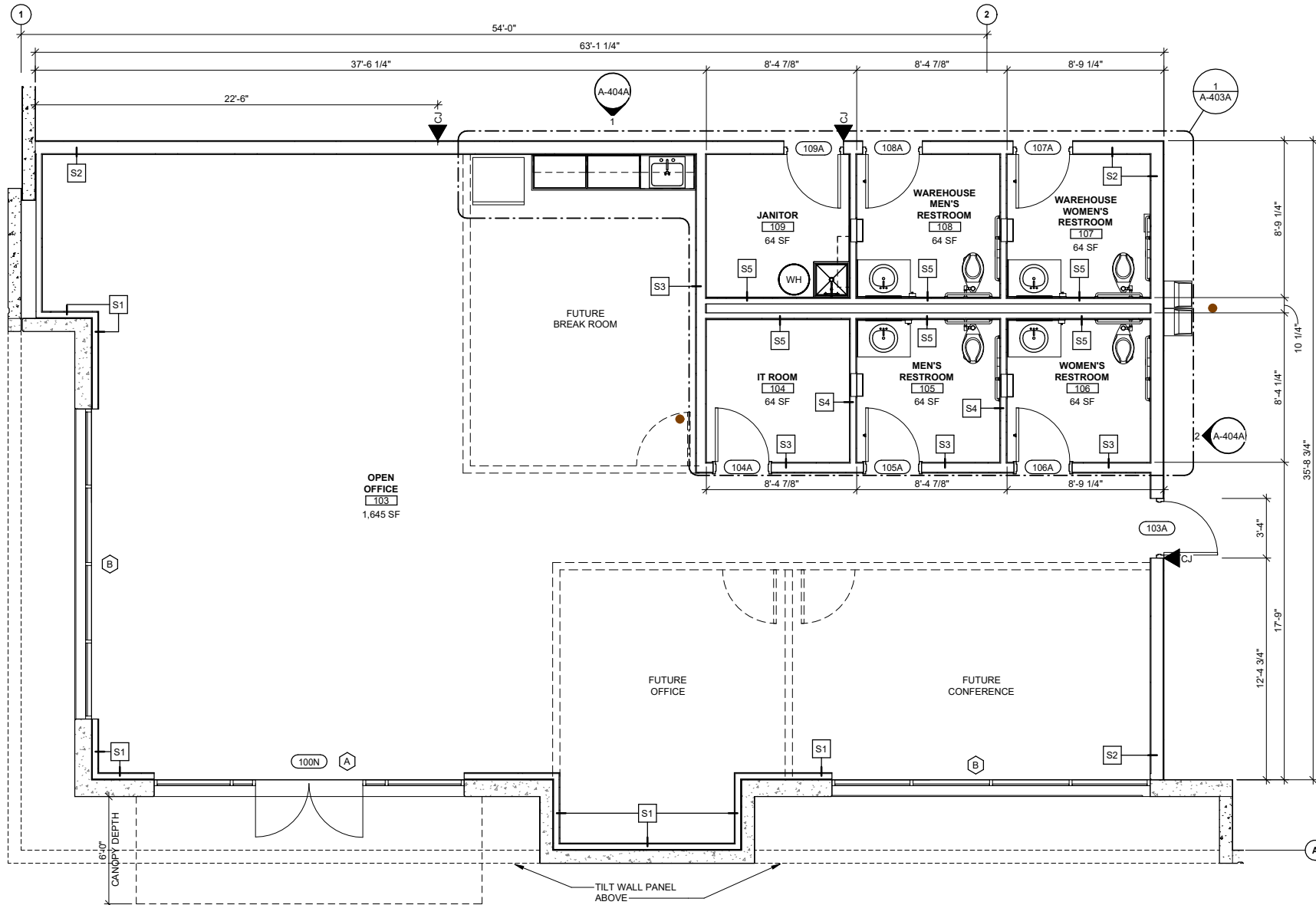
# BLDG 01 FLOOR PLAN

Alliance Industrial Park | Williamston, SC



# BLDG 01 SPEC OFFICE

Alliance Industrial Park | Williamston, SC



# BLDG 02 OVERVIEW

Alliance Industrial Park | Williamston, SC

## 172 ALLIANCE BLVD



±78,170 Total SF & ±0.7 acres of outside storage

Suites available from ±18,000 SF

Spec office ±2,220 SF

Concrete tilt wall construction

160' Building depth | Rear load configuration

32' Clear height

56' x 50' Column spacing | 60' Speed bay

Motion activated LED show lighting (1 per bay)

ESFR Sprinkler system | 100% Sprinkled

Power: 1,200 Amps, 3 -Phase, 480 V

Clerestory windows throughout

19 Dock high doors (total)

7 Doors w/40,000 LB mechanical levelers

2 Drive-in doors

130' Truck court depth

82 car parking spaces

### UTILITIES

WATER | Big Creek Water District

SEWER | Anderson County

NATURAL GAS | Fort Hill Natural Gas

ELECTRIC | Blue Ridge Electric Cooperative  
(up to 10 MW power available\*)

### TAX BENEFITS

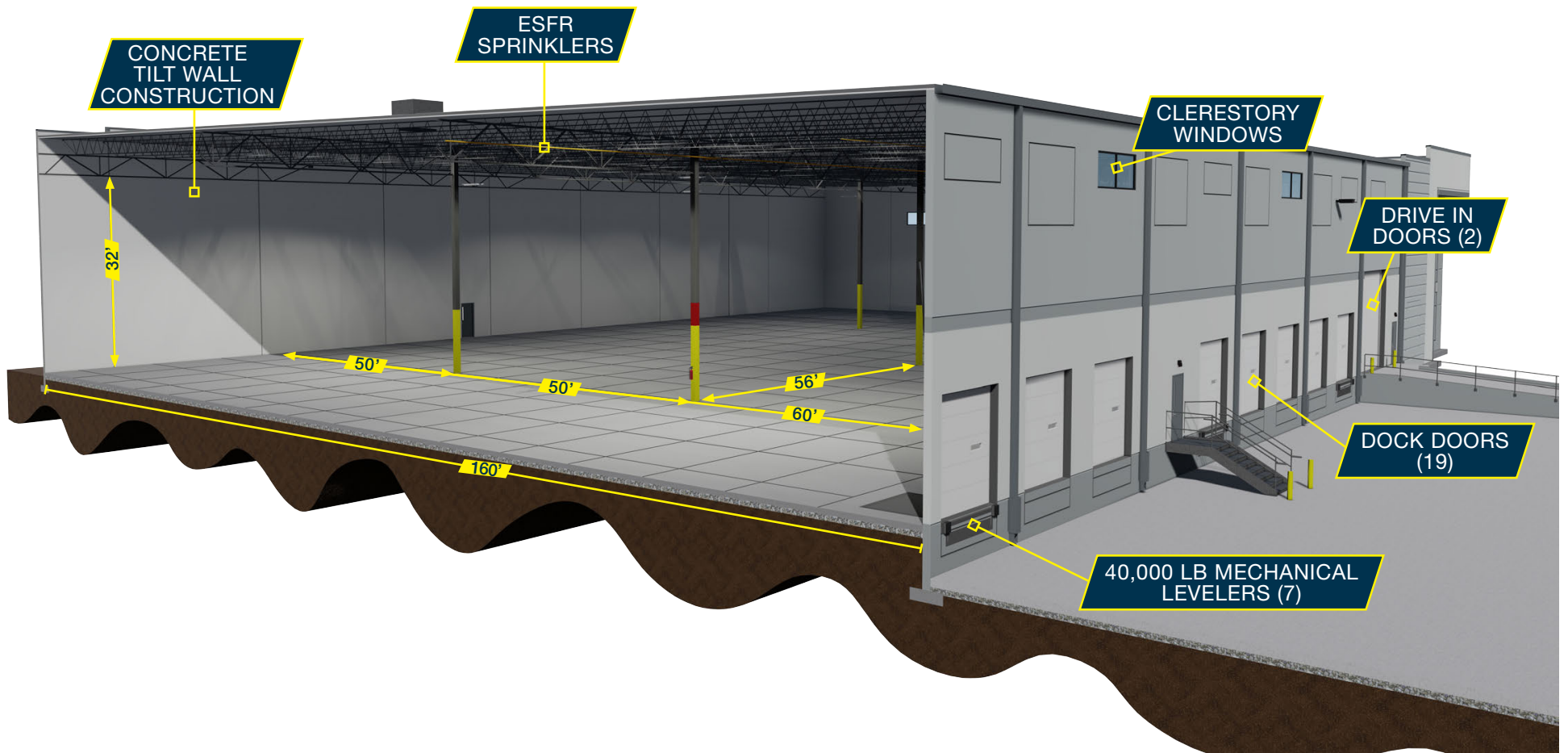
SSRC/FILOT tax abatement

30 yr abatement exemption in place

*\*Power subject to demand study provided by user  
and review by service provider*

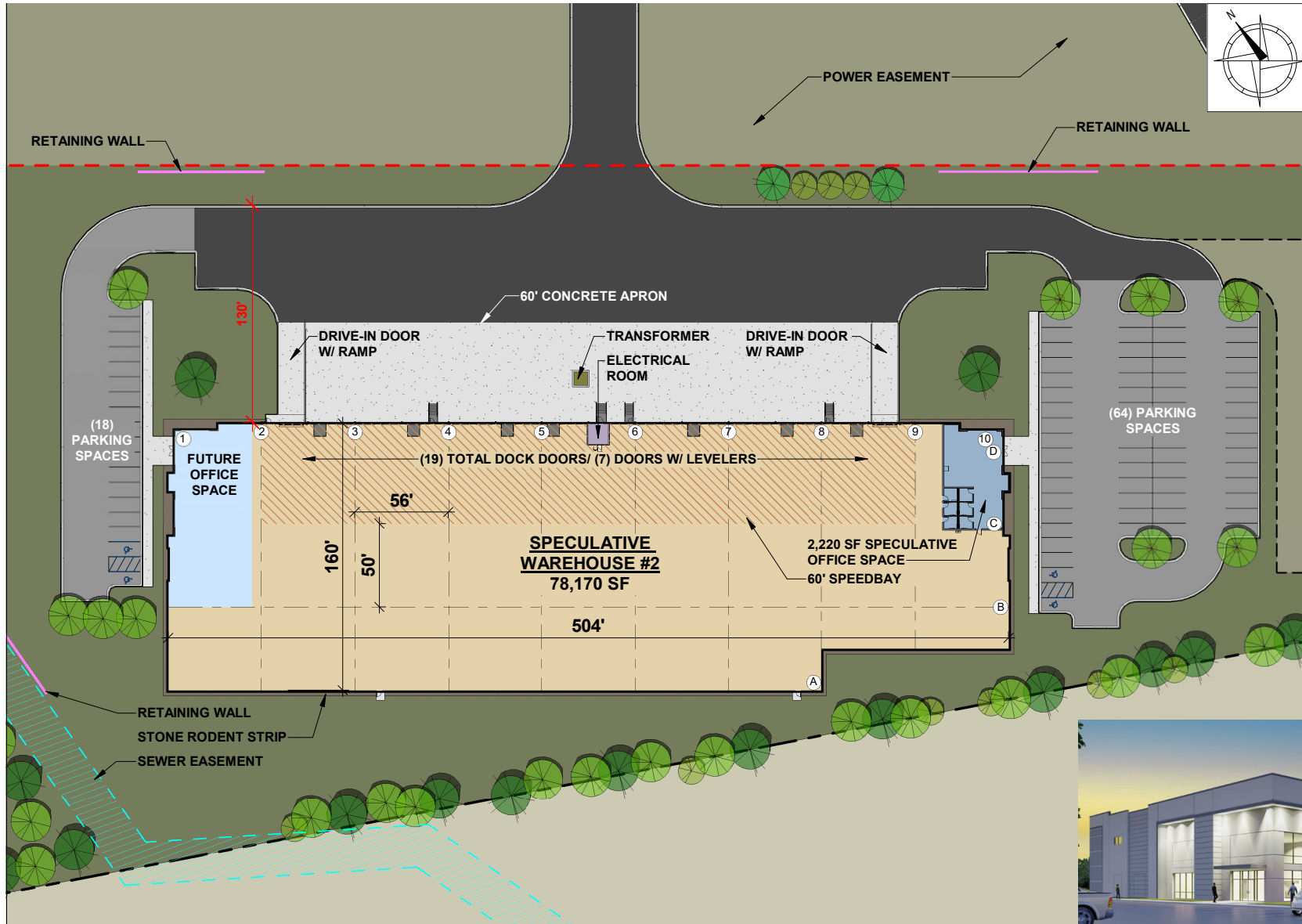
# BLDG 02 OVERVIEW

Alliance Industrial Park | Williamston, SC



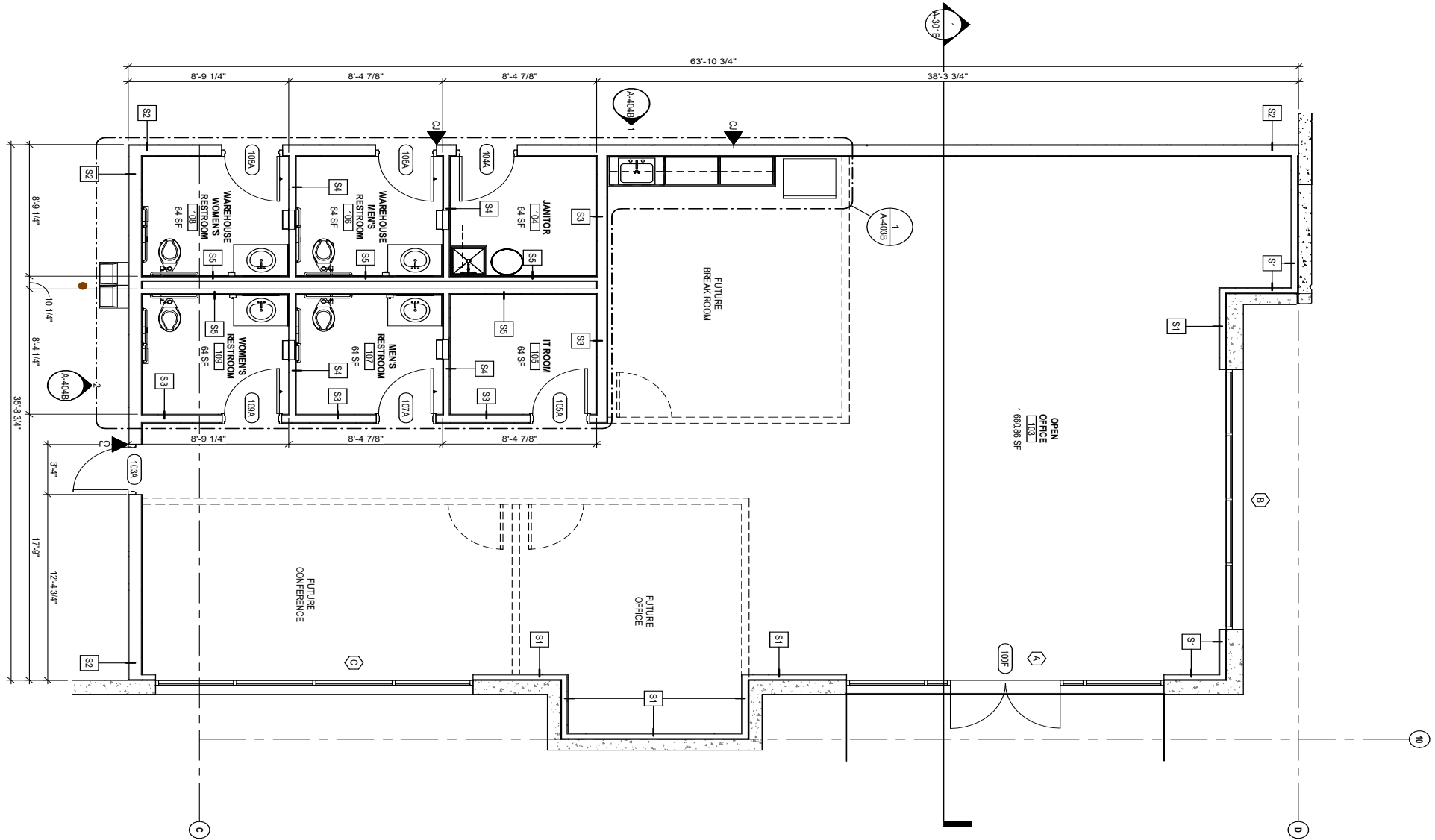
# BLDG 02 FLOOR PLAN

Alliance Industrial Park | Williamston, SC



# BLDG 02 SPEC OFFICE

Alliance Industrial Park | Williamston, SC



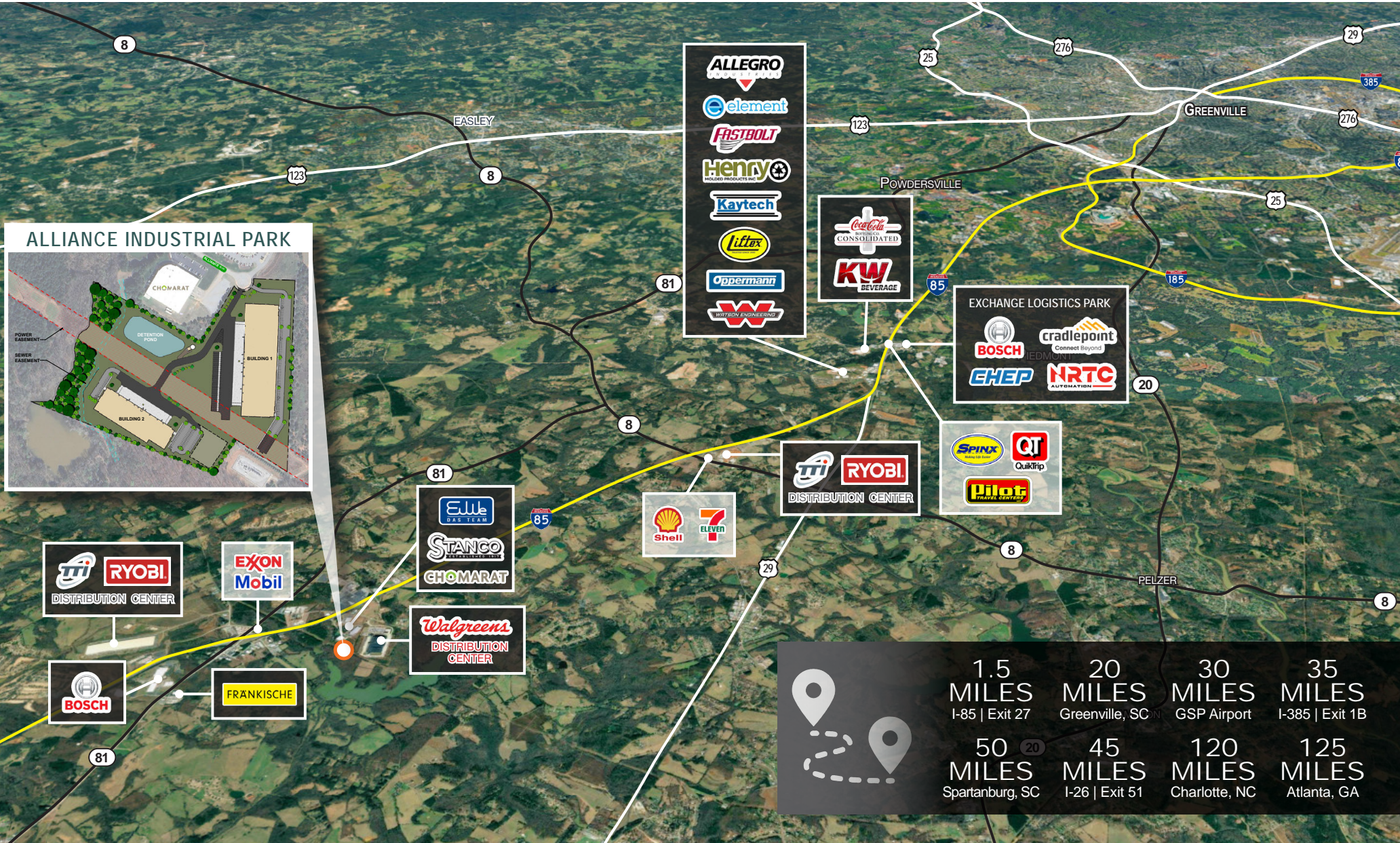
# PARK AERIAL

Alliance Industrial Park | Williamston, SC



# MARKET MAP

Alliance Industrial Park | Williamston, SC



# SUBMARKET MAP

Alliance Industrial Park | Williamston, SC



# ALLIANCE INDUSTRIAL PARK

BUILDING 01 ±147,909 SF | BUILDING 02 ±78,170 SF



FOR ADDITIONAL  
INFORMATION,  
CONTACT THE  
LEASING TEAM



**CLAY WILLIAMS, SIOR**

Shareholder  
clay@naief.com  
(M) 864.706.7622

**GRICE HUNT, SIOR**

Shareholder  
grice@naief.com  
(M) 864.346.7611

**WILL COKER**

Broker  
wcoker@naief.com  
(M) 864.680.0526



101 E. Washington St, Ste 400  
Greenville, SC 29601  
www.naiearlefurman.com  
(O) 864.232.9040  
(F) 864.235.4300