

# Mill Creek Logistics - Building 1

West Chester, OH

## Key Facts

Property type Industrial space

Building size 169,522 SF

Space available 169,522 SF



## Contact Us

Learn more about this property or schedule a tour by reaching out to our local investment and leasing officer.

**Aaron Schmidt**

+1 (860) 713-3901

[aaron.schmidt@eqtpartners.com](mailto:aaron.schmidt@eqtpartners.com)

**Chris Simons**

+1 (330) 697-9131

[chris.simons@eqtpartners.com](mailto:chris.simons@eqtpartners.com)

# Mill Creek Logistics - Building 1

West Chester, OH

## BUILDING SPECIFICATIONS

Total Building Size: 169,522 SF	Drive-In Doors: 2 (12' x 14')
Available Building Space: 169,522 SF	Deep Staging Bay: 60'
Office Space: 2,640 SF	Car Parking: 116 spaces
Clear Height: 32'	Fire Protection: ESFR sprinkler system
Column Spacing: 53'6" x 50'	Power: 480/277 volt, 3-phase electric service
Dock Doors: 17 (9' x 10')	Lighting: LED with motion sensors



### Contact Us

Learn more about this property or schedule a tour by reaching out to our local investment and leasing officer.

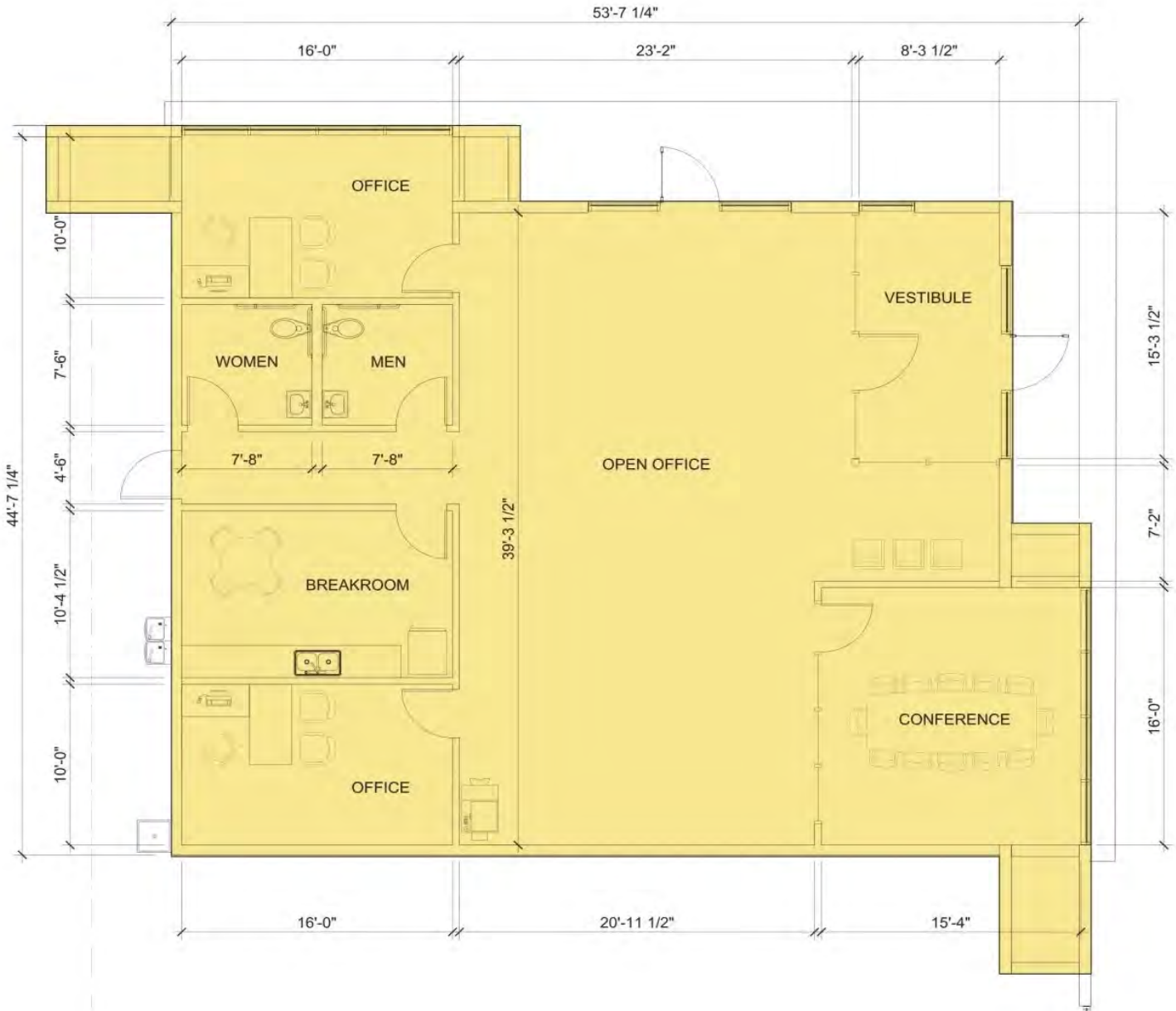
**Aaron Schmidt**  
 +1 (860) 713-3901  
[aaron.schmidt@eqtpartners.com](mailto:aaron.schmidt@eqtpartners.com)

**Chris Simons**  
 +1 (330) 697-9131  
[chris.simons@eqtpartners.com](mailto:chris.simons@eqtpartners.com)

# Mill Creek Logistics - Building 1

West Chester, OH

OFFICE PLAN - 2,640 SF



## Contact Us

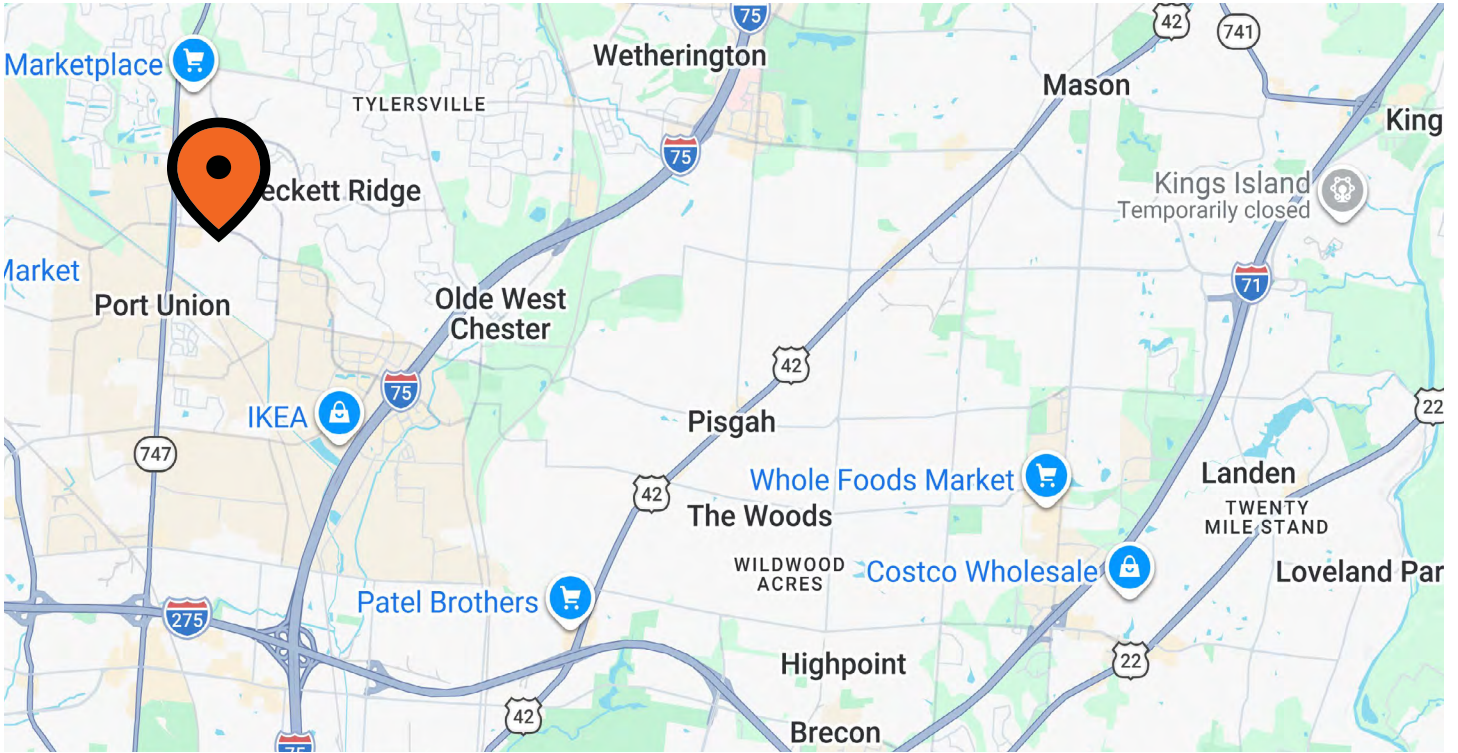
Learn more about this property or schedule a tour by reaching out to our local investment and leasing officer.

**Aaron Schmidt**  
+1 (860) 713-3901  
aaron.schmidt@eqtpartners.com

**Chris Simons**  
+1 (330) 697-9131  
chris.simons@eqtpartners.com

# Mill Creek Logistics - Building 1

West Chester, OH



## Contact Us

Learn more about this property or schedule a tour by reaching out to our local investment and leasing officer.

**Aaron Schmidt**

+1 (860) 713-3901

[aaron.schmidt@eqtpartners.com](mailto:aaron.schmidt@eqtpartners.com)

**Chris Simons**

+1 (330) 697-9131

[chris.simons@eqtpartners.com](mailto:chris.simons@eqtpartners.com)