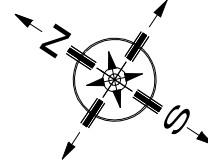
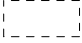
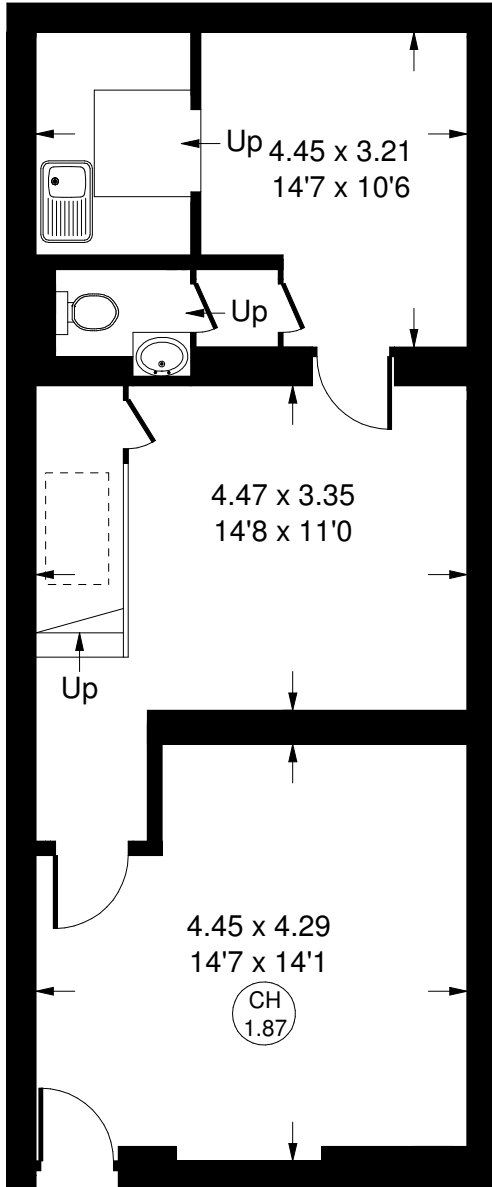


Ledbury Road, W11

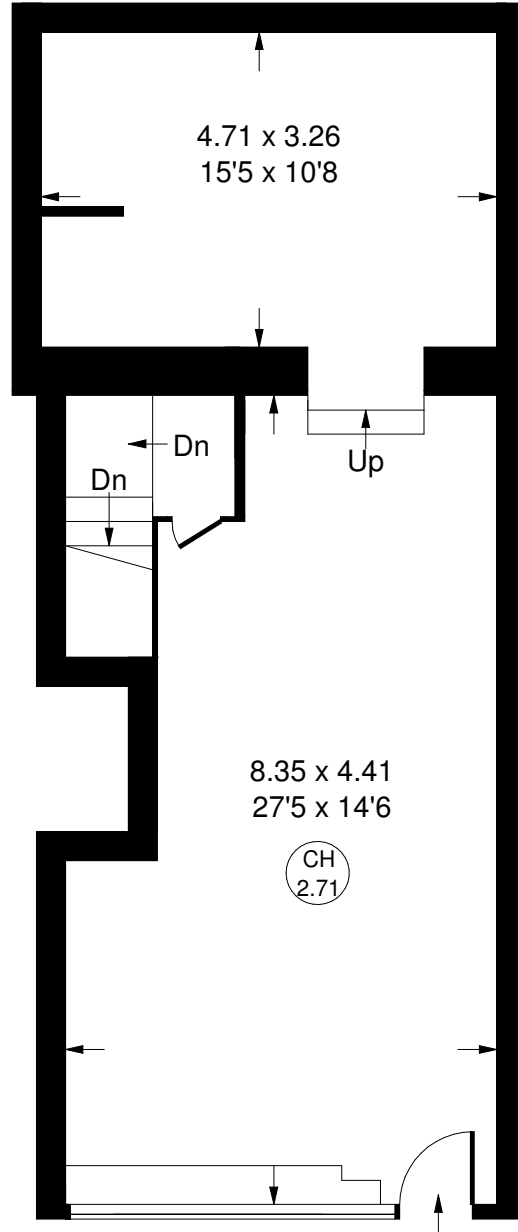
Approx. Gross Internal Area
Ground Floor = 52.6 sq m / 566 sq ft
Basement = 51.8 sq m / 558 sq ft
Total = 104.4 sq m / 1124 sq ft



 = Reduced headroom below 1.5 m / 5'0



Basement



Ground Floor

Whilst every attempt has been made to ensure the accuracy of the floor plan, measurements are approximate and not to scale.
No guarantee is given on the total square footage of the property quoted on the plan. Figures given are for guidance.
Plan is for illustration purposes only, not to be used for valuations.