

INDUSTRIAL WAREHOUSE AVAILABLE FOR LEASE

4203 CORONADO AVENUE, SUITE 1, STOCKTON, CA

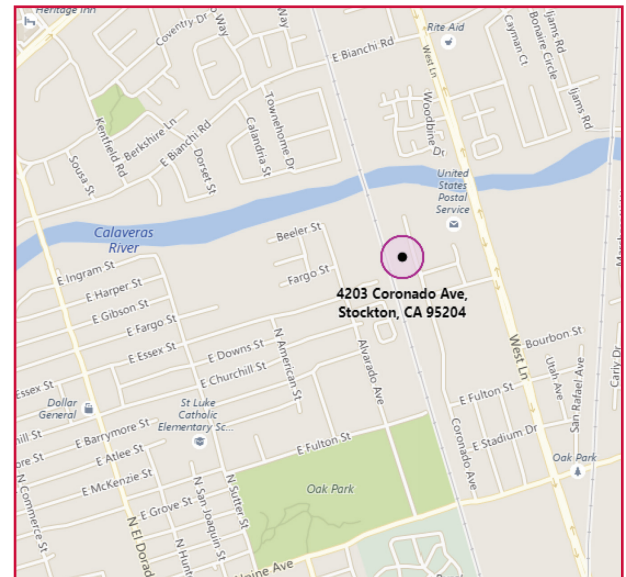


LISTING DATA

TOTAL BLDG SF: 13,080± SF
AVAILABLE SF: 2,400± SF

COMMENTS

- Suite 1: 2,400± SF
 - 700± SF office
 - Two (2) restrooms
 - Server/storage room
 - 100% conditioned office and warehouse
 - Grade Level Doors: Two (2) 10' x 10'
- 11'± - 12'± minimum clear height
- Small paved/fenced yard area
- Zoning: I-L (Limited Industrial – City of Stockton)
- Indicated Power: 100 amp, 120/240 volt, 3 phase



ECONOMIC DATA

LEASE RATE: \$0.97 + NET

Mason Chambliss

BRE #02237204
mchambliss@lee-associates.com
D 209.983.6831
C 925.336.9660

Darren McFadden

BRE # 01276439
dmcfadden@lee-associates.com
D 209.983.6821
C 209.598.1180

INDUSTRIAL WAREHOUSE AVAILABLE FOR LEASE

4203 CORONADO AVENUE, SUITE 1, STOCKTON, CA



ECONOMIC DATA

LEASE RATE: \$0.97 + NET

CONTACT:

Mason Chambliss

BRE #02237204

mchambliss@lee-associates.com

D 209.983.6831

C 925.336.9660

Darren McFadden

BRE # 01276439

dmcfadden@lee-associates.com

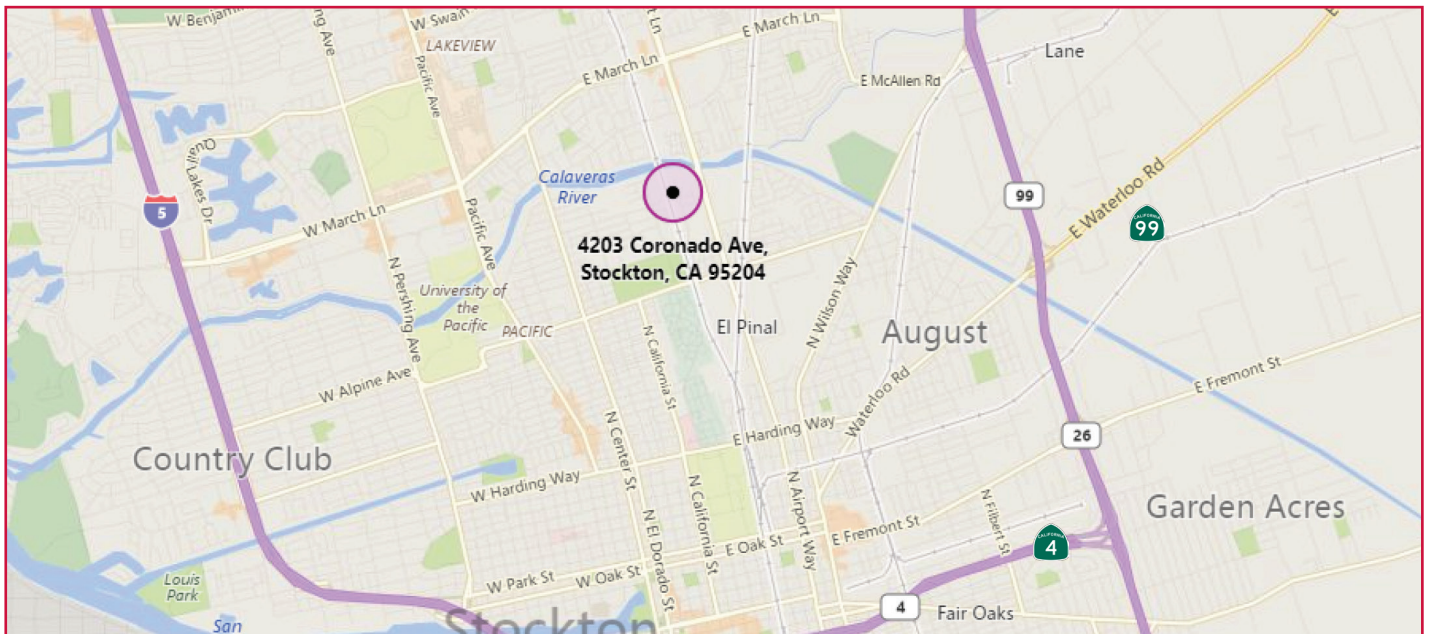
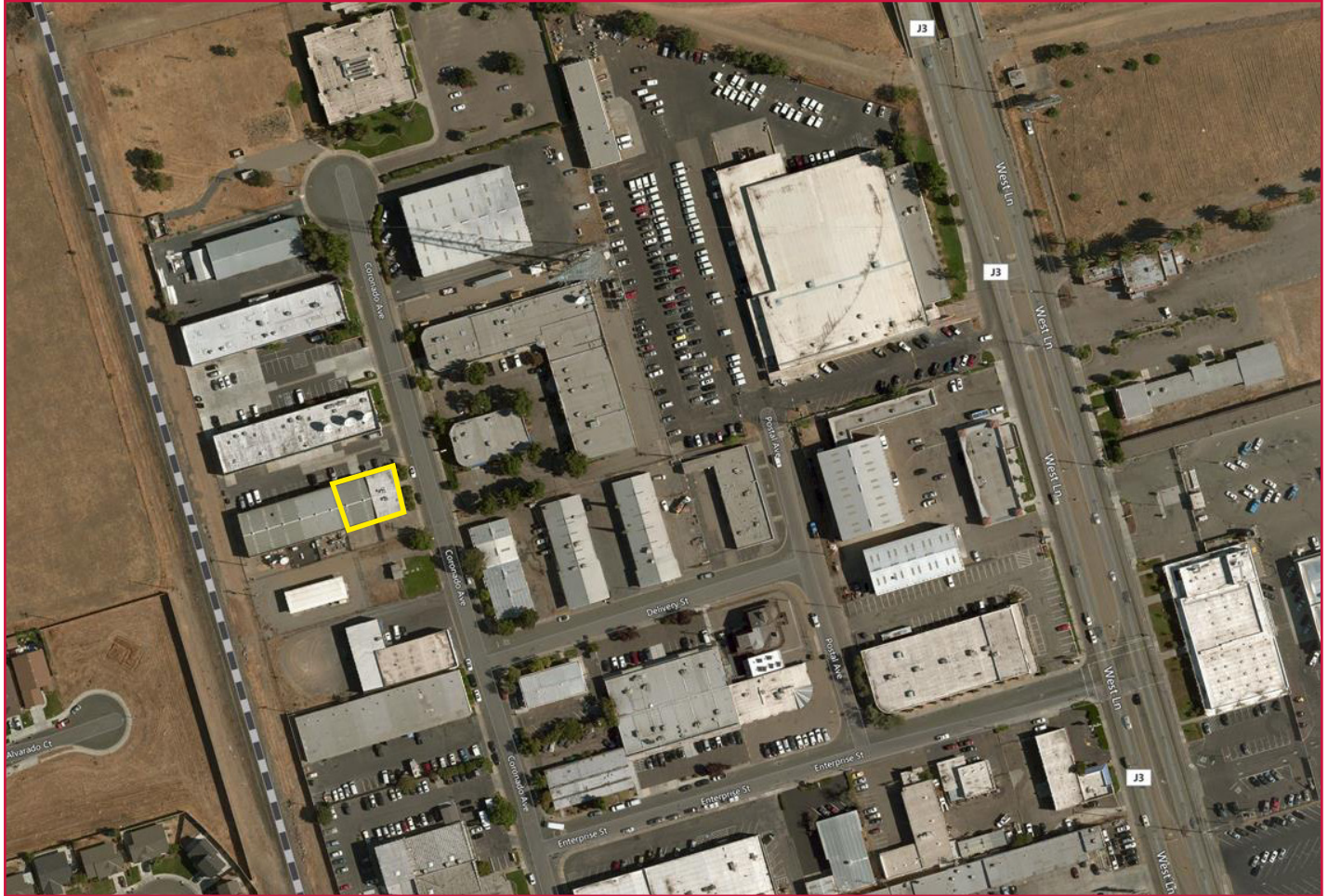
D 209.983.6821

C 209.598.1180

All information furnished regarding property for sale, rental or financing is from sources deemed reliable, but no warranty or representation is made to the accuracy thereof and same is submitted to errors, omissions, change of price, rental or other conditions prior to sale, lease or financing or withdrawal without notice. No liability of any kind is to be imposed on the broker herein.

INDUSTRIAL WAREHOUSE AVAILABLE FOR LEASE

4203 CORONADO AVENUE, SUITE 1, STOCKTON, CA



All information furnished regarding property for sale, rental or financing is from sources deemed reliable, but no warranty or representation is made to the accuracy thereof and same is submitted to errors, omissions, change of price, rental or other conditions prior to sale, lease or financing or withdrawal without notice. No liability of any kind is to be imposed on the broker herein.