

LOS ALAMITOS PLAZA

10900 LOS ALAMITOS BLVD, LOS ALAMITOS, CA 90720

RETAIL / OFFICE SPACE



PROPERTY HIGHLIGHTS

Available Space	±912 - ±3,432 RSF
Asking Rate	\$2.75 / NNN / PSF (RETAIL) \$2.00 / MG / PSF (OFFICE)
NNN Expenses	\$0.65 / PSF

- Mixed-Use Property Consisting of Both Retail and Office Space
- Prominent Los Alamitos Location
- Well Maintained Retail/Office Center
- Plentiful Amenities Within Walking Distance
- Excellent Exposure and Signage Available on Los Alamitos Boulevard
- Easy Access to the 605/405/22 FWYs
- Los Alamitos Plaza is Located on One of the Busiest Intersections in all of Orange County

Contact Us Today!

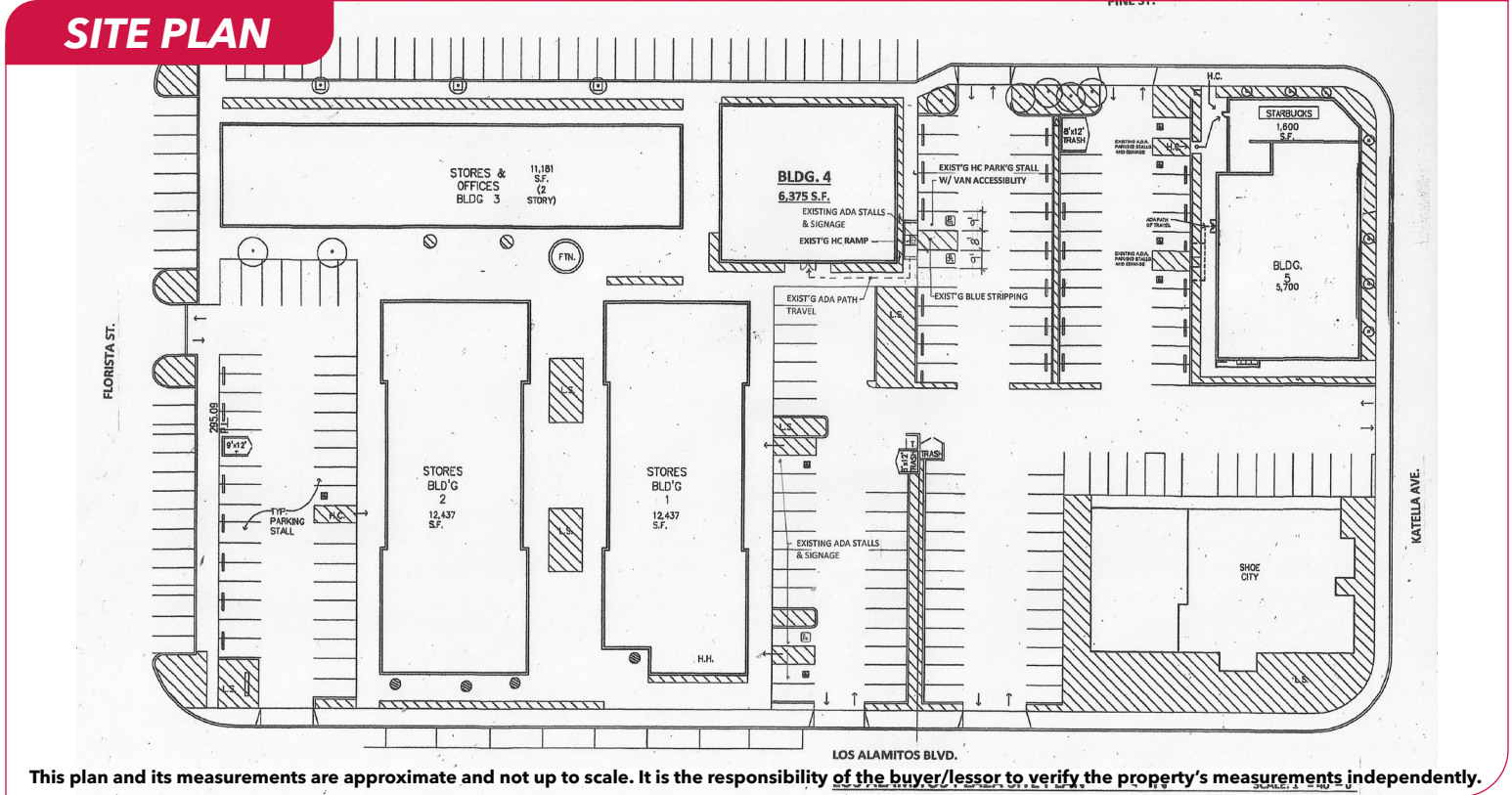
Josh Reilly ^{MBA}
Principal | DRE LIC 01474368
jreilly@leelalb.com
562.505.4848

Kurt Hertzog
Associate | DRE LIC 02011145
khertzog@leelalb.com
562.354.2524

LOS ALAMITOS PLAZA
10900 LOS ALAMITOS BLVD, LOS ALAMITOS, CA 90720

RETAIL / OFFICE SPACE

UNIT	TYPE	SIZE	DESCRIPTION
208	Office	±912 RSF	<ul style="list-style-type: none"> Reception Area Two (2) Private Offices Storage Area
102	Medical	±3,432 RSF	<ul style="list-style-type: none"> Former Medical Space; Multiple Private Exam Rooms Large Reception Area Frontage available along Los Alamitos Boulevard Courtyard Access
120	Retail	±2,800 RSF	<ul style="list-style-type: none"> Shell Space Courtyard Access
132	Retail	±1,200 RSF	<ul style="list-style-type: none"> Large Open Area



Josh Reilly MBA
Principal | DRE LIC 01474368
jreilly@leelalb.com
949.525.2720

Kurt Hertzog
Associate | DRE LIC 02011145
khertzog@leelalb.com
562.354.2524

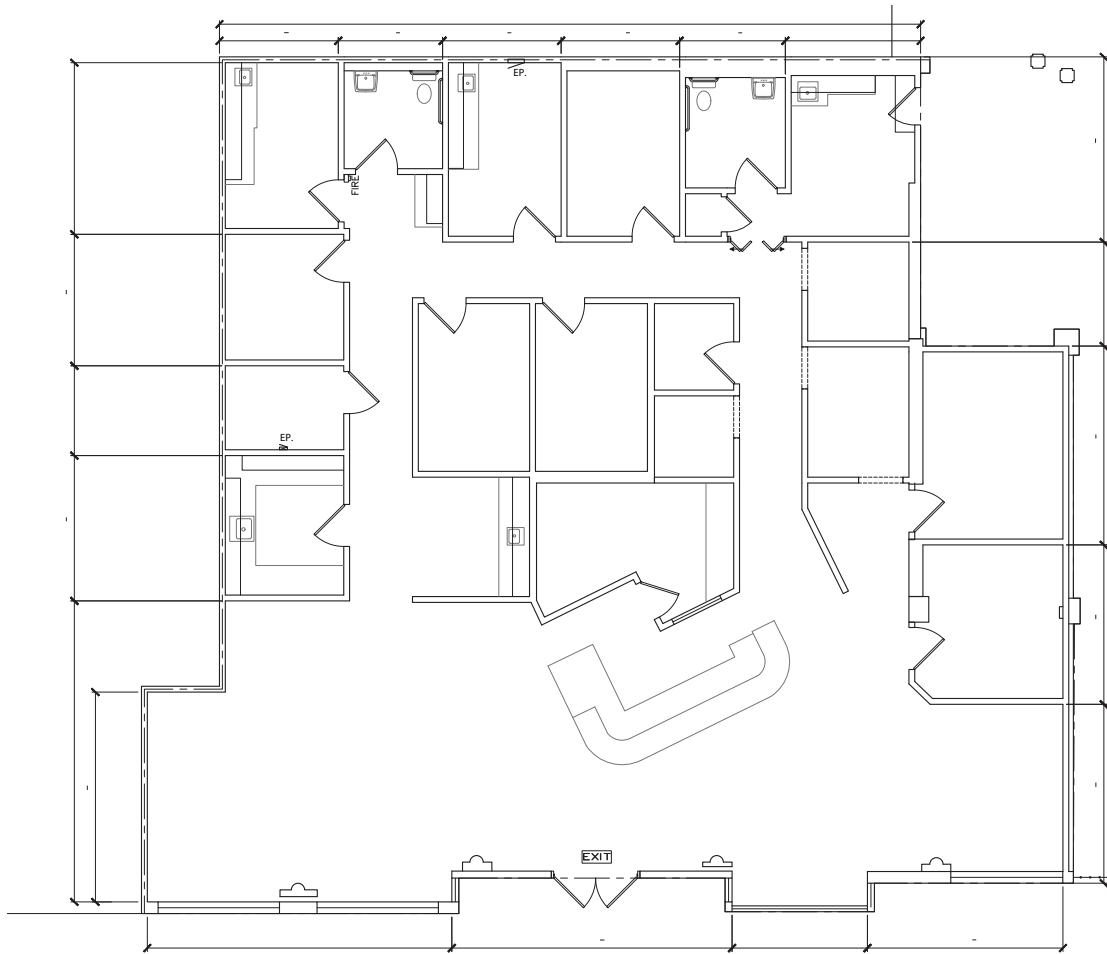
Lee & Associates Los Angeles - Long Beach Inc.
DRE License 01069854
5000 E Spring St, Suite 600, Long Beach, CA 90815

LOS ALAMITOS PLAZA

10900 LOS ALAMITOS BLVD, LOS ALAMITOS, CA 90720

**RETAIL / OFFICE
SPACE**

FLOOR PLAN - UNIT 102



This plan and its measurements are approximate and not up to scale. It is the responsibility of the buyer/lessor to verify the property's measurements independently.

Josh Reilly ^{MBA}
Principal | DRE LIC 01474368
jreilly@leelalb.com
949.525.2720

Kurt Hertzog
Associate | DRE LIC 02011145
khertzog@leelalb.com
562.354.2524

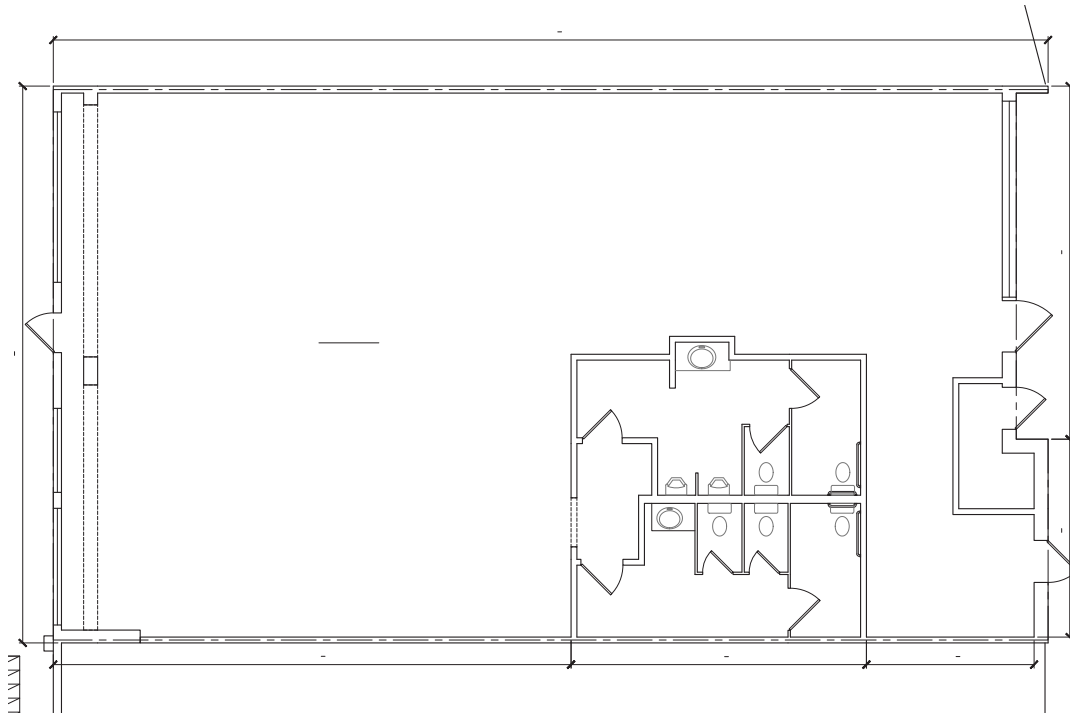
Lee & Associates Los Angeles - Long Beach Inc.
DRE License 01069854
5000 E Spring St, Suite 600, Long Beach, CA 90815

LOS ALAMITOS PLAZA

10900 LOS ALAMITOS BLVD, LOS ALAMITOS, CA 90720

**RETAIL / OFFICE
SPACE**

FLOOR PLAN - UNIT 120



This plan and its measurements are approximate and not up to scale. It is the responsibility of the buyer/lessor to verify the property's measurements independently.

Josh Reilly ^{MBA}
Principal | DRE LIC 01474368
jreilly@leelalb.com
949.525.2720

Kurt Hertzog
Associate | DRE LIC 02011145
khertzog@leelalb.com
562.354.2524

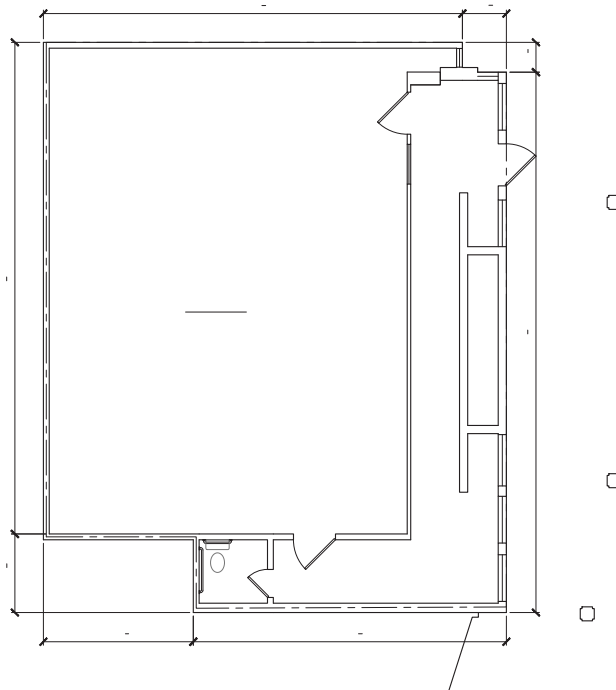
Lee & Associates Los Angeles - Long Beach Inc.
DRE License 01069854
5000 E Spring St, Suite 600, Long Beach, CA 90815

LOS ALAMITOS PLAZA

10900 LOS ALAMITOS BLVD, LOS ALAMITOS, CA 90720

**RETAIL / OFFICE
SPACE**

FLOOR PLAN - UNIT 132



This plan and its measurements are approximate and not up to scale. It is the responsibility of the buyer/lessor to verify the property's measurements independently.

Josh Reilly ^{MBA}
Principal | DRE LIC 01474368
jreilly@leelalb.com
949.525.2720

Kurt Hertzog
Associate | DRE LIC 02011145
khertzog@leelalb.com
562.354.2524

Lee & Associates Los Angeles - Long Beach Inc.
DRE License 01069854
5000 E Spring St, Suite 600, Long Beach, CA 90815

LOS ALAMITOS PLAZA

10900 LOS ALAMITOS BLVD, LOS ALAMITOS, CA 90720

**RETAIL / OFFICE
SPACE**



Josh Reilly ^{MBA}
Principal | DRE LIC 01474368
jreilly@leelalb.com
949.525.2720

Kurt Hertzog
Associate | DRE LIC 02011145
khertzog@leelalb.com
562.354.2524

Lee & Associates Los Angeles - Long Beach Inc.
DRE License 01069854
5000 E Spring St, Suite 600, Long Beach, CA 90815

LOS ALAMITOS PLAZA

10900 LOS ALAMITOS BLVD, LOS ALAMITOS, CA 90720

RETAIL / OFFICE SPACE



Josh Reilly MBA
Principal | DRE LIC 01474368
jreilly@leelalb.com
949.525.2720

Kurt Hertzog
Associate | DRE LIC 02011145
khertzog@leelalb.com
562.354.2524

Lee & Associates Los Angeles - Long Beach Inc.
DRE License 01069854
5000 E Spring St, Suite 600, Long Beach, CA 90815