

960 W. Rollins Road
Round Lake Heights, IL

ENTRE
Commercial Realty LLC

For Sale or Lease

AVAILABLE: ± 6,810 SF

AVAILABLE SIZE:	± 6,810 SF
LAND AREA:	0.94
SHOWROOM/OFFICE SIZE:	± 2,000
CONSTRUCTION:	STEEL
PARKING:	±20 SPACES
YEAR BUILT:	1997
CEILING HEIGHT:	14'
POWER:	400 AMPS/240V/ 3P
LOADING:	2 DRIVE-IN DOORS (10'X12')
ZONING:	BUSINESS DISTRICT
RE TAXES:	\$15,078.24 \$2.22 PSF (PAID IN 2025)

LEASE RATE: \$11.00 PSF NNN

SALE PRICE: \$785,000



Future Parking
Lot Expansion
Capabilities



(2) 10'x12'
Drive-In
Doors



Showroom
/Office



Rare Size
Freestanding
Facility

Presented By:



Elisabeth Lazzara

847-602-0503

elazzara@entrecommercial.com



Mike Deserto

224-588-3026

mdeserto@entrecommercial.com

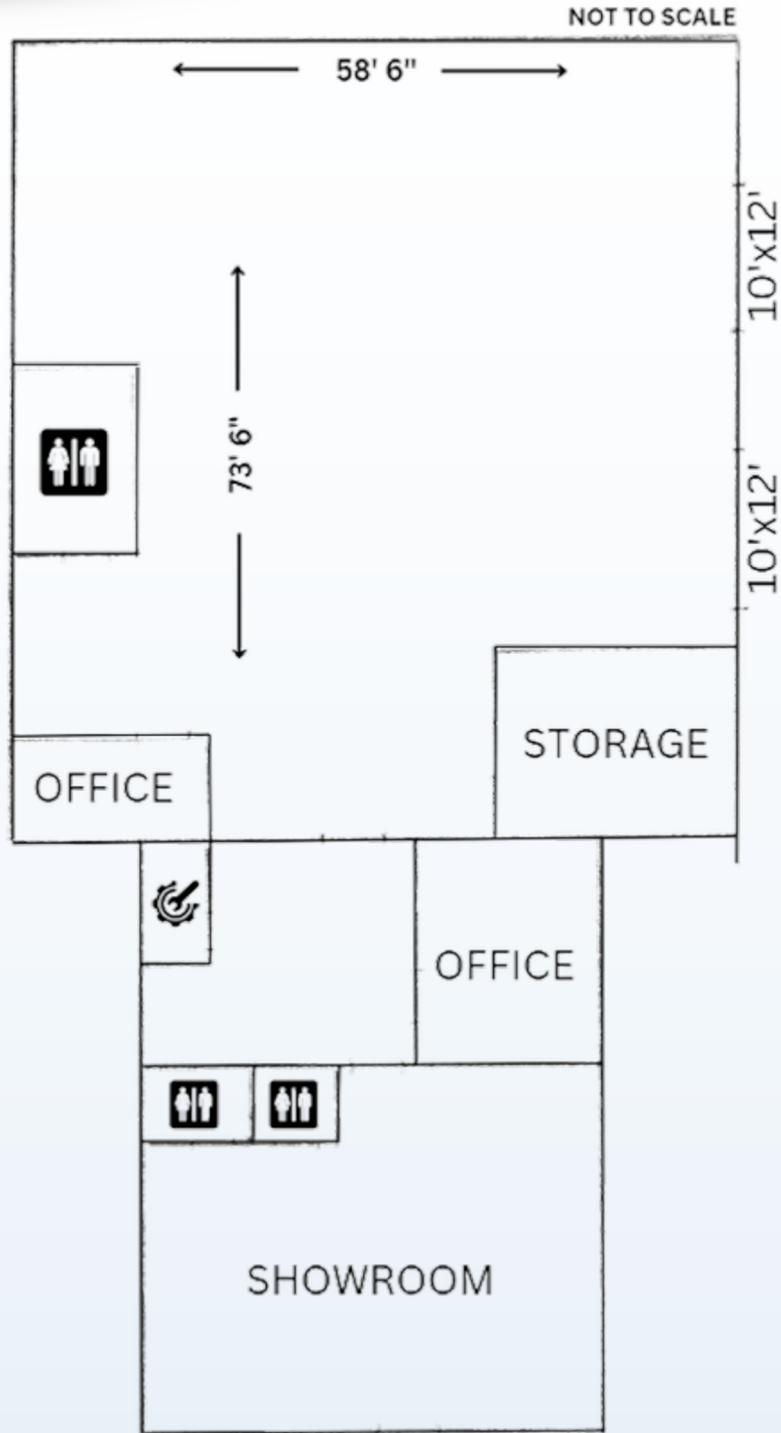


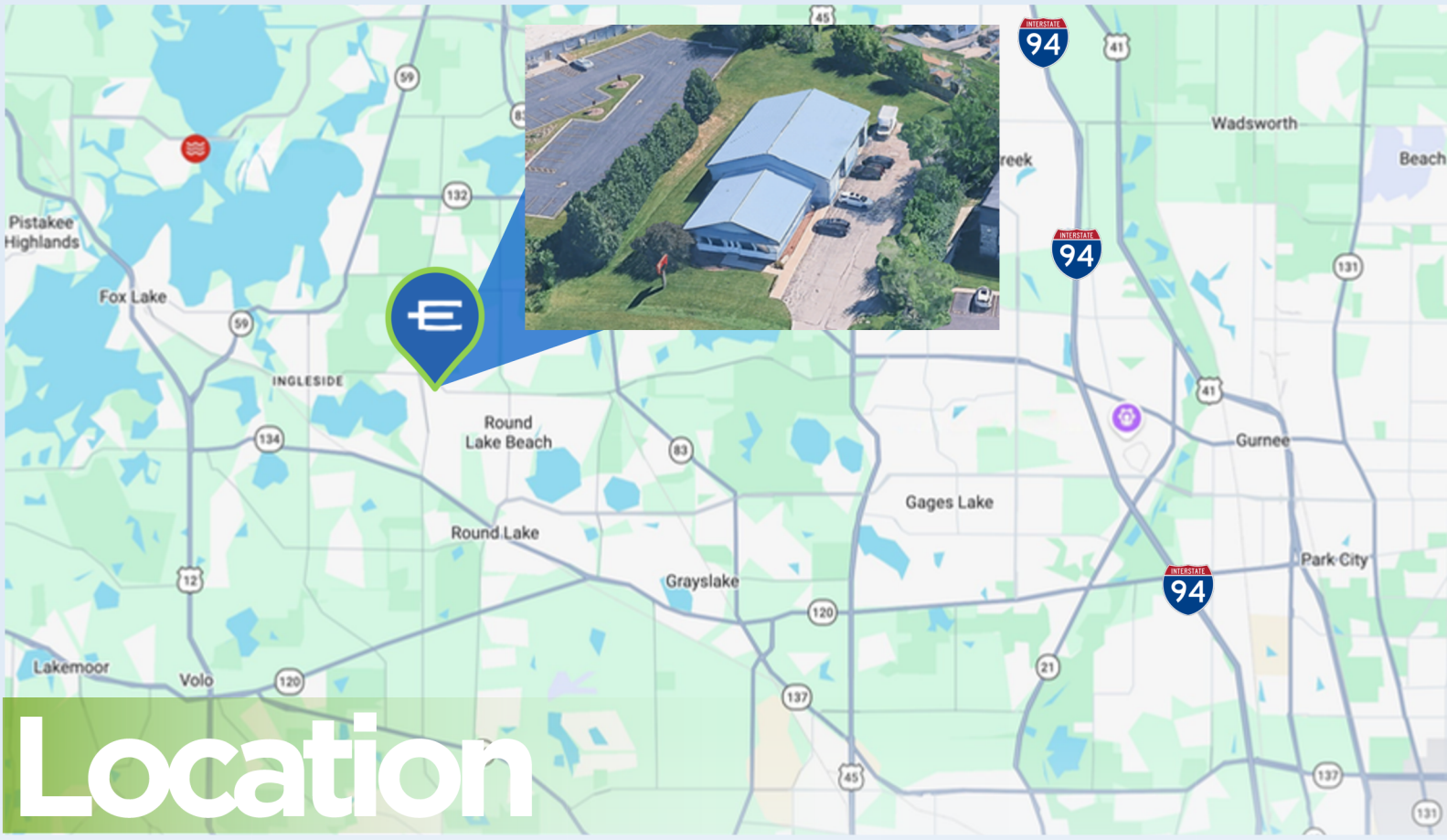
Cory Kay

224-532-2497

ckay@entrecommercial.com

Floor Plan





Location

960 W. Rollins Road
 Round Lake Heights, IL



Lake County

Positioned between Chicago and Milwaukee, Lake County offers prime access to major transportation routes, a strong talent pool, and a thriving mix of corporate, industrial, and research-driven industries. With modern infrastructure, welcoming communities, and room for business growth, the region supports innovation, productivity, and sustained economic success.

3350 Salt Creek Lane, Suite 104
 Arlington Heights, IL 60005

