

4413 Hamann Parkway - Hamann Industrial Park

22,523± SF Industrial/Warehouse Facility For Sale

Willoughby, Ohio 44094 (Lake County)



4413 Hamann Pkwy, Willoughby, OH 44094

Property Features:

- 22,523± SF Industrial Facility on 1.1019± Acres
- 20,520± SF Warehouse Area
- 2,003± SF Office Area
- Fully Air-Conditioned
- 400 Amp, 480 Volt, 3-Phase Power
- Bus Duct
- 12'-18' Ceiling Height
- Three Overhead Doors: 14'x12', 12'x10' & 8'x10'
- Kitchen and Lunchroom
- Restrooms, Locker Room
- Three Private Offices, Conference Room
- Sitting Area Adjacent to Conference Room
- Reception Area, Kitchen and Two (2) Restrooms
- Zoned L-I, Light Industrial District
- 18 Parking Spaces including 1 Handicapped
- Easy Access to Euclid Ave (US Route 20), SOM Center Rd (SR 91) and SR 2

Sale Price \$1,600,000.00

Contact:

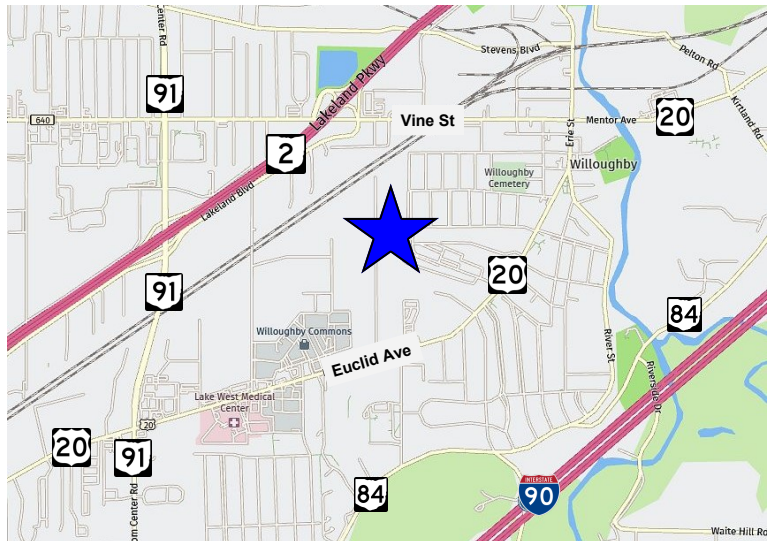
David Sigg, CCIM, Broker

BRKP.2014005061

440-255-5552 x14 Office

440-668-3300 Cell

Sigg@GlobalCommercialRE.com



GLOBAL

Real Estate Advisors Inc.
Broker
www.GlobalCommercialRE.com

440-255-5552

This information has been secured from sources we believe are reliable, but we make no representations or warranties, expressed or implied, as to the accuracy of the information. References to condition, square footage or age are approximate. Buyer or Tenant acknowledges that they are relying on their own investigations and are not relying on Broker provided information. Procuring broker shall only be entitled to a commission, calculated in accordance with the rates approved by our principal only if such procuring broker executes a brokerage agreement acceptable to us and our principal and the conditions as set forth in the brokerage agreement are fully and unconditionally satisfied. Although all information furnished regarding property for sale, rental, or financing is from sources deemed reliable, such information has not been verified and no express representation is made nor is any to be implied as to the accuracy thereof and it is submitted subject to errors, omissions, change of price, rental or other conditions, prior sale, lease or financing, or withdrawal without notice and to any special conditions imposed by our principal.

4413 Hamann Parkway - Hamann Industrial Park

22,523± SF Industrial/Warehouse Facility For Sale

Willoughby, Ohio 44094 (Lake County)



Contact:

David Sigg, CCIM, Broker

BRKP.2014005061

440-255-5552 x14 Office

440-668-3300 Cell

Sigg@GlobalCommercialRE.com



GLOBAL

Real Estate Advisors Inc.
Broker

www.GlobalCommercialRE.com

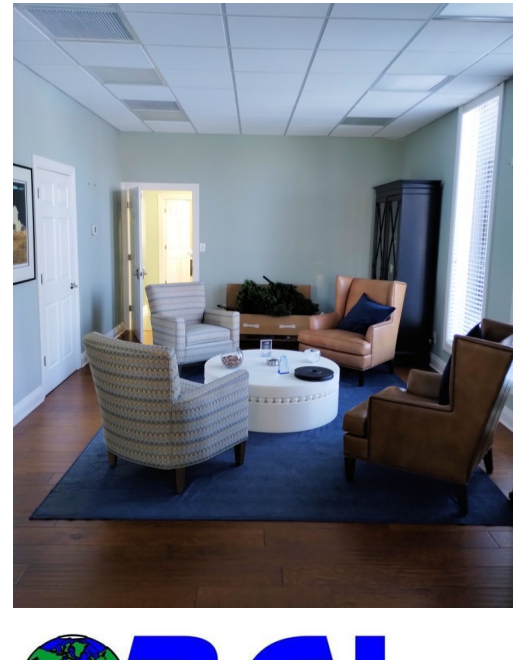
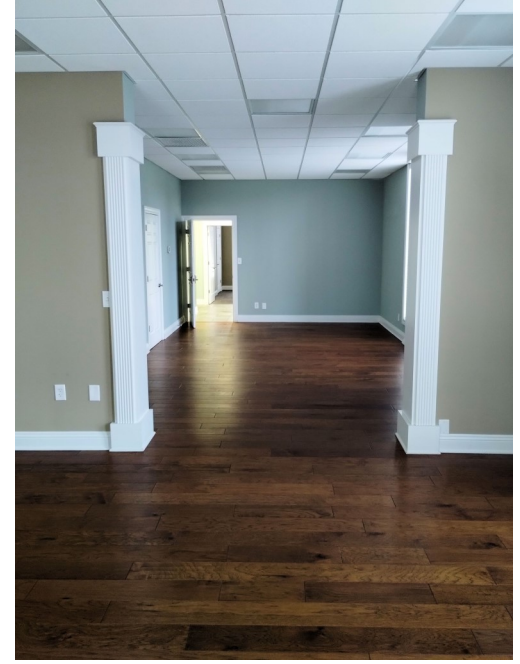
440-255-5552

This information has been secured from sources we believe are reliable, but we make no representations or warranties, expressed or implied, as to the accuracy of the information. References to condition, square footage or age are approximate. Buyer or Tenant acknowledges that they are relying on their own investigations and are not relying on Broker provided information. Procuring broker shall only be entitled to a commission, calculated in accordance with the rates approved by our principal only if such procuring broker executes a brokerage agreement acceptable to us and our principal and the conditions as set forth in the brokerage agreement are fully and unconditionally satisfied. Although all information furnished regarding property for sale, rental, or financing is from sources deemed reliable, such information has not been verified and no express representation is made nor is any to be implied as to the accuracy thereof and it is submitted subject to errors, omissions, change of price, rental or other conditions, prior sale, lease or financing, or withdrawal without notice and to any special conditions imposed by our principal.

4413 Hamann Parkway - Hamann Industrial Park

22,523± SF Industrial/Warehouse Facility For Sale

Willoughby, Ohio 44094 (Lake County)



Contact:
David Sigg, CCIM, Broker
BRKP.2014005061
440-255-5552 x14 Office
440-668-3300 Cell
Sigg@GlobalCommercialRE.com



GLOBAL

Real Estate Advisors Inc.
Broker

www.GlobalCommercialRE.com

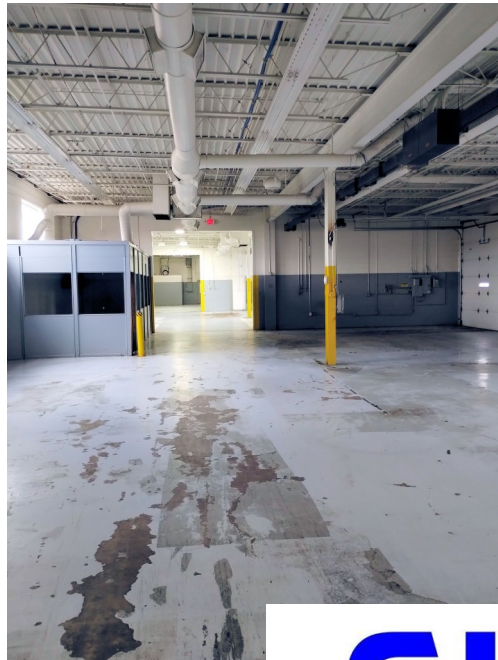
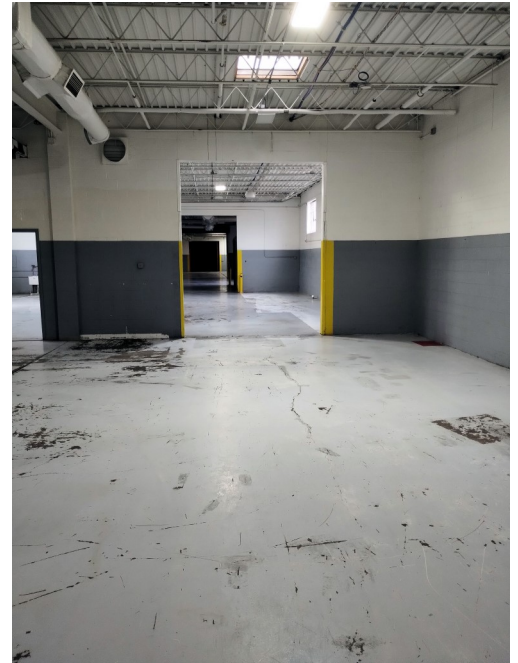
440-255-5552

This information has been secured from sources we believe are reliable, but we make no representations or warranties, expressed or implied, as to the accuracy of the information. References to condition, square footage or age are approximate. Buyer or Tenant acknowledges that they are relying on their own investigations and are not relying on Broker provided information. Procuring broker shall only be entitled to a commission, calculated in accordance with the rates approved by our principal only if such procuring broker executes a brokerage agreement acceptable to us and our principal and the conditions as set forth in the brokerage agreement are fully and unconditionally satisfied. Although all information furnished regarding property for sale, rental, or financing is from sources deemed reliable, such information has not been verified and no express representation is made nor is any to be implied as to the accuracy thereof and it is submitted subject to errors, omissions, change of price, rental or other conditions, prior sale, lease or financing, or withdrawal without notice and to any special conditions imposed by our principal.

4413 Hamann Parkway - *Hamann Industrial Park*

22,523± SF Industrial/Warehouse Facility For Sale

Willoughby, Ohio 44094 (Lake County)



Contact:

David Sigg, CCIM, Broker

BRKP.2014005061

440-255-5552 x14 Office

440-668-3300 Cell

Sigg@GlobalCommercialRE.com



GLOBAL

Real Estate Advisors Inc.
Broker

www.GlobalCommercialRE.com

440-255-5552

This information has been secured from sources we believe are reliable, but we make no representations or warranties, expressed or implied, as to the accuracy of the information. References to condition, square footage or age are approximate. Buyer or Tenant acknowledges that they are relying on their own investigations and are not relying on Broker provided information. Procuring broker shall only be entitled to a commission, calculated in accordance with the rates approved by our principal only if such procuring broker executes a brokerage agreement acceptable to us and our principal and the conditions as set forth in the brokerage agreement are fully and unconditionally satisfied. Although all information furnished regarding property for sale, rental, or financing is from sources deemed reliable, such information has not been verified and no express representation is made nor is any to be implied as to the accuracy thereof and it is submitted subject to errors, omissions, change of price, rental or other conditions, prior sale, lease or financing, or withdrawal without notice and to any special conditions imposed by our principal.

4413 Hamann Parkway - Hamann Industrial Park

22,523± SF Industrial/Warehouse Facility For Sale

Willoughby, Ohio 44094 (Lake County)



Contact:
David Sigg, CCIM, Broker
BRKP.2014005061
440-255-5552 x14 Office
440-668-3300 Cell
Sigg@GlobalCommercialRE.com



GLOBAL

Real Estate Advisors Inc.
Broker
www.GlobalCommercialRE.com

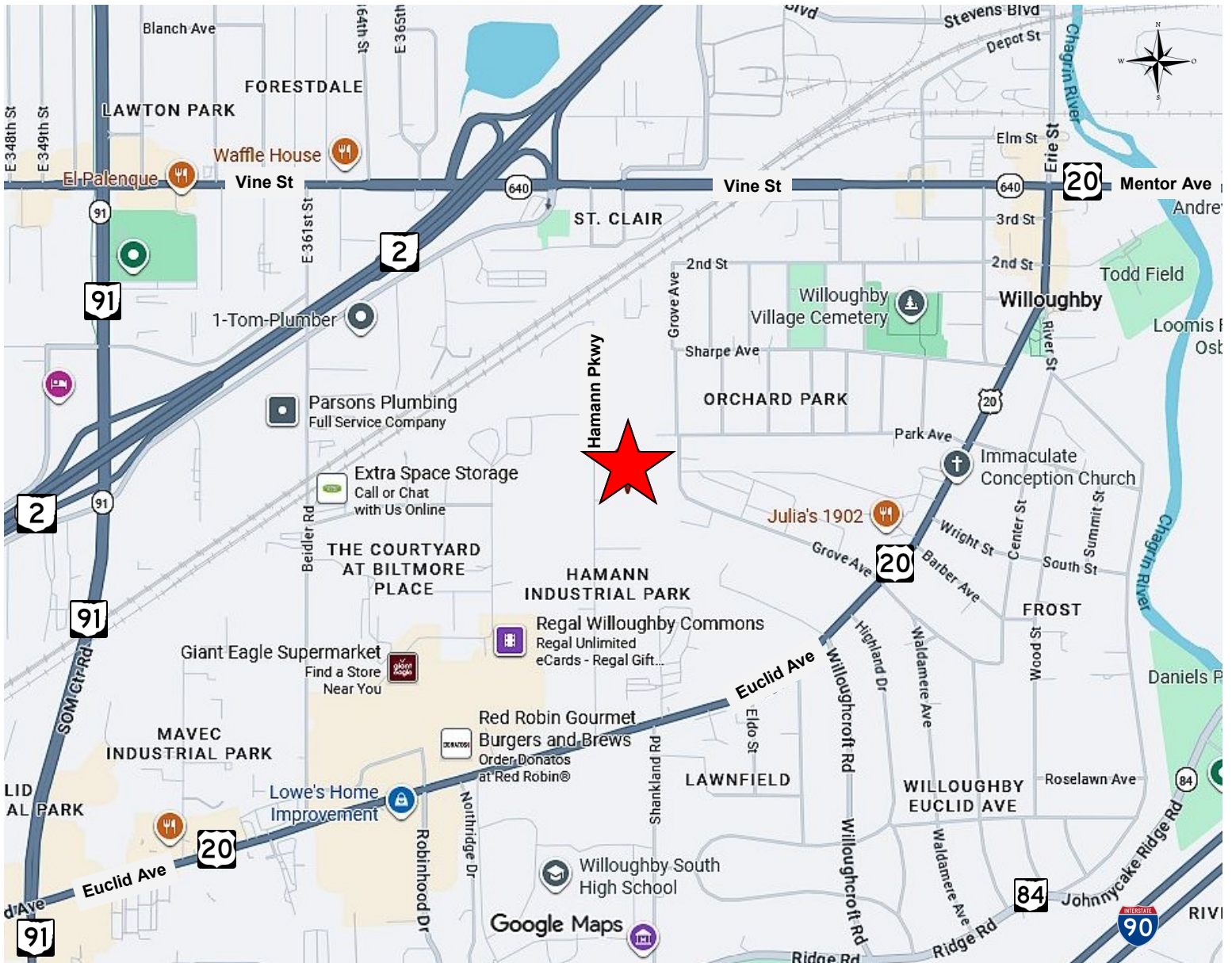
440-255-5552

This information has been secured from sources we believe are reliable, but we make no representations or warranties, expressed or implied, as to the accuracy of the information. References to condition, square footage or age are approximate. Buyer or Tenant acknowledges that they are relying on their own investigations and are not relying on Broker provided information. Procuring broker shall only be entitled to a commission, calculated in accordance with the rates approved by our principal only if such procuring broker executes a brokerage agreement acceptable to us and our principal and the conditions as set forth in the brokerage agreement are fully and unconditionally satisfied. Although all information furnished regarding property for sale, rental, or financing is from sources deemed reliable, such information has not been verified and no express representation is made nor is any to be implied as to the accuracy thereof and it is submitted subject to errors, omissions, change of price, rental or other conditions, prior sale, lease or financing, or withdrawal without notice and to any special conditions imposed by our principal.

4413 Hamann Parkway - Hamann Industrial Park

22,523± SF Industrial/Warehouse Facility For Sale

Willoughby, Ohio 44094 (Lake County)



Contact:

David Sigg, CCIM, Broker

BRKP.2014005061

440-255-5552 x14 Office

440-668-3300 Cell

Sigg@GlobalCommercialRE.com



GLOBAL

Real Estate Advisors Inc.
Broker

www.GlobalCommercialRE.com

440-255-5552

This information has been secured from sources we believe are reliable, but we make no representations or warranties, expressed or implied, as to the accuracy of the information. References to condition, square footage or age are approximate. Buyer or Tenant acknowledges that they are relying on their own investigations and are not relying on Broker provided information. Procuring broker shall only be entitled to a commission, calculated in accordance with the rates approved by our principal only if such procuring broker executes a brokerage agreement acceptable to us and our principal and the conditions as set forth in the brokerage agreement are fully and unconditionally satisfied. Although all information furnished regarding property for sale, rental, or financing is from sources deemed reliable, such information has not been verified and no express representation is made nor is any to be implied as to the accuracy thereof and it is submitted subject to errors, omissions, change of price, rental or other conditions, prior sale, lease or financing, or withdrawal without notice and to any special conditions imposed by our principal.