

# FOR LEASE

**2440 Lacy Lane** | Carrollton, Texas 75006



2440 LACY LANE, SUITE 100  
**±2,926 SF**

## AVAILABILITY HIGHLIGHTS

- ±2,926 SF Total Available
- 65% Office
- 35% Warehouse
- 14' Clear Height
- 1 - 9' x 10' Grade Level Door
- Ample Car Parks (Double Row + Parking in the the Back)
- Fiber in Place (Spectrum)
- Excellent Valwood Location, Easy Access to SH-190, I-635 and I-35



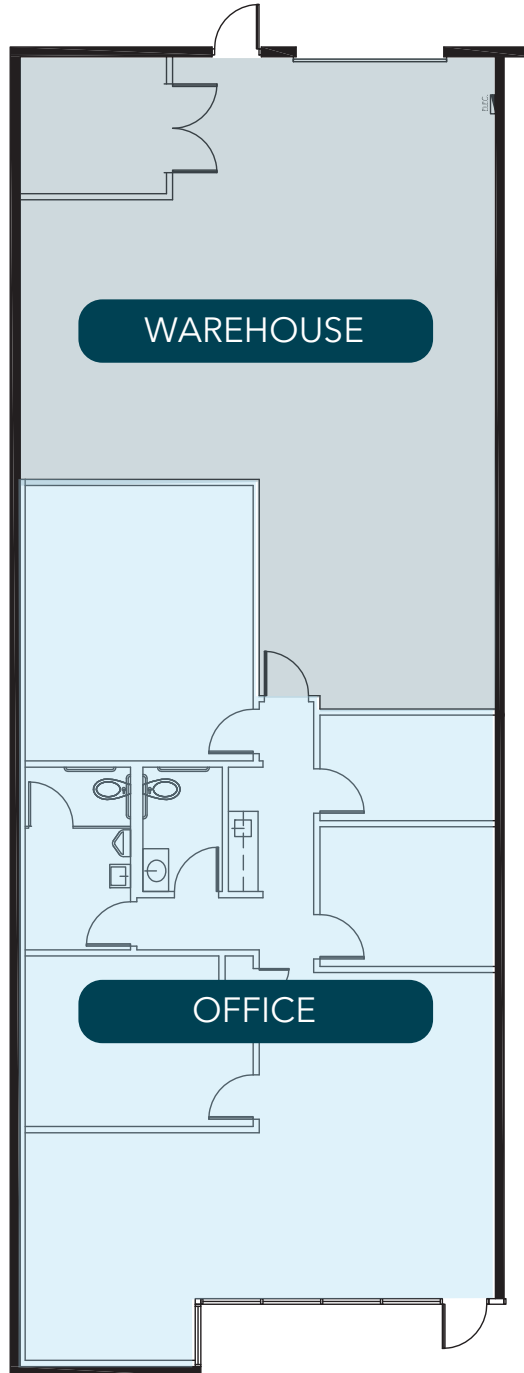
FOR MORE INFORMATION:

**KEN WESSON, SIOR, CCIM**  
469.855.5222  
kwesson@lee-associates.com

**LEE & ASSOCIATES**  
COMMERCIAL REAL ESTATE SERVICES  
leedallas.com

SITE PLAN

**SUITE 100**  
*±2,926 SF TOTAL AVAILABLE*



All information furnished regarding property for sale, rental or financing is from sources deemed reliable, but no warranty or representation is made to the accuracy thereof and same is submitted to errors, omissions, change of price, rental or other conditions prior to sale, lease or financing or withdrawal without notice. No liability of any kind is to be imposed on the broker herein.

FOR MORE INFORMATION:

**KEN WESSON, SIOR, CCIM**  
469.855.5222  
kwesson@lee-associates.com