



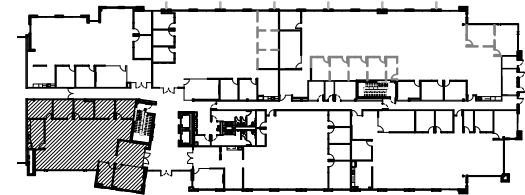
# THE RESERVE

AT SAN TAN

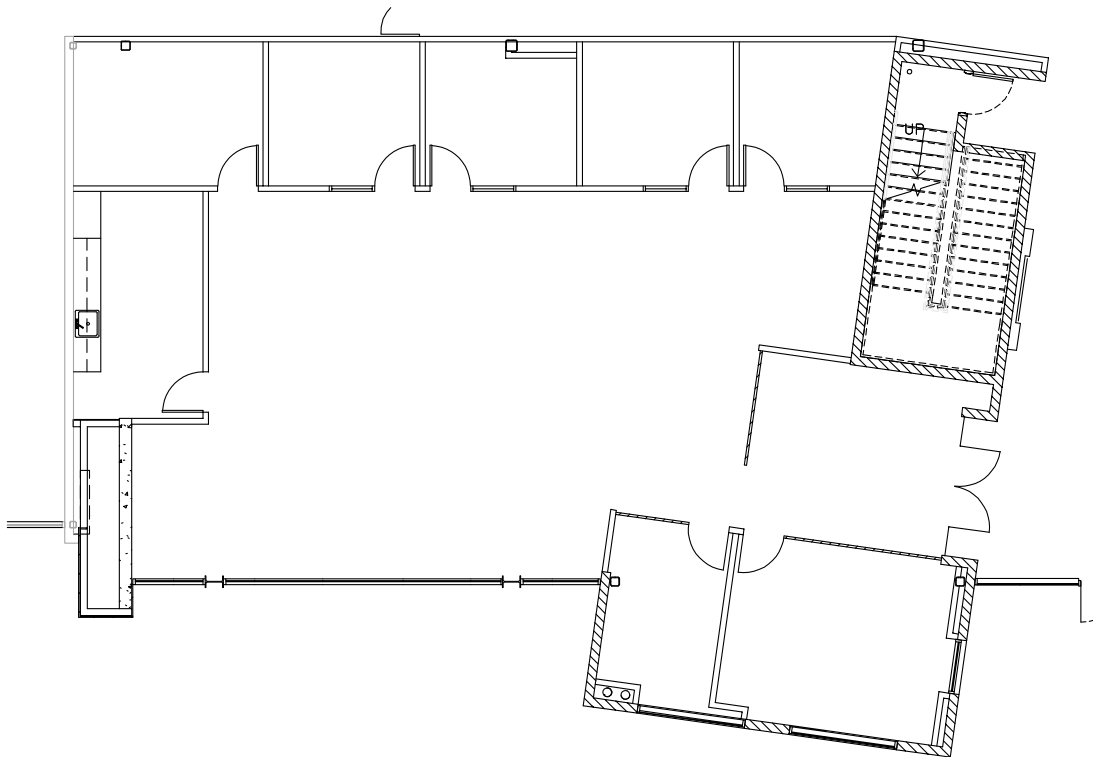
355 & 365 EAST GERMANN ROAD

365 | SUITE 180

±3,128 SF



KEY MAP



- 5 OFFICES
- 2 CONFERENCE ROOMS
- OPEN AREA
- KITCHEN/BREAK AREA
- EXPOSED CEILING LOBBY AND BULLPEN
- FIRST FLOOR LOBBY EXPOSURE

**NEWMARK**

The information contained herein has been obtained from sources deemed reliable but has not been verified and no guarantee, warranty or representation, either express or implied, is made with respect to such information. Terms of sale or lease and availability are subject to change or withdrawal without notice.

**MIKE GARLICK, SIOR**  
Executive Managing Director  
t 602-952-3825  
mike.garlick@nmrk.com

**PATRICK DEVINE**  
Senior Managing Director  
t 602-952-3859  
patrick.devine@nmrk.com