

OFFICE SPACE  
OCCUPANCY ANALYSIS

TOTAL AREA = 3180 SQ. FT.

OCCUPANCY TYPE = B

OLF = 150

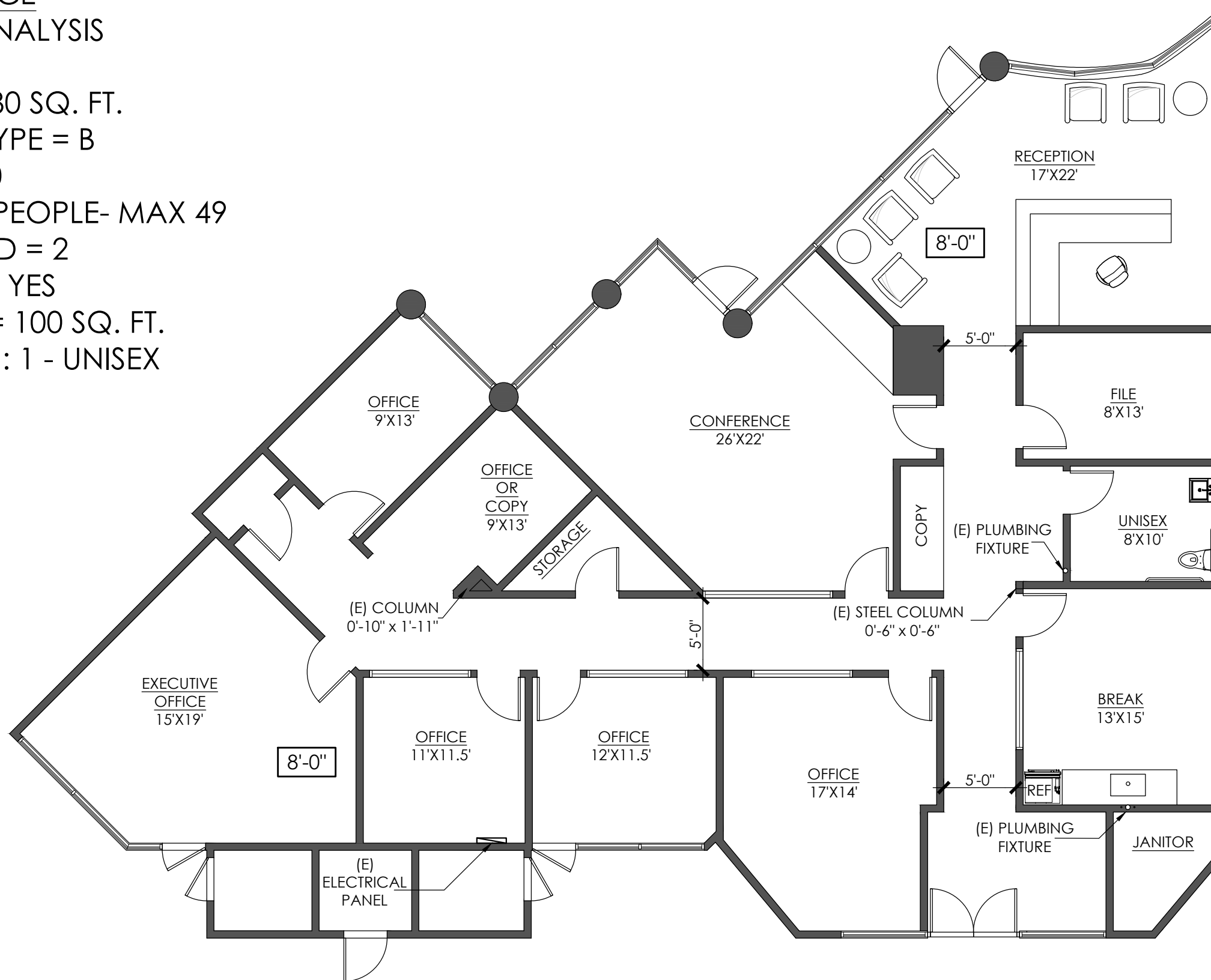
MAX OCCUPANCY = 22 PEOPLE- MAX 49

EXITS REQUIRED = 2

SPRINKLERS = YES

MAX. TRAVEL AREA = 100 SQ. FT.

NO. OF RESTROOMS : 1 - UNISEX



SCALE: 1/8" = 1'-0"

MEDICAL PRIVATE OFFICE  
OCCUPANCY ANALYSIS

TOTAL AREA = 3180 SQ. FT.

OCCUPANCY TYPE = B

OLF = 150

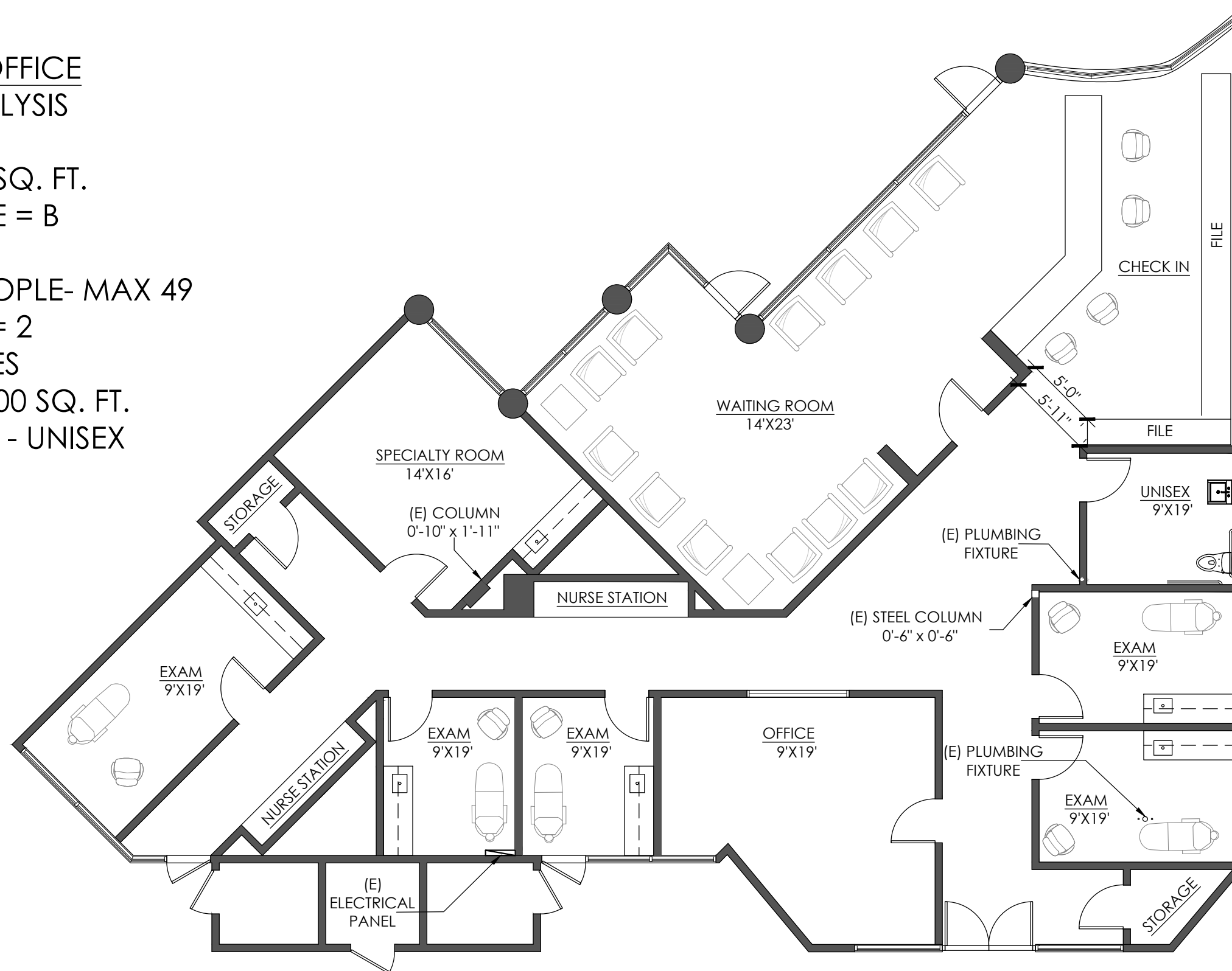
MAX OCCUPANCY = 22 PEOPLE- MAX 49

EXITS REQUIRED = 2

SPRINKLERS = YES

MAX. TRAVEL AREA = 100 SQ. FT.

NO. OF RESTROOMS : 1 - UNISEX



SCALE: 1/8" = 1'-0"