

Freestanding Retail

1605 W Magnolia Blvd, Burbank, CA 91506



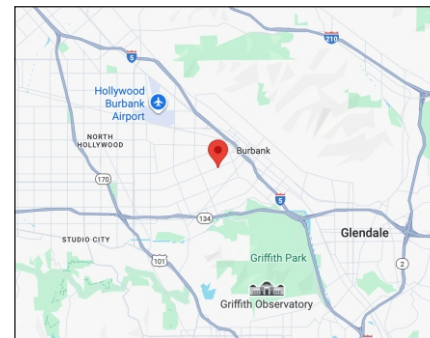
Property Details:

- Building Size: 1, 500 sf
- Lot Size: 2,625 sf
- Built in 1942
- BUC3YY - City of Burbank Master Plan
- APN: 2449-029-012
- Parking: 3 spaces, plenty of street parking
- Ideal for owner user occupying 90%. SBA financing available

Property Details:

- Central location close to downtown Burbank, Burbank Town Center, Burbank Empire Center and near Burbank's Magnolia Park
- Easy access to the 5 freeway

ASKING: \$1,300,000



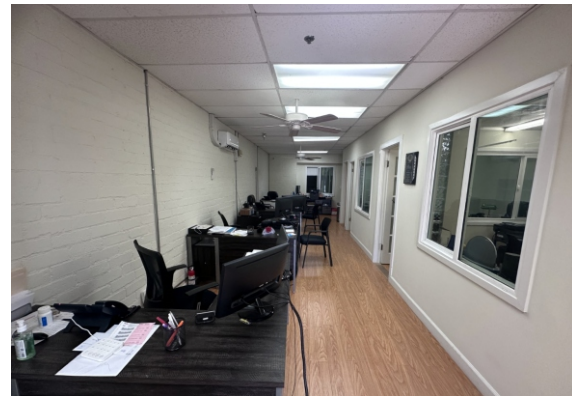
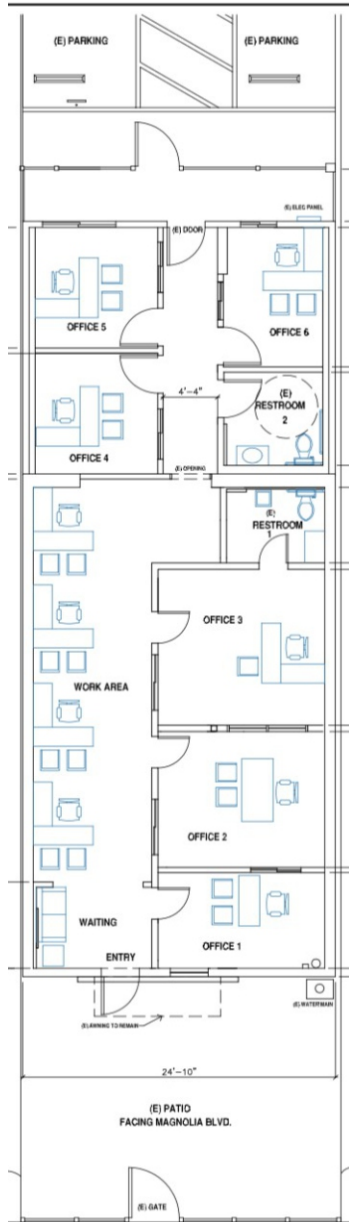
Ryan Oh
(213) 804-7548
roh@cbwilshire.com
BRE 01082638

Coldwell Banker Commercial Wilshire Properties
3731 Wilshire Blvd, Ste 820, Los Angeles, CA 90010
T (213) 6371112 F (213) 63711 13
BRE 01936489



Freestanding Retail

1605 W Magnolia Blvd, Burbank, CA 91506



Coldwell Banker Commercial Wilshire Properties have obtained the information in this brochure from sources that they believe to be reliable. However, they have not verified its accuracy and make no guarantee, warranty or representation about it. It is submitted subject to the possibility of errors, omissions, change of price, rental or other conditions, prior sale, lease or financing, or withdrawal without notice. Coldwell Banker Commercial Wilshire Properties has included projections, opinions, assumptions or estimates for example only, and they may not represent current or future performance of the property. You and your tax and legal advisors should conduct your own investigation of the property and transaction.