

# THE COTTON MILL

## SUITE 300

Second generation space  
located on the second floor.



RENTABLE SQUARE FOOTAGE:  
3,268

PRICE PER SQUARE FOOT:  
\$28-30 + E AND J

PARKING RATIO:  
5.1:1000 WITH PLANS TO ADD  
MORE



# AMENITIES

Fiber Cabling for Internet.

Conference room

Brand new kitchen

3 Private Offices

Floors have unique hard wood finish that match the historic aspects of the entire building

Space is located on the second floor next to the Grand Hallway which contains unique art as well as comfortable seating for personal/business use

Operating Event Hall for business/celebratory needs

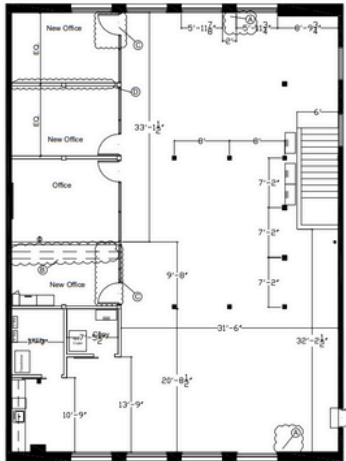
Building is located 1 mile south of downtown McKinney

Glass entry

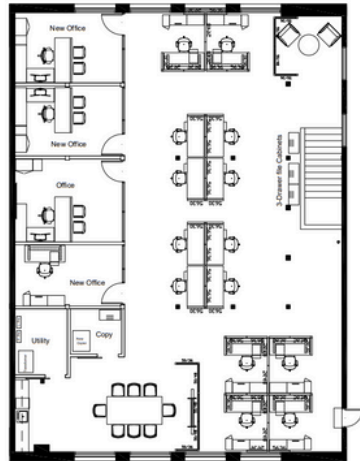
Coffee shop on site

Common area garden with seating for tenant use

North and South facing natural light



THE COTTON MILL SUITE 300



THE COTTON MILL SUITE 300



# CONTACT INFORMATION



## McCall Casey



214-300-5456



[mckinneycottonmill.com](http://mckinneycottonmill.com)



McCall@mckinneycottonmill.com



610 Elm Street,  
Mckinney Texas



## Chandler Casey



214-500-9762



[mckinneycottonmill.com](http://mckinneycottonmill.com)



chandler@mckinneycottonmill.com



610 Elm Street,  
Mckinney Texas