

OFFICE FOR LEASE

745 Craig Rd.
Creve Coeur, MO 63141

SKYLINE
COMMERCIAL REAL ESTATE

207 - 1,600 SF available
Lease Rate: \$20/psf MG

PROPERTY DETAILS

- Referrals will receive \$500 rent credit
- Convenient amenity-rich Creve Coeur location
- Free WiFi
- Newly updated common areas and restrooms
- Flexible lease terms



2024 DEMOGRAPHICS

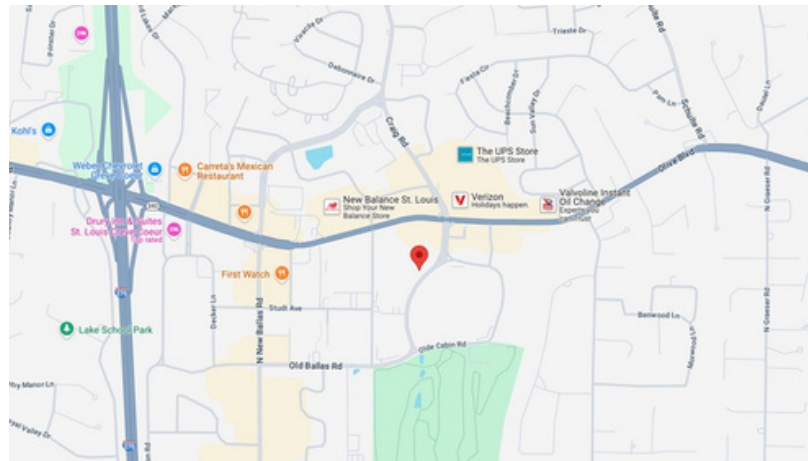
1 Mile | 3 Miles | 5 Miles

Population

8,760 | 60,264 | 168,531

Median Household Income

\$108,777 | \$115,736 | \$108,279



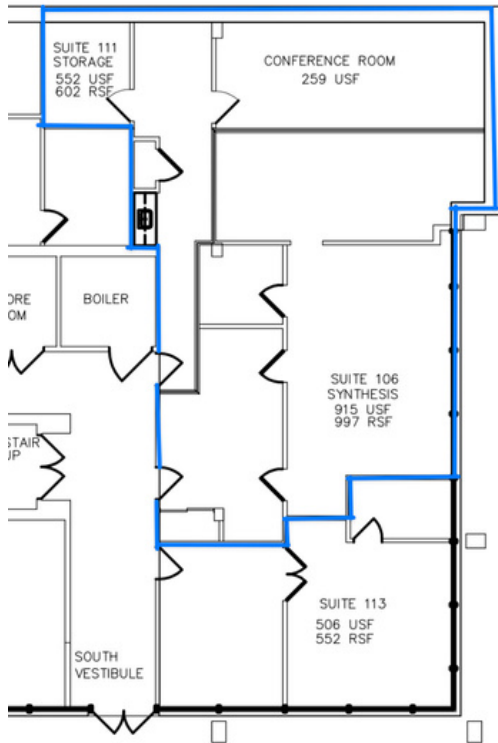
CONTACT

Luke Grant
314-602-3008
Luke@skylinemore.com

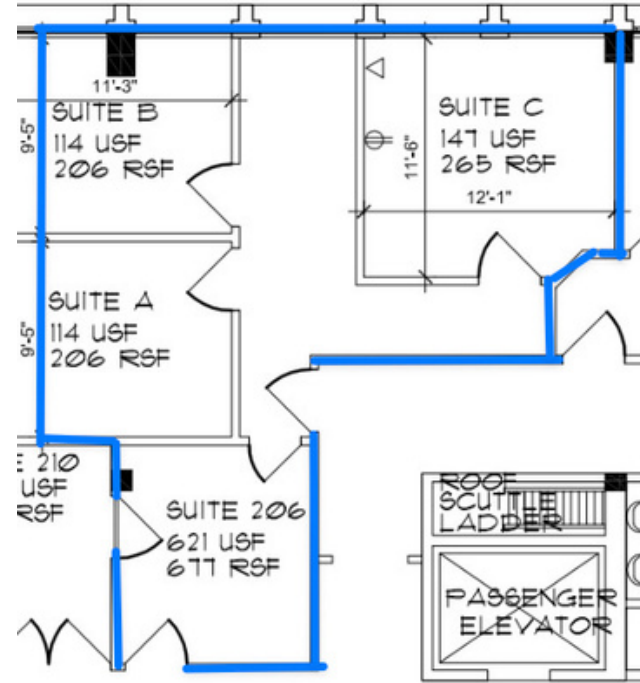
Jason Riegelsberger
314-974-0698
Jason@skylinemore.com

FLOOR PLANS

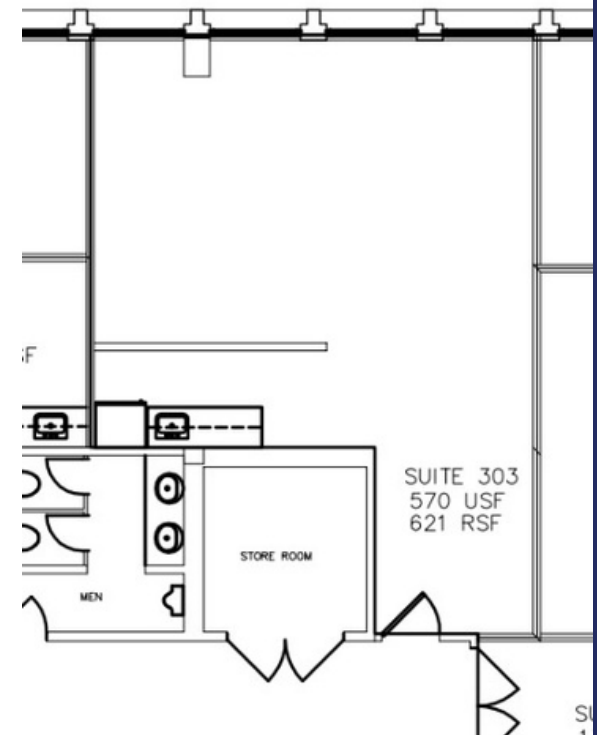
Suite 106
1,600 RSF



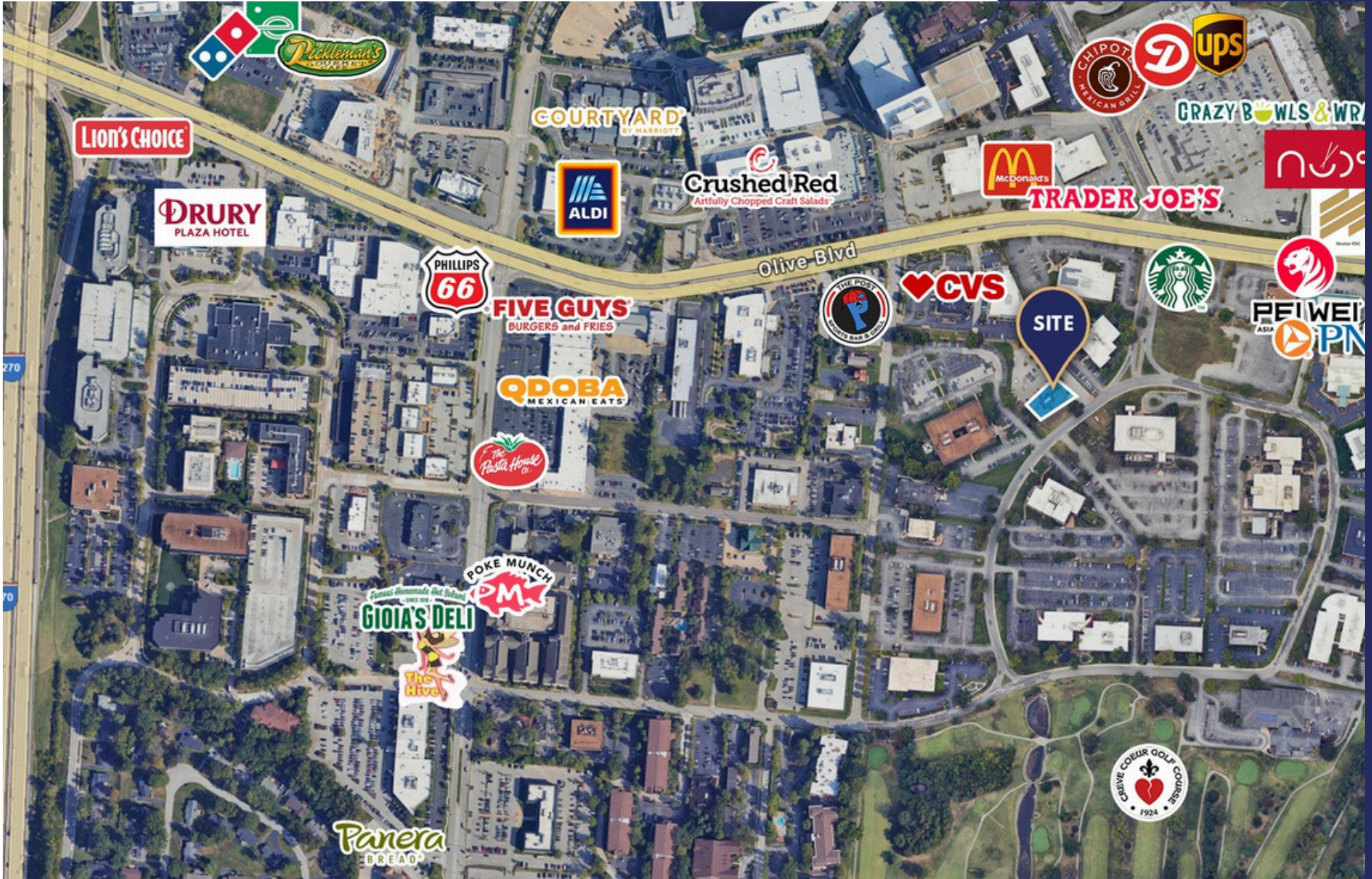
Suite 206
677 RSF



Suite 303
621 RSF



TRADE AREA AERIAL



PROPERTY PHOTOS

