

PASADENA STREET INDUSTRIAL PARK

18510 PASADENA STREET, LAKE ELSINORE, CALIFORNIA 92530

INDUSTRIAL SPACE
FOR LEASE



FOR MORE INFORMATION, PLEASE CONTACT:

CAREY PASTOR | Senior Vice President

(951) 297-7434 | cpastor@cbcsocalgroup.com

CalDRE License # 01403298

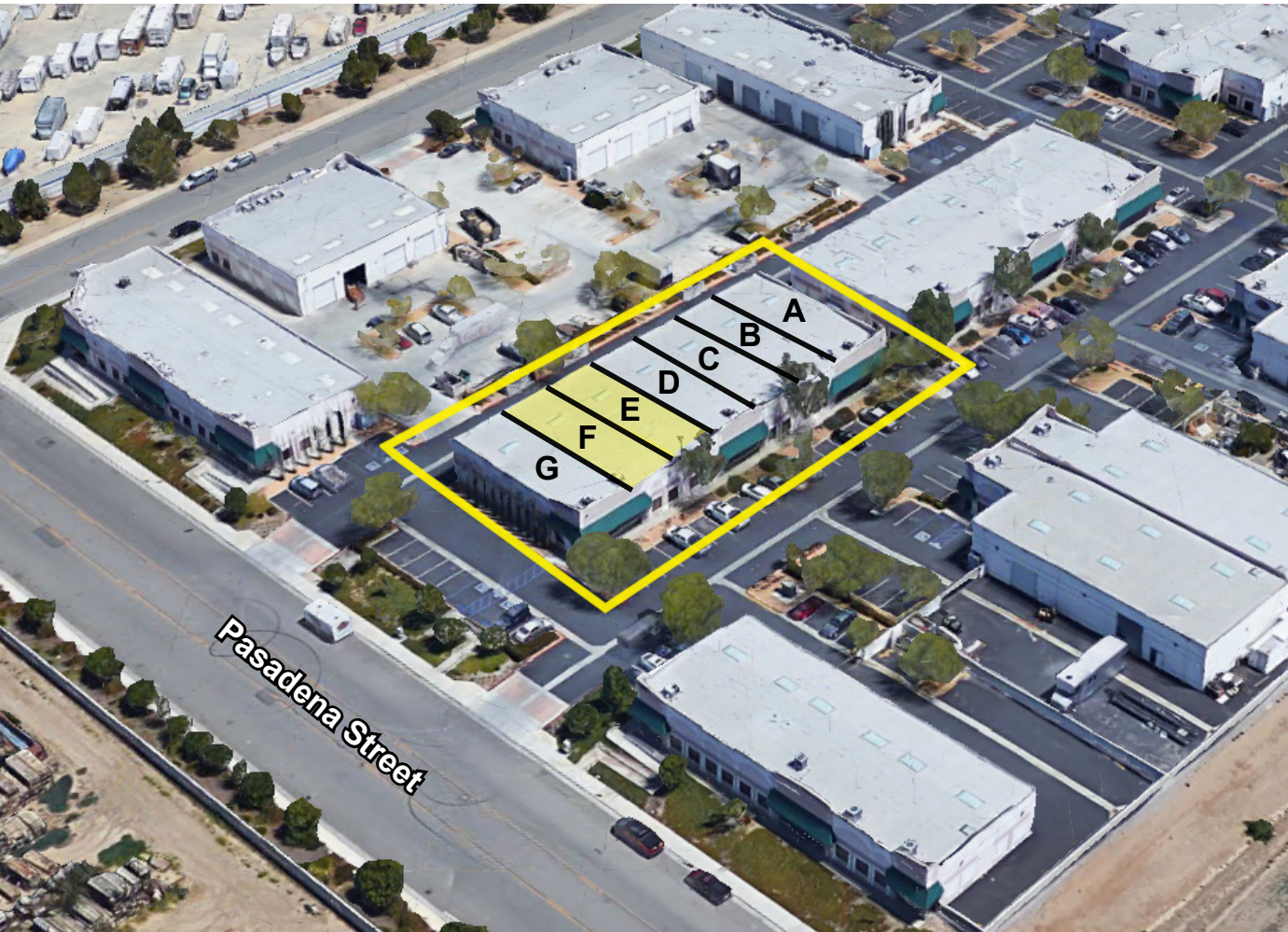


COLDWELL BANKER
COMMERCIAL
SC

PASADENA STREET INDUSTRIAL PARK

18510 PASADENA STREET, LAKE ELSINORE, CALIFORNIA 92530

INDUSTRIAL SPACE
FOR LEASE



PROPERTY HIGHLIGHTS

- Industrial Space For Lease ranging from +/- 1,510 SF - +/-1,793 SF
- Office Improvements Include: reception, private office and restroom
- Warehouse amenities include: 16' clear height, 12'w x 12'h rear loading roll-up door, a main door, lighting, skylights and 200 Amp, 210/208v 3 phase power supply
- Close proximity to I-15 freeway at Central Avenue
- Retail and restaurant amenities nearby including: Lowe's The Home Depot, Costco, Target, Chili's, Starbucks

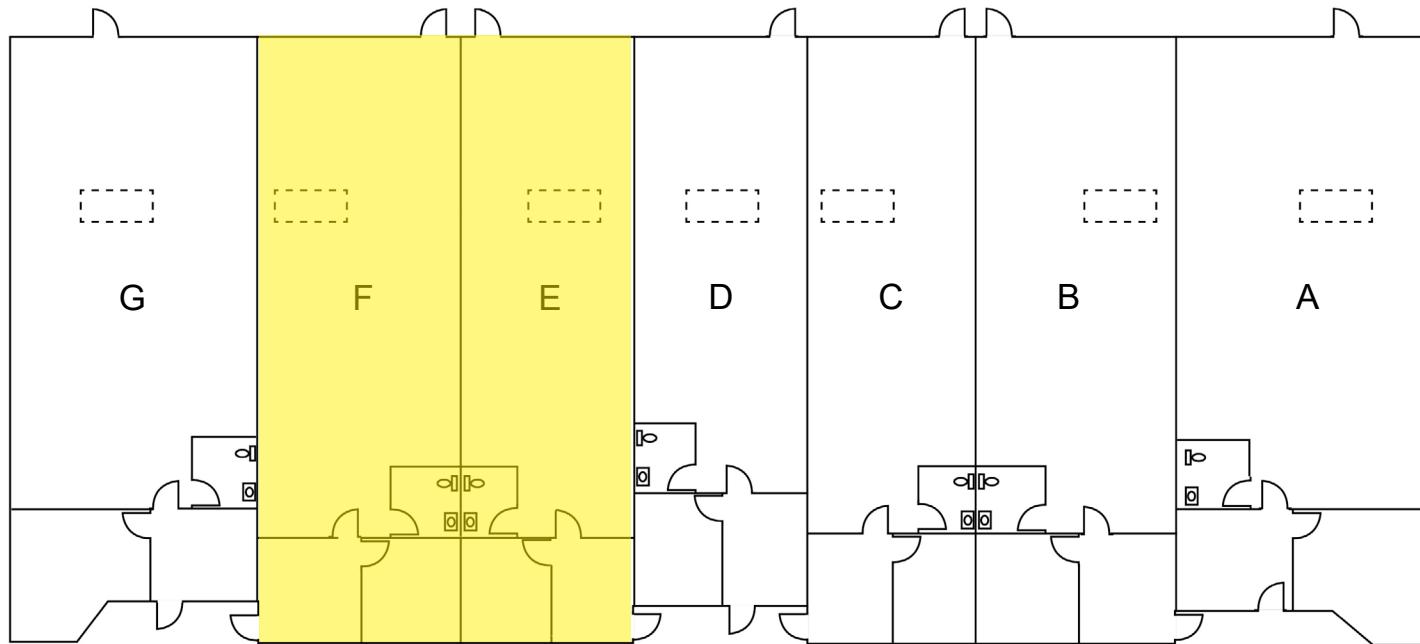
PASADENA STREET INDUSTRIAL PARK

18510 PASADENA STREET, LAKE ELSINORE, CALIFORNIA 92530

INDUSTRIAL SPACE
FOR LEASE

SITE PLAN / FLOOR PLAN

UNIT	UNIT SIZE	LEASE RATE	DESCRIPTION
E	±1,510 SF	\$2,265.00 per month	Reception area, 1 private office, restroom, and warehouse with 12 x 12 GL rear loading roll-up door.
F	±1,793 SF	\$2,690.00 per month	Reception area, 1 private office, restroom, and warehouse with 12 x 12 GL rear loading roll-up door.



Coldwell Banker Commercial and the Coldwell Banker Commercial Logo are registered service marks licensed to Coldwell Banker Commercial Affiliates. Each Office is Independently Owned and Operated. All information contained herein has been obtained from sources deemed reliable. However, no warranty or guarantee is made as to the accuracy of the information.

CalDRE License # 02089395

PASADENA STREET INDUSTRIAL PARK

18510 PASADENA STREET, LAKE ELSINORE, CALIFORNIA 92530

INDUSTRIAL SPACE
FOR LEASE



**PASADENA STREET
INDUSTRIAL PARK**

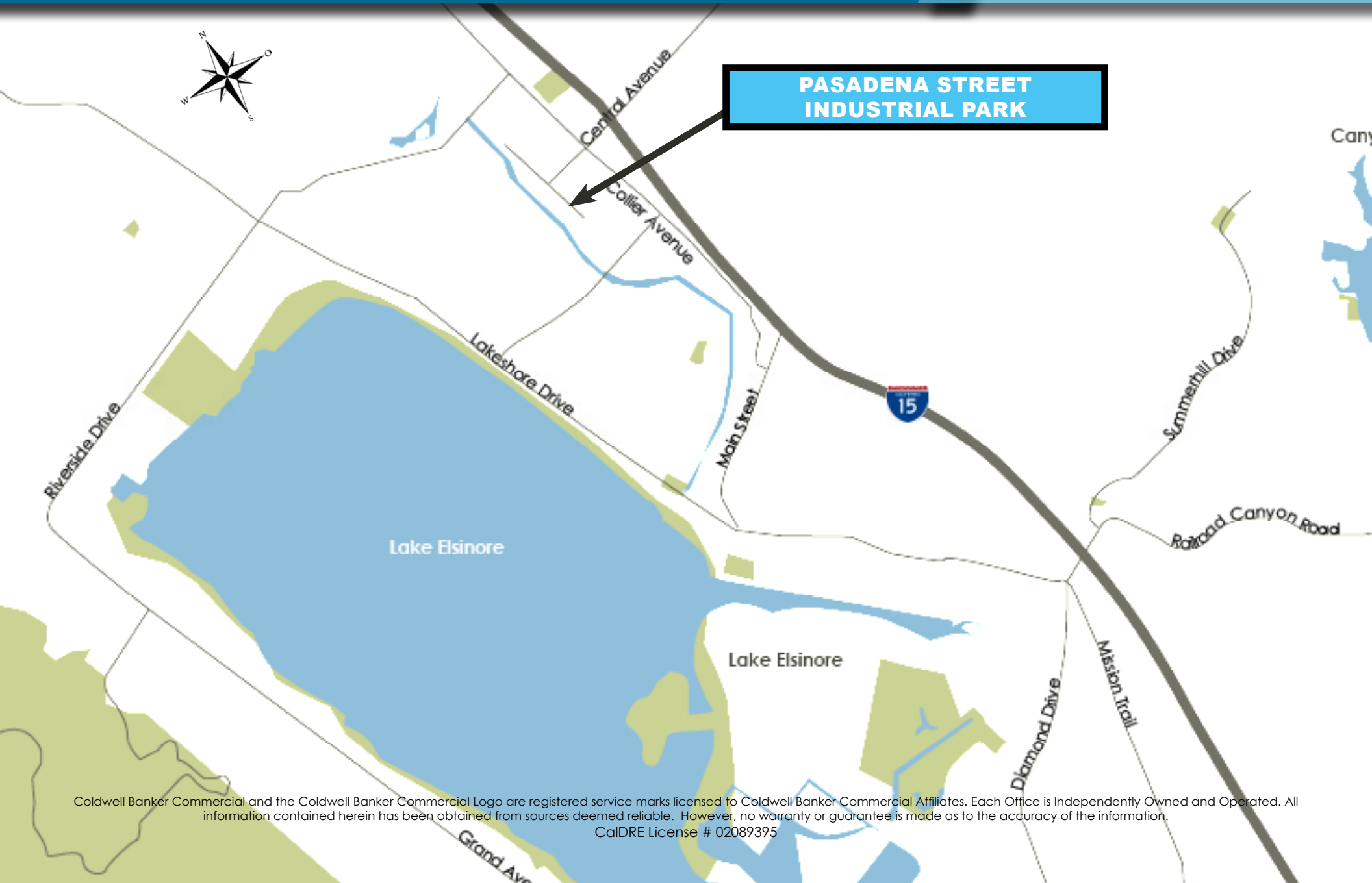
Coldwell Banker Commercial and the Coldwell Banker Commercial Logo are registered service marks licensed to Coldwell Banker Commercial Affiliates. Each Office is Independently Owned and Operated. All information contained herein has been obtained from sources deemed reliable. However, no warranty or guarantee is made as to the accuracy of the information.

CalDRE License # 02089395

PASADENA STREET INDUSTRIAL PARK

18510 PASADENA STREET, LAKE ELSINORE, CALIFORNIA 92530

INDUSTRIAL SPACE
FOR LEASE



Coldwell Banker Commercial and the Coldwell Banker Commercial Logo are registered service marks licensed to Coldwell Banker Commercial Affiliates. Each Office is Independently Owned and Operated. All information contained herein has been obtained from sources deemed reliable. However, no warranty or guarantee is made as to the accuracy of the information.

CalDRE License # 02089395

PASADENA STREET INDUSTRIAL PARK

18510 PASADENA STREET, LAKE ELSINORE, CALIFORNIA 92530

INDUSTRIAL SPACE
FOR LEASE



FOR MORE INFORMATION, PLEASE CONTACT:

CAREY PASTOR

Senior Vice President

951.297.7434

cpastor@cbsocalgroup.com

CalDRE # 01403298

27368 Via Industria | Suite 102

Temecula | California | 92590

t 951.200.7683 | f 951.239.3147

cbsocalgroup.com



**COLDWELL BANKER
COMMERCIAL**

SC