

715 N. HUDSON AVENUE
OKLAHOMA CITY, OK 73102



Office Space For Lease

Suite C: 3,290 SF

Lease Price: \$3,500/Month Modified Gross

NAIRED COMMERCIAL
REAL ESTATE

405.840.0600 | NAIRED.COM

ABBIEY SULLIVAN
405.863.7590
ABBIEY@NAIRED.COM



PROPERTY OVERVIEW

TOTAL SF	19,968 SF
LOT SIZE	0.72 ACRE +/-
YEAR BUILT	1924
ZONING	DBD

- Open Floor Plan with Two Large Offices
- Restrooms and Kitchenette in Suite
- 5 Designated Parking Spots Available
- Midtown Walkability
- 2nd Floor Space with Elevator & Stairs Access
- Minutes from Downtown OKC, Automobile Alley, the Innovation District, and OU Health Sciences Center
- Active Redevelopment and Investment Area

DEMOGRAPHICS



POPULATION
1 MILE: 10,934
3 MILES: 80,868
5 MILES: 212,833



AVERAGE HOUSEHOLD INCOME
1 MILE: \$85,397
3 MILES: \$65,736
5 MILES: \$61,287

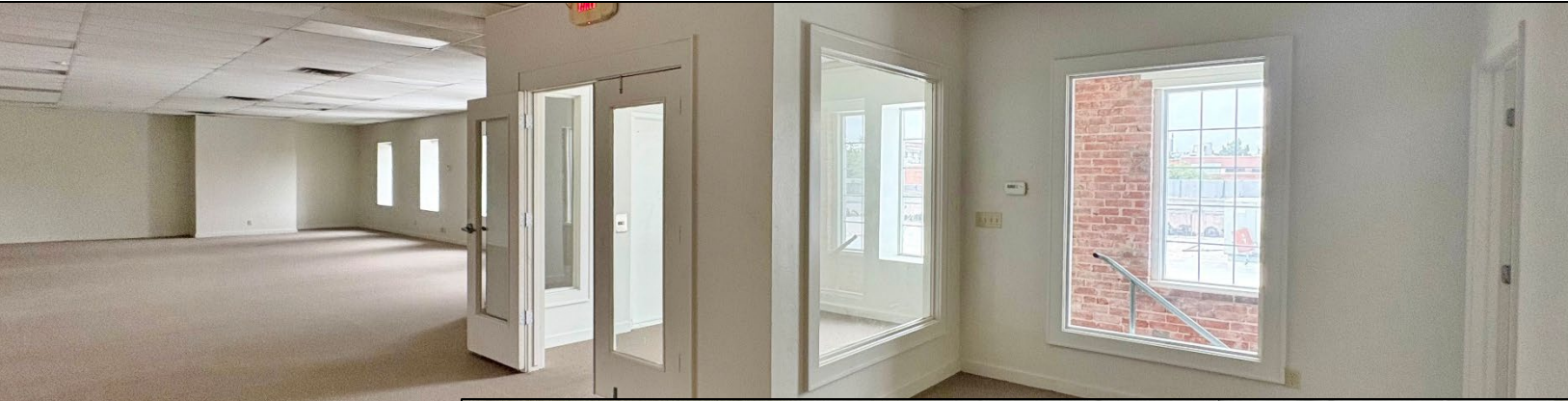


TOTAL HOUSEHOLDS
1 MILE: 5,891
3 MILES: 35,586
5 MILES: 61,279



- 0.60 MILES FROM I-235
- 1.2 MILES FROM I-40
- 1.8 MILES FROM I-35

715 N. HUDSON AVENUE



715 N. HUDSON AVENUE AERIAL

