

1,200 - 2,624 SF
RETAIL



FOR LEASE



1472-1488 South Lapeer Road

Lake Orion, Michigan 48360

Property Highlights

- \$20.00 PSF NNN
- 2,624 SF fully built out former coffee shop
- 1,200 SF white box
- 2,097 SF end cap available summer 2026
- Located Adjacent to Chicago Brothers Pizza
- Prime Location located on Lapeer Road
- Ample Parking
- 2026 Expansion Plan includes 1,434 SF and 1,454 SF

OFFERING SUMMARY

Lease Rate:	\$20.00 SF/yr (NNN)
Available SF:	1,200 - 2,624 SF
Building Size:	6,175 SF

DEMOGRAPHICS

	1 MILE	3 MILES	5 MILES
Total Households	1,558	10,422	27,580
Total Population	3,982	27,457	74,181
Average HH Income	\$115,458	\$145,000	\$157,746



Commercial Real Estate Services, Worldwide.

www.naifarberman.com

Brandon Ben-Ezra

Leasing and Sales Associate | 947.517.6226
ben-ezra@farberman.com

Gavin Mills

Leasing and Sales Associate | 908.304.4534
mills@farberman.com

NO WARRANTY, EXPRESS OR IMPLIED, IS MADE AS TO THE ACCURACY OF THE INFORMATION CONTAINED HEREIN. THIS INFORMATION IS SUBMITTED SUBJECT TO ERRORS, OMISSIONS, CHANGE OF PRICE, RENTAL OR OTHER CONDITIONS, WITHDRAWAL WITHOUT NOTICE, AND IS SUBJECT TO ANY SPECIAL LISTING CONDITIONS IMPOSED BY OUR PRINCIPALS, COOPERATING BROKERS, BUYERS, TENANTS AND OTHER PARTIES WHO RECEIVE THIS DOCUMENT SHOULD NOT RELY ON IT, BUT SHOULD USE IT AS A STARTING POINT OF ANALYSIS, AND SHOULD INDEPENDENTLY CONFIRM THE ACCURACY OF THE INFORMATION CONTAINED HEREIN THROUGH A DUE DILIGENCE REVIEW OF THE BOOKS, RECORDS, FILES AND DOCUMENTS THAT CONSTITUTE RELIABLE SOURCES OF THE INFORMATION DESCRIBED HEREIN. LOGOS ARE FOR IDENTIFICATION PURPOSES ONLY AND MAY BE TRADEMARKS OF THEIR RESPECTIVE COMPANIES. NAI Farberman, INC. CA BRE LIC. #01990696.

1,200 - 2,624 SF
RETAIL



FOR LEASE



Exterior



Interior



Interior



Rendering



Rendering



Rendering

NAI Farbman
Commercial Real Estate Services, Worldwide.

www.naifarbman.com

Brandon Ben-Ezra
Leasing and Sales Associate | 947.517.6226
ben-ezra@farbman.com

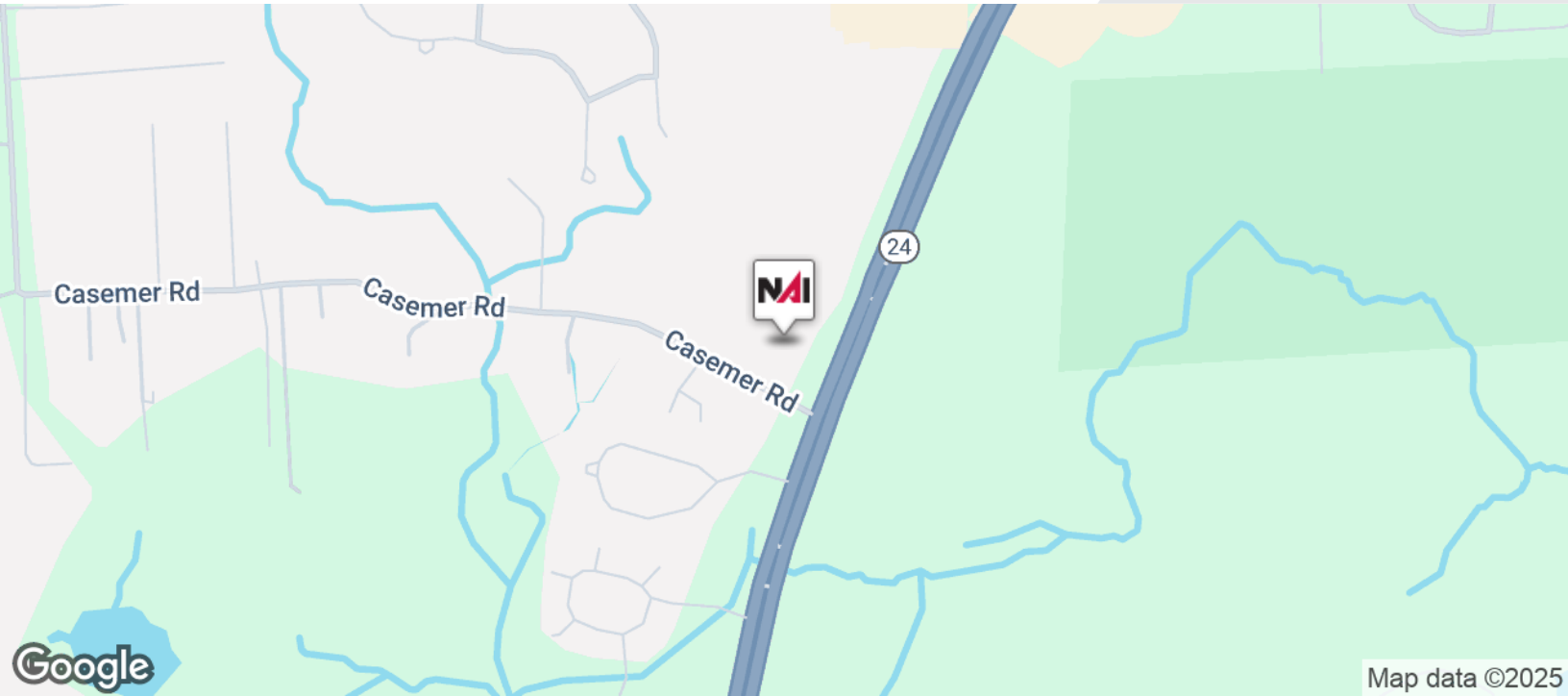
Gavin Mills
Leasing and Sales Associate | 908.304.4534
mills@farbman.com

NO WARRANTY, EXPRESS OR IMPLIED, IS MADE AS TO THE ACCURACY OF THE INFORMATION CONTAINED HEREIN. THIS INFORMATION IS SUBMITTED SUBJECT TO ERRORS, OMISSIONS, CHANGE OF PRICE, RENTAL OR OTHER CONDITIONS, WITHDRAWAL WITHOUT NOTICE, AND IS SUBJECT TO ANY SPECIAL LISTING CONDITIONS IMPOSED BY OUR PRINCIPALS, COOPERATING BROKERS, BUYERS, TENANTS AND OTHER PARTIES WHO RECEIVE THIS DOCUMENT SHOULD NOT RELY ON IT, BUT SHOULD USE IT AS A STARTING POINT OF ANALYSIS, AND SHOULD INDEPENDENTLY CONFIRM THE ACCURACY OF THE INFORMATION CONTAINED HEREIN THROUGH A DUE DILIGENCE REVIEW OF THE BOOKS, RECORDS, FILES AND DOCUMENTS THAT CONSTITUTE RELIABLE SOURCES OF THE INFORMATION DESCRIBED HEREIN. LOGOS ARE FOR IDENTIFICATION PURPOSES ONLY AND MAY BE TRADEMARKS OF THEIR RESPECTIVE COMPANIES. NAI Farbman, INC. CA BRE LIC. #01990696.

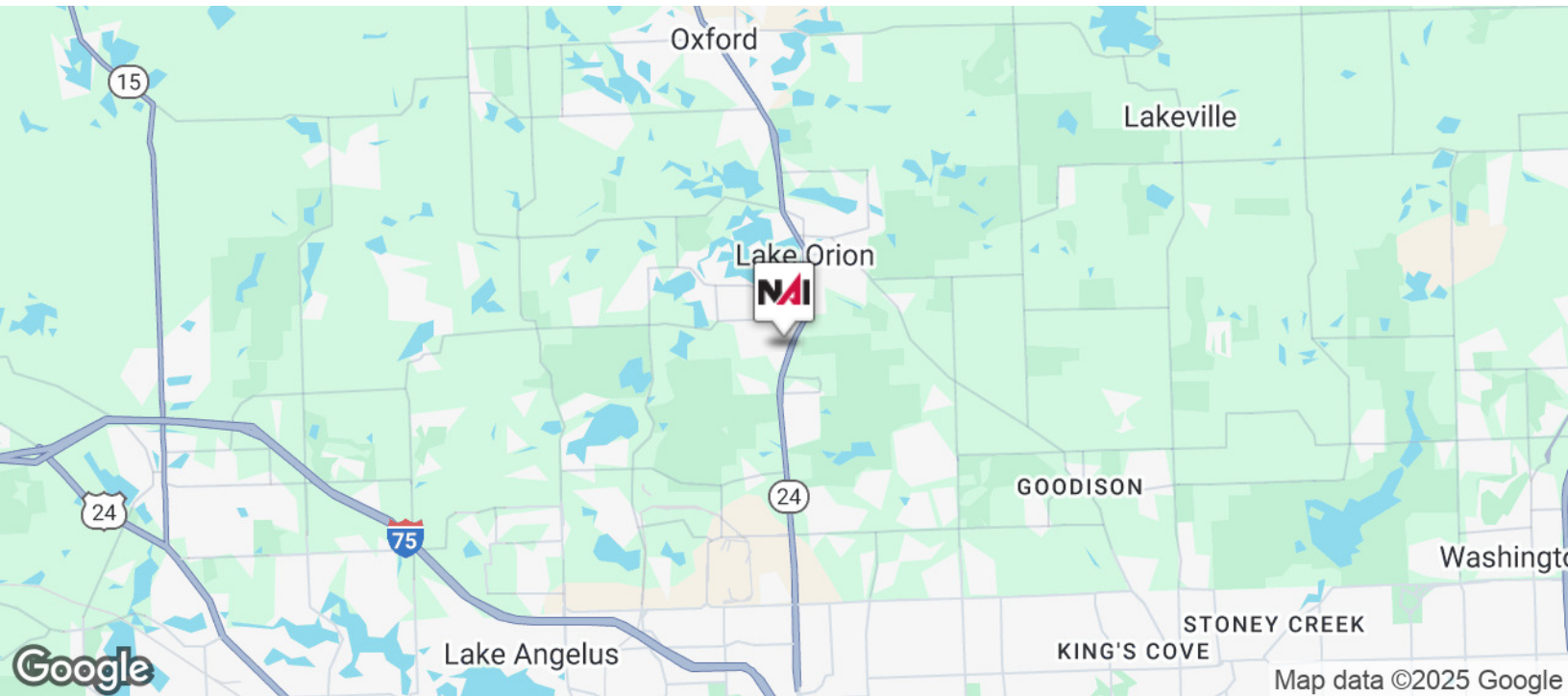
1,200 - 2,624 SF
RETAIL



FOR LEASE



Map data ©2025



Map data ©2025 Google



Commercial Real Estate Services, Worldwide.

www.naifarbman.com

Brandon Ben-Ezra

Leasing and Sales Associate | 947.517.6226
ben-ezra@farbman.com

Gavin Mills

Leasing and Sales Associate | 908.304.4534
mills@farbman.com

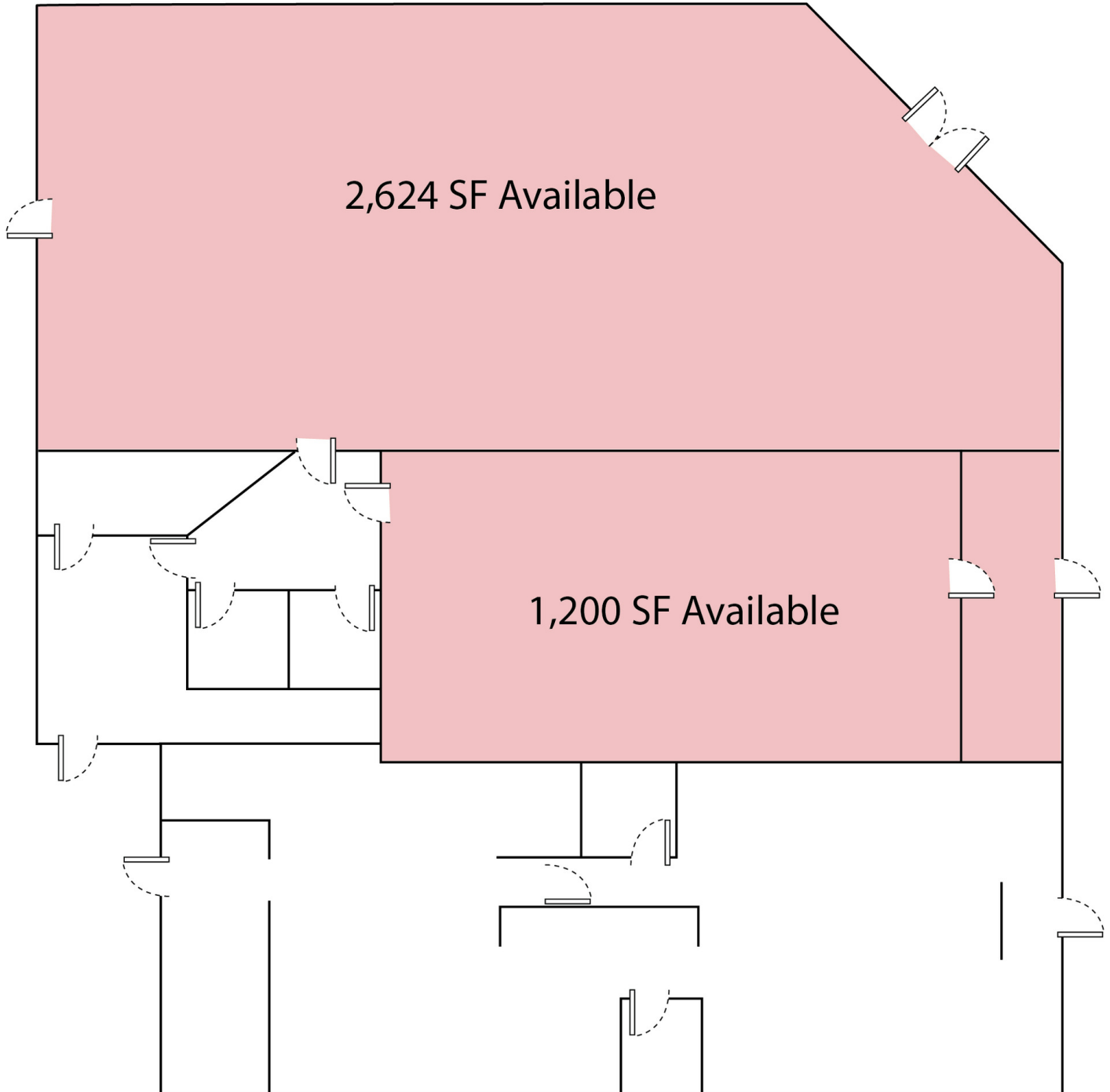
NO WARRANTY, EXPRESS OR IMPLIED, IS MADE AS TO THE ACCURACY OF THE INFORMATION CONTAINED HEREIN. THIS INFORMATION IS SUBMITTED SUBJECT TO ERRORS, OMISSIONS, CHANGE OF PRICE, RENTAL OR OTHER CONDITIONS, WITHDRAWAL WITHOUT NOTICE, AND IS SUBJECT TO ANY SPECIAL LISTING CONDITIONS IMPOSED BY OUR PRINCIPALS. COOPERATING BROKERS, BUYERS, TENANTS AND OTHER PARTIES WHO RECEIVE THIS DOCUMENT SHOULD NOT RELY ON IT, BUT SHOULD USE IT AS A STARTING POINT OF ANALYSIS, AND SHOULD INDEPENDENTLY CONFIRM THE ACCURACY OF THE INFORMATION CONTAINED HEREIN THROUGH A DUE DILIGENCE REVIEW OF THE BOOKS, RECORDS, FILES AND DOCUMENTS THAT CONSTITUTE RELIABLE SOURCES OF THE INFORMATION DESCRIBED HEREIN. LOGOS ARE FOR IDENTIFICATION PURPOSES ONLY AND MAY BE TRADEMARKS OF THEIR RESPECTIVE COMPANIES. NAI Farbman, INC. CA BRE LIC. #01990696.

1,200 - 2,624 SF
RETAIL



FOR LEASE

Current Floor Plan



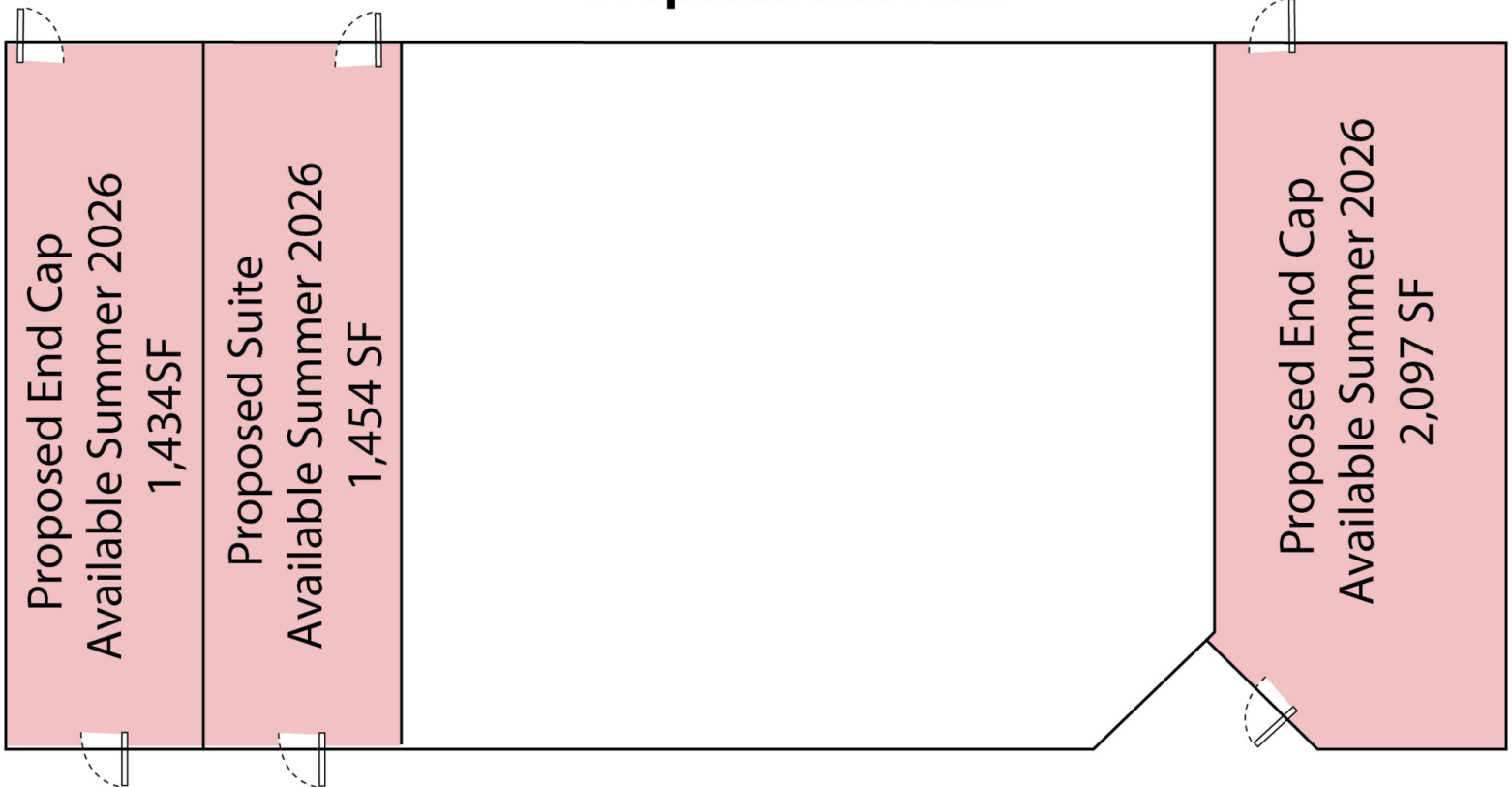
1,200 - 2,624 SF

RETAIL



FOR LEASE

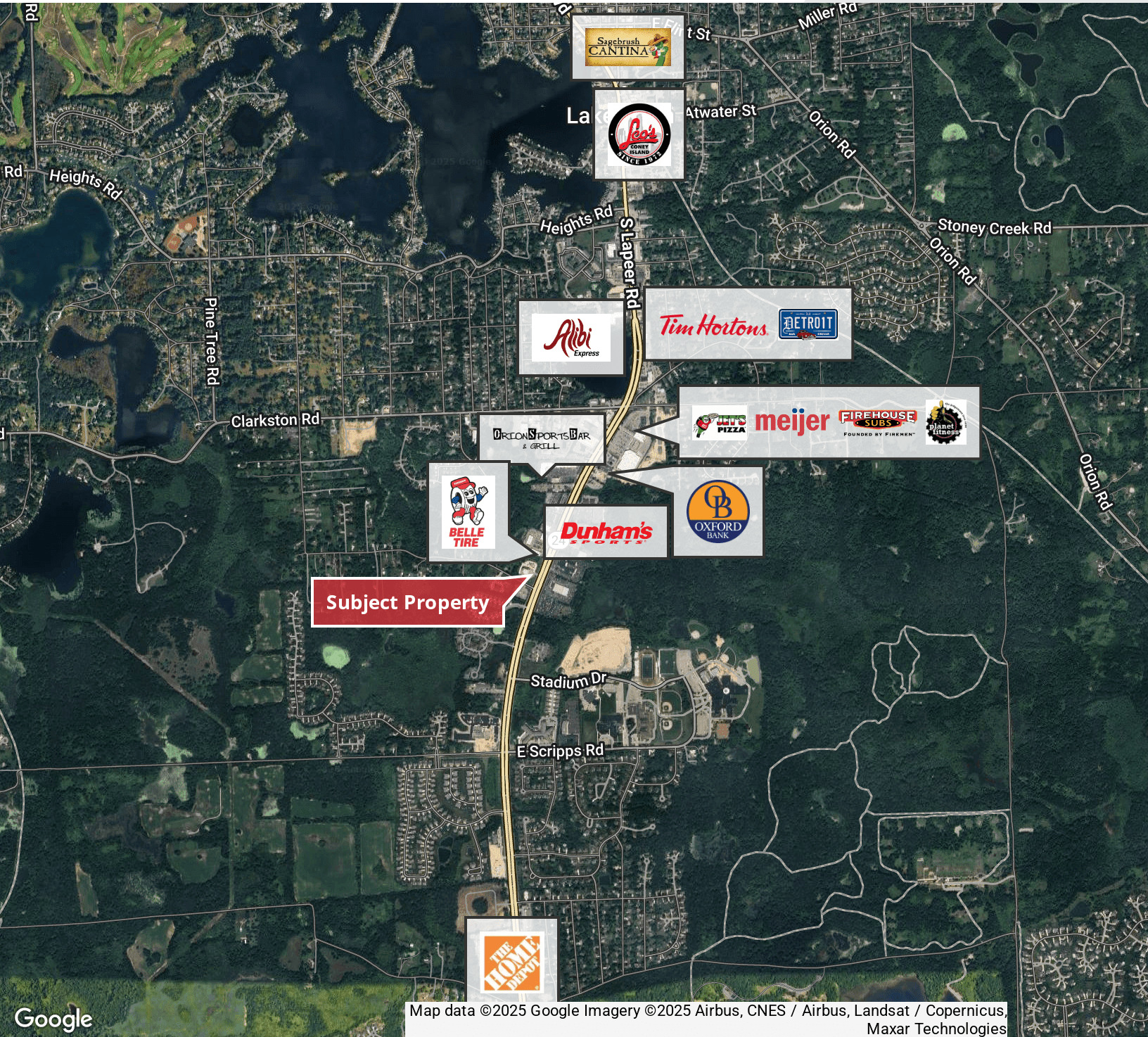
Proposed Site Plan



1,200 - 2,624 SF
RETAIL



FOR LEASE



Subject Property

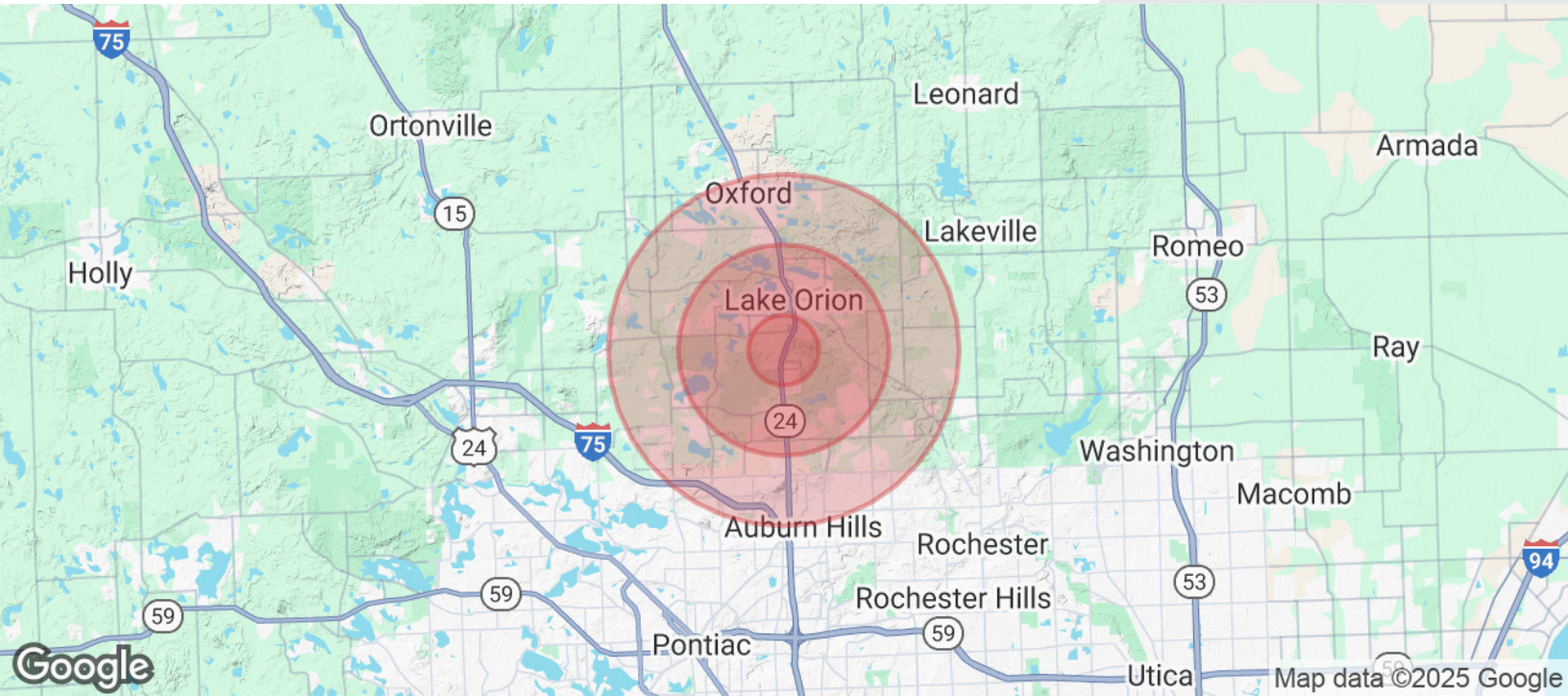
Google

Map data ©2025 Google Imagery ©2025 Airbus, CNES / Airbus, Landsat / Copernicus, Maxar Technologies

1,200 - 2,624 SF RETAIL



FOR LEASE



POPULATION	1 MILE	3 MILES	5 MILES
Total Population	3,982	27,457	74,181
Average Age	40	41	41
Average Age (Male)	39	40	40
Average Age (Female)	41	41	41
HOUSEHOLDS & INCOME	1 MILE	3 MILES	5 MILES
Total Households	1,558	10,422	27,580
# of Persons per HH	2.6	2.6	2.7
Average HH Income	\$115,458	\$145,000	\$157,746
Average House Value	\$354,723	\$444,124	\$455,215

Demographics data derived from AlphaMap