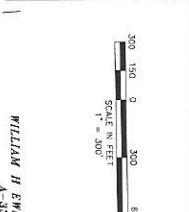


LINE	BEARING	DISTANCE
1	N 11°25'03" W	843.83
2	S 58°50'10" W	1521.13
3	N 58°24'05" E	2177.64
4	N 59°11'47" E	1331.54
5	N 31°04'44" W	813.16
6	N 50°31'13" E	694.48
7	N 68°20'00" E	435.51
8	S 62°28'21" E	1588.80
9	N 27°31'06" E	10.00
10	S 56°09'53" W	1359.46
11	S 31°27'08" E	453.05
12	S 55°50'51" W	294.85



NOTES:

- Boundary lines shown on this plat are based on the original survey records, and are not to be construed as a warranty of accuracy.
- By reference to the original survey records, it is shown that the area shown on this plat is the same as the area shown on the original survey records.
- The area shown on this plat is the same as the area shown on the original survey records.
- The area shown on this plat is the same as the area shown on the original survey records.
- The area shown on this plat is the same as the area shown on the original survey records.
- The area shown on this plat is the same as the area shown on the original survey records.
- The area shown on this plat is the same as the area shown on the original survey records.
- The area shown on this plat is the same as the area shown on the original survey records.
- The area shown on this plat is the same as the area shown on the original survey records.
- The area shown on this plat is the same as the area shown on the original survey records.
- The area shown on this plat is the same as the area shown on the original survey records.
- The area shown on this plat is the same as the area shown on the original survey records.
- The area shown on this plat is the same as the area shown on the original survey records.
- The area shown on this plat is the same as the area shown on the original survey records.
- The area shown on this plat is the same as the area shown on the original survey records.

STATE OF TEXAS

COUNTY OF TARRANT

WILLIAM H. EWING SURVEY, ABST. NO. 308

MADISON M. DAVIS SURVEY, ABST. NO. 283

C.S. HOLMEAD SURVEY, ABST. NO. 497

CITY OF DENNIS, DENNIS COUNTY, TEXAS

ENGINEERING CONCEPTS & DESIGN, L.P.

605 AVENUE B - SUITE 115

LONGVIEW, TEXAS 75604

TEL: 409-756-0988

FAX: 409-756-0989

WWW.ECD-ENG.COM

DATE: APRIL 22, 2021

460.822 ACRES

SITUATED IN THE

ALTA/ACSM LAND TITLE SURVEY



WILLIAM H. EWING

REGISTERED PROFESSIONAL ENGINEER

STATE OF TEXAS

NO. 12345

ENGINEERING CONCEPTS & DESIGN, L.P.

605 AVENUE B - SUITE 115

LONGVIEW, TEXAS 75604

TEL: 409-756-0988

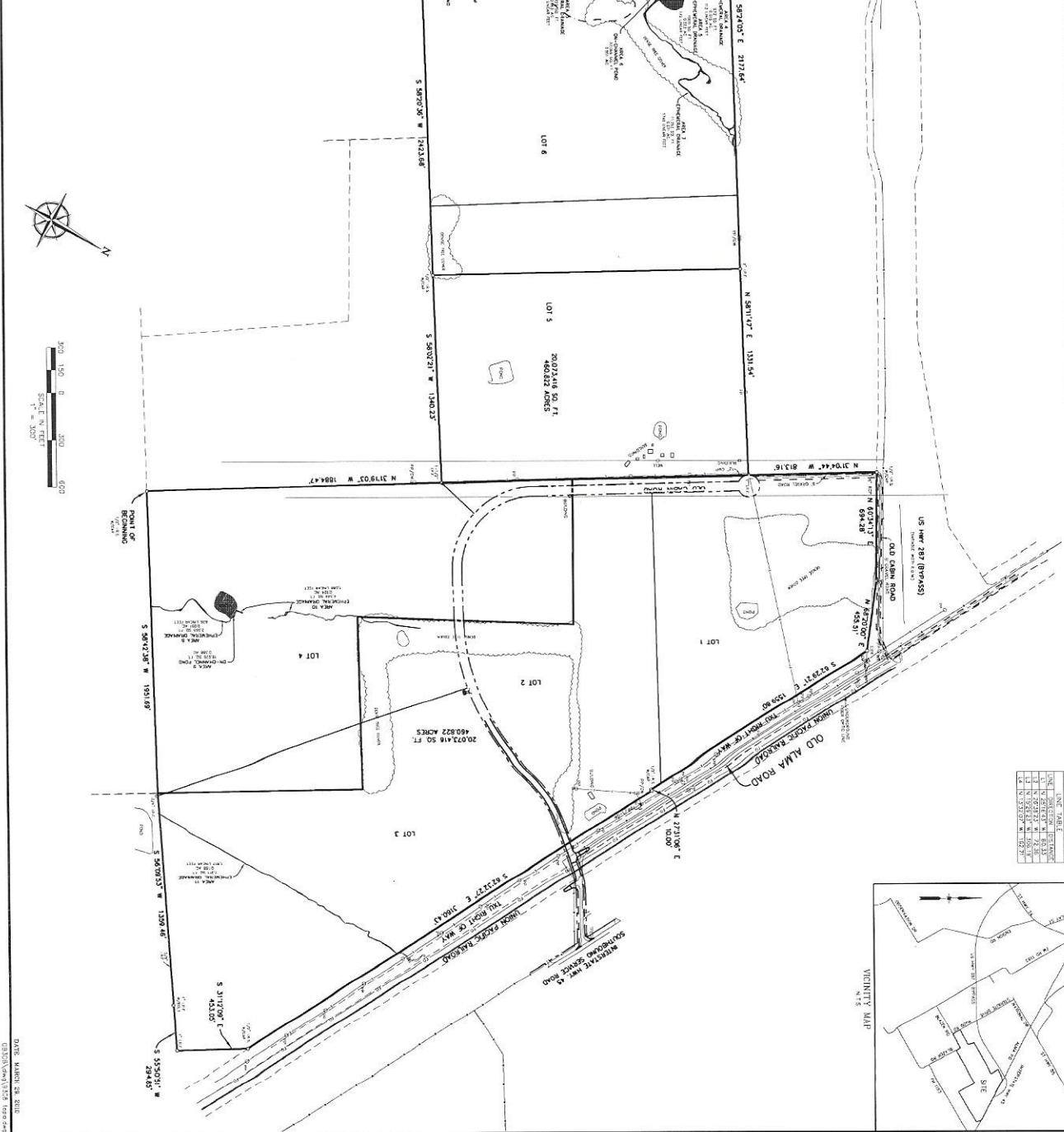
FAX: 409-756-0989

WWW.ECD-ENG.COM

NO.	DESCRIPTION	DATE
1	PRELIMINARY SURVEY	10/20/09
2	FINAL SURVEY	11/02/09
3	AS-BUILT SURVEY	11/02/09
4	REVISIONS	
5	REVISIONS	
6	REVISIONS	
7	REVISIONS	
8	REVISIONS	
9	REVISIONS	
10	REVISIONS	
11	REVISIONS	
12	REVISIONS	
13	REVISIONS	
14	REVISIONS	
15	REVISIONS	
16	REVISIONS	
17	REVISIONS	
18	REVISIONS	
19	REVISIONS	
20	REVISIONS	
21	REVISIONS	
22	REVISIONS	
23	REVISIONS	
24	REVISIONS	
25	REVISIONS	
26	REVISIONS	
27	REVISIONS	
28	REVISIONS	
29	REVISIONS	
30	REVISIONS	
31	REVISIONS	
32	REVISIONS	
33	REVISIONS	
34	REVISIONS	
35	REVISIONS	
36	REVISIONS	
37	REVISIONS	
38	REVISIONS	
39	REVISIONS	
40	REVISIONS	
41	REVISIONS	
42	REVISIONS	
43	REVISIONS	
44	REVISIONS	
45	REVISIONS	
46	REVISIONS	
47	REVISIONS	
48	REVISIONS	
49	REVISIONS	
50	REVISIONS	
51	REVISIONS	
52	REVISIONS	
53	REVISIONS	
54	REVISIONS	
55	REVISIONS	
56	REVISIONS	
57	REVISIONS	
58	REVISIONS	
59	REVISIONS	
60	REVISIONS	
61	REVISIONS	
62	REVISIONS	
63	REVISIONS	
64	REVISIONS	
65	REVISIONS	
66	REVISIONS	
67	REVISIONS	
68	REVISIONS	
69	REVISIONS	
70	REVISIONS	
71	REVISIONS	
72	REVISIONS	
73	REVISIONS	
74	REVISIONS	
75	REVISIONS	
76	REVISIONS	
77	REVISIONS	
78	REVISIONS	
79	REVISIONS	
80	REVISIONS	
81	REVISIONS	
82	REVISIONS	
83	REVISIONS	
84	REVISIONS	
85	REVISIONS	
86	REVISIONS	
87	REVISIONS	
88	REVISIONS	
89	REVISIONS	
90	REVISIONS	
91	REVISIONS	
92	REVISIONS	
93	REVISIONS	
94	REVISIONS	
95	REVISIONS	
96	REVISIONS	
97	REVISIONS	
98	REVISIONS	
99	REVISIONS	
100	REVISIONS	

WETLANDS OVERLAY
OF
460.822 ACRES
SITUATED IN THE
WILLIAM DIXON SURVEY, ABST. NO. 308
WILLIAM H. EWING SURVEY, ABST. NO. 352
MADISON M. DAVIS, ABST. NO. 407
& C.S. 40, MADISON, ABST. NO. 497
CITY OF EMMIS, ELLIS COUNTY, TEXAS
ENGINEERING CONCEPTS & DESIGN, L.P.
ENGINEERING/PLANNING/MANAGEMENT/CONSTRUCTION SERVICES
1708 W. HWY. 287, SUITE 200, WAXAHACH, TEXAS 75090
DATE: NOVEMBER 04, 2010

DATE: MARCH 28, 2011
SHEET 1 OF 2



LINE	TABLE	BEARING	DISTANCE
1	1	N 89° 15' 00" E	120.00
2	2	S 89° 15' 00" W	120.00
3	3	N 89° 15' 00" E	120.00
4	4	S 89° 15' 00" W	120.00
5	5	N 89° 15' 00" E	120.00
6	6	S 89° 15' 00" W	120.00
7	7	N 89° 15' 00" E	120.00
8	8	S 89° 15' 00" W	120.00
9	9	N 89° 15' 00" E	120.00
10	10	S 89° 15' 00" W	120.00
11	11	N 89° 15' 00" E	120.00
12	12	S 89° 15' 00" W	120.00
13	13	N 89° 15' 00" E	120.00
14	14	S 89° 15' 00" W	120.00
15	15	N 89° 15' 00" E	120.00
16	16	S 89° 15' 00" W	120.00
17	17	N 89° 15' 00" E	120.00
18	18	S 89° 15' 00" W	120.00
19	19	N 89° 15' 00" E	120.00
20	20	S 89° 15' 00" W	120.00
21	21	N 89° 15' 00" E	120.00
22	22	S 89° 15' 00" W	120.00
23	23	N 89° 15' 00" E	120.00
24	24	S 89° 15' 00" W	120.00
25	25	N 89° 15' 00" E	120.00
26	26	S 89° 15' 00" W	120.00
27	27	N 89° 15' 00" E	120.00
28	28	S 89° 15' 00" W	120.00
29	29	N 89° 15' 00" E	120.00
30	30	S 89° 15' 00" W	120.00
31	31	N 89° 15' 00" E	120.00
32	32	S 89° 15' 00" W	120.00
33	33	N 89° 15' 00" E	120.00
34	34	S 89° 15' 00" W	120.00
35	35	N 89° 15' 00" E	120.00
36	36	S 89° 15' 00" W	120.00
37	37	N 89° 15' 00" E	120.00
38	38	S 89° 15' 00" W	120.00
39	39	N 89° 15' 00" E	120.00
40	40	S 89° 15' 00" W	120.00
41	41	N 89° 15' 00" E	120.00
42	42	S 89° 15' 00" W	120.00
43	43	N 89° 15' 00" E	120.00
44	44	S 89° 15' 00" W	120.00
45	45	N 89° 15' 00" E	120.00
46	46	S 89° 15' 00" W	120.00
47	47	N 89° 15' 00" E	120.00
48	48	S 89° 15' 00" W	120.00
49	49	N 89° 15' 00" E	120.00
50	50	S 89° 15' 00" W	120.00
51	51	N 89° 15' 00" E	120.00
52	52	S 89° 15' 00" W	120.00
53	53	N 89° 15' 00" E	120.00
54	54	S 89° 15' 00" W	120.00
55	55	N 89° 15' 00" E	120.00
56	56	S 89° 15' 00" W	120.00
57	57	N 89° 15' 00" E	120.00
58	58	S 89° 15' 00" W	120.00
59	59	N 89° 15' 00" E	120.00
60	60	S 89° 15' 00" W	120.00
61	61	N 89° 15' 00" E	120.00
62	62	S 89° 15' 00" W	120.00
63	63	N 89° 15' 00" E	120.00
64	64	S 89° 15' 00" W	120.00
65	65	N 89° 15' 00" E	120.00
66	66	S 89° 15' 00" W	120.00
67	67	N 89° 15' 00" E	120.00
68	68	S 89° 15' 00" W	120.00
69	69	N 89° 15' 00" E	120.00
70	70	S 89° 15' 00" W	120.00
71	71	N 89° 15' 00" E	120.00
72	72	S 89° 15' 00" W	120.00
73	73	N 89° 15' 00" E	120.00
74	74	S 89° 15' 00" W	120.00
75	75	N 89° 15' 00" E	120.00
76	76	S 89° 15' 00" W	120.00
77	77	N 89° 15' 00" E	120.00
78	78	S 89° 15' 00" W	120.00
79	79	N 89° 15' 00" E	120.00
80	80	S 89° 15' 00" W	120.00
81	81	N 89° 15' 00" E	120.00
82	82	S 89° 15' 00" W	120.00
83	83	N 89° 15' 00" E	120.00
84	84	S 89° 15' 00" W	120.00
85	85	N 89° 15' 00" E	120.00
86	86	S 89° 15' 00" W	120.00
87	87	N 89° 15' 00" E	120.00
88	88	S 89° 15' 00" W	120.00
89	89	N 89° 15' 00" E	120.00
90	90	S 89° 15' 00" W	120.00
91	91	N 89° 15' 00" E	120.00
92	92	S 89° 15' 00" W	120.00
93	93	N 89° 15' 00" E	120.00
94	94	S 89° 15' 00" W	120.00
95	95	N 89° 15' 00" E	120.00
96	96	S 89° 15' 00" W	120.00
97	97	N 89° 15' 00" E	120.00
98	98	S 89° 15' 00" W	120.00
99	99	N 89° 15' 00" E	120.00
100	100	S 89° 15' 00" W	120.00

