

FOR LEASE

Owned and Operated by 

MILL CREEK DC

21846 & 21854 76th Ave S, Kent, WA

±16,800 SF

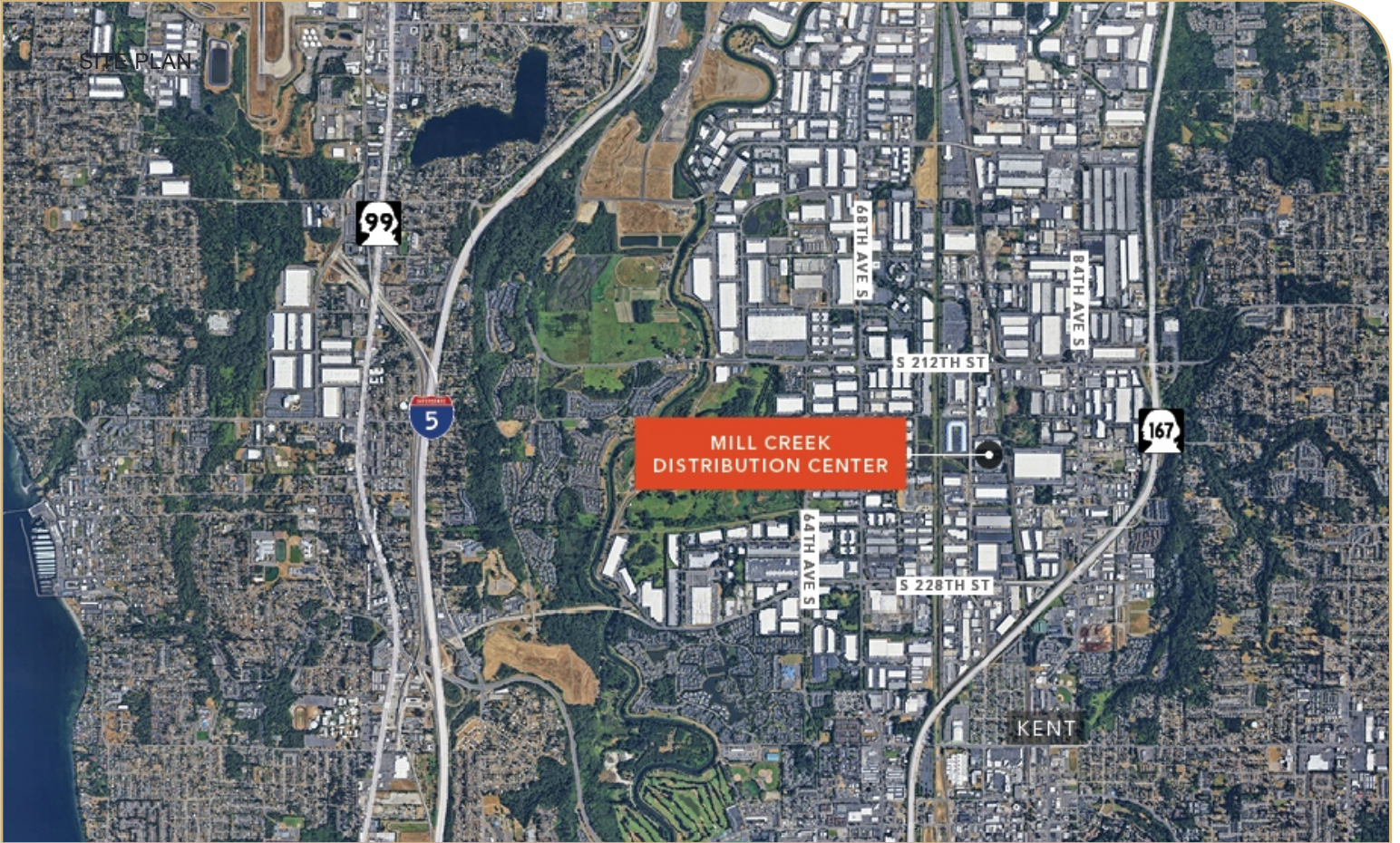


**LEASING INFO
& CONTACT**

Kraig Heeter, SIOR (206) 248.7313 / kraig.heeter@kidder.com
Doug Klein, SIOR (206) 248.7348 / doug.klein@kidder.com



This is not an offer or acceptance of an offer to lease space. A lease will only be offered or made in a written agreement signed by landlord. No representation or warranty of any kind is made by landlord unless set forth in a written definitive lease executed by the landlord.

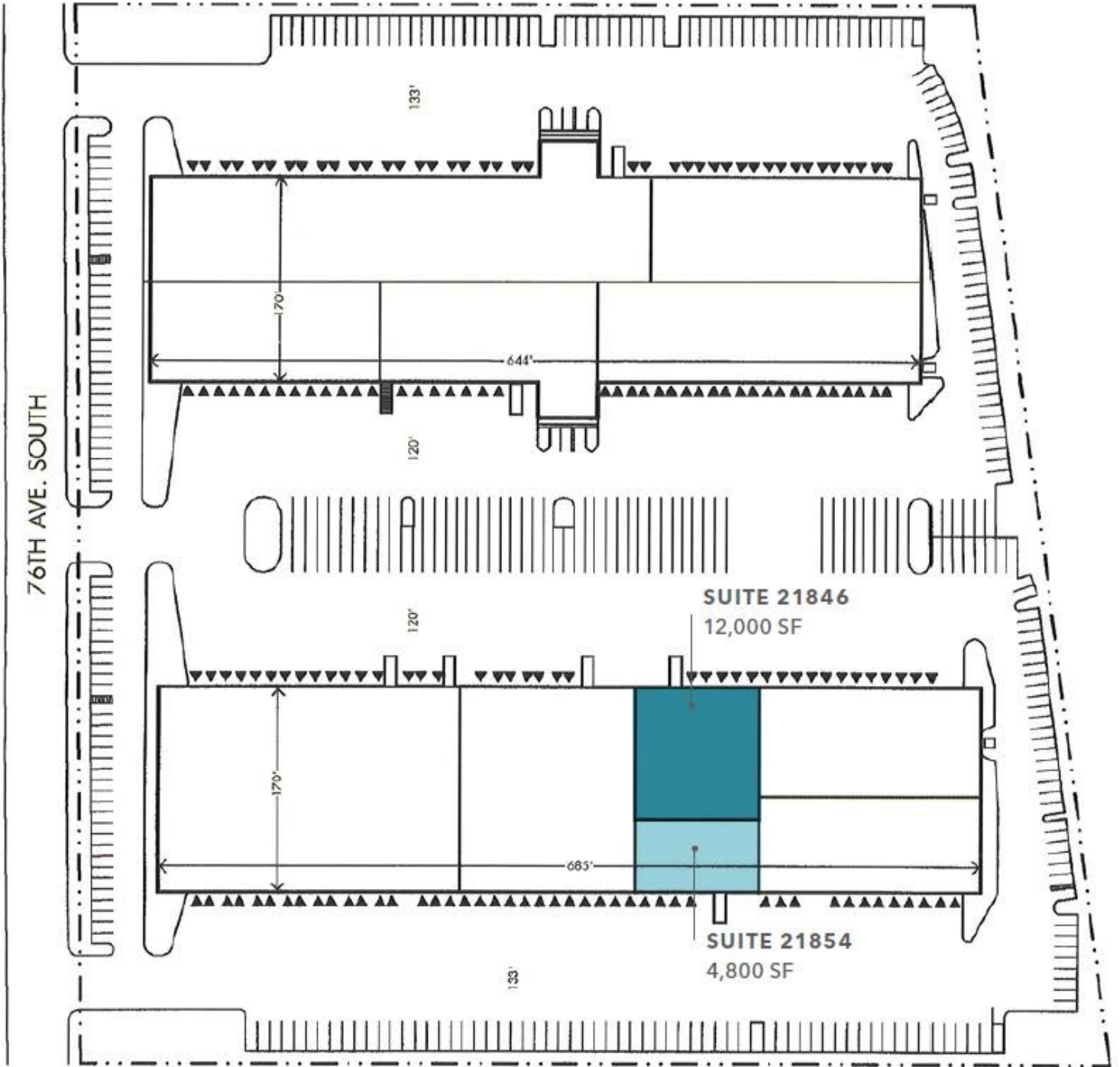


PROPERTY HIGHLIGHTS

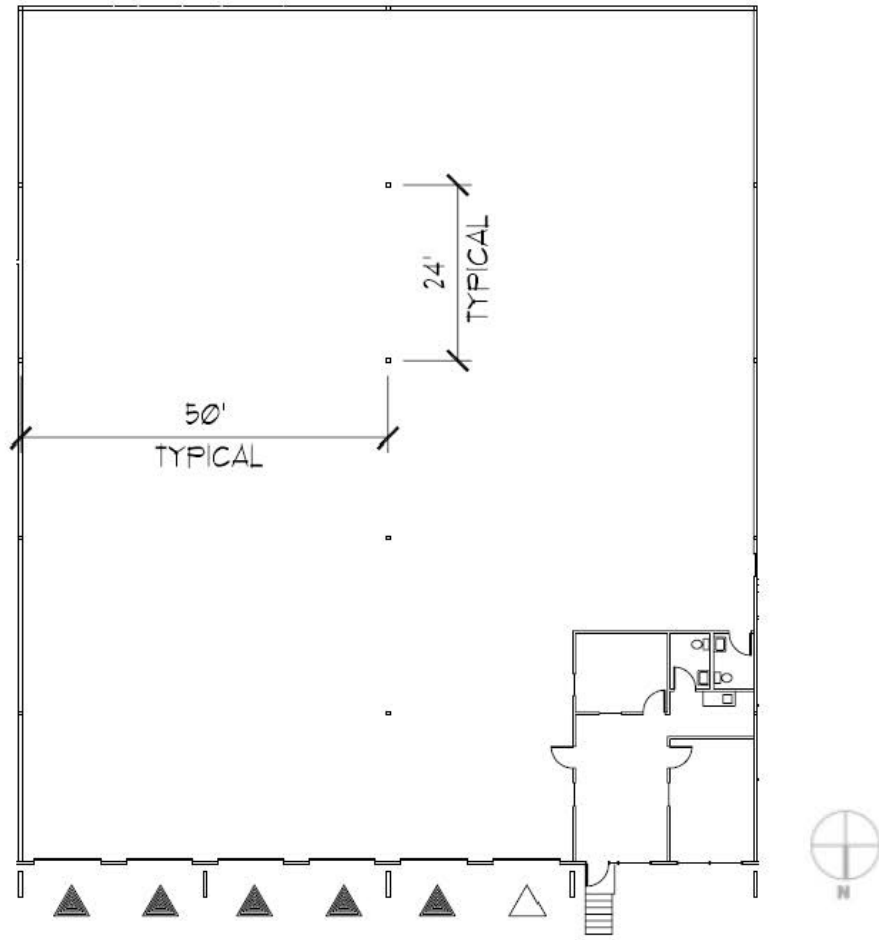
Total SF	±16,800 SF
Office SF	±2,588 SF
Clear Height	21' - 22'
Loading	10 DH / 2 Drive-In

Available	November 1, 2026
Trailer Parking	14 Stalls
Zoning	I-3 City of Kent
Rates	\$1.10 PSF Shell / \$1.35 PSF Office/ \$100 per trailer stall per month

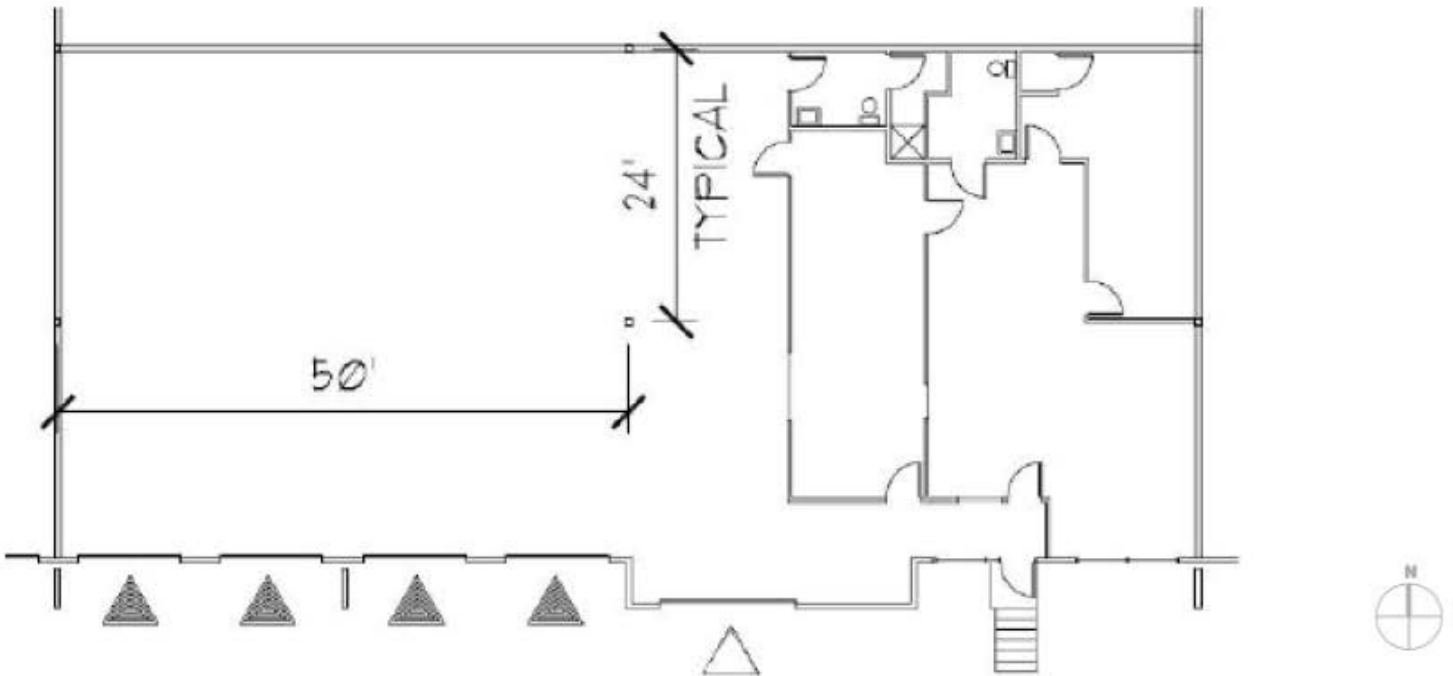
SITE PLAN



21846 FLOOR PLAN



21854 FLOOR PLAN



Mill Creek Distribution Center

A 226,000 square foot industrial park developed in 1989 and 1990, Mill Creek Distribution Center features tremendous access to I-5 and SR-167 via 76th Ave S 212th St. The park is designed with tenants who require extensive use of dock doors for their operation and is unique as a result of the availability of trailer parking for most spaces. The park is professionally managed and leased by Kidder Mathews.

