

office/industrial
compound
for
LEASE

available sf:
4,800 total

\$6,900/month mg

- + Main Office: 2,320 SF
- + Industrial Storage:
1,800 SF (Open Front)
- + 2nd office: 680 SF
- + Land Size: 13,487 SF
- + Zoning: I -G/T/AN
- + Parking: Ample
- + Signage: Building
- + Yard: Fenced

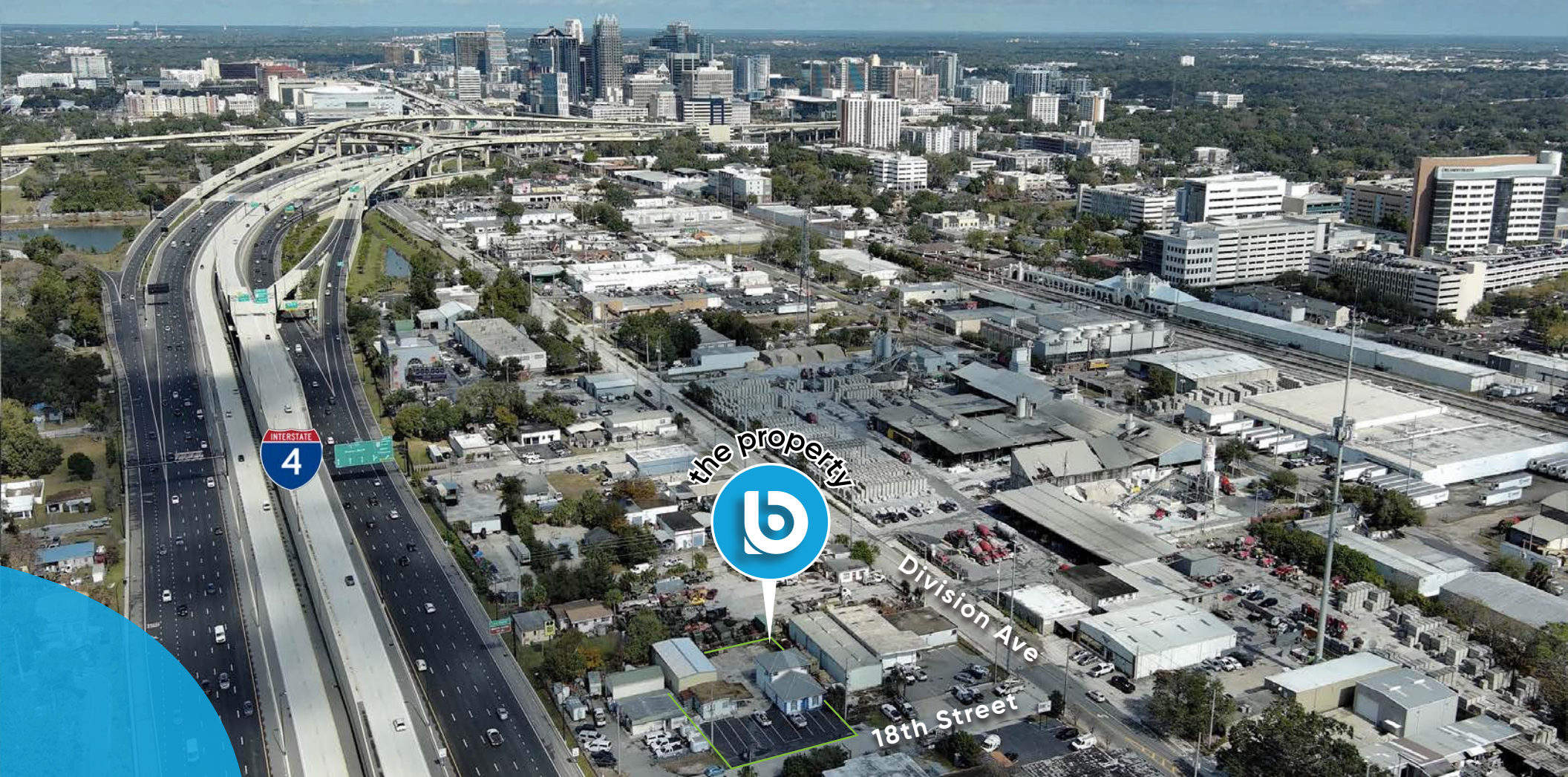
515 - 519 18th Street,
Orlando, Florida 32805

patrick goetz
vice president
(407) 734.7210
pat@BBDRE.com


Bishop Beale Duncan
COMMERCIAL REAL ESTATE



**PRICE
REDUCTION!
NOW ONLY
\$6,900
PER MONTH**



highlights

The buildings are located just south of Downtown Orlando near the intersection of Kaley Street and Division Avenue. The property offers a 2,320 SF 2-story office building, open front warehouse with high clear height, and a 680 SF storage/shed. Perfect for a contractor or like user.

- The property consists of three buildings located in downtown orlando
- Main office building is 2,325 sf of office space with 7 private offices, break area, reception and large conference area
- Building two is 676 sf currently used as a training room
- Building three is currently 1,800 sf of covered
- Open warehouse but could be enclosed
- Ample parking
- Single phase power
- Fenced yard
- Building signage



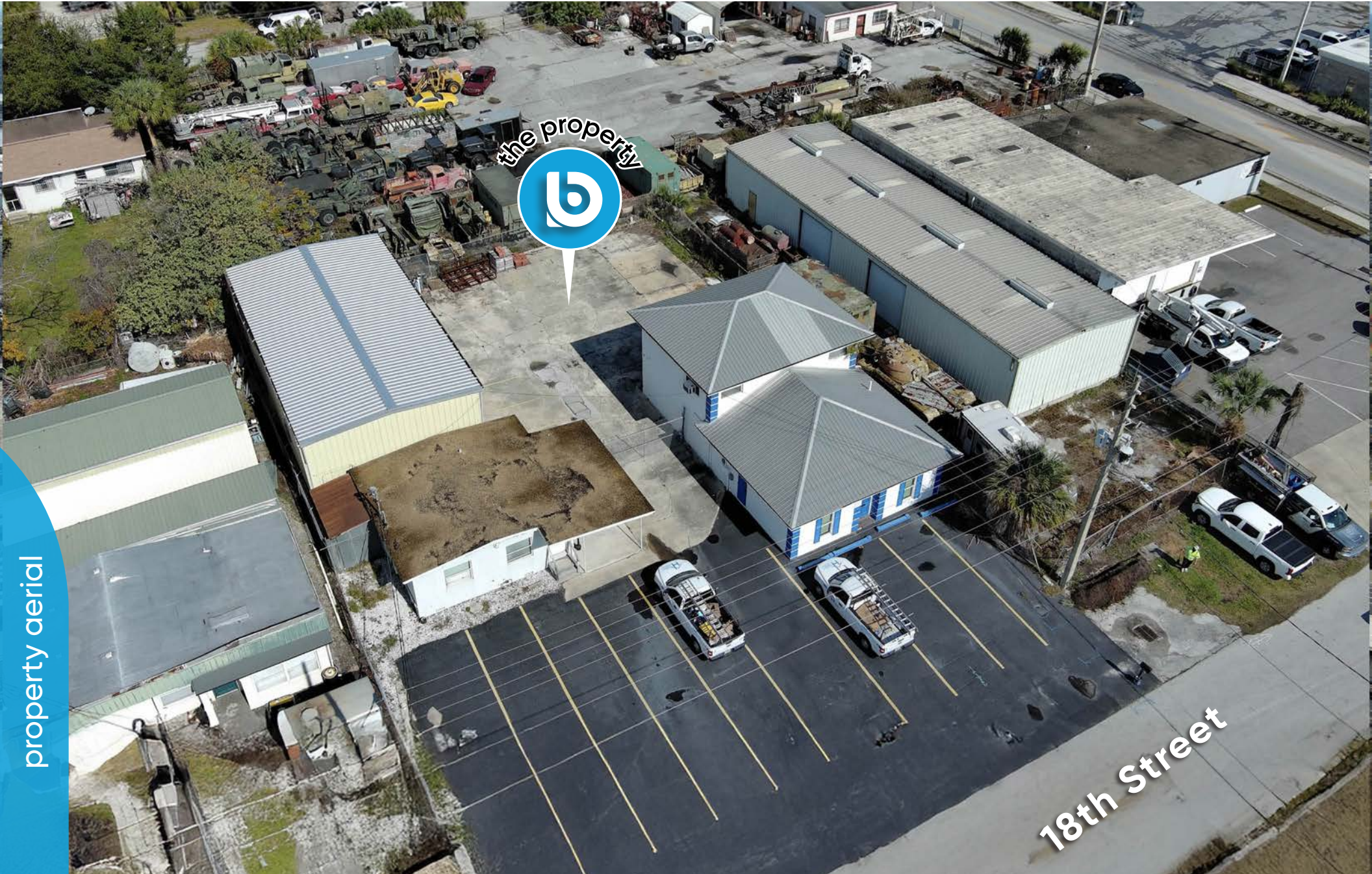
250 N. Orange Ave., Ste. 500
Orlando, FL 32801
+ (407) 426.7702
www.BBDRE.com

This offer is subject to errors, omissions, prior sale or withdrawal without notice.



for more information, contact patrick goetz vice president (407) 734.7210 pat@BBDRE.com

property aerial



property aerial

18th Street

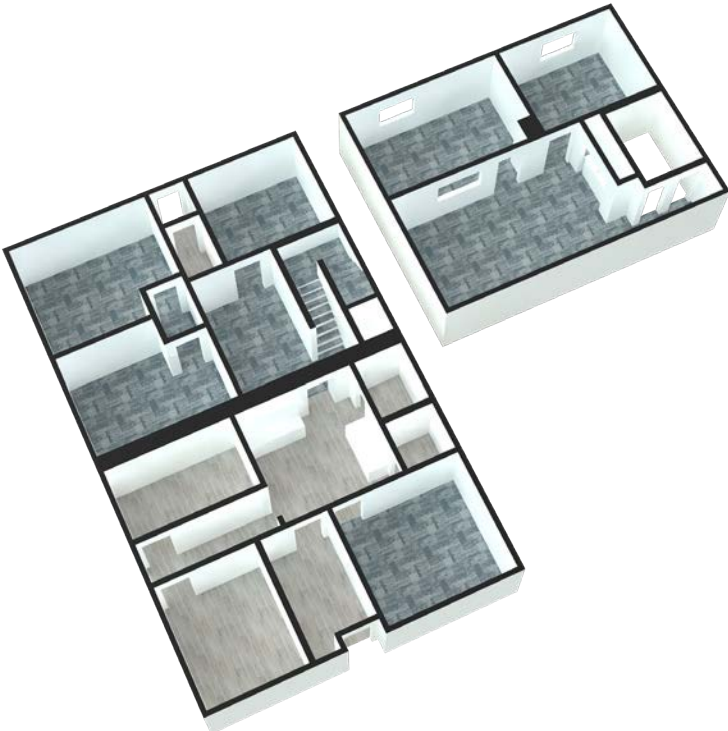
for more information, contact patrick goetz vice president (407) 734.7210 pat@BBDRE.com

site layout

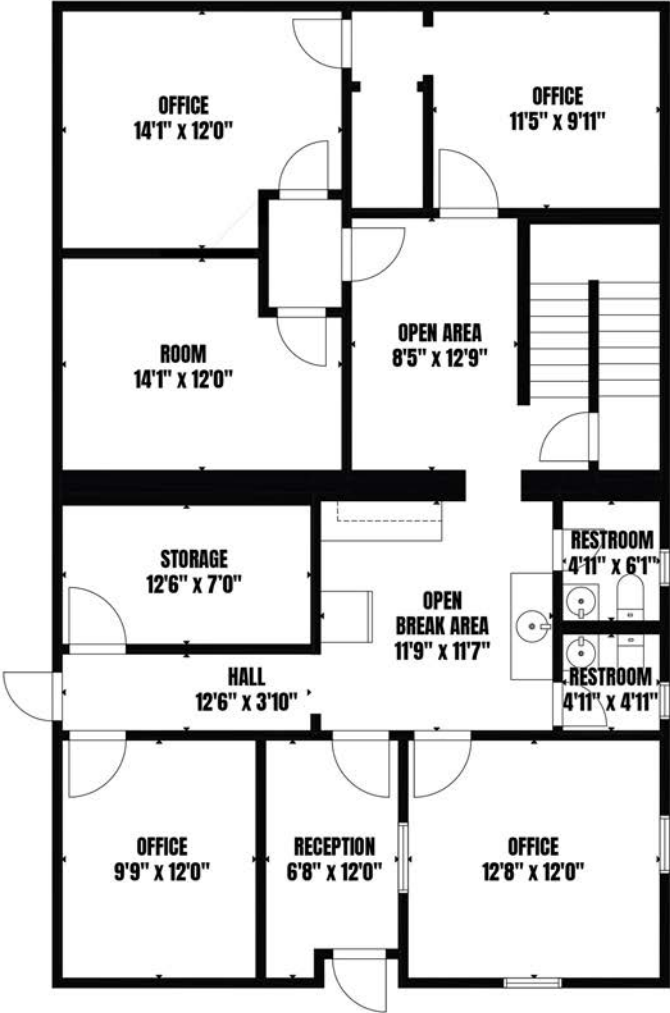


site layout

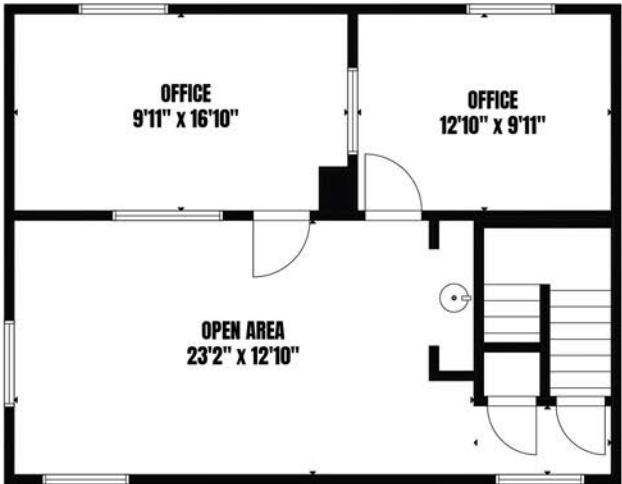
floor plan | main office | 2,320 sf



1st Floor



2nd Floor



floor plan

interiors | main office | 1st floor



interiors

interiors | main office | 2nd floor



open area



open area



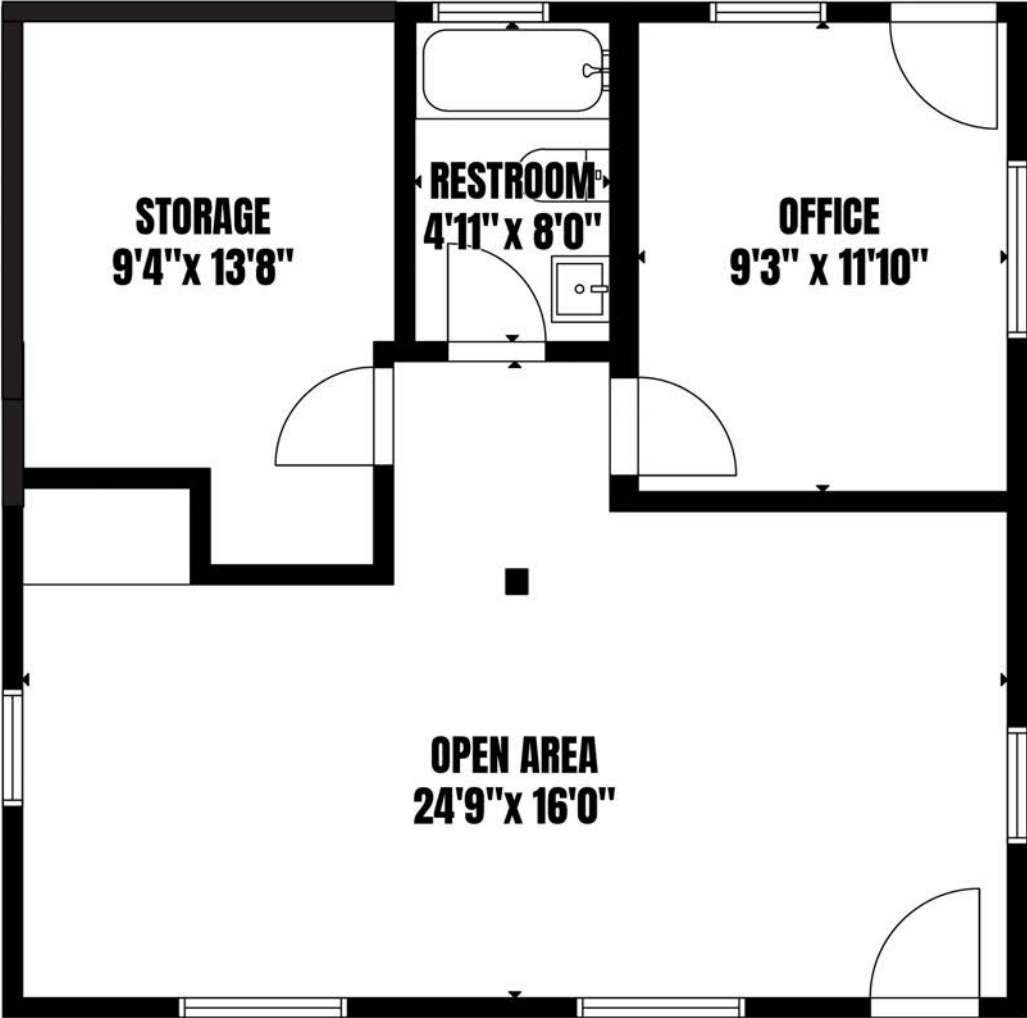
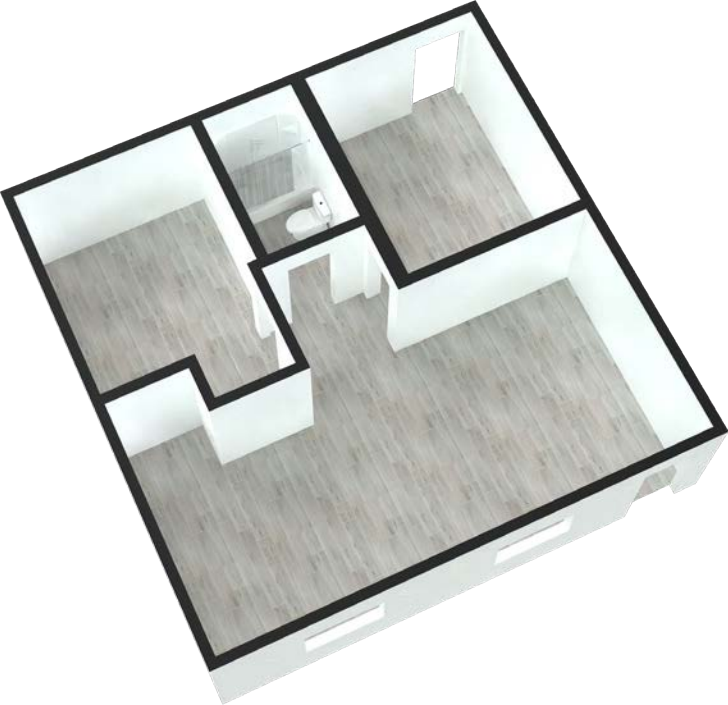
office



office

interiors

floor plan | secondary office | 676 sf



floor plan

interiors | secondary office



open area



open area



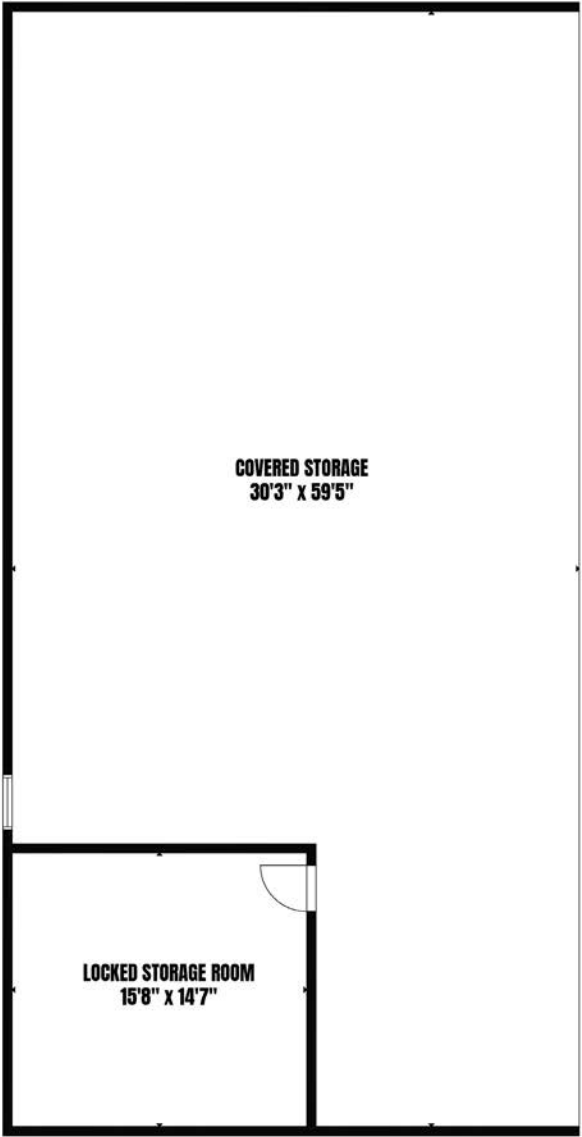
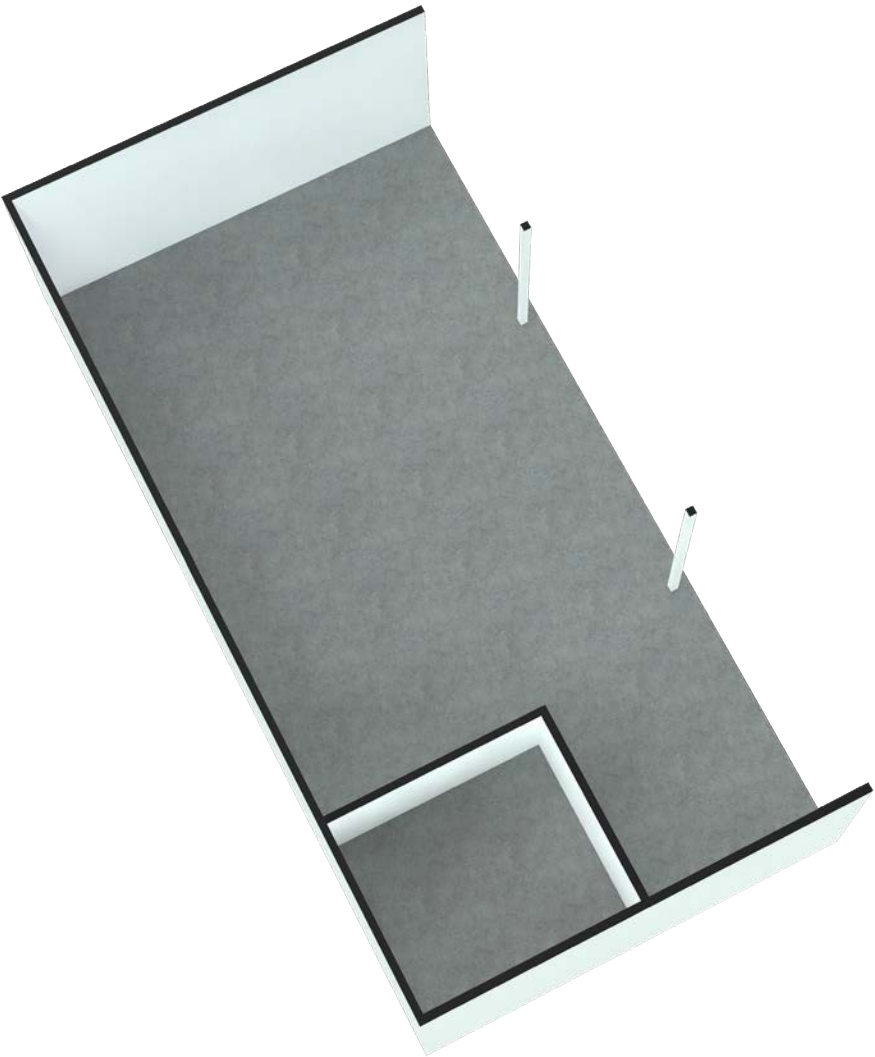
restroom



office/storage

interiors

floor plan | industrial storage | 1,800 sf



floor plan

interiors | secondary office

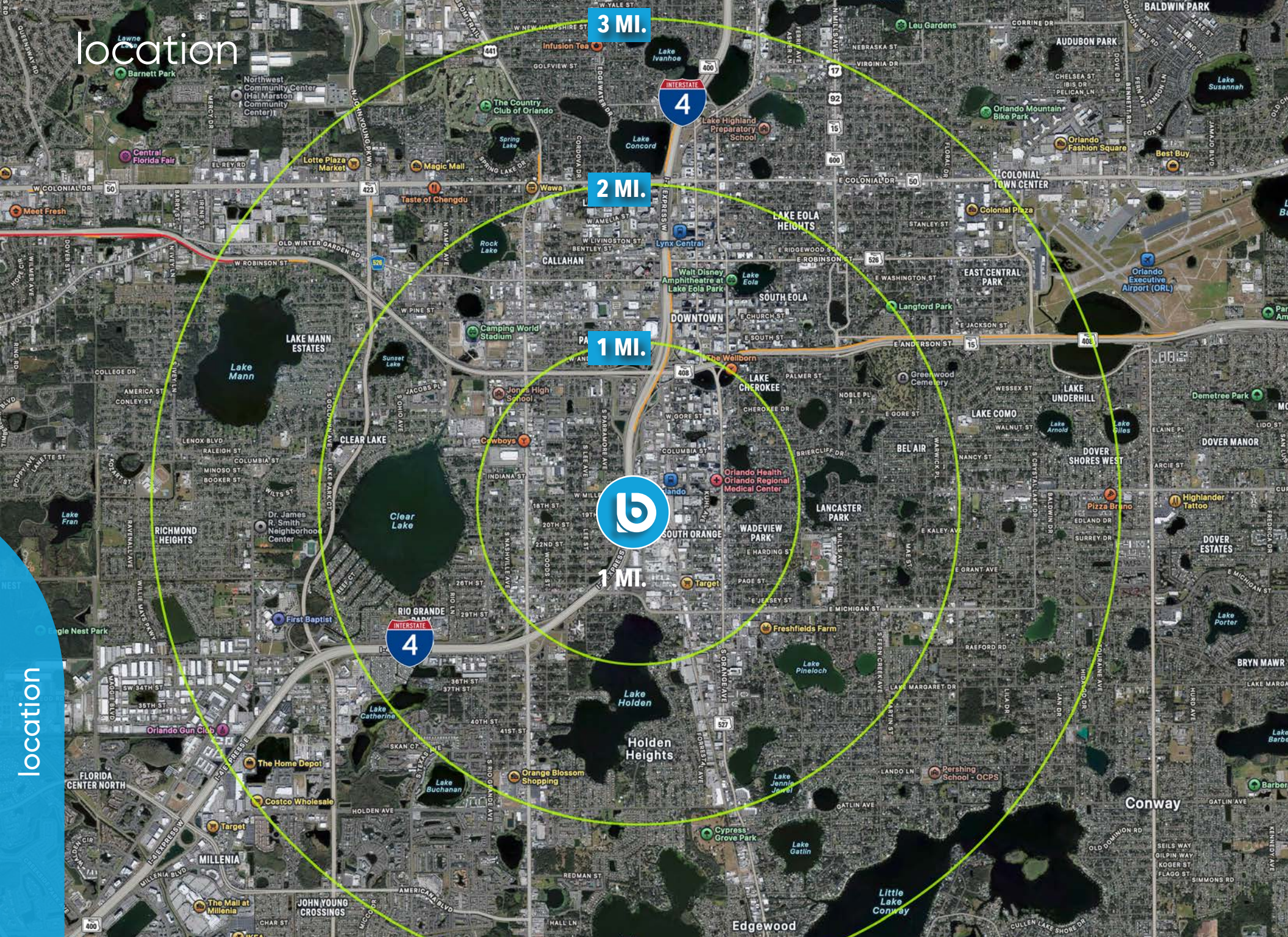


interiors

exteriors



location



location

for more information, contact patrick goetz vice president (407) 734.7210 pat@BBDRE.com