



FOR LEASE

MOUNTAIN VISTA PROFESSIONAL PARK

6301 S Mountain Vista Street
Henderson, NV 89014

Pete Janemark, CCIM

Senior Vice President

D: 702.527.7923 | C: 702.885.7383

pete.janemark@svn.com

NV #S.76731



6018 S Durango Drive, Suite 110,
Las Vegas, NV 89113

All SVN® offices are independently owned and operated.

EXECUTIVE SUMMARY



OFFERING SUMMARY

BUILDING SIZE:	37,096 SF
AVAILABLE SF:	407 - 3,472 SF
LOT SIZE:	2.04 Acres
YEAR BUILT:	1982
ZONING:	Community Commercial (CC)
APN:	161-32-303-004

PROPERTY OVERVIEW

Mountain Vista Professional Park is a large two-story medical office building situated on 2.04 acres of parking. The building features a distinctive architecture, and offers tenants and patrons a comfortable, easily accessible office environment.

PROPERTY HIGHLIGHTS

- High-traffic location with excellent visibility
- Abundant Parking
- Near Galleria at Sunset
- Modern architectural design
- Proximity to major highways

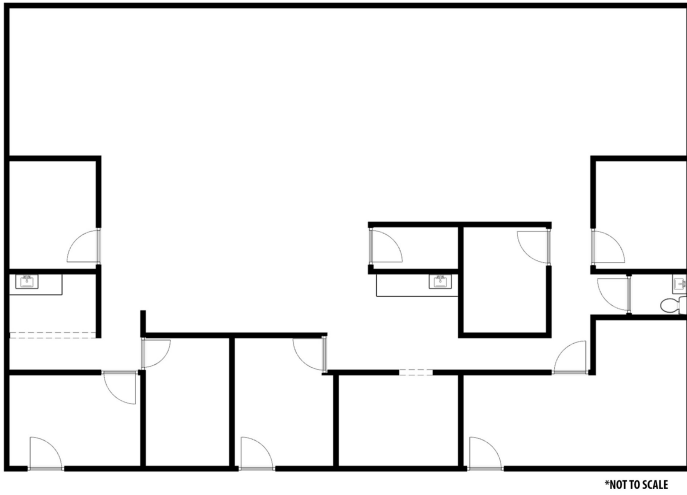
PETE JANEMARK, CCIM

O: 702.527.7923 | C: 702.885.7383

pete.janemark@svn.com

NV #S.76731

6301 S MOUNTAIN VISTA STREET - SUITE 200 - ±3,472 SF



SUITE DESCRIPTION

This suite features a large open area, a reception with a sliding glass, a waiting area, six exam rooms, , a break room with a sink, a server room, and one restroom.



PETE JANEMARK, CCIM

O: 702.527.7923 | C: 702.885.7383

pete.janemark@svn.com

NV #S.76731

RETAILER MAP



PETE JANEMARK, CCIM
 O: 702.527.7923 | C: 702.885.7383
 pete.janemark@svn.com
 NV #S.76731

6301 S MOUNTAIN VISTA STREET | Henderson, NV 89014