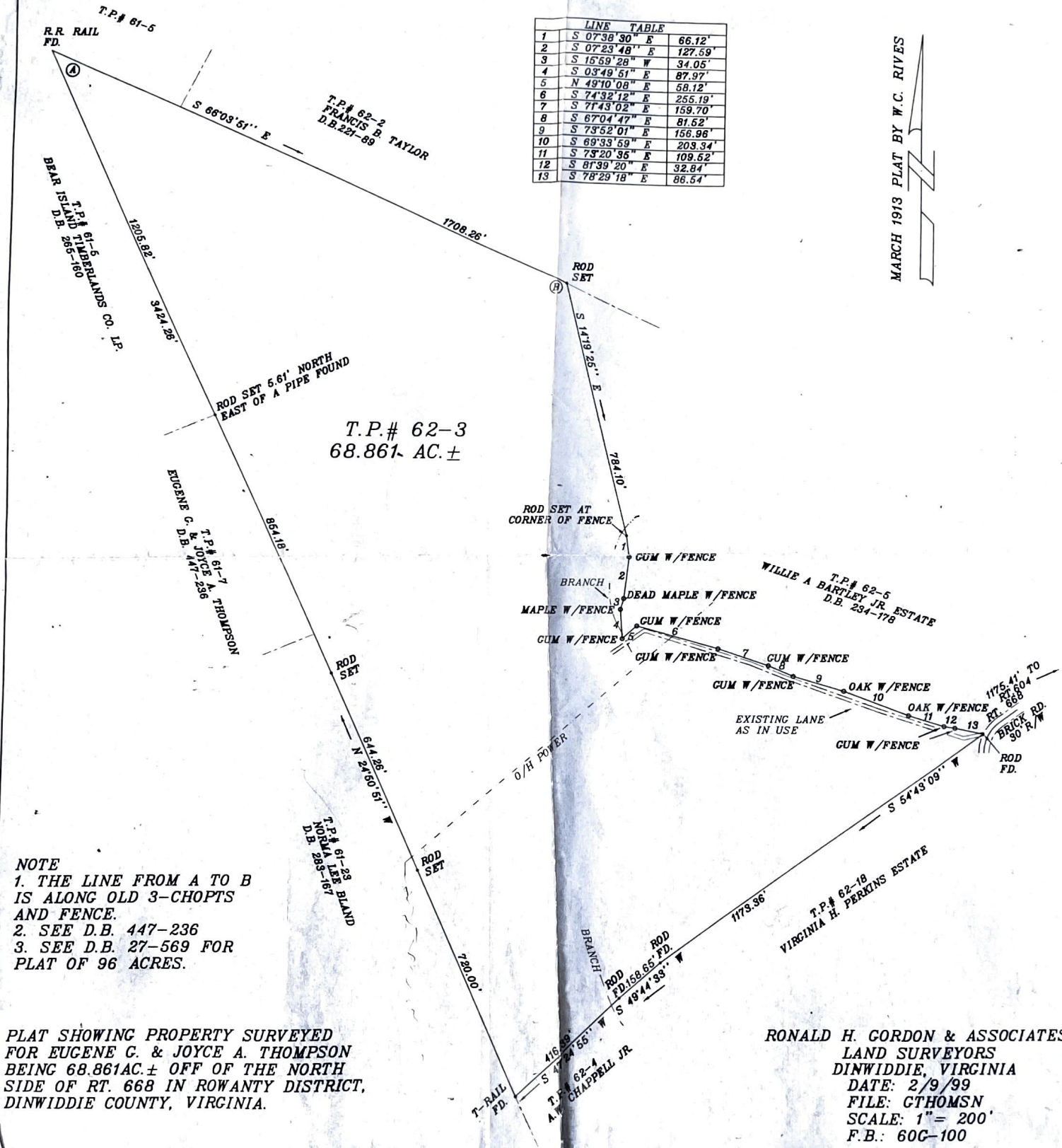


LINE TABLE		
1	S 07°38'30" E	66.12'
2	S 07°23'48" E	127.59'
3	S 15°59'28" W	34.05'
4	S 03°49'51" E	87.97'
5	N 49°10'08" E	58.12'
6	S 74°32'12" E	255.19'
7	S 77°43'02" E	159.70'
8	S 67°04'47" E	81.52'
9	S 73°52'01" E	156.96'
10	S 69°33'59" E	203.94'
11	S 73°20'35" E	109.52'
12	S 87°39'20" E	32.84'
13	S 78°29'18" E	86.54'

MARCH 1913 PLAT BY W.C. RIVES



T.P.# 62-3
68.861 AC.±

NOTE
 1. THE LINE FROM A TO B IS ALONG OLD 3-CHOPTS AND FENCE.
 2. SEE D.B. 447-236
 3. SEE D.B. 27-569 FOR PLAT OF 96 ACRES.

PLAT SHOWING PROPERTY SURVEYED FOR EUGENE C. & JOYCE A. THOMPSON BEING 68.861 AC.± OFF OF THE NORTH SIDE OF RT. 668 IN ROWANTY DISTRICT, DINWIDDIE COUNTY, VIRGINIA.

RONALD H. GORDON & ASSOCIATES
 LAND SURVEYORS
 DINWIDDIE, VIRGINIA
 DATE: 2/9/99
 FILE: GTHOMS N
 SCALE: 1" = 200'
 F.B.: 60C-100