

# TATUM RANCH CROSSING

COMING SOON



SHOP SPACE AVAILABLE



# CAVE CREEK RD & TATUM BLVD

Phoenix, AZ



# property summary

AVAILABLE ±1,200 – 2,356 SF

PRICING

CALL FOR PRICING

ZONING C-2

## PROPERTY HIGHLIGHTS

- Anchored by Safeway (recently remodeled)
- Tatum Ranch Golf Course, a premiere golf and social club, is located directly northeast of shopping center
- Affluent community in Metro Phoenix, which is rapidly growing
- Exceptional visibility along heavily trafficked Cave Creek Road with nearly 38,000 VPD
- High-barrier-to-entry demographics and excellent synergy with nearby retail



## TRAFFIC COUNT

### Cave Creek Rd

N: ±37,628 VPD (NB/SB)

S: ±30,099 VPD (NB/SB)

INRIX 2023

### Tatum Blvd

E: ±23,339 VPD (EB/WB)

W: 8,844 VPD (EB/WB)

## MAJOR RETAILERS IN CENTER



BANK OF AMERICA



NWC

## SHOP SPACE AVAILABLE

Cave Creek Rd & Tatum Blvd



# site plan



SUITE	Tenant	SF
100	Subway	1,261
106	Woof Gang (Coming Soon)	1,227
110	Tranquil Spa	1,234
112	Mathnasium	1,307
116	Trendy Nails	980
118	PostNet	980
120	LEASED - Barbershop	1,307
125	Safeway	55,456
130	INFINITY TKD	1,307
132	AllState	908
134-136	Pei Tools (Coming Available)	±1,200 – 2,356
138	Tatum Ranch Dental	1,645
140	H&R	1,000
142	Chiropractor	1,500
29815	Starbucks Coffee	2,860
29822	Bank of America	3,020
29822	ATI Physical Therapy	2,408
29835	Safeway Gas	4,500

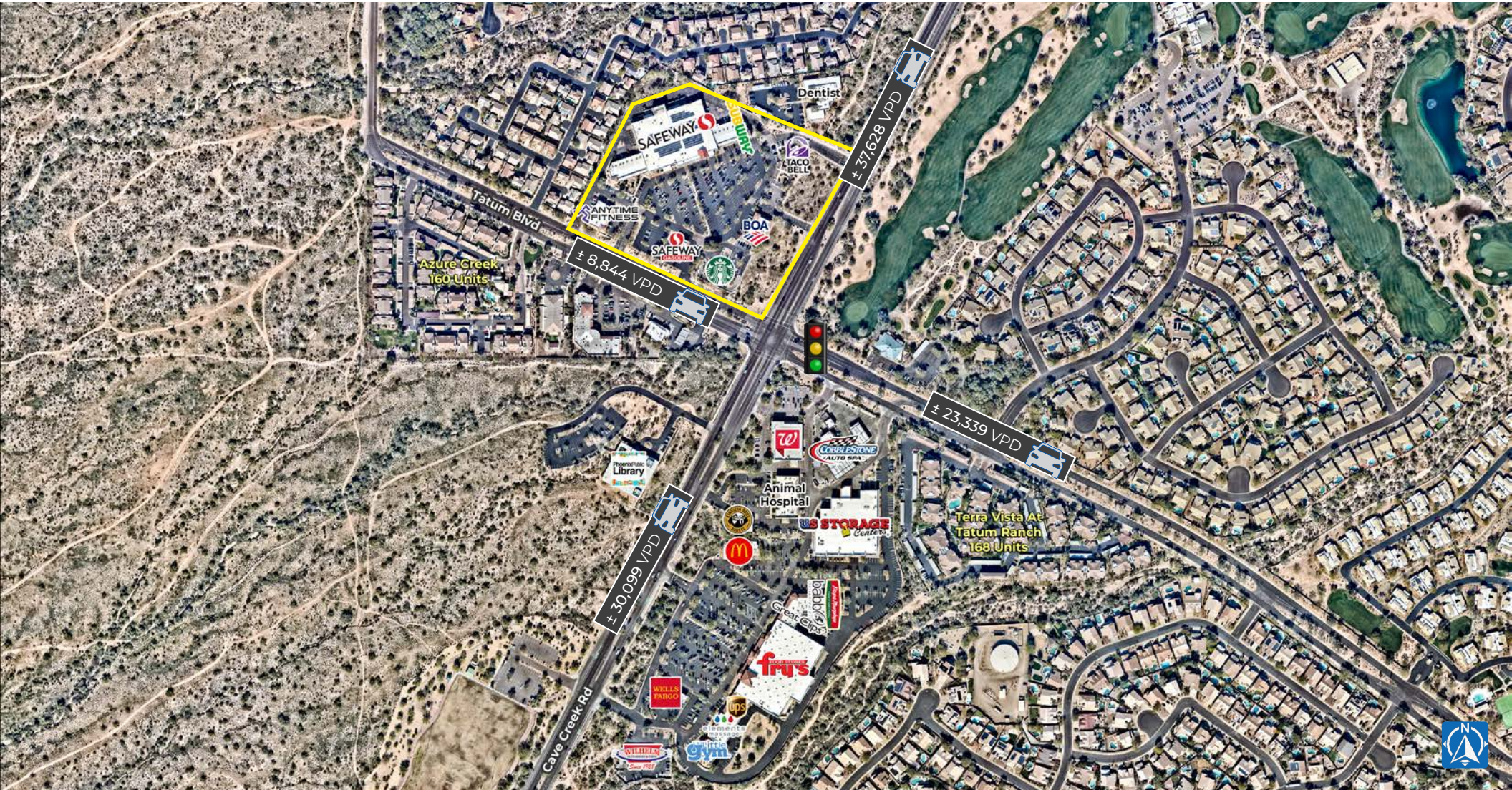
NWC

## SHOP SPACE AVAILABLE

Cave Creek Rd & Tatum Blvd



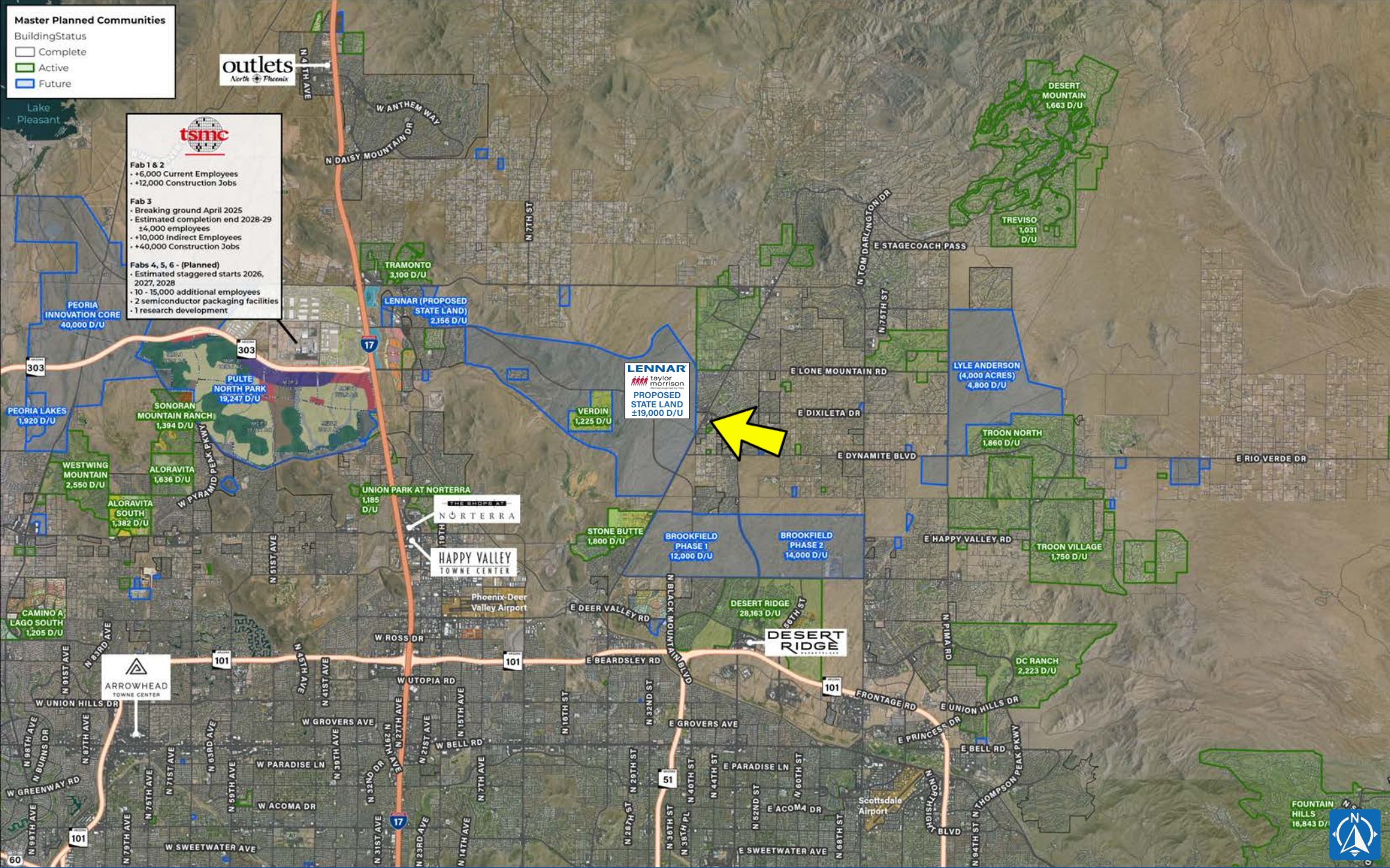
# aerial zoom



## SHOP SPACE AVAILABLE

Cave Creek Rd & Tatum Blvd





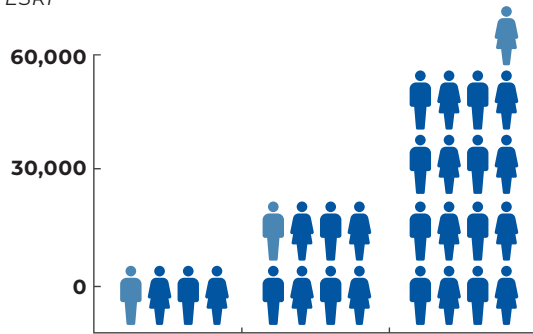
# SHOP SPACE AVAILABLE

Cave Creek Rd & Tatum Blvd



# demographics

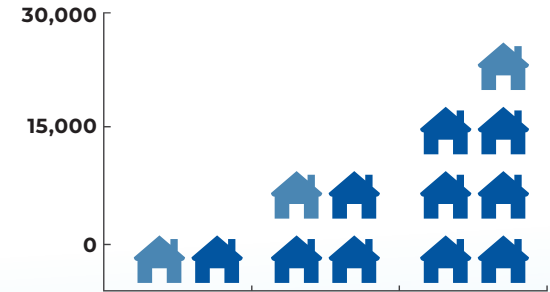
2025 ESRI



	1-Mile	3-Mile	5-Mile
2025 Total Population	7,127	27,193	61,600
2030 Total Population	7,129	27,219	62,919

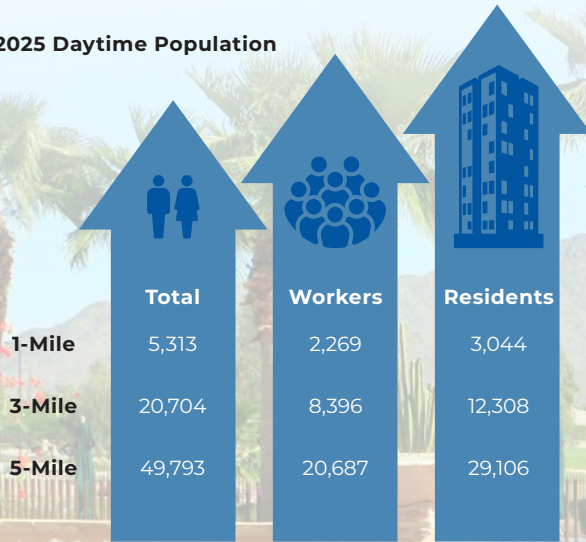


	Median HH Income	Average HH Income	Per Capita Income
1-Mile	\$138,416	\$185,794	\$77,773
3-Mile	\$154,688	\$199,017	\$78,535
5-Mile	\$163,552	\$215,730	\$85,724

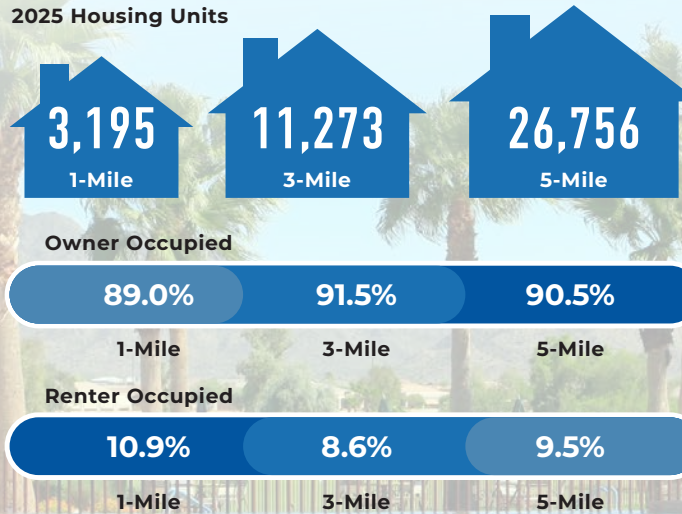


	1-Mile	3-Mile	5-Mile
2025 Households	3,069	10,734	24,426
2030 Households	3,112	10,876	25,210

## 2025 Daytime Population



## 2025 Housing Units



## 2025 Businesses



NWC

**SHOP SPACE AVAILABLE**

Cave Creek Rd & Tatum Blvd





COMING SOON  
**WOLF GANG**  
BAKERY & GROOMING

exclusively listed by

**NICK DEDONA**

602.734.7208

ndedona@pcaemail.com

**JACKSON DRAGON**

602.288.3468

jdragon@pcaemail.com



The information contained herein has been obtained from sources believed reliable. While we do not doubt its accuracy, we have not verified it and make no guarantee, warranty or representation about it. It is your responsibility to independently confirm its accuracy and completeness. Any projections, opinions, assumptions or estimates used are for example only, and do not represent the current or future performance of the property. The value of this transaction to you depends on tax and other factors which should be evaluated by your tax, financial and legal advisors. You and your advisors should conduct a careful, independent investigation of the property to determine to your satisfaction the suitability of the property for your needs. May 15, 2026 2:29 PM

3131 East Camelback Road, Suite 340 | Phoenix, Arizona 85016  
P. (602) 957-9800 F. (602) 957-0889  
phoenixcommercialadvisors.com