

1195-1197 ROCHESTER ROAD  
TROY, MICHIGAN

INDUSTRIAL FOR LEASE  
1,250 Square Feet Unit Available



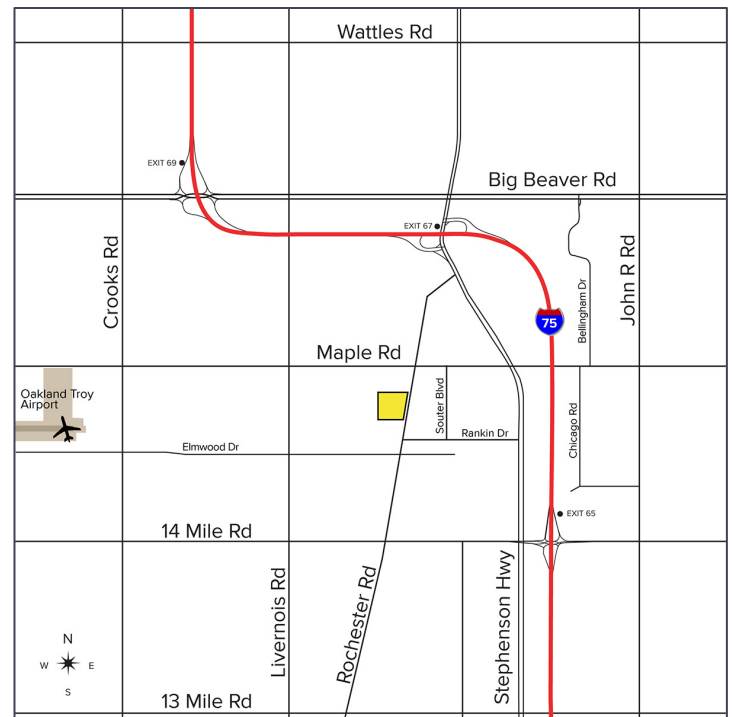
**SIGNATURE  
ASSOCIATES**  
KNOW SIGNATURE | KNOW RESULTS

**TROY TECH COMMONS**



## PROPERTY FEATURES

- 1,250 square feet unit available
- 16' clear height
- (1) 12x12 grade level door per unit
- 200 amps, 240 volts power
- Buildings are being completely renovated in 2023 with upgraded fixtures and landscaping
- Ample, shared parking
- Great small units in the heart of Troy
- Located on 4.186 acres
- Additional 1 acre lot, all or part, available for lease for outside storage or trailer parking
- Lease Rate: \$13.95/sq. ft. Gross



For more information, please contact:

**KRIS PAWLOWSKI**  
(248) 359 3801  
kpawlowski@signatureassociates.com

**PAUL HOGE**  
(248) 948 0103  
paulhoge@signatureassociates.com

**SIGNATURE ASSOCIATES**  
One Towne Square, Suite 1200  
Southfield, MI 48076  
www.signatureassociates.com

# 1195-1197 Rochester Road – Troy, Michigan

## Industrial For Lease

1,250  
Square Feet  
AVAILABLE

### Site Plan

#### AVAILABILITY

SUITE	TOTAL SF & OFFICE SF	GLD/DOCKS	RATE	AVAILABLE
1197 - E	1,250/Up to 200	1/0	\$13.95 G	Immediately



For more information, please contact:

**KRIS PAWLOWSKI**  
(248) 359 3801  
kpawlowski@signatureassociates.com

**PAUL HOGE**  
(248) 948 0103  
paulhoge@signatureassociates.com

**SIGNATURE ASSOCIATES**  
One Towne Square, Suite 1200  
Southfield, MI 48076  
www.signatureassociates.com

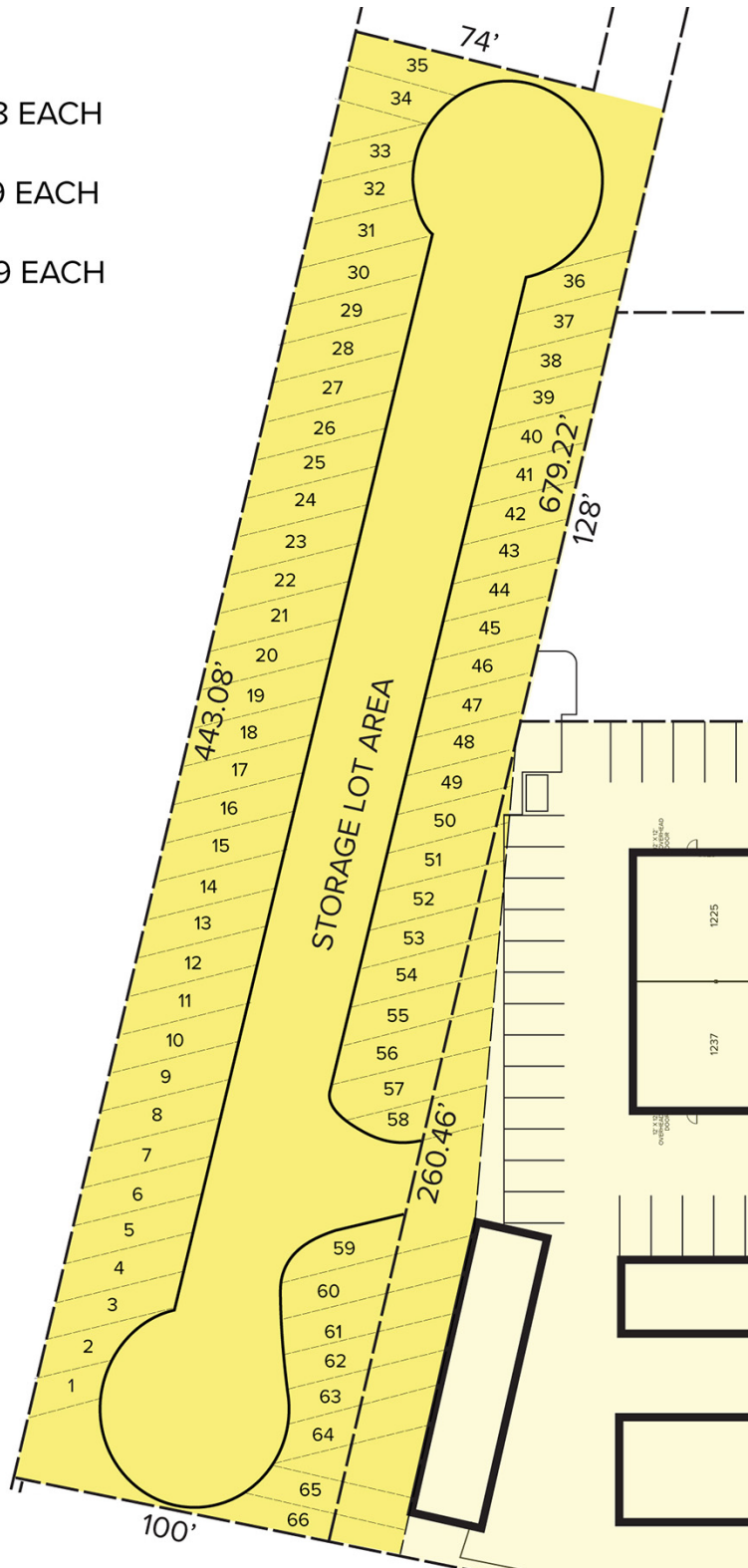
# 1195-1197 Rochester Road – Troy, Michigan

## Industrial For Lease

1,250  
Square Feet  
AVAILABLE

### Parking Plan

- 1 12' x 24' FOR \$98 EACH
- 3 11' x 20' FOR \$79 EACH
- 10 +/- 11' x 38' FOR \$139 EACH



For more information, please contact:

**KRIS PAWLOWSKI**  
(248) 359 3801  
kpawlowski@signatureassociates.com

**PAUL HOGE**  
(248) 948 0103  
paulhoge@signatureassociates.com

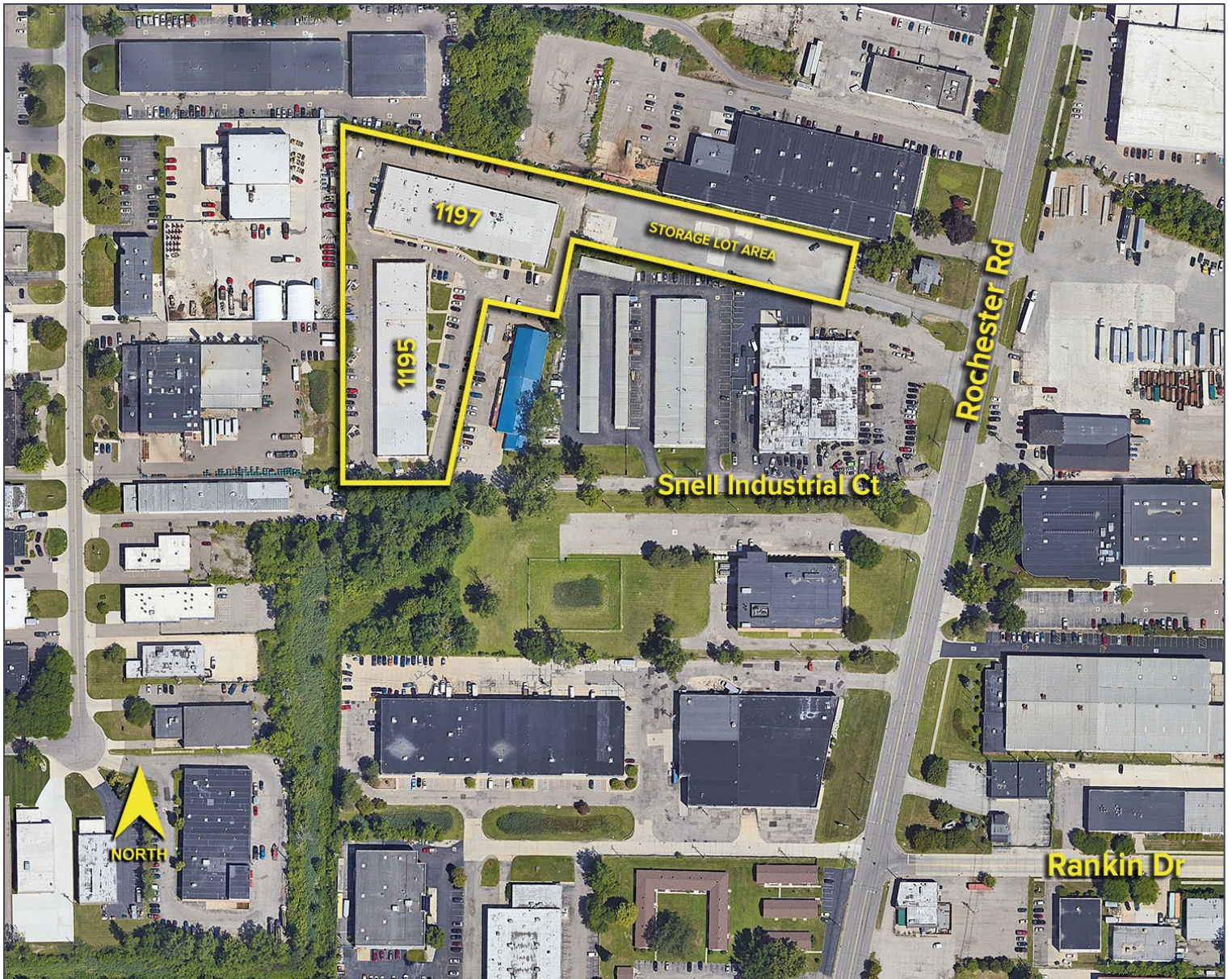
**SIGNATURE ASSOCIATES**  
One Towne Square, Suite 1200  
Southfield, MI 48076  
www.signatureassociates.com

# 1195-1197 Rochester Road – Troy, Michigan

Industrial For Lease

1,250  
Square Feet  
AVAILABLE

Aerial



For more information, please contact:

**KRIS PAWLOWSKI**  
(248) 359 3801  
kpawlowski@signatureassociates.com

**PAUL HOGE**  
(248) 948 0103  
paulhoge@signatureassociates.com

**SIGNATURE ASSOCIATES**  
One Towne Square, Suite 1200  
Southfield, MI 48076  
www.signatureassociates.com