

Industrial Warehouse for Sale

savills

525 Mill Street Columbia, PA 17512



Michael Styer

mstyer@savills.us

T: +1 267 256 7577

M: +1 484 885 3458

Jonathan Kays

jkays@savills.us

T: +1 267 256 7573

M: +1 484 343 8175

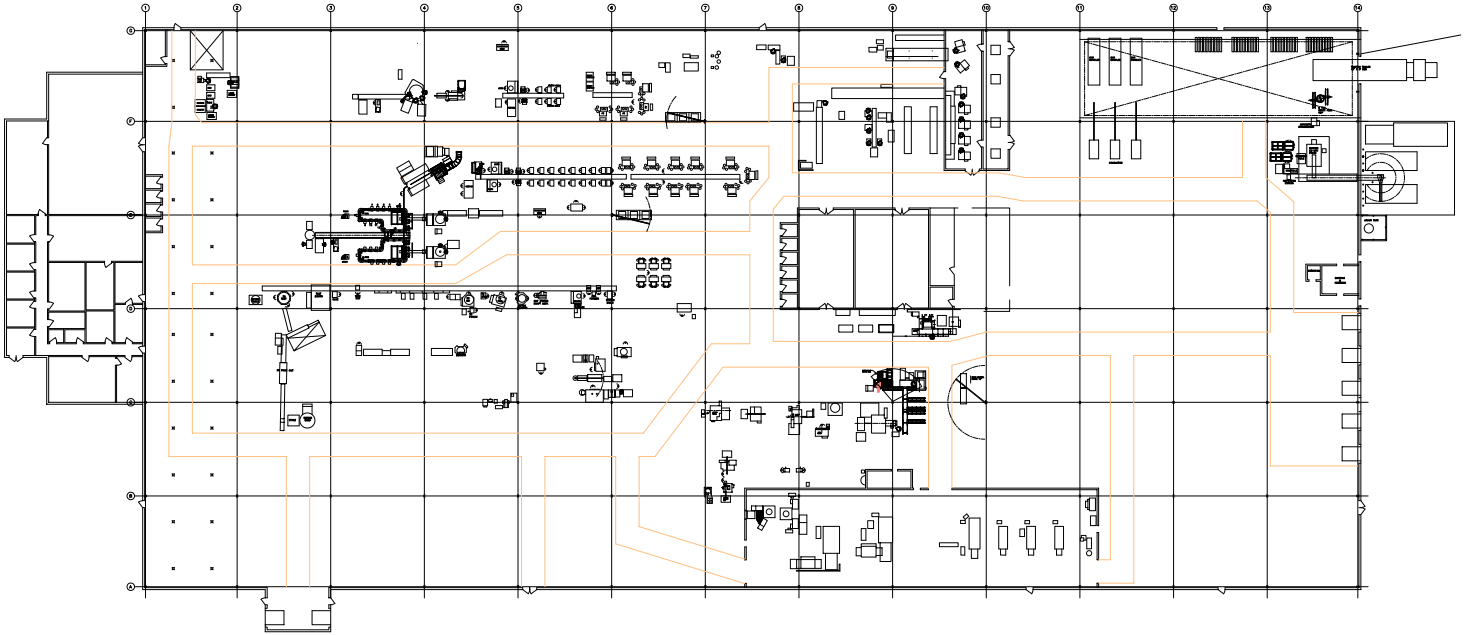
Jay Joyce

jjoyce@savills.us

T: +1 267 256 7565

M: +1 609 313 3039

Floor Plan



±132,736

SQUARE FEET

7

DOCK DOORS

10.81

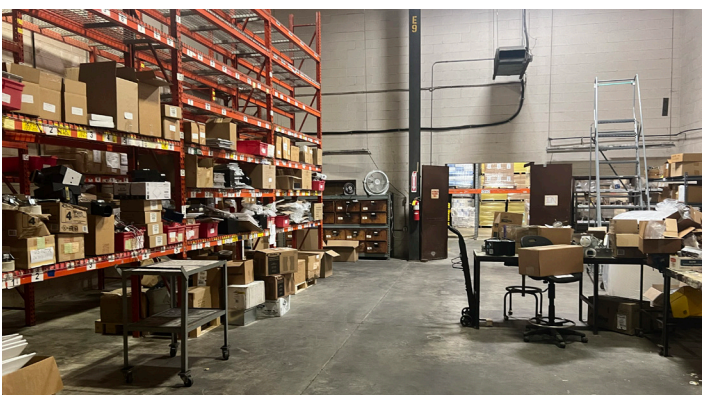
SITE ACREAGE

Property Specifications

Building Size:	±132,736 SF	Warehouse Space:	124,800 SF
Site Acreage:	10.81 AC / 470,884 SF	Office:	7,650 SF
Year Built:	1987	Power Capacity:	2,000a/480v 3p
Clear Height:	17' - 20'	Parking:	Ample
Dock Doors:	7	IOS:	Rear lot with capacity for Trailers / Storage
Drive-In Doors:	1	County:	Lancaster
Column Spacing:	40' x 40'	Municipality:	Columbia Borough
Floor Thickness:	5"	Zoning:	Light Industrial

© 2026 Savills. All rights reserved. The information contained in this communication has been obtained from a variety of sources believed to be reliable but has not been verified. NO WARRANTY OR REPRESENTATION, EXPRESS OR IMPLIED, IS MADE AS TO THE CONDITION OF THE PROPERTY OR ACCURACY OR COMPLETENESS OF THE INFORMATION CONTAINED HEREIN AND SAME IS SUBMITTED SUBJECT TO ERRORS, OMISSIONS, CHANGE OF PRICE, RENTAL OR OTHER CONDITIONS, WITHDRAWAL WITHOUT NOTICE AND TO ANY SPECIFIC CONDITIONS IMPOSED BY THE PROPERTY OWNER OR LESSOR.

Photos



© 2026 Savills. All rights reserved. The information contained in this communication has been obtained from a variety of sources believed to be reliable but has not been verified. NO WARRANTY OR REPRESENTATION, EXPRESS OR IMPLIED, IS MADE AS TO THE CONDITION OF THE PROPERTY OR ACCURACY OR COMPLETENESS OF THE INFORMATION CONTAINED HEREIN AND SAME IS SUBMITTED SUBJECT TO ERRORS, OMISSIONS, CHANGE OF PRICE, RENTAL OR OTHER CONDITIONS, WITHDRAWAL WITHOUT NOTICE AND TO ANY SPECIFIC CONDITIONS IMPOSED BY THE PROPERTY OWNER OR LESSOR.

Photos



© 2026 Savills. All rights reserved. The information contained in this communication has been obtained from a variety of sources believed to be reliable but has not been verified. NO WARRANTY OR REPRESENTATION, EXPRESS OR IMPLIED, IS MADE AS TO THE CONDITION OF THE PROPERTY OR ACCURACY OR COMPLETENESS OF THE INFORMATION CONTAINED HEREIN AND SAME IS SUBMITTED SUBJECT TO ERRORS, OMISSIONS, CHANGE OF PRICE, RENTAL OR OTHER CONDITIONS, WITHDRAWAL WITHOUT NOTICE AND TO ANY SPECIFIC CONDITIONS IMPOSED BY THE PROPERTY OWNER OR LESSOR.

Property Description:

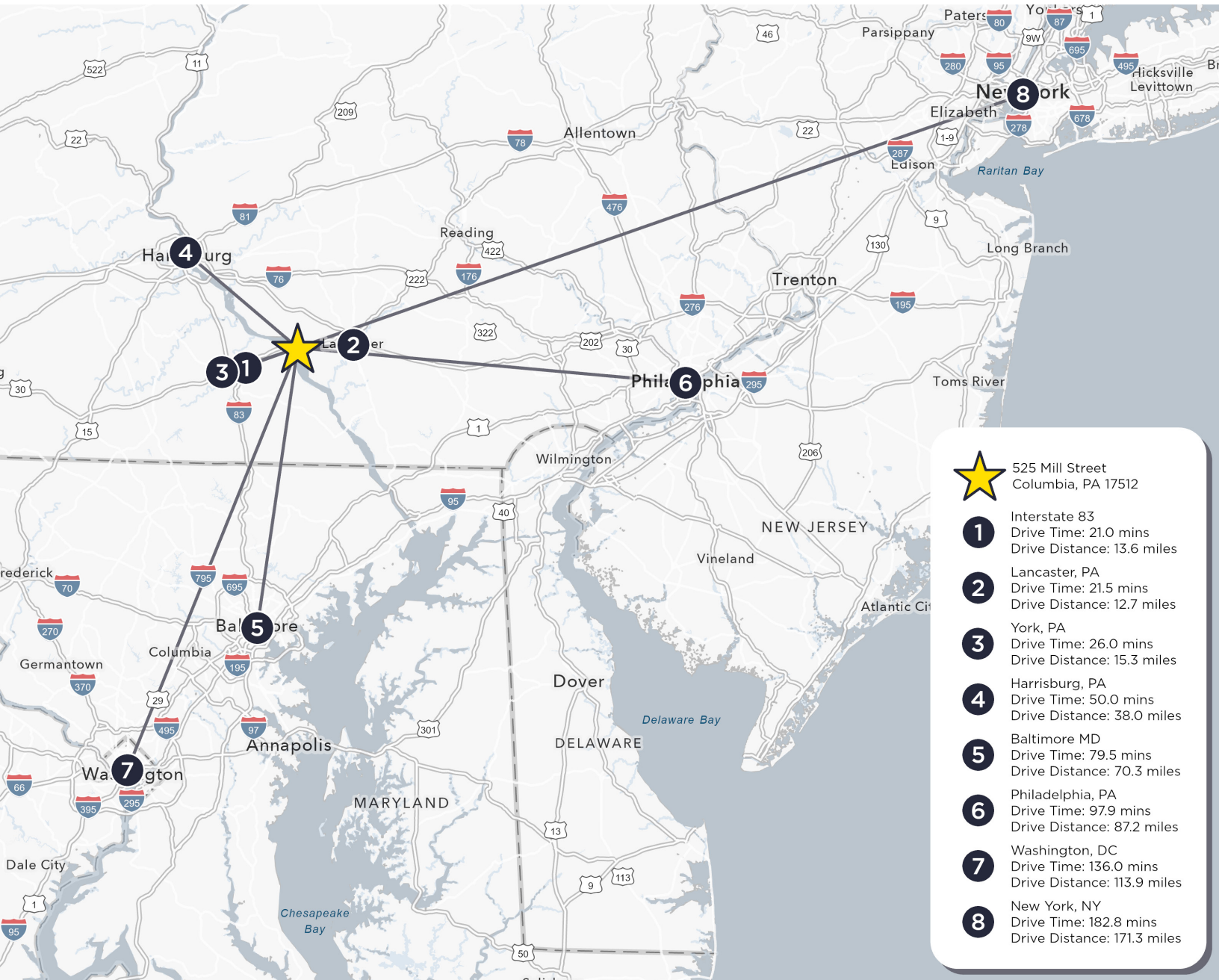
Industrial Warehouse with **10.81 acres** of land for sale in Columbia, Pennsylvania. The property is zoned Light Industrial. Proximity to Route 30 with quick access to Lancaster & York Industrial Labor markets. Secured site with existing fencing around the perimeter.

 1.5 miles



© 2026 Savills. All rights reserved. The information contained in this communication has been obtained from a variety of sources believed to be reliable but has not been verified. NO WARRANTY OR REPRESENTATION, EXPRESS OR IMPLIED, IS MADE AS TO THE CONDITION OF THE PROPERTY OR ACCURACY OR COMPLETENESS OF THE INFORMATION CONTAINED HEREIN AND SAME IS SUBMITTED SUBJECT TO ERRORS, OMISSIONS, CHANGE OF PRICE, RENTAL OR OTHER CONDITIONS, WITHDRAWAL WITHOUT NOTICE AND TO ANY SPECIFIC CONDITIONS IMPOSED BY THE PROPERTY OWNER OR LESSOR.

Location Overview



Michael Styer
 mstyer@savills.us
 T: +1 267 256 7577
 M: +1 484 885 3458

Jonathan Kays
 jkays@savills.us
 T: +1 267 256 7573
 M: +1 484 343 8175

Jay Joyce
 jjoyce@savills.us
 T: +1 267 256 7565
 M: +1 609 313 3039

© 2026 Savills. All rights reserved. The information contained in this communication has been obtained from a variety of sources believed to be reliable but has not been verified. NO WARRANTY OR REPRESENTATION, EXPRESS OR IMPLIED, IS MADE AS TO THE CONDITION OF THE PROPERTY OR ACCURACY OR COMPLETENESS OF THE INFORMATION CONTAINED HEREIN AND SAME IS SUBMITTED SUBJECT TO ERRORS, OMISSIONS, CHANGE OF PRICE, RENTAL OR OTHER CONDITIONS, WITHDRAWAL WITHOUT NOTICE AND TO ANY SPECIFIC CONDITIONS IMPOSED BY THE PROPERTY OWNER OR LESSOR.