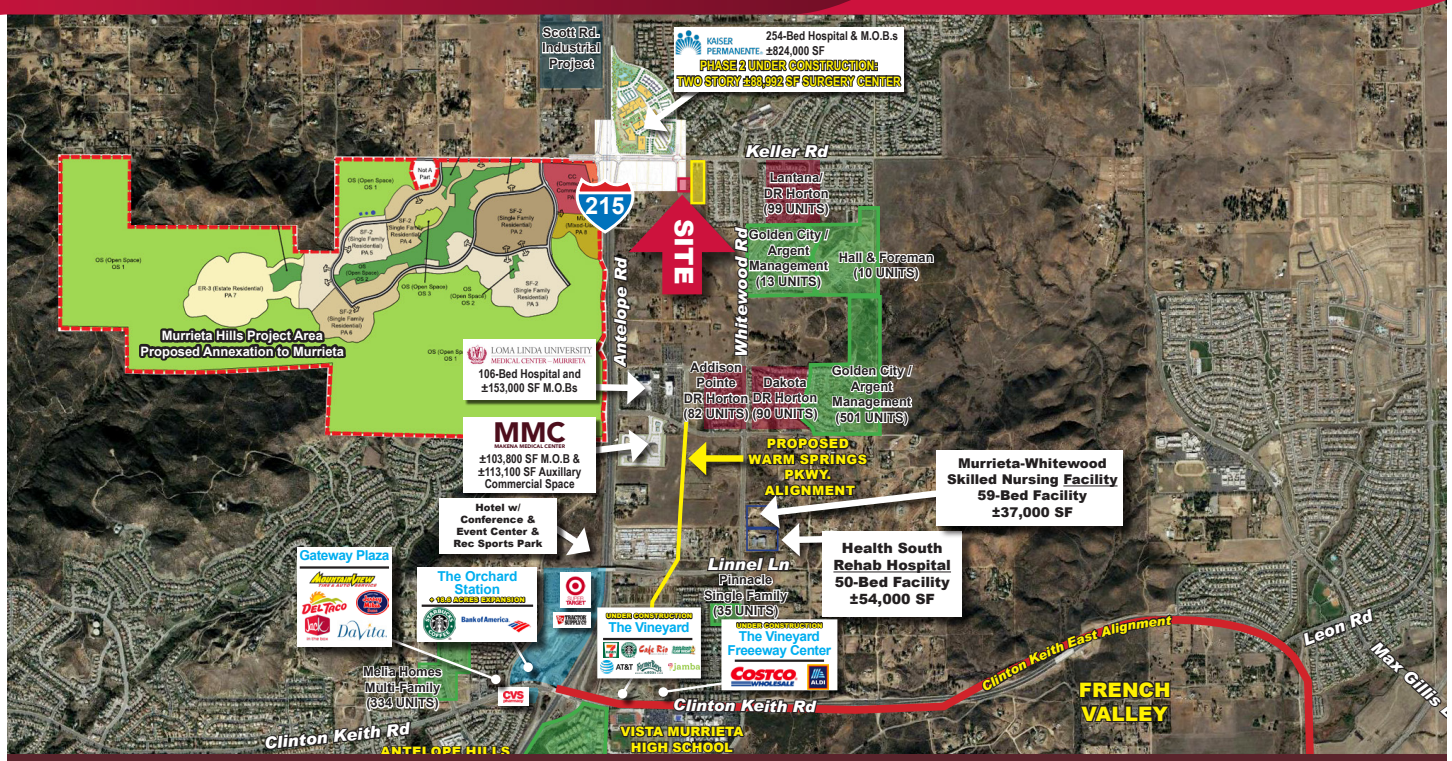


# FOR SALE

±1.82 ACRES COMMERCIAL LAND  
34072 WARNER PLACE | MURRIETA, CA



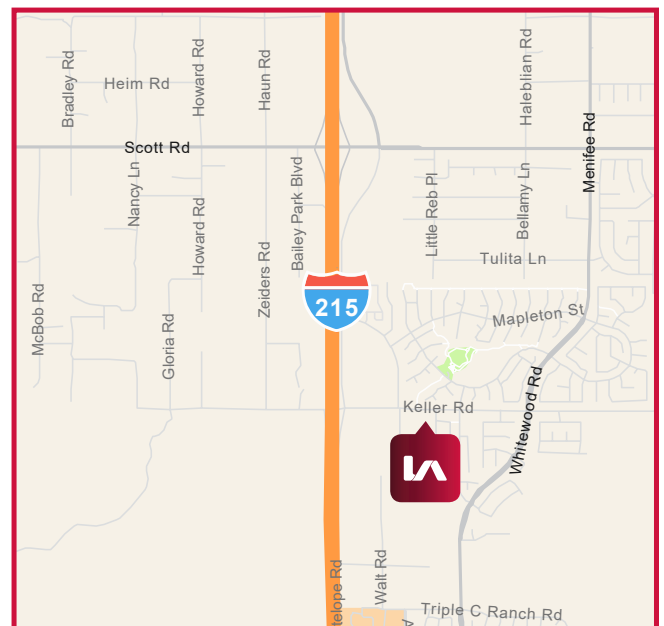
## PROPERTY HIGHLIGHTS:

- ±1.82 Acres Available for Purchase
- APN: 384-220-009
- Adjacent ±6.31 Acres also Available for Purchase (APN: 384-220-011)
- Across the street from the New Kaiser Hospital
- Future Off-ramp at Keller Road
- Utilities in Keller Road (Buyer to Validate)
- Zoning: ORP - Office Research Park ([click here to learn more](#))
- New Mapleton Road planned at Signalized Intersection

## CONTACT AGENT FOR PRICING

**Gordon Mize**  
951.445.4504  
gmize@leetemecula.com  
DRE #01275376

**Michael W. Strode, MBA, CCIM, SIOR**  
951.445.4508  
mstrode@leetemecula.com  
DRE #00798900



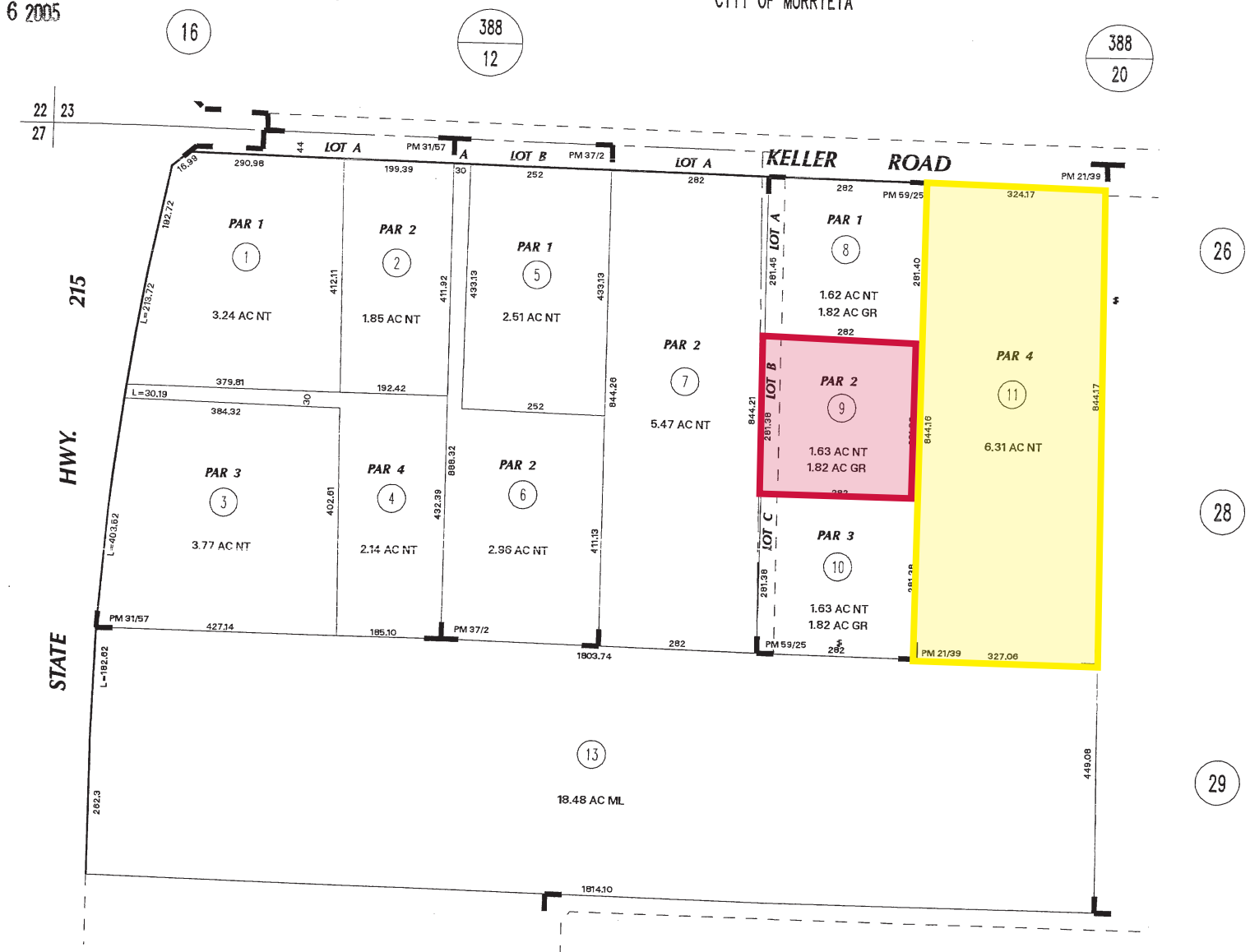
No warranty or representation has been made to the accuracy of the foregoing information. Terms of sale or lease and availability are subject to change or withdrawal without notice. Lee & Associates Commercial Real Estate Services, Inc. - Riverside. 25240 Hancock Avenue, Suite 100 - Murrieta, CA 92562 Corporate ID# 01048055

# FOR SALE

±1.82 ACRES COMMERCIAL LAND  
34072 WARNER PLACE | MURRIETA, CA

MAP PREPARED FOR ASSESSMENT PURPOSES ONLY. NO LIABILITY FOR THE ACCURACY OF THE DATA SHOWN. ASSESSOR'S PARCEL MAPS MAY VARY FROM LOCAL LOT-SPLIT OR BUILDING SITE ORDINANCES.

POR. NW 26 T. 6S., R. 3W  
CITY OF MURRIETA



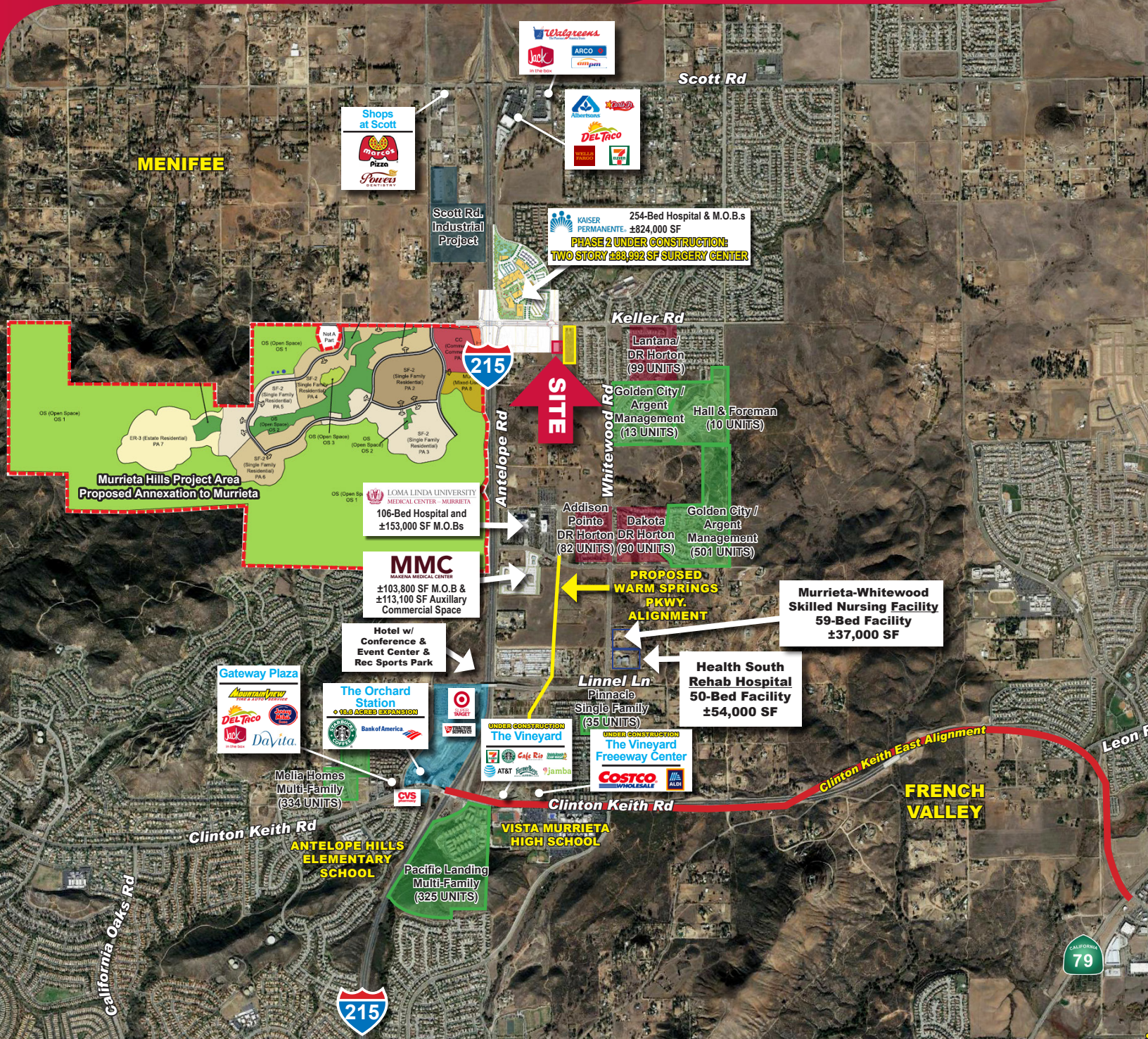
**Gordon Mize**  
951.445.4504  
gmize@leetemecula.com  
DRE #01275376

**Michael W. Strode, MBA, CCIM, SIOR**  
951.445.4508  
mstrode@leetemecula.com  
DRE #00798900

No warranty or representation has been made to the accuracy of the foregoing information. Terms of sale or lease and availability are subject to change or withdrawal without notice. Lee & Associates Commercial Real Estate Services, Inc. - Riverside. 25240 Hancock Avenue, Suite 100 - Murrieta, CA 92562 Corporate ID# 01048055

# FOR SALE

±1.82 ACRES COMMERCIAL LAND  
34072 WARNER PLACE | MURRIETA, CA



**Gordon Mize**  
951.445.4504  
gmize@leetemecula.com  
DRE #01275376

**Michael W. Strode, MBA, CCIM, SIOR**  
951.445.4508  
mstrode@leetemecula.com  
DRE #00798900

No warranty or representation has been made to the accuracy of the foregoing information. Terms of sale or lease and availability are subject to change or withdrawal without notice. Lee & Associates Commercial Real Estate Services, Inc. - Riverside. 25240 Hancock Avenue, Suite 100 - Murrieta, CA 92562 Corporate ID# 01048055