



223 Upper Richmond Road

London, SW15 6SQ

Commercial unit with a prominent frontage onto Upper Richmond Road. The property comprises ground floor, basement and 3 parking spaces.

1,020 sq ft
(94.76 sq m)

- Off-street Parking
- Prominent frontage
- Arterial route
- Close to Putney High Street
- Potential freehold investment (with residential) sale
- Would suit range of occupiers

223 Upper Richmond Road, London, SW15 6SQ

Summary

Available Size	1,020 sq ft
Rent	£40,000 per annum
Price	Price on application
Rates Payable	£5,364.25 per annum Potentially Zero rated. Applicant to seek their own advice.
Rateable Value	£10,750
Service Charge	N/A
Car Parking	N/A
VAT	To be confirmed
Legal Fees	Each party to bear their own costs
EPC Rating	E (119)

Description

Commercial unit (Class E) with a prominent frontage onto Upper Richmond Road. The property comprises a Class E commercial unit with ground floor showroom and basement storage. The premises also benefit from 3 parking spaces at the front.

Location

The property is located in Putney on Upper Richmond Road (A205 - South Circular - major bus route). The unit is 300 m (a 5 minute walk) from Putney Station and Putney High Street. Nearby occupiers include Sainsbury's, Pets at Home and Anytime Fitness.

Accommodation

The accommodation comprises the following areas:

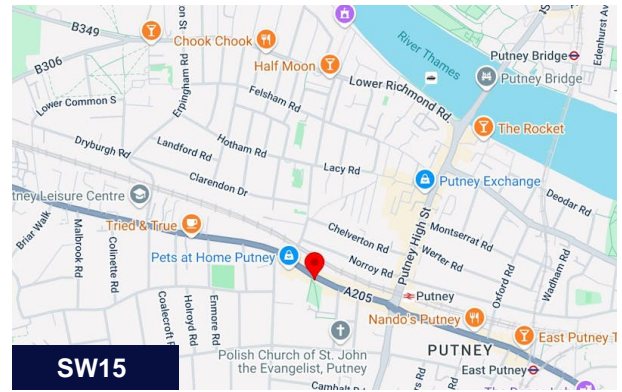
Name	sq ft	sq m	Availability
Ground - Showroom and office	709	65.87	Available
Basement - Storage	311	28.89	Available
Total	1,020	94.76	

Viewings

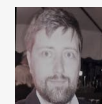
Viewing strictly by prior appointment with the sole agent.

Terms

Available by way of a new lease or by way of a freehold/long leasehold purchase. Potential to buy entire property with residential as an investment. Further details available by request.



Viewing & Further Information



Richard Farndale

020 8940 2266 | 077 8936 5304
r.farndale@martincampbell.co.uk



David Keates

020 8940 2266 | 07879 965 525
D.Keates@martincampbell.co.uk